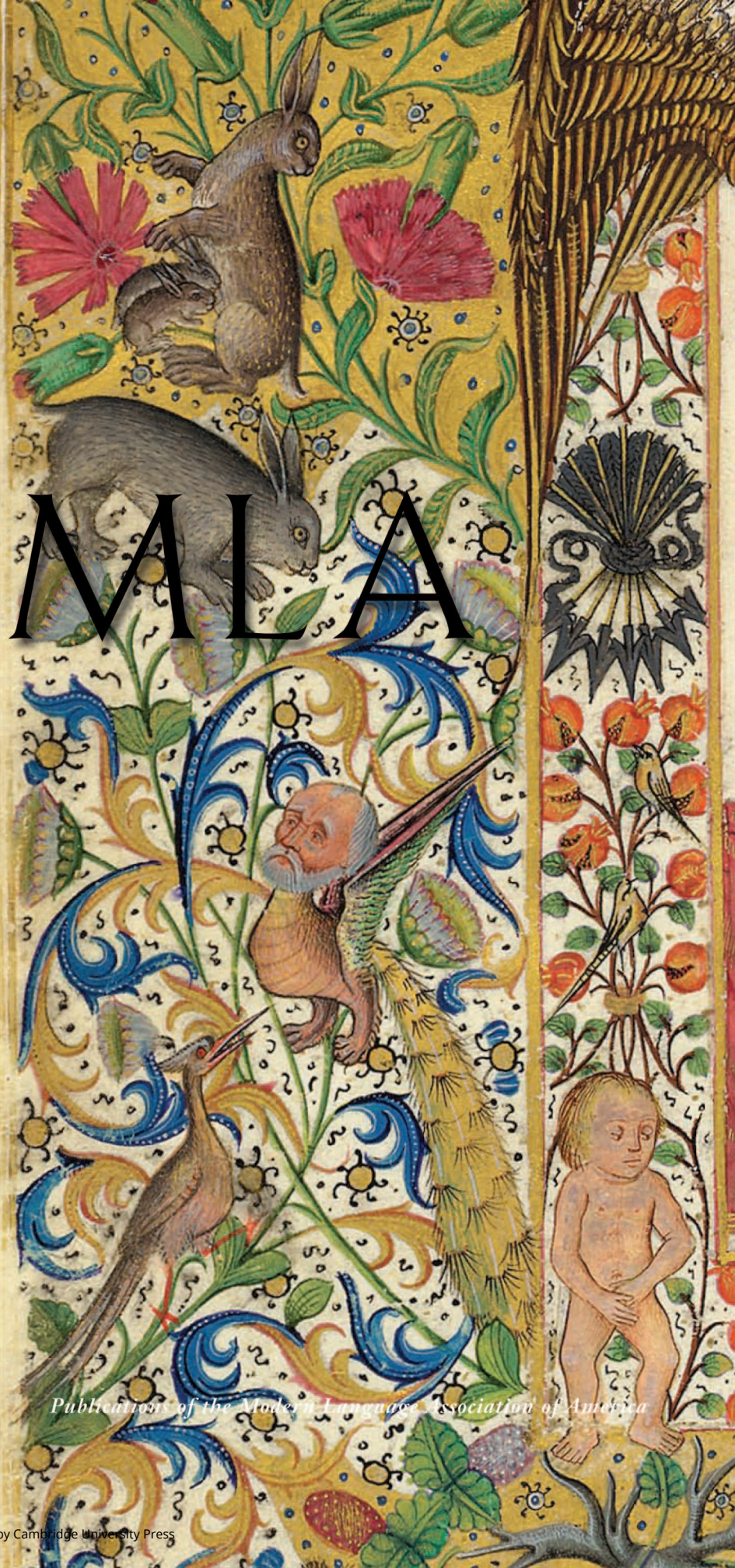


March 2009  
Volume 124 Number 2

# PMLA

*Publications of the Modern Language Association of America*



March 2009  
Volume 124 Number 2

# PMLA

---

*Publications of the Modern Language Association of America*

Published six times a year by the association

THE MODERN LANGUAGE  
ASSOCIATION OF AMERICA

[ Organized 1883, Incorporated 1900 ]

*Officers for the Year 2009*

President: CATHERINE PORTER  
*State University of New York College at Cortland*  
First Vice President: SIDONIE SMITH  
*University of Michigan, Ann Arbor*  
Second Vice President: RUSSELL A. BERMAN  
*Stanford University*  
Executive Director: ROSEMARY G. FEAL

*Executive Council*

FOR THE TERM ENDING 31 DECEMBER 2009

CHARLES ALTIERI  
*University of California, Berkeley*  
DORIAN F. BELL  
*University of California, Irvine*  
ANNE RUGGLES GERE  
*University of Michigan, Ann Arbor*  
PAULA RABINOWITZ  
*University of Minnesota, Twin Cities*

FOR THE TERM ENDING 9 JANUARY 2011

CARLOS J. ALONSO  
*Columbia University*  
JANE HARPER  
*Tarrant County College, Northeast Campus, TX*  
FRANCIS ABIOLA IRELE  
*Harvard University*

FOR THE TERM ENDING 8 JANUARY 2012

SARA SCOTT ARMENGOT  
*Rochester Institute of Technology*  
GEORGE LEVINE  
*Rutgers University, New Brunswick*  
LYNNE TATLOCK  
*Washington University*  
ALEXANDRA K. WETTLAUFER  
*University of Texas, Austin*

FOR THE TERM ENDING 6 JANUARY 2013

JENNIFER CREWE  
*Columbia University Press*  
KARIN C. RYDING  
*Georgetown University*  
KATHLEEN WOODWARD  
*University of Washington, Seattle*

*Trustees of Invested Funds*

HERBERT LINDENBERGER  
*Stanford, California*  
MALCOLM B. SMITH (Managing Trustee)  
*New York, New York*  
CATHARINE R. STIMPSON  
*New York, New York*

PMLA (ISSN 0030-8129) is published six times a year, in January, March, May, September, October, and November, by the Modern Language Association of America. Membership in the association is open to persons who are professionally interested in the modern languages and literatures. Annual (calendar-year) dues, which include subscription to PMLA, are based on members' incomes and are graduated as follows: student members (seven years maximum), \$20; new regular members (first year), \$35; regular members (income under \$15,000), \$25; regular members (income \$15,000–\$20,000), \$40; regular members (income \$20,000–\$30,000), \$50; regular members (income \$30,000–\$40,000), \$65; regular members (income \$40,000–\$50,000), \$75; regular members (income \$50,000–\$60,000), \$85; regular members (income \$60,000–\$70,000), \$95; regular members (income \$70,000–\$80,000), \$105; regular members (income \$80,000–\$100,000), \$125; regular members (income \$100,000–\$120,000), \$145; regular members (income \$120,000–\$140,000), \$165; regular members (income over \$140,000), \$175; joint members (two individuals sharing the same household, who receive one subscription to PMLA but two copies of all other publications), add \$20 to dues category of higher-income member; foreign members, same as regular members (use the American-dollar equivalent to ascertain the dues category). Membership applications are available on request and at the MLA Web site (<http://www.mla.org/>).

For libraries and other institutions, an electronic and print subscription for 2009 is \$180, and it includes the electronic and print editions of *Profession*, the MLA's annual journal of opinion about the modern language profession. An institutional subscription including a bound volume at the end of the year is \$350, domestic and foreign. Agents deduct four percent as their fee. Claims for undelivered issues will be honored if they are received within six months of the publication date; thereafter the single-issue price will be charged. To order an institutional subscription, call or write the Member and Customer Services Office of the association (646 576-5166; [subscrip@mla.org](mailto:subscrip@mla.org)).

Single copies of the January, March, May, and October issues can be purchased for \$12 each; the September (Directory) issue is \$50; the November (Program) issue is \$35. Issues for the current year are available from the Member and Customer Services Office of the association (646 576-5161; [bookorders@mla.org](mailto:bookorders@mla.org)).

An online archive of PMLA issues from 1884 to 2003 is available through JSTOR (<http://www.jstor.org/>). Volumes up to 2000 can be obtained on microfilm from National Archive Publishing Company, 300 North Zeeb Road, PO Box 998, Ann Arbor, MI 48106-0998 (800 420-6272; <http://www.napubco.com/umi.html>).

The office of publication and editorial offices are located at 26 Broadway, 3rd floor, New York, NY 10004-1789 (646 576-5000; [pmlasubmissions@mla.org](mailto:pmlasubmissions@mla.org)).

All communications concerning membership, including change-of-address notifications, should be sent to the Member and Customer Services Office, MLA, 26 Broadway, 3rd floor, New York, NY 10004-1789 (646 576-5151; [membership@mla.org](mailto:membership@mla.org)). If a change of address also involves a change of institutional affiliation or a new e-mail address, that office should be informed of this fact at the same time.

Periodicals postage paid at New York, NY, and at additional mailing offices.

© 2009 by The Modern Language Association of America. All rights reserved. Printed in the United States of America.

MLA and the MODERN LANGUAGE ASSOCIATION are trademarks owned by the Modern Language Association of America.

Library of Congress Catalog Card Number 12-32040. United States Postal Service Number 449-660. POSTMASTER: Send address changes to PMLA, Member and Customer Services Office, MLA, 26 Broadway, 3rd floor, New York, NY 10004-1789.

# Contents

MARCH 2009

- 358 A Statement of Editorial Policy • Forthcoming in *PMLA*  
359 Features in *PMLA*
- 361 **Guest Column: Why Animals Now?**  
MARIANNE DeKOVEN
- 
- Victorian Cluster*
- 370 Introduction: “Modern” Love and the Proto-Post-Victorian  
CAROLYN DEVER
- 375 **Griffith, Dickens, and the Politics of Composure**  
DANIEL SIEGEL
- 390 **Intertextual Estella: *Great Expectations*, Gender, and Literary Tradition**  
SARAH GATES
- 406 **Dickens and the Wolf Man: Childhood Memory and Fantasy in *David Copperfield***  
ROBERT E. LOUGY
- 421 **Rich Woman, Poor Woman: Toward an Anthropology of the Nineteenth-Century Marriage Plot**  
ELSIE B. MICHIE
- 437 **Trollopian “Foreign Policy”: Rootedness and Cosmopolitanism in the Mid-Victorian Global Imaginary**  
LAUREN M. E. GOODLAD
- 455 **Math for Math’s Sake: Non-Euclidean Geometry, Aestheticism, and *Flatland***  
ANDREA HENDERSON
- 
- theories and methodologies**
- Animal Studies*
- 472 The Eight Animals in Shakespeare; or, Before the Human  
LAURIE SHANNON
- 480 Zoos, the Academy, and Captivity  
NIGEL ROTHFELS

PUBLICATIONS OF THE  
MODERN LANGUAGE ASSOCIATION  
OF AMERICA

[ Published six times a year ]

VOLUMES ONLINE

VOLS. 1–118 (1884–2003), *JSTOR*  
VOLS. 117–24 (2002–09), *MLAJournals.org*

ONLINE INDEX

VOLS. 1–124 (1884–2009)  
*MLA International Bibliography*

PRINT INDEXES

VOLS. 1–50, 1935; 51–60, 1945; 51–79, 1964

—

*Editor*

PATRICIA YAEGER

*University of Michigan, Ann Arbor*

*Managing Editor*

JUDY GOULDING

*Associate Managing Editor*

ERIC WIRTH

*Assistant Editors*

JOHN D. GOLBACH, VIVIAN KIRKLIN,

BARNEY LATIMER

*Advertising Manager and Submissions Associate*

ANNABEL SCHNEIDER

*Administrative Assistants*

ANGEL M. BUTTS, SARA HASSELBACH

*Editorial Board*

JANE K. BROWN, 2009

*University of Washington, Seattle*

SIMON E. GIKANDI, 2009

*Princeton University*

LAWRENCE D. KRITZMAN, 2010

*Dartmouth College*

ADAM POTKAY, 2010

*College of William and Mary*

RALPH E. RODRIGUEZ, 2010

*Brown University*

VICKY UNRUH, 2009

*University of Kansas*

*Advisory Committee*

BRIAN JAMES BAER, 2010

*Kent State University, Kent*

MICHAEL BEARD, 2009

*University of North Dakota*

DAVID F. BELL, 2009

*Duke University*

NINA BERMAN, 2010

*Ohio State University, Columbus*

DON H. BIALOSTOSKY, 2011

*University of Pittsburgh, Pittsburgh*

JOHN BISHOP, 2011

*University of California, Berkeley*

SARA BLAIR, 2009

*University of Michigan, Ann Arbor*

TOM CONLEY, 2010

*Harvard University*

RITA COPELAND, 2009

*University of Pennsylvania*

GAURAV DESAI, 2011

*Tulane University*

(continued)

*Advisory Committee (continued)*

- HELEN DEUTSCH, 2010  
*University of California, Los Angeles*  
 ROBERT RICHMOND ELLIS, 2011  
*Occidental College*  
 JOHN ERNEST, 2009  
*West Virginia University, Morgantown*  
 ANA PAULA FERREIRA, 2010  
*University of Minnesota, Twin Cities*  
 MARÍA ANTONIA GARCÉS, 2011  
*Cornell University*  
 ANÍBAL GONZÁLEZ-PÉREZ, 2011  
*Yale University*  
 MARSHALL GROSSMAN, 2011  
*University of Maryland, College Park*  
 SUSAN ELIZABETH GUSTAFSON, 2010  
*University of Rochester*  
 CHRISTOPHER C. HUDGINS, 2009  
*University of Nevada, Las Vegas*  
 BARBARA LADD, 2011  
*Emory University*  
 JOSEPH LITVAK, 2010  
*Tufts University*  
 LYDIA H. LIU, 2009  
*Columbia University*  
 CHRISTOPHER LOOBY, 2010  
*University of California, Los Angeles*  
 DAVID MARSHALL, 2009  
*University of California, Santa Barbara*  
 HARUKO MOMMA, 2010  
*New York University*  
 DANA D. NELSON, 2010  
*Vanderbilt University*  
 MARGARET NOORI, 2011  
*University of Michigan, Ann Arbor*  
 GABRIELA NOUZEILLES, 2011  
*Princeton University*  
 TEJUMOLA OLANIYAN, 2009  
*University of Wisconsin, Madison*  
 VALÉRIE ORLANDO, 2009  
*University of Maryland, College Park*  
 THOMAS PEPPER, 2010  
*University of Minnesota, Twin Cities*  
 ARKADY PLOTNITSKY, 2009  
*Purdue University, West Lafayette*  
 KRISTA RATCLIFFE, 2011  
*Marquette University*  
 JOHN PAUL RIQUELME, 2011  
*Boston University*  
 KENNETH M. ROEMER, 2010  
*University of Texas, Arlington*  
 DAVID ROMÁN, 2010  
*University of Southern California*  
 SYLVIE ROMANOWSKI, 2011  
*Northwestern University*  
 MARGARET ROSENTHAL, 2010  
*University of Southern California*  
 LAWRENCE R. SCHEHR, 2011  
*University of Illinois, Urbana*  
 LISA M. STEINMAN, 2009  
*Reed College*  
 GORDON TESKEY, 2011  
*Harvard University*  
 VALERIE TRAUB, 2009  
*University of Michigan, Ann Arbor*  
 DEBORAH ELISE WHITE, 2009  
*Emory University*  
 JENNIFER WICKE, 2009  
*University of Virginia*

MARCH 2009

- 487 Literary Animal Agents  
 SUSAN McHUGH
- 496 From Animal to Animality Studies  
 MICHAEL LUNDBLAD
- 503 The Android and the Animal  
 URSULA K. HEISE
- 511 *Understudies: Miming the Human*  
 SUSAN M. GRIFFIN
- 520 “Of All Nonsensical Things”: Performance and Animal Life  
 UNA CHAUDHURI
- 526 Animals, Anomalies, and Inorganic Others  
 ROSI BRAIDOTTI
- 533 Emily Dickinson’s Animal Pedagogies  
 COLLEEN GLENNEY BOGGS
- 542 Animal Studies and the Deconstruction of Character  
 BRUCE BOEHRER
- 548 Experimenting at the Threshold: Sacrifice, Anthropomorphism, and the Aims of (Critical) Animal Studies  
 KIMBERLY W. BENSTON
- 556 Postcolonial Critique in a Multispecies World  
 NEEL AHUJA
- the changing profession**
- 564 Human, All Too Human: “Animal Studies” and the Humanities  
 CARY WOLFE
- theories and methodologies**
- Medieval Studies in the Twenty-First Century*
- 576 Romance Captivities in the Context of Crusade: *The Prose Lancelot*  
 PEGGY McCRACKEN
- 583 Beyond Mimesis: Aristotle’s *Poetics* in the Medieval Mediterranean  
 KARLA MALLETT
- 592 Provincializing Medieval Europe: Mandeville’s Cosmopolitan Utopia  
 KARMA LOCHRIE
- 600 Medieval Mediterranean Literature  
 SHARON KINOSHITA
- 609 Who Stole Robertson?  
 STEVEN JUSTICE
- 616 Of Pigs and Parchment: Medieval Studies and the Coming of the Animal  
 BRUCE HOLSINGER

- 624 Arabic in the Medieval World  
CHRISTINE CHISM
- 632 The Prehistory of the Book  
JESSICA BRANTLEY
- 640 Melancholy, Passionate Love, and the *Coita d'Amor*  
JOSIAH BLACKMORE

### criticism in translation

- 647 On the Nature of the *Bildungsroman*  
KARL MORGENSTERN  
INTRODUCTION AND TRANSLATION BY TOBIAS BOES
- 660 Forum  
JOHN CHAMPAGNE, TANYA ERZEN, AND ROGER B. ROLLIN
- 664 In Memoriam
- 666 Index of Advertisers
- 670 Index of Authors Advertised
- 711 Abstracts



Cover: Detail of the ex libris of Ferdinand II of Aragon and Isabella I for Gaston Phoebus's *Le livre de la chasse* (c. 1407). The Pierpont Morgan Library, New York. Bequest of Clara S. Peck, 1983. MS M.1044 (fol. 1v). Photograph by the Pierpont Morgan Library, New York. The library writes:

*Hunting was an important part of medieval life; kings and noblemen were expected to excel and take pleasure in the pursuit. Some famous hunters wrote books on the subject, whereas others collected and commissioned them. Three of the most popular French treatises were written during the fourteenth century, but others were also written in Spanish, English, and German.*

*Gaston III, Count of Foix (1331–1391), called Phoebus on account of his golden hair or handsome features, wrote his hunting book late in life (1387–89), sharing his knowledge in a field in which he claimed supremacy, unlike in his two other pleasures in life, arms and love. The work, dedicated to his fellow hunter and warrior Philip the Bold (1342–1404), Duke of Burgundy, comprises four books: On Gentle and Wild Beasts, On the Nature and Care of Dogs, On Instructions for Hunting with Dogs, and On Hunting with Traps, Snares, and Crossbow. . . .*

*The Morgan Phoebus, a book fit for a king, was given to Ferdinand and Isabella a few years before 1492, when they retook Granada and added the pomegranate (its symbol) to their coat of arms. As a sign of their ownership, they commissioned a Castilian artist connected with Juan de Carrion to add this splendid ex libris to the manuscript. The emblems in the inner border reflect the monarchs' conjugal bond, for each used the one belonging to the initial of the other: Ferdinand, the yoke (iugo, the I) and Isabella, the arrow (flecha, the F). The animals in the outer border offer a prelude to the manuscript, as they are quoted from its miniatures. ("Illuminating the Medieval Hunt"; Morgan Library and Museum; Morgan Lib. and Museum, n.d.; Web; 30 Apr. 2009)*