

FORUM

- 611 The Four Fields of Archaeology
Charles R. McGimsey III

ARTICLES

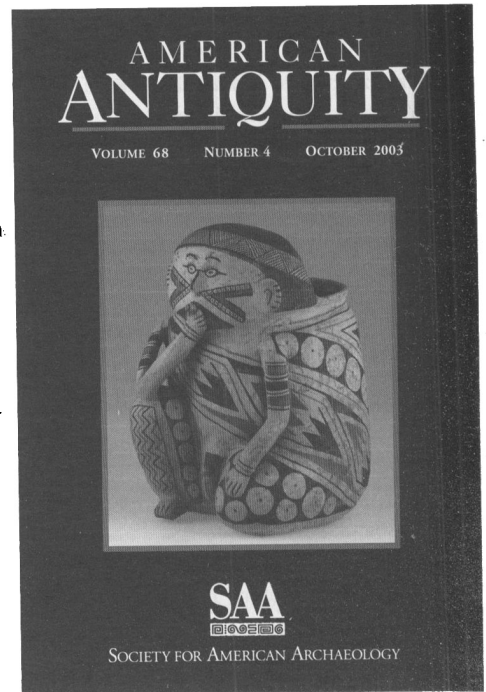
- 619 Phytolith Evidence for Early Maize (*Zea Mays*) in the Northern Finger Lakes Region of New York
John P. Hart, Robert G. Thompson, and Hetty Jo Brumbach
- 641 Consolidation and Hierarchy: Chiefdom Variability in the Mississippian Southeast
Robin A. Beck, Jr.
- 665 Exploring the Ubiquitous Through the Unusual: Color Symbolism in Pueblo Black-on-white Pottery
Stephen Plog
- 696 The Shaman-Priests of the Casas Grandes Region, Chihuahua, Mexico
Christine S. Van Pool

REPORTS

- 719 Calibrated Radiocarbon Dating at Keatley Creek: The Chronology of Occupation at a Complex Hunter-Gatherer Village
William C. Prentiss, Michael Lenert, Thomas A. Foor, Nathan B. Goodale, and Trinity Schlegel
- 737 The Death of Owasco
John P. Hart and Hetty Jo Brumbach
- 753 Documenting Prehistoric Communication Networks: A Case Study in the Paquimé Polity
Steve Swanson
- 768 Ceramic Standardization and Intensity of Production: Quantifying Degrees of Specialization
Valentine Roux

COMMENTS

- 783 Showing Off, Foraging Models, and the Ascendance of Large-Game Hunting in the California Middle Archaic
Jack M. Broughton and Frank E. Bayham
- 790 Large-Game Hunting, Gender-Differentiated Work Organization, and the Role of Evolutionary Ecology in California and Great Basin Prehistory: A Reply to Broughton and Bayham
William Hildebrandt and Kelly McGuire
- 793 **Index to Volume 68**
- 798 **Statement of Ownership**



NOTICE TO AUTHORS

Latin American Antiquity publishes original papers on the archaeology, prehistory, and ethnohistory of Latin America, i.e., Mesoamerica, Central America, and South America, together with culturally affiliated adjacent regions. Papers may also treat more general theoretical and methodological issues with relevance to Latin America. Authors submit manuscripts to the editor for consideration as ARTICLES or REPORTS in English, Spanish, or Portuguese. Authors should submit an original and three copies of their manuscripts (including all figures, tables, references, and notes), along with an abstract in both English and Spanish. Detailed information on policy, style, and technical matters of manuscript preparation is given in English in the "Editorial Policy, Information for Authors, and Style Guide for *American Antiquity* and *Latin American Antiquity*," which appeared in September 1992 (vol. 3, no. 3) and in Spanish in "Código editorial, información para autores y guía estilística para *American Antiquity* and *Latin American Antiquity*," which appeared in July 1997 (vol. 8, no. 2). This information is also available in English through the World Wide Web at <http://www.saa.org/Publications/StyleGuide/styframe.html>. For additional information, updates, or clarification, consult the managing editor at the SAA office in Washington, D.C.

BOARD OF DIRECTORS OF THE SOCIETY FOR AMERICAN ARCHAEOLOGY

Officers

President: LYNNE SEBASTIAN, SRI Foundation, 333 Rio Rancho Dr. NE, Suite 103, Rio Rancho, NM 87124

Secretary: DEAN SNOW, Department of Anthropology, Pennsylvania State University, 409 Carpenter Bldg., University Park, PA 16802

Treasurer: DONALD J. WEIR, CCRG Inc, 2530 Spring Arbor Rd., Jackson, MI 49203-3602

Treasurer-Elect: GEORGE H. ODELL, 600 S College Ave., Department of Anthropology, University of Tulsa, Tulsa, OK 74104-3126

Board Members-at-Large

LUIS ALBERTO BORRERO, CONICET, Tucuman 2146-Piso 7, Buenos Aires 1050, Argentina

JON CZAPLICKI, Bureau of Reclamation, PXAO-1500 Phoenix Area Office, PO Box 81169, Phoenix, AZ 85069-1169

PATRICIA A GILMAN, Department of Anthropology, University of Oklahoma, Norman, OK 73019-0001

MADONNA MOSS, Department of Anthropology, 1218 University of Oregon, Eugene, OR 97403-1205

NELLY ROBLES GARCIA, Pino Suarez 715, Oaxaca OAX 68000, Mexico

JOE WATKINS, PO Box 30992, Albuquerque, NM 87190-0992

Ex-Officio Board Member

TOBI A. BRIMSEK, Society for American Archaeology, 900 Second St NE, Suite 12

ARTICLES

- 371 Nohoch Ek Revisited: The Minor Center as Manor
Jennifer T. Taschek and Joseph W. Ball
- 389 Coexistencia de Cazadores Recolectores y Horticultores Tempranos en la Cordillera Andina de Chile Central
Luis E. Cornejo B. y Lorena Sanhueza R.
- 408 The Exemplary Center of the Late Postclassic Kowoj Maya
Timothy W. Pugh
- 431 Water, *Huacas*, and Ancestor Worship: Traces of a Sacred Wari Landscape
Mary Glowacki and Michael Malpass

REPORTS

- 449 Guardian of the Acropolis: The Sacred Space of a Royal Burial at Piedras Negras, Guatemala
James L. Fitzsimmons, Andrew Scherer, Stephen D. Houston, and Héctor L. Escobedo
- 469 The Organization of Staple Crop Production at K'axob, Belize
Hope Henderson

STUDENT REVIEWS

- 497 The Aztec Templo Mayor: A Visualization, by Antonio Serrato-Combe
Matthew D. Rockmore
- 498 Hinterland Households: Rural Agrarian Household Diversity in Northwest Honduras, by John G. Douglass
Amy Kovak
- 499 Salt: White Gold of the Ancient Maya. Heather Mckillop
Erick T. Rochette
- 500 El Héroe entre el Mito y la Historia, edited by Federico Navarrete and Guilhem Olivier
Blanca Maldonado
- 501 In the Realm of Nachan Kam: Postclassic Maya Archaeology at Laguna de On, Belize, by Marilyn A. Masson
Craig Goralski
- 502 Maya Palaces and Elite Residences: An Interdisciplinary Approach, edited by Jessica J. Christie
Christopher R. Andres
- 504 Archaeology at La Isabela: America's First European Town, by Kathleen Deagan and José María Cruxent; *and* Columbus's Outpost among the Taíno: Spain and America at La Isabela, 1493--1498, by Kathleen Deagan and José María Cruxent
James M. VanderVeen

508 **Statement of Ownership**

509 **Index to Volume 14**

On the Cover: General domestic assemblage pottery. Unslipped Cayo and black-slipped Mt. Maloney vessels (from "Nohoch Ek Revisited: The Minor Center as Manor," by Jennifer T. Taschek and Joseph W. Ball, page 377).

© The paper used in this publication meets the requirements of ANSI/NISO Z39.48-1992 (Permanence of Paper).