

## Annual ILWCH Meeting

*Gary M. Fink*

Georgia State University

Nick Salvatore convened the annual business meeting of the Study Group on International Labor and Working Class History (ILWCH) during the American Historical Association's San Francisco meeting, December 27-30. Approximately 20 persons were in attendance, a low turnout precipitated no doubt by the cocktail party sponsored by Radical Historians following the E.P. Thompson session earlier in the afternoon.

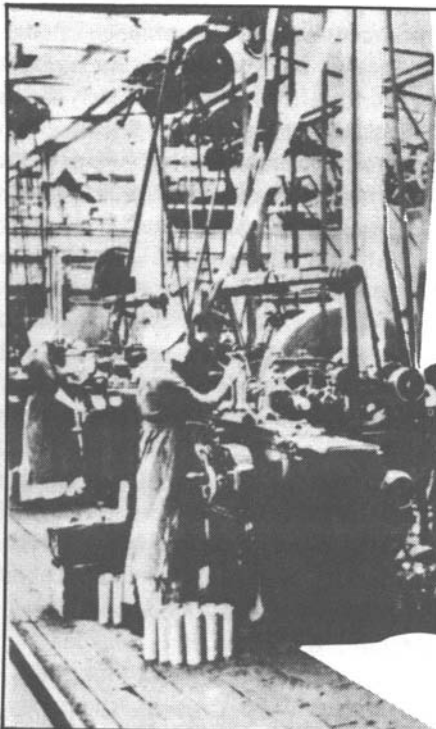
Salvatore called on Ileen DeVault, assistant editor of *International Labor and Working Class History*, to report on the status of the journal. She announced that issue Number 24, under the guest editorship of Helmut Gruber and Mike Hanagan, had proceeded successfully, and that a new feature, entitled "Scholarly Controversies," had been added to the journal's format. The first such controversy involves a critique of Jacques Rancière's, "The Myth of the Artisan." DeVault solicited suggestions for other such issues that might be carried in future editions.

Regarding the status of the journal, DeVault reported that the financial emergency David Montgomery discussed with ILWCH members at the 1982 meeting had been relieved, temporarily at least, through a substantial contribution from the Robert F. Wheeler Memorial Fund, donations from ILWCH members, sales of the subscription list, and the like. Moreover, institutional subscriptions, after declining for several years, have stabilized. As a result of the improved financial situation and several other matters, it was decided not to pursue the possible merger with the *Radical History Review* which had been discussed at the 1982 meeting. Meanwhile, Montgomery plans to convene a meeting of interested ILWCH members in New York early in 1984 to discuss a reorganization of the editorial board.

As one means of avoiding an anticipated deficit in 1984, DeVault moved that subscription rates be increased by approximately 20 percent for all subscriber classifications. The new rate structure was approved, raising the student rate from \$6 to \$7; employed members from \$10 to \$12; overseas \$15 to \$17; institutional \$15 to \$20, and overseas institutional \$20 to \$25. After the motion carried, DeVault stated that even at the new subscription rates, the journal was still a bargain, and

she urged all members present to encourage libraries in their areas to subscribe to the journal and to promote additional subscriptions among friends and colleagues.

Members present then discussed a broad range of issues regarding the wisdom of the AHA connection, the need to have ILWCH reviews listed in various review indices, and the reorganization of the program component at the annual meeting. There being no further business, the meeting was adjourned.



## Russian Factory Women

Workplace and Society,  
1880-1914

by **Rose L. Glickman**

In this study of women workers during the formative period of Russian industrial capitalism, Glickman examines the interaction of class and gender that shaped these women's lives amidst the great social and economic changes of the period.

\$22.50

Available at bookstores

**University of  
California Press**

Berkeley 94720