

The split of a fricative merger due to dialect contact and societal changes: A sociophonetic study on Andalusian Spanish read-speech

BRENDAN REGAN

Texas Tech University

ABSTRACT

In line with a growing body of literature suggesting that mergers are reversible given the adequate dialect contact and social context, the present study examines the phonetic split of the Andalusian Spanish merger of *ceceo* into the Castilian Spanish feature of *distinción*. Specifically, the study analyzes 19,420 coronal fricatives produced by 80 Western Andalusian speakers from the city of Huelva and the nearby town of Lepe using a reading passage and wordlist. The analyses find that leaders of this change are younger speakers, women, those with more educational attainment, those of service and professional occupations, and those from Huelva. The implications are that large-scale societal changes have allowed for the split of the *ceceo* merger into *distinción* in both speech communities, albeit at different rates of change due to their unique socioeconomic histories, demonstrating that a split is possible given the right social context.

The study of mergers and splits has been of great importance to historical linguistics, dialectology, and sociolinguistics. While phonetic mergers have been well studied, splits, which are the reversal of previously merged phones, remain a relatively underexplored topic. The possibility of the split of a merger is disputed in the literature under the conventions of Garde's Principle, which holds that once a merger has occurred, it will persist, and Herzog's Principle, which states that mergers expand at the expense of distinctions (Labov, 1994). However, a growing number of studies demonstrate that, with adequate dialect contact, a split may occur (Johnson, 2010; Maguire, 2008; Maguire, Clark, & Watson, 2013; Nycz, 2011, 2013; Trudgill, Schreier, Long, & Williams, 2003; Yao & Chang, 2016). Nevertheless, the variationist literature informing theories on mergers and splits is biased towards the phonology of English, specifically vowels (Gordon, 2013:204, 2015:174). Thus, the current study analyzes a consonant split in Andalusian Spanish.

In the last several decades, sociolinguists in Andalusia have been chronicling the ongoing split of the *ceceo* (and *seseo*) merger into *distinción*. *Distinción* is the direct phoneme-to-grapheme realization of (apico-)alveolar /s/ for <s> and interdental /θ/ for <z,ci,ce>, while *ceceo* is the voiceless dental fricative [s̺⁰] merger for <s> and <z,ci,ce>. The findings that several communities have

shifted from *ceceo* to *distinción* have led scholars to suggest that the demerger of *ceceo* presents an exception to Garde's and Herzog's Principles (Moya Corral & Sosiński, 2015:35; Regan, 2017a:152, 2017b:259; Villena, 2001:126; Villena & Vida Castro, 2012:117–18). To further examine these claims, the current study provides the first large-scale sub-segmental analysis of Andalusian coronal fricative variation based on 80 Western Andalusian speakers from the city of Huelva and the town of Lepe. The aims of the study were fivefold: (i) to assess the status of the centuries-old *ceceo* merger as a complete or near-merger; (ii) to determine if a demerger is in progress in Huelva and/or Lepe; (iii) to investigate which linguistic and extralinguistic factors promote the demerger of *ceceo* into *distinción*; (iv) to compare an urban speech community to a neighboring rural speech community to assess the extent of the change; and, (v) building on Lasarte Cervantes (2010), to provide a preliminary acoustic profile of *ceceo* and *distinción*.

BACKGROUND

Mergers, near-mergers, and splits

Merger reversal is disputed in the literature under the convention of Garde's Principle (Labov, 1994:311). Specifically, Garde (1961:38–9) stated, "Innovations can create mergers, but cannot reverse them" (*Labov's translation*, 1994:311). Labov suggested,

The *impossibility* of reversal established by Garde's Principle is not a deduction, but rests on empirical observations. Garde's Principle does not say that it is theoretically impossible for a person to reverse a merger accurately. It is based on the empirical observation that at no known time in the history of the language has such a reversal been accomplished by enough individual¹ speakers to restore two original word classes for a given language as a whole (1994:312).

Another major convention regarding mergers is Herzog's Principle, which states, "mergers expand at the expense of distinctions" (Herzog, 1965; Labov, 1994:313). This receives empirical support through the *Atlas of North American English* (Labov, Ash, & Boberg, 2006) in which mergers such as COT-CAUGHT have expanded over many regions.

Most linguists agree that a merger will not split for language-internal reasons alone, but rather by language-external motivations such as dialect contact or social pressures initiated by education or mass media (Hickey, 2004:134–35; Labov, 1994:343; Thomas, 2006:490). The split of a near-merger (Labov, 1975, 1994; Labov, Karen, & Miller, 1991; Labov, Yaeger, & Steiner, 1972), remains compatible with Garde's Principle, as there was never a complete phonetic neutralization,² but rather a subtle acoustic difference³ between phonemes. However, even when scholars take care to distinguish between near-mergers and complete mergers (Bullock & Nichols, 2017; Di Paolo & Faber, 1990; Faber & Di Paolo, 1995; Nunberg, 1980; Trudgill, 1974), there still seems to be evidence

for the split of a complete merger due to dialect contact. Specifically, studies have documented the split of the COT-CAUGHT merger among Canadians in NYC (Nycz, 2011, 2013), COT-CAUGHT merger among mobile New Englanders (Johnson, 2010), /w/-/v/ merger in lesser-known Englishes (Trudgill et al., 2003), NURSE-NORTH merger in Tyneside English (Maguire, 2008; Maguire et al., 2013; Watt, 1998), and /ɛ/ merger into /ɛ/-/e/ in Shanghainese due to language contact with Mandarin (Yao & Chang, 2016).

Maguire et al. (2013:234) posited that Labov's claim that no split has occurred at the level of a language is too strong (also Nycz, 2013:328) and that, instead of speaking about *languages*, one should speak about *individual* phonological systems, as intra- and interspeaker variability impacts an individual's phonological knowledge. The irreversibility of mergers becomes more susceptible to exceptions in a community constituted by individuals with a merger, others a split, and others in between the two norms. Maguire et al. (2013) argued that such is the case in situations of "swamping" (Thomas, 2006:490), where a merged community is inundated with migrant speakers⁴ with the phonemic distinction, resulting in exposure to grammars with and without the merger. Swamping enables the coexistence of the one-phoneme and two-phoneme systems in the same community with the prestige of the latter allowing for the gradual loss of the former. Consequently, Herzog's Principle "may be compromised when the merger involved is, or becomes heavily stigmatized" (Maguire et al., 2013:235).

European societal changes and dialect contact

In the twentieth century, large-scale societal changes throughout Europe increased dialect contact, which has led to the levelling of local traditional dialectal features in favor of regional or national features (Auer & Hinskens, 1996; Hinskens, Auer, & Kerswill, 2005; Mattheier, 2000; Trudgill, 1986). The transition from agrarian, to industrial, to a postindustrial society has increased urbanization, mobility, dialect contact, mass media, and educational attainment (Auer & Hinskens, 1996:4; Hinskens et al., 2005:23–24). The change from multigenerational to nuclear family living has reduced the dialect input from grandparents to grandchildren (Hinskens et al., 2005). These changes have catalyzed dialect levelling of traditional dialectal features throughout Europe, Spain included.

Andalusian coronal fricatives

Andalusian Spanish presents dialectal variation in the pronunciation of the graphemes <s>, <z>, <ci>, and <ce>, variously realized as [s̺], [θ], and [s̺⁰]. These phonetic norms are the result of the reduction of four medieval Spanish sibilants: /ts/, /dz/, /s/, /z/ (Penny, 2000:118–19, 2002:124–5). In Castilian Spanish, these sibilants were reduced to the voiceless interdental fricative /θ/ and the voiceless apicoalveolar fricative /s̺/, known as *distinción*, giving rise to minimal pairs such as *casa-caza* 'house-hunt.' *Distinción* reflects a direct grapheme-to-phoneme correlation of /s/ for <s> and /θ/ for <z,ci,ce>

TABLE 1. *Minimal pairs per idealized phonic norm*

	<i>casa</i> 'house'	<i>caza</i> 'hunt'
<i>Distinción</i>	[ˈka.ɣa]/[ˈka.ɣa]	[ˈka.θa]
<i>Ceceo</i>	[ˈka.ɣ̥a]	[ˈka.ɣ̥a]
<i>Seseo</i>	[ˈka.ɣa]	[ˈka.ɣa]

(Table 1). In Andalusian Spanish, however, the four medieval sibilants merged into dental /ɣ̥/ (Penny, 2000:118, 2002:125). This phonemic merger is phonetically realized as *ceceo* or *seseo*. *Ceceo* is realized as a voiceless dental fricative, represented as [θ̥], [ɣ̥⁰],⁵ or [θ̥^s] as it is perceptually similar to, but not quite as fronted as, [θ] (Hualde, 2005:153; Penny, 2000:118, 2002:125). *Seseo* is realized as an (predorso-)alveolar [ɣ̥] (Hualde, 2005:153; Penny, 2000:118). Most Andalusian speakers with *distinción* realize an alveolar [ɣ̥] as opposed to the apicoalveolar Castilian [ɣ̥] (Narbona, Cano, & Morillo, 1998:156). *Distinción* is not native to mid- and southern Andalusia but has been brought by dialect contact through rural emigration, migration of northern Spaniards to Andalusia, and increased education and mass media (Narbona et al., 1998:155–60).

Traditional dialectology works (Alvar, Llorente, Salvador, & Mondéjar, 1973,⁶ Navarro Tomás, Espinosa, & Rodríguez Castellano, 1933) demonstrated that *ceceo* and *seseo* dominated most of Andalusia through the mid-twentieth century. Beginning in the 1980s, sociolinguistic studies in Eastern Andalusia in Granada (Martínez & Moya Corral, 2000; Melguizo Moreno, 2007, 2009; Moya Corral & García Wiedemann, 1995; Moya Corral & Sosiński, 2015; Salvador, 1980) and Málaga (Ávila, 1994; Lasarte Cervantes, 2010; Villena, 1996, 2001, 2005, 2007; Villena, Sánchez, & Ávila, 1995; Villena & Requena, 1996) demonstrated a shift from *ceceo* (and *seseo*) to *distinción*. Contrastingly, studies in Western Andalusia in Sevilla (Carbonero, 1982, 1985; Dalbor, 1980; Lamíquiz & Carbonero, 1987; Sawoff, 1980), Jerez (Carbonero, Álvarez, Casas, & Gutiérrez, 1992), and Lepe (Mendoza Abreu, 1985) revealed the maintenance of *ceceo* and *seseo*. These differences, in addition to findings from other linguistic variables, led scholars to posit that Eastern Andalusian Spanish is structurally closer to Castilian Spanish than Western Andalusian Spanish (Hernández-Campoy & Villena, 2009; Moya Corral & Sosiński, 2015; Villena, 1996, 2008; Villena & Ávila, 2014; Villena & Vida Castro, 2012).

Recent studies in Western Andalusia, however, in Jerez⁷ (García-Amaya, 2008), Huelva (Regan, 2015, 2017a, 2017b), and peripheral towns around Huelva (de las Heras, Bardallo, Castrillo, Gallego, Padilla, Romero, Torrejón, & Vacas, 1996) suggest that *ceceo* is demerging into *distinción*. Studies in Sevilla (Gylfadottir, 2018; Santana, 2016, 2016–2017) also suggest that *seseo* is demerging into *distinción*. The leaders of change are younger generations, those with more formal education, and women. All previous studies of *ceceo* used impressionistic

analysis, with a few exceptions of acoustic analysis (Lasarte Cervantes, 2010; Regan, 2015, 2017b).

The speech communities: Huelva and Lepe

The city of Huelva has experienced significant societal changes since the 1950s when *ceceo* was the dominant norm (Alvar et al., 1973). The major catalyst for these changes was in 1964 when Dictator Franco's regime made Huelva home to one of Spain's largest industrial plants. Immigrants came from all over the province, especially from *la sierra de Aracena* (the north of the province where *distinción* is the norm), and from other parts of Spain, for employment in the factories (Feria Toribio, 1994; Martínez Chacón, 1992; Ruiz García, 2001). Morillo-Velarde (1997:209) posited that this immigration from the north of the province brought *distinción* speakers into the city. Huelva's population increased from 83,648 to 147,808 between 1950 and 2011 (INE⁸). Historically, Huelva's economy was based on agriculture and fishing, then was industrialized but has become increasingly service-oriented, as several factories have closed. In 2011 (INE), 6.5% of working Huelvans were employed in agriculture, 19.1% in manufacturing/construction, and 74.5% in service. Educational attainment of Huelva's inhabitants increased dramatically between 1950 (37.9% no studies; 60.1% primary; 1.3% secondary/professional; 0.7% university) and 2011 (9.9% no studies; 12.7% primary; 57.5% secondary/professional; 20% university).

Lepe, 33 km west of Huelva, never underwent industrialization, but has experienced other changes since the 1950s and 1980s when *ceceo* was the dominant norm (Alvar et al., 1973; Mendoza Abreu, 1985). Lepe maintained its population due to the predominance of fishing and agriculture (Feria Toribio, 1994:190), increasing from 9,285 to 26,538 between 1950 and 2011 (IECA, 2016). Despite this growth, Lepe still maintains its small town identity. While Lepe has retained its agricultural sector, it is increasingly relying on service and professional occupations and has essentially lost its fishing industry. In 2011 (INE), 29.7% of working Leperos were employed in agriculture, 16.3% in manufacturing/construction, and 54% in service. Educational attainment of Lepe's inhabitants increased dramatically between 1960 (78.2% no studies; 21% primary; 0.7% secondary/professional; 0.1% university) and 2011 (14.3% no studies; 20.7% primary; 61.8% secondary/professional; 3.2% university).

Finally, mass media began in 1956 with television broadcasting throughout Spain (Palacio, 2001; Rueda & Chicarro, 2006; Stewart, 1999), resulting in increased exposure to speakers with *distinción*.

RESEARCH QUESTIONS AND HYPOTHESES

First, is there evidence that there was a complete merger or a near-merger? As dialectology studies in Huelva and Lepe (Alvar et al., 1973; Mendoza Abreu,

1985; Navarro Tomás et al., 1933) reported a merger based on impressionistic analyses, there is no reason to assume *a priori* that *ceceo* is a complete or a near-merger. Given the lack of acoustic studies, there is no formal hypothesis.

Second, is there phonetic evidence that the split of the *ceceo* merger into *distinción* is underway in Huelva and/or Lepe? Regan's (2017a) auditory analysis of 38 sociolinguistic interviews from 2013 and 2014 provided segmental evidence of a demerger, while Regan's (2015) pilot subsegmental study of 15 sociolinguistic interviews in and around Huelva indicated that some speakers demonstrate differences between graphemes in intensity (dB). Building on these studies, it is hypothesized that there is a phonetic demerger from *ceceo* into *distinción*, that is, two separate phonemes of /s/ and /θ/.

Third, what social and linguistic factors contribute most to the probability that a speaker will manifest a split (*distinción*) rather than a merger (*ceceo*)? In terms of gender, age, and education, based on previous studies (Ávila, 1994; García-Amaya, 2008; Melguizo Moreno, 2007; Moya Corral & García Wiedemann, 1995; Regan, 2017a; Villena, 1996, 2007; Villena & Requena, 1996; *inter alia*), it is hypothesized that those most likely to favor *distinción* will be women, younger speakers, and those with more formal education. In line with the notion of the linguistic market (Bourdieu, 1991; Bourdieu & Boltanski, 1975; Sankoff & Laberge, 1978), it is hypothesized that those with professional and service occupations will demonstrate more evidence of *distinción* than those with manual occupations. As the shift toward *distinción* is a change from above (Labov, 1994:78), it is hypothesized that wordlists will elicit more *distinción* than reading passage data.

With respect to linguistic factors, following García-Amaya (2008), Regan (2017a), and Villena and Requena (1996), it is hypothesized that orthography will be a strong main effect, with significant acoustic differences found between word sets with <s> and <z,ci,ce>. Although previous impressionistic studies have not found syllable stress to be significant, it was included to test whether tonic syllables favor *distinción* more than atonic syllables given their acoustic prominence. Finally, as assimilation effects have been found in words with two fricatives (Moya Corral & García Wiedemann, 1995; Regan, 2017a; Santana, 2016, 2016–2017; Villena, 2007), it is hypothesized that words with two *different* orthographic environments will produce less acoustic distance between phonemes compared to words with two *same* orthographic environments.

Fourth, does rural Lepe demonstrate differences in the linguistic change as compared to urban Huelva? As Britain (2009, 2010, 2012) noted, although many assume that dialect contact and linguistic change is more common in urban areas, this should not be assumed *a priori*. Instead, Britain proposed that variationists focus on causal social processes of change, regardless of environment. Thus, it is hypothesized that similar social factors will influence both communities, although perhaps at different rates of change.

TABLE 2. *Speakers by origin, birth year, age (in 2015), and gender*

Birth year	Age	Huelva (n = 40)		Lepe (n = 40)	
		Men (n = 20)	Women (n = 20)	Men (n = 20)	Women (n = 20)
1980–1997	18–35	7	8	10	7
1955–1979	36–60	9	8	5	8
1929–1954	61–86	4	4	5	5

Finally, what are the acoustic properties of *distinción* and *ceceo*? Based on Lasarte Cervantes' (2010) findings, it is hypothesized that mean intensity (dB) will serve as a valid acoustic measure with *distinción* having higher mean intensity for [s] than [0] and with intermediate *ceceo* [s⁰] realizations.

DATA AND METHODOLOGY

Participants

This apparent time study (Labov, 1994:45) was conducted during summer 2015 and 2016. Participants were recruited through the author's social networks in Huelva and Lepe and subsequent snowball sampling of "friends of friends" (Milroy, 1980:453). Eighty participants were selected from a larger sample in order to balance populations based on occupational background, origin (40 Huelva, 40 Lepe), gender (40 men, 40 women), and age (overall, range: 18–86, *M*: 43.7, *SD*: 17.2; Huelva, range: 18–70, *M*: 43.03, *SD*: 16.03; Lepe, range: 18–86, *M*: 44.4, *SD*: 18.48) (online Appendix I for demographics). Although age is treated as continuous in the analysis in order to examine a gradient apparent time change, Table 2 presents binned categories of age and birth year by origin and gender.

Materials & Procedure

Data collection consisted of an informal sociolinguistic interview (Labov, 1972:79–80), a reading passage, a wordlist, and metalinguistic and demographic questions, in that order; only the passage and list are analyzed here. Recordings were conducted by the author in quiet places such as the interviewees' homes, the Universidad de Huelva, and offices at Lepe's senior center or municipal theater. Participants were recorded with a solid-state digital recorder Marantz PMD660 (digitized at 44.1kHz, 16-bit sampling rate) wearing a Shure WH20XLR Headworn Dynamic Microphone. Two distinct levels of style were analyzed: reading passage and wordlist, following Labov's (1972:99) attention to speech approach. Participants read a one-page passage, constructed by the author, of 575 words with 170 syllable-initial target tokens (97 <s>; 73 <z,ci,ce>) (see Regan, 2017b:279). Only syllable-initial coronal fricatives were considered, as syllable coda are aspirated or elided in Western Andalusian

Spanish (Villena, 2008). The passage focused on local rivalries, customs, foods, and lifestyles. It was designed to be informal, interesting, relatable, and enjoyable so that speakers would pay more attention to the themes than their speech. The wordlist included both minimal pair and nonminimal pair tokens that contained 86 syllable-initial target tokens (44 <s>; 42 <z,ci,ce>) as well as distractors (see Regan, 2017b:281). Several words contained more than one token (i.e., *gracioso* ‘funny’). The author never asked participants to produce *distinción* nor if they were capable of producing *distinción*, but rather asked if they would be able to read the passage and wordlist. Two speakers were not able to read the passage, one due to limited literacy and the other due to not having their glasses during the recording. All were able to read the wordlist. Afterwards, interviewees orally responded to demographic questions.

Preprocessing of data

Several tokens were eliminated due to speakers’ misreading or skipping a word, or an overlap of external noise, resulting in a total of 19,420 tokens included in the analysis (passage: 12,651 tokens; wordlist: 6,769 tokens). The data were forced-aligned using FASE (Wilbanks, 2015). Figure 1 shows an example of an /s/ realization from the passage reading: *en casa de Pepe* ‘in Pepe’s house.’ Once the alignments were made, each text grid fricative boundary was corrected by hand in Praat (Boersma & Weenink, 2017) to assure that the fricatives were properly segmented. Specifically, following Jongman, Wayland, and Wong (2000:1255), the fricative onset was marked at the point in which high frequency energy appears on the spectrogram and where aperiodic zero crossings increase dramatically. The fricative offset was marked at the end of the aperiodic noise prior to the rise of the following vowel’s periodicity and intensity (dB).

Independent factors

Six social factors were included: gender, age (18–86), education, occupation, origin, and speech style. For education, participants were placed in the highest degree earned or actively completing. For occupation, speakers were divided into three categories: *manual* (fishermen, construction, factory, field workers); *service* (bartenders, cashiers, small store workers); *professional* (teachers, professors, lawyers, civil servants, nurses).

Three linguistic factors were included: orthography, syllable stress, and assimilation. Initially, preceding phonetic context and following vowel were considered. However, given the lack of Spanish words containing <z> + /u, o/, they were removed from analyses. Additionally, functionality, whether fricatives distinguished minimal pairs, was also considered, as phonological maintenance is increased when phonemes serve a functional load (Villena, 2007; Wedel, Kaplan, & Jackson, 2013). However, it was not significant and thus was removed from analyses. While orthography is related to education, it is placed with linguistic factors following previous studies. Assimilation refers to whether there is an additional coronal fricative in the same word. For example, tokens in

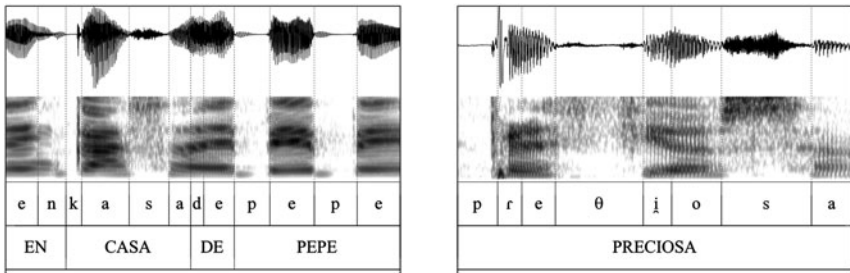


FIGURE 1. *Left*: Example of /s/ segmentation in a forced-aligned textgrid; *Right*: Andalusian [θ] and [s̺] produced by 29-year-old Huelva woman with *distinción*.

cereza ‘cherry’ have the *same* orthographic environment (<z,ci,ce>); tokens in *precioso* ‘precious’ have *different* orthographic environments (<z,ci,ce> versus <s>); and, the token in *Mazagón*, a town near Huelva, has *no* additional fricative.

Dependent measures

An automated Praat script (Elvira-García, 2014) was used to measure all tokens. The script uses a Filter pass Hand band (1,000, 11,000, 100). For the spectral moments, the script creates an averaged power spectrum using the “to Ltas” function, in which spectral slices are subject to cepstral smoothing for Fast Fourier Transform analysis, in line with previous studies (Forrest, Weismer, Milenkovic, & Dougall, 1988; Jesus & Shadle, 2002; Jongman et al., 2000; Shadle, 2012). The script took the following acoustic measures: the four spectral moments (center of gravity (Hz), variance (Hz), skewness, kurtosis), spectral peak (Hz), mean intensity (dB), and duration (ms). Center of gravity (henceforth COG) is the mean of spectral energy (Ladefoged, 2003:156), a useful measure for coda /s/ (Erker, 2010; File-Muriel & Brown, 2011). Variance (Hz) is the “range” of spectral energy (Jongman et al., 2000:1253). Skewness refers to the spectral tilt and kurtosis to the peakedness of the spectrum (Jongman et al., 2000:1253). The rationale for using several acoustic parameters is that previous studies on near-mergers have found that speakers have utilized a nonprimary acoustic parameter to maintain a subtle phonetic difference in phonemes (Bullock & Nichols, 2017; Di Paolo & Faber, 1990). Figure 1 displays differences between [θ] and [s̺] in COG (spectrogram) and intensity (waveform).

In terms of spectral⁹ parameters, /s/ has higher COG than /θ/, but /θ/ has higher variance (Hz) than /s/ (Jongman et al., 2000; Nissen & Fox, 2005); /s/ has greater negative skewness¹⁰ than /θ/ (Jongman et al., 2000), and, in general, spectral peak (Hz) is higher for /θ/ than /s/ (Fox & Nissen, 2005; Jongman, et al. 2000; Martínez Celdrán & Fernández Planas, 2007). Findings for kurtosis are mixed, where Jongman et al. (2000) found higher kurtosis for /s/ while Fox and Nissen (2005) found higher kurtosis for /θ/. However, there are biological sex-related acoustic differences for spectral parameters. Specifically, women compared to men have higher COG (Flipsen, Shriberg, Weismer, Karlsson, &

McSweeney, 1999; Fox & Nissen, 2005; Haley, Seelinger, Callahan, Mandulak, & Zajac, 2010; Jongman et al., 2000; Maniwa, Jongman, & Wade, 2009), higher variance (Jongman et al., 2000), more negative skewness (Flipsen et al., 1999; Fox & Nissen, 2005; Jongman et al., 2000), and higher kurtosis (Jongman et al., 2000). Spectral peak is complicated as men and women do not differ for /θ/, but women have a higher spectral peak for /s/ than men, sometimes resulting in a higher spectral peak for /s/ than /θ/ for women (Fox & Nissen, 2005; Jongman et al., 2000). For the current study, each community has the same number of men and women, which helps to neutralize sex-based effects on spectral parameters. Additionally, the results section proposes a Demerger Index to normalize sex-related spectral differences.

In terms of amplitudinal parameters, /s/ has higher mean intensity (dB) than /θ/ for nonnormalized mean intensity (Behrens & Blumstein, 1988a, 1988b; Lasarte Cervantes, 2010; Stevens, 1960) and for relative or dynamic intensity (Fox & Nissen, 2005; Jongman et al., 2000; Martínez Celdrán & Fernández Planas, 2007; Nissen & Fox, 2005; Shadle & Mair, 1996; Stevens, 1985). For the temporal parameter, /s/ has longer duration (ms) than /θ/ (Behrens & Blumstein, 1988a; Fox & Nissen, 2005; Jongman et al., 2000). There are no sex effects for intensity (Fox & Nissen, 2005; Jongman et al., 2000; Koenig, Shadle, Preston, & Mooshammer, 2013) or duration (Jongman et al., 2000).

Statistical analysis

For each dependent measure, a mixed effects linear regression model was run using the *lme4* (Bates, Maechler, Bolker, & Walker, 2015) and *lmerTest* (Kuznetsova, Brockhoff, & Christensen, 2014) packages in R (R Core Team, 2017), including all social and linguistic factors as fixed factors with speaker and word as random factors. *Post hoc* analyses were conducted with estimated marginal means, *emmeans* (Lenth, Singmann, Love, Buerkner, & Herve, 2018), in order to analyze categorical predictors with more than two levels. The data from all 80 participants was incorporated into these models for a total of 19,420 tokens. Within each model, nonsignificant independent variables were removed from subsequent models. Marginal R-squared (R^2_m) and conditional R-squared (R^2_c) values were obtained for each model in order to assess the goodness-of-fit of the variation per measure (Nakagawa & Schielzeth, 2013). R^2_m conveys the amount of variation accounted for by the fixed factors alone, while R^2_c represents the amount of variation accounted for by both fixed and random effects. These models revealed the following values for each measure in descending order from best explanation of variation to least: COG (R^2_m : 0.390, R^2_c : 0.587), mean intensity (R^2_m : 0.328, R^2_c : 0.676), duration (R^2_m : 0.284, R^2_c : 0.565), skewness (R^2_m : 0.226, R^2_c : 0.405), variance (R^2_m : 0.221, R^2_c : 0.414), spectral peak (R^2_m : 0.184, R^2_c : 0.324), and kurtosis (R^2_m : 0.029, R^2_c : 0.180). As COG and mean intensity (henceforth MI) best explain the variation, only these models are presented. Paired Welch Two Sample t-tests with Bonferroni correction were used to analyze individual speaker differences for word sets with <s> and <z,ci,ce> for all

TABLE 3. Summary of linear mixed effects regression model for COG, speaker and word as random factors; $n = 19,420$ ($R^2_m: 0.390$, $R^2_c: 0.588$). EMM = estimated marginal means

Predictor	EMM	Estimate	SE	<i>t</i> -value	<i>n</i>	<i>p</i> -value
(Intercept)	--	4335.9	449.7	9.6	--	***
Orthography (Ref = < <i>s</i> >)	5148	--	--	--	10683	--
< <i>z</i> , <i>ci</i> , <i>ce</i> >	3325	-1187.4	100.9	-11.8	8737	***
Assimilation (Ref =Different)	4238	--	--	--	3804	--
No	4253	195.1	78.6	2.5	13315	*
Same	4218	306.2	122.6	2.5	2301	*
Gender (Ref = Men)	3787	--	--	--	9594	--
Women	4686	1995.3	190.0	10.5	9826	***
Age	--	-21.6	6.7	-3.2	19420	**
Education (Ref =Primary)	4141	--	--	--	4390	--
Secondary	4355	600.5	301.5	2.0	7020	*
University	4213	332.5	446.0	0.7	8010	0.46
Occupation (Ref =Manual)	4160	--	--	--	4311	--
Professional	4409	363.2	345.9	1.1	9314	0.30
Service	4140	205.3	154.7	1.3	5795	0.19
Origin (Ref = Huelva)	4136	--	--	--	9936	--
Lepe	4337	159.6	189.2	0.8	9484	0.40
Orthog:Assim. (Ref=< <i>s</i> >:Diff)	4980	--	--	--	1907	--
< <i>z</i> >:No	3330	-361.7	80.4	-4.5	5612	***
< <i>z</i> >:Same	3149	-653.4	197.3	-3.3	1228	**
Orthog:Gender (Ref = < <i>s</i> >:Men)	4150	--	--	--	5282	--
< <i>z</i> >:Women	3226	-2192.7	39.4	-55.7	4425	***
Orthog:Age (Ref = < <i>s</i> >:Age)	--	--	--	--	--	--
< <i>z</i> >:Age	--	32.8	1.4	23.4	--	***
Orthog:Edu (Ref = < <i>s</i> >:Primary)	4837	--	--	--	2399	--
< <i>z</i> >:Secondary	3272	-774.7	67.0	-11.6	3151	***
< <i>z</i> >:University	3257	-521.8	96.4	-5.4	3595	***
Othog:Occup (Ref = < <i>s</i> >:Manual)	4958	--	--	--	2364	--
< <i>z</i> >:Professional	3497	-227.5	82.7	-2.8	4179	**
< <i>z</i> >:Service	3116	-450.8	61.0	-7.4	2611	***
Othog:Origin (Ref = < <i>s</i> >:Huelva)	5068	--	--	--	5472	--
< <i>z</i> >:Lepe	3446	82.9	38.8	2.1	4273	*

Note: * = $p < 0.05$, ** = $p < 0.01$, *** = $p < 0.001$

seven measures. Finally, follow-up mixed effects linear regressions were run for COG and MI Demerger Indexes with social variables as fixed factors and speaker as a random factor. Images were created with *ggplot2* (Wickham, 2013).

RESULTS

Community-wide analysis: COG and MI linear regressions

COG and MI regression tables display the *emmeans* (EMM), estimate, standard error (SE), *t*-value, number of tokens per level (*n*), and *p*-value. Positive estimates indicate a higher COG/MI compared to the reference value, while negative estimates indicate a lower COG/MI compared to the reference value. Given the importance of the direct grapheme-to-phoneme correspondence, only

the main effect of orthography and the interaction of orthography with other fixed factors is discussed. The best-fit mixed effects linear regression model for COG is shown in Table 3.

The main effect of orthography indicates that <s> had a significantly higher COG than <z,ci,ce> (henceforth <z>) ($p < 0.001$). For the orthography by assimilation interaction, <s> had a higher COG than <z> for *different* additional fricative ($p < 0.001$), for *no* additional fricative ($p < 0.001$), and for *same* additional fricative ($p < 0.001$). For <s>, *different* had a lower COG than *no* additional fricative ($p < .05$) and *same* ($p < 0.05$). No other differences were significant. The interaction indicates that words with two *different* orthographic environments have a smaller COG difference between phonemes as compared to words with *no* additional fricatives or words with the *same* fricative environment (Figure 2).

For the orthography by gender interaction, <s> had higher COG than <z> for men ($p < 0.001$) and women ($p < 0.001$). However, women had higher COG for <s> than men ($p < 0.001$). The interaction indicates a larger separation in phonemes for women than men (Figure 2). For the orthography by education interaction, <s> had higher COG than <z> for those with primary ($p < 0.001$), secondary ($p < 0.001$), and university education ($p < 0.001$). The interaction indicates that those with primary education have smaller COG differences between phonemes than those with secondary or university education (Figure 2).

The orthography by age interaction demonstrates that, for a one-year increase in age, COG for <s> decreases by 21.64 Hz and for <z> increases by 11.20 Hz. This indicates that the difference in COG between orthographic environments is largest between younger speakers, and this difference decreases as age increases (Figure 2). A Pearson correlation indicated a weak negative association between COG and age for <s> ($n = 10683$, $df = 10681$, $r = -0.246$, $R^2 = 0.061$, $p < 0.0001$) and a weak positive association between COG and age for <z> ($n = 8737$, $df = 8735$, $r = 0.097$, $R^2 = 0.009$, $p < 0.0001$). For the orthography by occupation interaction, <s> had higher COG than <z> for those with manual ($p < 0.001$), service ($p < 0.001$), and professional occupations ($p < 0.001$). The interaction indicates that those with manual occupations have a smaller difference in COG between <s> and <z> than those with service or professional occupations (Figure 2). For the orthography by origin interaction, <s> had higher COG than <z> for Huelva ($p < 0.001$) and Lepe ($p < 0.001$). The interaction indicates that Huelva has a larger difference in COG between <s> and <z> than Lepe (Figure 2).

The best-fit mixed effects linear regression model for MI is shown in Table 4. The main effect of orthography indicates that <s> had a significantly higher MI than <z> ($p < 0.001$). For the orthography by assimilation interaction, <s> had a higher MI than <z> for *different* ($p < 0.001$), *no* ($p < 0.001$), and *same* additional fricative ($p < 0.001$). For <s>, *different* had a smaller MI than *no* ($p < 0.001$) and *same* additional fricative ($p < 0.05$). The interaction indicates that words with two *different* orthographic environments have a smaller MI difference between phonemes as compared to words with *no* additional fricatives or words with the *same* orthographic environment (Figure 3). For

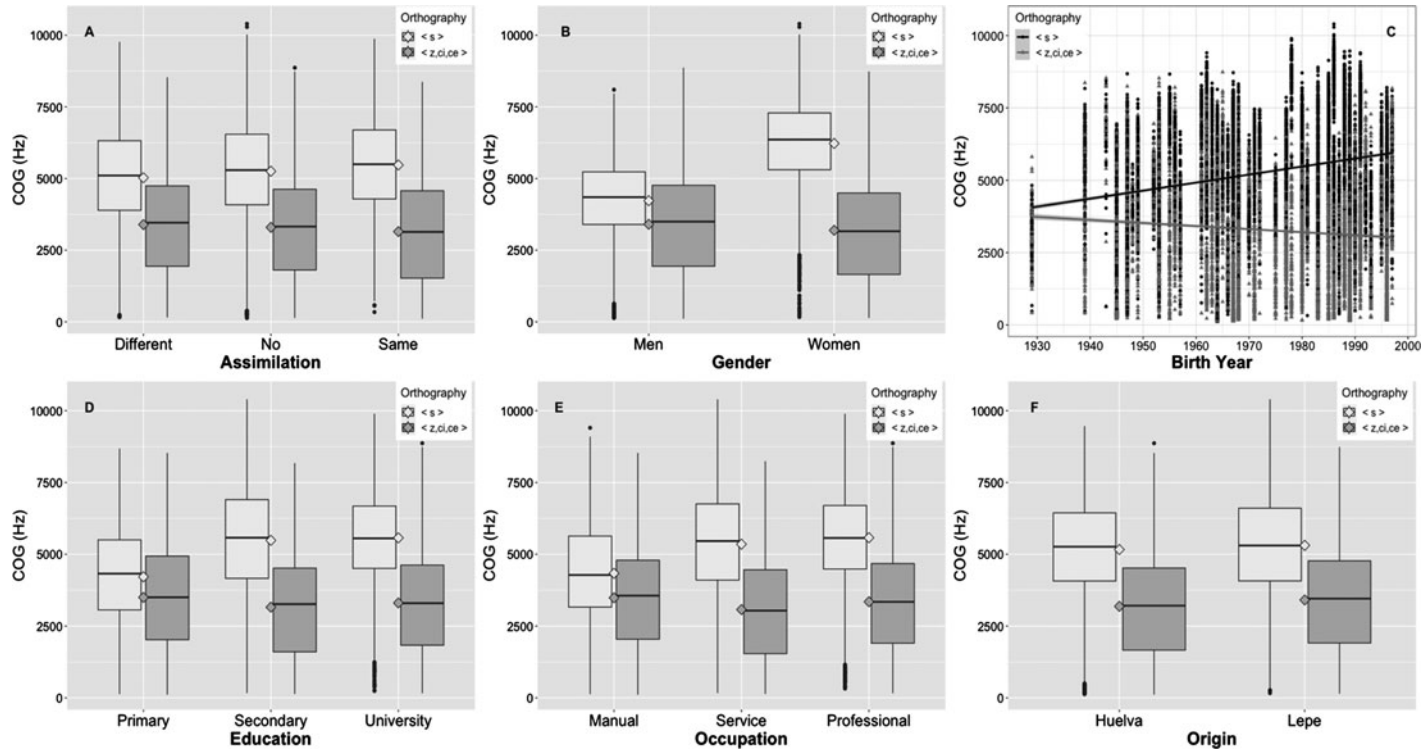


FIGURE 2. Interactions of orthography by assimilation (a), by gender (b), by age¹¹ (1929 = 86, 1997 = 18) (c), by education (d), by occupation (e), and by origin (f) for COG (Hz).

TABLE 4. Summary of linear mixed effects regression model for MI, speaker and word as random factors; $n = 19,420$ ($R^2m: 0.327, R^2c: 0.676$). EMM = estimated marginal means

Predictor	EMM	Estimate	SE	t-value	n	p-value
(Intercept)	--	52.0	1.9	27.0	--	***
Orthography (Ref = <s>)	57.8	--	--	--	10683	--
<z,ci,ce>	52.4	-3.1	0.3	-9.4	8737	***
Assimilation (Ref = Different)	54.8	--	--	--	3804	--
No	55.5	1.0	0.3	3.8	13315	***
Same	55.0	1.0	0.4	2.5	2301	*
Stress (Ref = Atonic)	55.0	--	--	--	11552	--
Tonic	55.2	1.1	0.2	6.2	7868	***
Gender (Ref = Men)	56.6	--	--	--	9594	--
Women	53.6	-1.7	0.8	-2.1	9826	*
Age	--	0.1	0.03	1.8	19420	0.08
Education (Ref = Primary)	54.2	--	--	--	4390	--
Secondary	55.7	2.5	1.3	2.0	7020	0.05
University	55.4	1.9	1.9	1.0	8010	0.32
Occupation (Ref = Manual)	54.2	--	--	--	4311	--
Professional	55.3	2.6	1.4	1.8	9314	0.08
Service	55.8	2.0	0.5	4.2	5795	***
Origin (Ref = Huelva)	54.2	--	--	--	9936	--
Lepe	56.0	6.4	0.8	0.8	9484	0.43
Orthog:Assim. (Ref = <s>:Diff)	57.2	--	--	--	1907	--
<z>:No	52.8	-0.7	0.3	-2.5	5612	*
<z>:Same	51.8	-1.7	0.7	-2.3	1228	*
Othog:Stress (Ref = <s>:Atonic)	57.3	--	--	--	6941	--
<z>:Tonic	51.9	-2.1	0.3	-6.8	4126	***
Orthog:Gender (Ref = <s>:Men)	58.7	--	--	--	5282	--
<z>:Women	50.2	-2.7	0.1	-24.2	4425	***
Orthog:Age (Ref = <s>:Age)	--	--	--	--	--	--
<z>:Age	--	0.05	0.004	11.8	--	***
Orthog:Edu (Ref = <s>:Primary)	56.4	--	--	--	2399	--
<z>:Secondary	52.5	-1.9	0.2	-10.0	3151	***
<z>:University	52.6	-1.3	0.3	-4.6	3595	***
Othog:Occup (Ref = <s>:Manual)	56.3	--	--	--	2364	--
<z>:Professional	51.7	-3.0	0.2	-12.7	4179	***
<z>:Service	53.3	-0.8	0.2	-4.5	2611	***
Othog:Origin (Ref = <s>:Huelva)	57.5	--	--	--	5472	--
<z>:Lepe	53.8	2.2	0.1	19.9	4273	***

Note: * = $p < 0.05$, ** = $p < 0.01$, *** = $p < 0.001$

orthography by stress, <s> had a higher MI than <z> for atonic ($p < 0.001$) and tonic syllables ($p < 0.001$). For <s>, atonic had lower MI than tonic ($p < 0.001$). For <z>, atonic had greater MI than tonic ($p < 0.001$). The interaction indicates that tonic syllables have a greater MI difference between phonemes than atonic syllables.

The orthography by age interaction demonstrates that for a one-year increase in age, MI for <s> increases by 0.051 dB and MI for <z> increases by 0.098 dB. Thus, with each increase in year, the difference in MI between phonemes decreases (Figure 3). A Pearson correlation indicated a nonsignificant weak positive association between MI and age for <s> ($n = 10683$, $df = 10681$, $r = 0.006$,

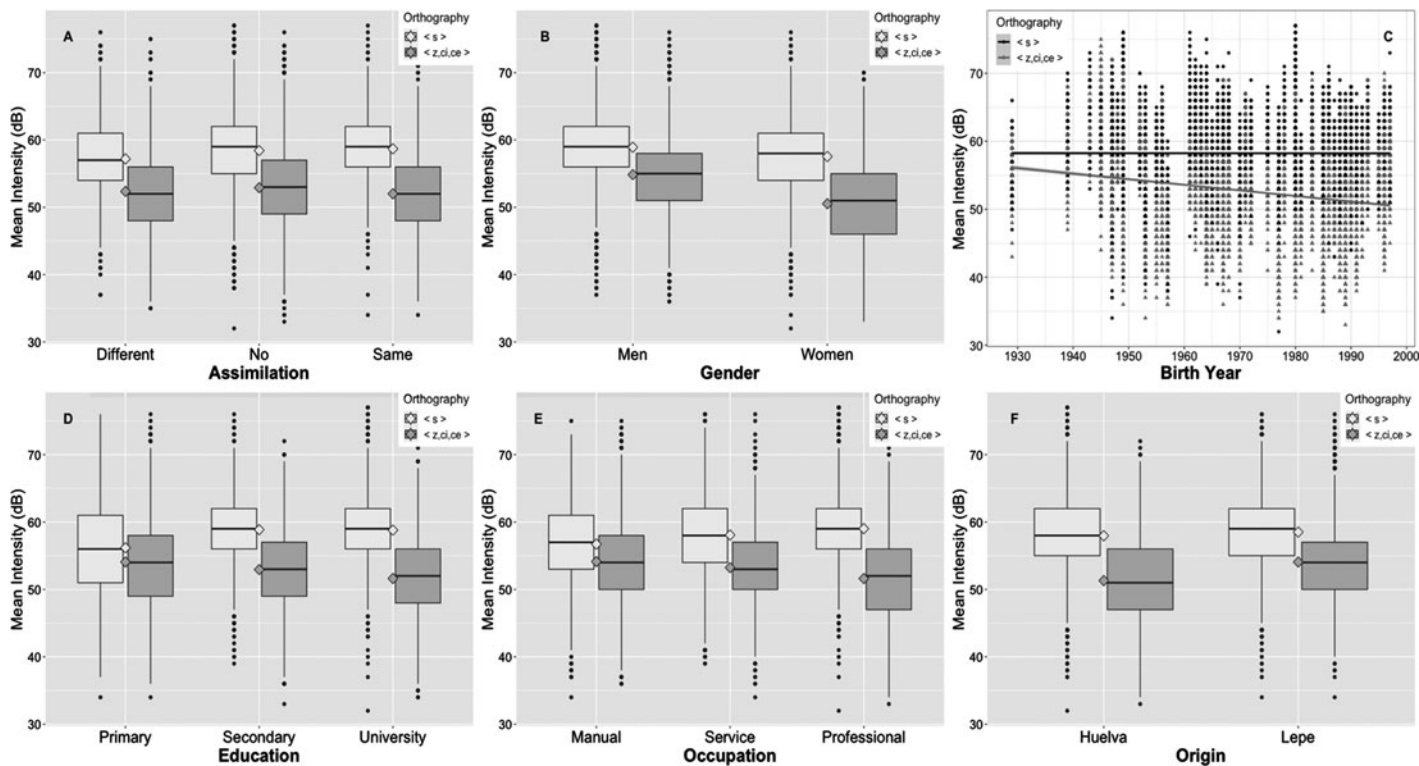


FIGURE 3. Interactions of orthography by assimilation (a), by gender (b), by age (1929 = 86, 1997 = 18) (c), by education (d), by occupation (e), and by origin (f) for MI (dB).

TABLE 5. Number of speakers per measure per style (passage, list) demonstrating a significant difference between <s> and <z,ci,ce> in expected direction

	COG	Variance	Skewness	Kurtosis	Spectral Peak	MI	Duration	possible n
Pass.	57	52	54	19	7	59	2	/78
List	51	60	54	5	10	68	9	/80

$R^2 = 0.000004$, $p = 0.55$), but a weak positive association between MI and age for <z> ($n = 8737$, $df = 8735$, $r = 0.227$, $R^2 = 0.052$, $p < 0.0001$). For the orthography by gender interaction, <s> had higher MI than <z> for men ($p < 0.001$) and women ($p < 0.001$). For <s>, men had higher MI than women ($p < 0.05$). For <z>, men had higher MI than women ($p < 0.001$). The interaction indicates that there is a larger separation in MI between phonemes for women than men (Figure 3).

For the orthography by education interaction, <s> had higher MI than <z> for those with primary ($p < 0.001$), secondary ($p < 0.001$), and university education ($p < 0.001$). The interaction indicates that there is a larger separation in MI between phonemes for those with secondary or university education compared to those with primary education (Figure 3). For the orthography by occupation interaction, <s> had a greater MI than <z> for those with manual ($p < 0.001$), service ($p < 0.001$), and professional occupations ($p < 0.001$). For <s>, those with manual occupations had smaller MI than those with service occupations ($p < 0.001$). For <z>, those with manual occupations had smaller MI than those with service occupations ($p < 0.05$). The interaction indicates that there is a larger separation in MI between phonemes for those with service or professional occupations than those with manual occupations (Figure 3). For the orthography by origin interaction, <s> had higher MI than <z> for Huelva ($p < 0.001$) and Lepe ($p < 0.001$). For <z>, Lepe had higher MI than Huelva ($p < 0.01$). The interaction indicates that there is a larger separation in MI between phonemes for Huelva than Lepe (Figure 3).

Individual speaker analysis

In addition to the community-wide trends, individual speakers were analyzed to see if there are individuals with a complete merger, or perhaps a near-merger, as well as to analyze the number of speakers who demonstrate statistically significant differences on various dependent measures between word sets with <s> or <z,ci,ce>. A paired Welch Two Sample t-test was conducted for all seven dependent measures per style (passage, wordlist) based on orthography for each individual. As there were 14 t-tests run for each individual, a Bonferroni correction was made. Specifically, the alpha of 0.05 was divided by fourteen to produce 0.0036. Thus, only p -values below the adjusted alpha of 0.0036 were considered significant. Table 5 demonstrates that the most robust measures are

COG, variance, skewness, and MI. Given the lack of significance for so many speakers for kurtosis, spectral peak, and duration, they will not be discussed further as they do not appear to be adequate measures to distinguish Andalusian coronal fricatives. As one can observe from the individual speaker mean scores from Huelva (online Appendix II) and Lepe (online Appendix III), the majority of speakers are able to produce a significant difference between <s> and <z,ci,ce> in at least one of the acoustic parameters. However, for the reading passage, there were seven speakers (L6, L9, L46, L47, H4, H12, H54) that did not produce a significant difference for any acoustic measure, indicating a complete merger. There were two additional speakers (H27, H59) that only demonstrated significance on one measure: variance. For the wordlist, there were six speakers (L3, L23, L54, H32, H54, H59) that did not show a significant difference for any acoustic measure. There were an additional four speakers (L46, L47, H12, H59) that only demonstrated significance on one measure: variance.

For a visualization of the individual data, here we look at one speaker who realizes what appears to be a complete merger, and another speaker with a clear separation of phonemes for the reading passage. Figure 4 plots the two most robust measures of MI on the x-axis and COG on the y-axis. L9's scatterplot reflects the lack of significant difference in both measures. L9's mean <s> (4,280.34 Hz, 48.68 dB) and <z,ci,ce> (4,336.64 Hz, 48.97 dB) are separated by -130.47 Hz and -0.295 dB. However, H20 produces a clear separation between phonemes, with the exception of two <s> outliers. H20's mean <s> (7,317 Hz, 55.84 dB) and <z> (2,145.33 Hz, 41.55 dB) are separated by 5,172.67 Hz and 14.29 dB. Figure 4 demonstrates a similar pattern with skewness on the x-axis and variance on the y-axis. L9's mean <s> (0.56 skewness, 3,183 Hz variance) and <z> (0.46 skewness, 3,183 Hz variance) overlap completely, while H20's mean <s> (-1.51 skewness, 1,750 Hz variance) and <z> (2.42 skewness, 2,637 Hz variance) are fully separated. It appears that the *ceceo* merger presents intermediate values between alveolar [s] and interdental [θ] for COG, MI, and skewness, but perhaps a variance similar to [θ].

Demerger Index analysis

Given the large amount of inter- and intraspeaker variation across measures, a "Demerger Index" was created to conduct follow-up analyses. The purpose of creating a Demerger Index was threefold: (i) to normalize the data to avoid sex-related effects on spectral parameters; (ii) to quantify the degree of demerger as individual analyses of speakers only reveal whether or not differences were significant; and (iii) to better investigate the main effects and interactions of the social factors, as the previous analyses had to incorporate orthography in interaction with all factors. The Demerger Index was calculated by subtracting an individual's means from each orthographic environment per style (passage = $\mu_{\langle s \rangle} - \mu_{\langle z,ci,ce \rangle}$; list = $\mu_{\langle s \rangle} - \mu_{\langle z,ci,ce \rangle}$). Thus, all means were calculated over all linguistic factor environments. Demerger Index scores should be interpreted

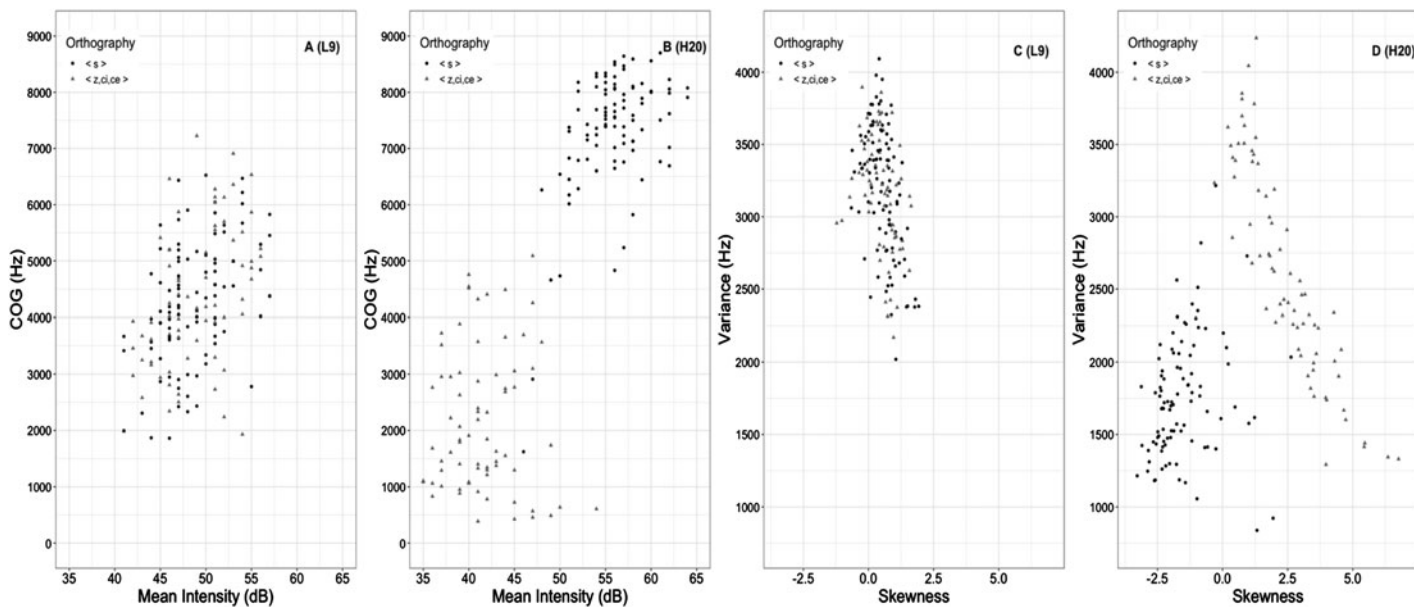


FIGURE 4. Scatterplots of COG (Hz) by MI (dB) for reading passage for L9 (a) and H20 (b); Scatterplots of variance (Hz) by skewness for reading passage for L9 (c) and H20 (d).

as follows: larger index numbers suggest a larger separation in phonemes based on the given acoustic cue, while scores closer to zero indicate either a merger or a near-merger. Given COG, MI, skewness, and variance were the most robust measures from the individual speaker analysis, demerger indexes were created for each of these measures. Expected directions for acoustic measures of a speaker with *distinción* (/s/ and /θ/) should produce positive indexes for COG, positive indexes for MI, negative indexes for skewness, and negative indexes for variance. For each measure, a mixed effects linear regression model was run, including all social factors as fixed factors with speaker as a random factor. Within each model, each factor that was not significant was removed from subsequent models. Marginal R^2 values and conditional R^2 values were obtained for each model in order to assess the best fit of variation per measure: COG (R^2_m : 0.513, R^2_c : 0.937), MI (R^2_m : 0.440, R^2_c : 0.859), skewness (R^2_m : 0.256, R^2_c : 0.918), and variance (R^2_m : 0.229, R^2_c : 0.849). As the COG and MI Demerger Indexes produced better models of the variation, only they will be discussed.

COG and MI Demerger Index regression tables display the *emmeans* (EMM), estimate, standard error (SE), *t*-value, number of tokens per level (*n*), and *p*-value. Positive estimates indicate a higher COG/MI Demerger Index compared to the reference value, while negative estimates indicate a lower COG/MI Demerger Index compared to the reference value. The best-fit mixed effects linear regression model for COG Demerger Index is shown in Table 6.

The main effect of gender indicates that women have a larger COG Demerger Index than men ($p < 0.001$). The gender by age interaction indicates that, for each year increase in age, men's COG Demerger Index decreases by 13.28 Hz while women's Demerger Index decreases by 68.23 Hz (Figure 5). Pearson correlations

TABLE 6. Summary of mixed effects linear regression for COG Demerger Index, speaker as a random factor; $n = 158$ (R^2_m : 0.513, R^2_c : 0.937). EMM = estimated marginal means

Predictor	EMM	Estimate	SE	<i>t</i> -value	<i>n</i>	<i>p</i> -value
(Intercept)	--	1391.6	641.6	2.2	--	*
Gender (Ref = Men)	890	--	--	--	79	--
Women	3026	4518.04	871.7	5.2	79	***
Age	--	-13.3	12.8	-1.04	158	0.30
Occupation (Ref = Manual)	1644	--	--	--	36	--
Professional	1815	-178.2	428.2	-0.4	74	0.68
Service	2415	674.3	434.5	1.6	48	0.12
Style (Ref = List)	2050	--	--	--	80	--
Passage	1866	-482.0	168.01	-2.9	78	**
Gender:Age (Ref = Men:Age)	--	--	--	--	--	--
Women:Age	--	-55.0	18.4	-3.0	--	**
Style:Occup. (Ref = List:Manual)	1906	--	--	--	19	--
Passage:Professional	1924	699.9	203.2	3.4	37	***
Passage:Service	2270	193.3	219.9	0.9	24	0.38

Note: * = $p < 0.05$, ** = $p < 0.01$, *** = $p < 0.001$

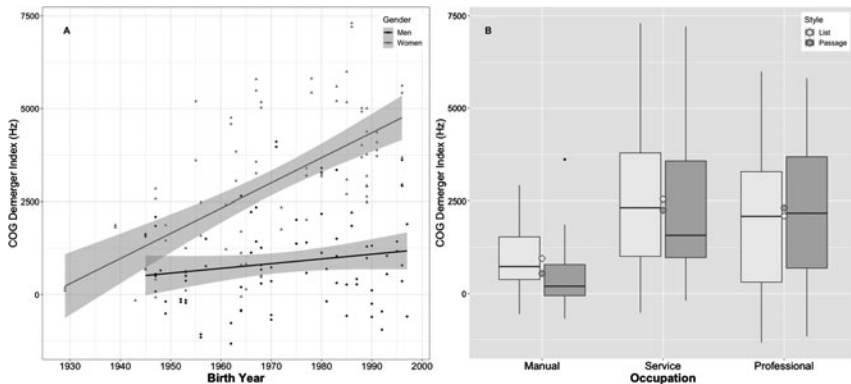


FIGURE 5. Gender by age (1929 = 86, 1997 = 18) interaction (a) and occupation by style interaction (b) for COG Demerger Index (Hz).

indicated that there was a nonsignificant negative association between age and COG Demerger Index for men ($n = 78$, $df = 77$, $r = -0.175$, $R^2 = 0.031$, $p = 0.12$) but a significant moderate negative association between age and COG Demerger Index for women ($n = 78$, $df = 77$, $r = -0.609$, $R^2 = 0.371$, $p < 0.001$). The main effect of style indicates that the wordlist had a larger COG Demerger Index than the reading passage ($p < 0.05$). The style by occupation interaction indicates that the COG Demerger Index is greater in the wordlist than the reading passage for those with manual ($p < 0.01$) and service occupations ($p < 0.05$) but no significant difference for professional occupations ($p = 0.06$) (Figure 5).

Table 7 displays the best-fit mixed effects linear regression for MI Demerger Index. The main effect of gender indicates that women had a higher MI Demerger Index than men ($p < 0.001$) (Figure 6). The main effect of age indicates that, with each year increase in age, the MI Demerger Index decreases by 0.064 dB (Figure 6). A Pearson correlation indicates a moderately negative association between increase in age and MI Demerger Index ($n = 158$, $df = 156$, $r = -0.345$, $R^2 = 0.119$, $p < 0.001$). The main effect of style indicates that the wordlist had a higher MI Demerger Index than the reading passage ($p < 0.0001$). The main effect of origin indicates that Huelva had a higher MI Demerger Index than Lepe ($p < 0.001$) (Figure 6). The main effect of occupation indicates that those with professional occupations had a higher MI Demerger Index than those with manual ($p < 0.001$) and service occupations ($p < 0.05$), but that those with manual and service occupations did not differ. The occupation by style interaction demonstrates that the wordlist had a higher MI Demerger Index than the passage for those with manual ($p < 0.0001$) and service occupations ($p < 0.01$), but not for professional occupations ($p = 0.50$) (Figure 6).

In order to assess the relationship between the COG and MI Demerger Indexes, a Pearson product-moment correlation coefficient was computed. The

TABLE 7. Summary of mixed effects linear regression for MI Demerger Index, speaker as a random factor; n = 158 (R²m: 0.440, R²c: 0.859). EMM = estimated marginal means

Predictor	EMM	Estimate	SE	t-value	n	p-value
(Intercept)	--	7.3	1.2	5.9	--	***
Gender (Ref = Men)	4.0	--	--	--	79	--
Women	6.5	2.4	0.7	3.7	79	***
Age	--	-0.06	0.02	-3.3	158	**
Occupation (Ref = Manual)	3.6	--	--	--	36	--
Professional	7.02	2.4	0.9	2.7	74	**
Service	5.09	1.05	1.0	1.1	48	0.28
Origin (Ref = Huelva)	6.3	--	--	--	80	--
Lepe	4.2	-2.06	0.6	-3.2	78	**
Style (Ref = List)	5.9	--	--	--	80	--
Passage	4.6	-2.3	0.5	-4.4	78	***
Style:Occup. (Ref = List:Manual)	4.7	--	--	--	19	--
Passage:Professional	6.9	2.1	0.6	3.3	37	**
Passage:Service	4.4	1.0	0.7	1.4	24	0.16

Note: * = p < 0.05, ** = p < 0.01, *** = p < 0.001

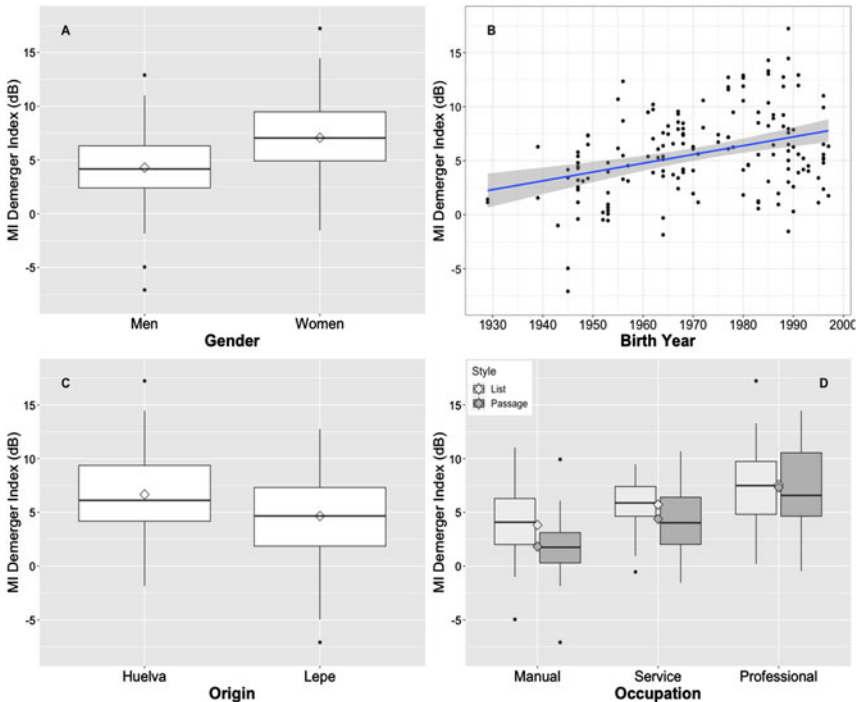


FIGURE 6: Main effect of gender (a), main effect of age (1929 = 86, 1997 = 18) (b), main effect of origin (c), and style by occupation interaction (d) for MI Demerger Index (dB).

two measures are moderately correlated ($n = 158$, $df = 156$, $r = 0.45$, $R^2 = 0.203$, $p < 0.001$). A scatterplot summarizes the results (Figure 7). For a reference point, the absolute point of merger is 0,0, meaning there is no difference between an individual's mean $\langle s \rangle$ and $\langle z,ci,ce \rangle$ realizations for COG or MI. Positive numbers indicate that an individual's mean $\langle s \rangle$ realization is higher than their mean $\langle z,ci,ce \rangle$ for either COG or MI (the expected direction of a split following the acoustic properties of [ʒ] and [θ]). Negative numbers indicate that an individual's mean $\langle s \rangle$ realization is lower than their mean $\langle z,ci,ce \rangle$ for either COG or MI, indicating a potential flip-flop (Di Paolo, 1992; Hall-Lew, 2013; Labov et. al., 1972; Labov et al., 1991). The moderate correlation suggests that increases in the COG Demerger Index are correlated with increases in the MI Demerger Index. However, there are several speakers who are close to a zero on the COG Demerger Index but have a positive score on the MI Demerger Index, indicating that perhaps MI is a more acquirable acoustic parameter.

DISCUSSION

RQ1: Complete vs. near-merger

The finding that several speakers did not demonstrate a significant difference across several or any acoustic measures between orthographic environments for one or both tasks suggests that *ceceo* is a complete merger as reported by dialectologists and historical linguists. This does not, however, preclude the existence of speakers with a near-merger. There are several speakers that demonstrate subtle, but statistically significant, differences in one or more

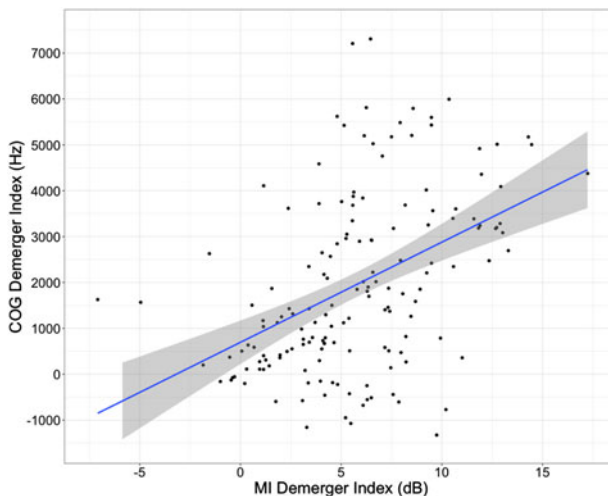


FIGURE 7. Scatterplot of COG Demerger Index (Hz) and MI Demerger Index (dB) correlation.

acoustic measures. This could be true of the first generation of speakers to separate the phonemes; that is, the near-merger could be the first step in the split of a complete merger. It seems unlikely that speakers would have maintained some subtle difference since the seventeenth century, as there would have been little dialect contact and high illiteracy rates until the twentieth century.

RQ2: Demerger

The hypothesis that there is a split of *ceceo* into *distinción* is supported by the findings. However, given it is read speech, similar to Lasarte Cervantes (2010), the study can only speak to phonetic abilities as opposed to underlying phonological representation. The orthography results demonstrate that residents of Huelva and Lepe produce significant acoustic differences between word sets with <s> and <z,ci,ce>, contrasting dialectology accounts of Huelva and Lepe as predominantly *ceceante* (Alvar et al., 1973; Mendoza Abreu, 1985; Navarro Tomás et al., 1933).

RQ3: Factors leading to demerger

The results supported previous findings for orthography (García-Amaya, 2008; Regan, 2017a; Villena & Requena, 1996) and assimilation (Moya Corral & García Wiedemann, 1995; Regan, 2017a; Santana, 2016, 2016–2017; Villena, 2007). The results demonstrate that words with an additional *same* grapheme have the largest phonetic separation between phonemes, followed by *no* additional fricative, and then an additional *different* grapheme. These findings expand on Moya Corral and García Wiedemann's (1995) distinction between "simple" and "double" environment by demonstrating that there are also differences within the double environment in which the presence of a *different* grapheme in a word can trigger an assimilation effect. Finally, it was found that tonic fricatives had a larger difference in intensity between phonemes than atonic fricatives.

The hypotheses regarding gender, age, education, occupation, and style were supported. The leaders of demerger are woman, younger speakers, those with secondary or university education, those employed in service or professional occupations, those from Huelva, and in more formal styles. Thus, this demerger is a socially motivated change from above (Labov, 1994:78). The gender results support previous work of Andalusian coronal fricatives in which women favor *distinción* more than men (García-Amaya, 2008; Melguizo Moreno, 2007; Moya Corral & García Wiedemann, 1995; Regan, 2017a; Santana, 2016–2017; Villena, 1996; *inter alia*). This finding supports Principle 3 of the *Gender Pattern*: "In linguistic change from above, women adopt prestige forms at a higher rate than men" (Labov, 1990:213; 2001:274). This is not to say that each group behaves monolithically. As Eckert (1989:253) noted, gender does not have a uniform effect, but interacts with other social factors.

The age results demonstrate an apparent time change from *ceceo* to *distinción*, supporting Villena's (2001) and Morillo-Velarde's (2001) claims that the demerger

of *ceceo* began in the 1950s. Younger speakers are producing larger acoustic differences between orthographic environments than older generations. This is unmistakably related to education, as younger generations have higher educational attainment than older generations. However, the age by gender interaction indicates that younger women have an even larger separation of phonemes than younger men.

The education results support previous studies in which those with more education favor *distinción* (Ávila, 1994; García-Amaya, 2008; Melguizo Moreno, 2007; Moya Corral & García Wiedemann, 1995; Regan, 2017a; Santana, 2016–2017; Villena, 1996; *inter alia*). Those with secondary and university education demonstrate a larger phonetic difference between orthographic environments than those with primary education. This is due to the fact that Andalusian educational settings teach *distinción*. It appears to be a case where there has been an educational campaign (Labov, 1994:343) to promote a split.

The occupation results exhibit the importance of the linguistic market (Bourdieu, 1991; Bourdieu & Boltanski, 1975; Sankoff & Laberge, 1978). Those with professional or service-oriented occupations demonstrate a significantly larger phonetic separation of phonemes than do those with manual occupations. As *distinción* has more linguistic capital,¹² speakers in professional environments are both exposed to and expected to use more *distinción*. The interaction of style and occupation in the Demerger Indexes indicates that those with manual and service-oriented occupations increase phonetic differences between phonemes in more formal styles. Although those with professional occupations demonstrated the largest overall Demerger Indexes, they exhibited no difference between styles, indicating that this change is advanced for these speakers.

RQ4: Rural-urban differences

The findings suggest that, as speech communities, Huelva produces a larger phonetic difference between orthographic environments than Lepe, supporting previous findings comparing rural and urban Andalusian communities (Lasarte Cervantes, 2010, 2012; Melguizo Moreno, 2007, 2009). This is not to say that each community behaves monolithically, but rather the demerger is more advanced in Huelva. In this sense, urban Huelva is significantly different from rural Lepe. However, in line with Britain's (2009, 2010, 2012) rejection of the rural-urban dichotomy, it is proposed that Huelva is different than Lepe in the *rate/stage* of linguistic change, but not necessarily in the *process* of linguistic change. While large-scale societal changes have affected both communities, it is the specific histories of each community (i.e., earlier dialect contact in Huelva) that have led to this difference in rate of change.

RQ5: Acoustic profiles

The results suggest that *ceceo* [s⁰] is an intermediate realization between alveolar [s] and interdental [θ] in MI, COG, and skewness, while similar in

variance to [θ]. The MI results support Lasarte Cervantes' (2010:489) addition of *ceceo* to Martínez Celdrán and Fernández Planas' (2007:107) intensity continuum. Similarly, the results suggest a COG continuum in which [s̺⁰] is between [s̺] and [θ]. Although these two continuums work in tandem, Figure 7 indicates that demerging speakers are better able to acquire the parameter of MI to separate the phonemes. From an articulatory standpoint, this may indicate that it is more difficult to acquire a change in place of articulation as reflected by COG and, instead, are relying on an amplitudinal parameter. That is, perhaps MI is an easier parameter to acquire as an adult. Although read-speech may be a limitation for sociolinguistic claims, it serves as an advantage for a preliminary description of the acoustic profiles of *ceceo* and *distinción*. Thus, COG, MI, skewness, and variance appear to be meaningful acoustic parameters for Andalusian coronal fricatives but not spectral peak, kurtosis, or duration.

Sociolinguistic theory of mergers/splits

Labov (1994:343, 348; 2010:121) acknowledges that dialect contact and education may allow individuals to reverse a merger with the appropriate context but that a community-wide split is unlikely. In the current case, the original innovation was during the fourteenth through seventeenth centuries in which dialect contact led to the merger of four medieval sibilants into dental /s̺/ in Andalusian Spanish, phonetically realized as *ceceo* or *seseo*. However, in Castilian Spanish, these four medieval sibilants merged into two phonemes; apicoalveolar /s̺/ and interdental /θ/ (Penny, 2000, 2002). The modern-day contact of Castilian speakers with Andalusian speakers, perhaps beginning in the 1960s in Huelva with the arrival of speakers with *distinción* from other regions to work in the industrial plants, allowed for dialect contact and subsequent split of the centuries-old merger. This timeline also co-occurs with the arrival of television broadcasting in 1956, increasing exposure to *distinción*. Thus, dialect contact likely was the catalyst for the split of *ceceo*. If Garde's Principle (1961:38–9) is taken to mean that, in the absence of dialect contact, a merger will not split, then the results have little to say about Garde's Principle. If, however, Garde's Principle is interpreted to mean that splits are impossible no matter the context, the current study provides phonetic support for previous claims that the demerger of *ceceo* is an exception to Garde's Principle (Moya Corral & Sosiński, 2015:35; Regan, 2017a:152, 2017b:259; Villena, 2001:126; Villena & Vida Castro, 2012:117–18).

Supporting Maguire et al.'s (2013:234) claim, the current study also provides an example that Herzog's Principle (Herzog, 1965; Labov, 1994:313) may be "compromised" when a merger becomes stigmatized. That is, a distinction is expanding at the expense of a merger due to social stigmatization as a result of dialect contact. In fact, if we connect previous studies of the demerger of *ceceo* (and of *seseo*) throughout Andalusia to the current results, the split of *ceceo* into *distinción* is not only one of the largest

phonological changes occurring in the Spanish-speaking world, but also perhaps one of the largest demergers in recorded linguistics. Thus, while there is ample support for Garde's and Herzog's Principles, in light of the current results in connection with recent studies it appears that both principles represent overarching tendencies, but that adequate dialect contact and social contexts allow for exceptions.

Societal change and dialect contact

The results support the overwhelming trend found in European social dialectology in which large-scale societal changes have increased dialect contact, leading to the levelling^{13,14} of local traditional dialectal features in favor of regional or national features (Auer & Hinskens, 1996; Hinskens et al., 2005). Societal changes appear to have first affected Huelva, beginning in the 1960s with the industrial plants, which brought speakers with *distinción* from other regions. However, both communities have shifted toward more service-based and professionally oriented occupations where *distinción* receives more linguistic capital and have seen a dramatic increase in educational attainment. As *distinción* is a direct grapheme-to-phoneme prescriptive correspondence taught in schools, this is a principle mechanism of the change.

The current results and other recent findings (García-Amaya, 2008; Gylfadottir, 2018; Regan, 2017a; Santana, 2016, 2016–2017) indicate that parts of Western Andalusia, particularly among highly educated younger speakers, favor *distinción*, similar to Eastern Andalusia. An increase in sociolinguistic salience of *ceceo* due to societal changes likely prompted this dialect levelling. As noted in situations of dialect contact, salience can promote levelling (Erker, 2017; Kerswill & Trudgill, 2005; Trudgill, 1986).

CONCLUSION

This study has provided the first large-scale acoustic analysis of Andalusian coronal fricatives, supporting previous claims that the *ceceo* merger is splitting into *distinción*. The findings demonstrate that societal changes in Huelva and Lepe have provided the adequate social context to promote the split of a merger. This change from above demonstrates the importance of societal change in sound change, even if it runs contrary to natural language tendencies. While the study analyzed phonetic abilities with read speech, future work will examine underlying phonological representations with spontaneous speech. In conclusion, the split of *ceceo* into *distinción* demonstrates a socially motivated, community-wide demerger, providing further evidence to a growing body of literature that the split of a merger is possible given the adequate social context and dialect contact.

SUPPLEMENTARY MATERIAL

To view supplementary material for this article, please visit <https://doi.org/10.1017/S0954394520000113>

ACKNOWLEDGMENTS

I am greatly indebted to Jacqueline Toribio, Barbara Bullock, Malcah Yaeger-Dror, Rajka Smiljanic, Dale Koike, Danny Erker, and Sergio Romero for instrumental feedback, to Sally Ragsdale for statistical guidance, to four anonymous reviewers for their invaluable input, and to audiences at NWAV 45, HLS 2016, and ICLAVE-9. I am truly grateful to the *buena gente* of Huelva and Lepe who were so gracious to share their time and stories with me. This investigation was funded by a NSF DDRI Award (BCS-1528551). All errors remain my own.

NOTES

1. Labov cited individuals who acquired the /ʌ/~u/ distinction associated with Received Pronunciation at school (Sankoff, 2004; Wyld, 1936). Labov (2010:121) acknowledged that an individual may acquire the split but not “an entire speech community.”
2. See also experimental studies of incomplete neutralization of obstruent-final devoicing in Polish, German, Catalan, and Russian (see Regan [2017b:11] for detailed citations).
3. A near-merger occurs when speakers produce subtle acoustic differences between two phonemes but are unable to perceive differences (Labov et al., 1972).
4. The split of *seseo* (and *ceceo*) in Granada, Spain is due to a similar influx of migrant speakers with *distinción* (Moya Corral, 2000; Moya Corral & García-Wiedemann, 1995).
5. I adopt [s^θ] as it is considered an allophone of /s/ from a diachronic perspective (Penny, 2000:118). [s^θ] denotes an intermediate phonetic realization (not dynamic changes).
6. Print 1580, Map 1705.
7. Harjus (2018) indicated that *ceceo* is being maintained in Jerez.
8. INE (1950, 1960, 2011) census information percentages reflect the number of people from each subcategory divided by the total number of speakers with available data.
9. F2 vowel onset distinguishes interdental and (apico)alveolar fricatives in English (Jongman et al., 2000) but not in Spanish (Martínez Celdrán & Fernández Planas, 2007).
10. Fox and Nissen (2005) and Nissen and Fox (2005) found /θ/ had greater negative skewness than /s/.
11. The regressions use age, but data visualization uses birth year to better observe the apparent time change. While the regression with birth year instead of age yielded the same R² values, birth year disproportionally skews the estimates as the model assumes that 0–1997 are valid points as opposed to 0–86.
12. While *ceceo* is overtly devalued, it enjoys covert prestige (Trudgill, 1972) and serves as a mark of identity (LePage & Tabouret-Keller, 1985) for certain speakers.
13. Kerswill (2003) used the terminology “regional dialect levelling.” The findings support Kerswill’s claim that consonants are “torchbearers of geographic diffusion” (2003:231).
14. Villena and Vida Castro (2012:67–8) noted that, while dialect levelling normally leads to simplification, this case presents a more complicated result: an additional phoneme.

REFERENCES

- Alvar, Manuel, Llorente, Antonio, Salvador, Gregorio, & Mondéjar, José. (1973). *Atlas Lingüístico y Emográfico de Andalucía (ALEA)*. VI. Granada.
- Auer, Peter & Hinskens, Frans. (1996). The convergence and divergence of dialects in Europe. New and not so new developments in an old area. *Sociolinguistica* 10:1–30.
- Ávila, Antonio M. (1994). Variación reticular e individual de s/z en el Vernáculo Urbano Malagueño: Datos del barrio de Capuchinos. *Analecta Malacitana* 17:343–67.

- Bates, Douglas, Mächler, Martin, Bolker, Ben, & Walker, Steve. (2015). Fitting linear mixed-effects models using lme4. *Journal of Statistical Software* 67(1):1–48.
- Behrens, Susan, & Blumstein, Sheila E. (1988a). Acoustic characteristics of English voiceless fricatives: A descriptive analysis. *Journal of Phonetics* 16:295–98.
- . (1988b). On the role of the amplitude of the fricative noise in the perception of place of articulation in voiceless fricative consonants. *J. Acoust. Soc. Am.* 84:861–7.
- Boersma, Paul, & Weenink, David. (2017). Praat: A system for doing phonetics by computer. (version 6.0.04) [computer program]. <<http://www.praat.org>>.
- Bourdieu, Pierre. (1991). *Language and Symbolic Power*. Cambridge, MA: Harvard UP.
- Bourdieu, Pierre, & Boltanski, Luc. (1975). Le fétichisme de la langue. *Actes de la recherche en sciences sociales* 4:2–32.
- Britain, David. (2009). “Big Bright Lights” versus “Green and Pleasant Land”? The Unhelpful Dichotomy of Urban versus Rural in Dialectology. In E. Al-Wer (Ed.), *Arabic Dialectology*. Boston: BRILL. 223–47.
- . (2010). Language and space: The variationist approach. In P. Auer & J.E. Schmidt (Eds.), *Language and Space*. Leiden: De Gruyter. 142–62.
- . (2012). Countering the urbanist agenda in variationist sociolinguistics: dialect contact, demographic change and the rural-urban dichotomy. In S. Hansen, C. Schwarz, P. Stoeckle, & T. Streck (Eds.), *Dialectological and Folk Dialectological Concepts of Space*. Berlin: de Gruyter. 12–30.
- Bullock, Barbara E., & Nichols, Jenna. (2017). Return to Frenchville: Tracing a near-merger from legacy data. In S. Perpiñán, D. Heap, I. Moreno-Villamar & A. Soto-Corominas (Eds.), *RLLT 11*. Amsterdam: Jon Benjamins. 229–46.
- Carbonero, Pedro. (1982). Norma estándar y actitud sociolingüística. In V. Lamíquiz & P. Carbonero (Eds.), *Sociolingüística Andaluza I*. Universidad de Sevilla. 141–50.
- . (1985). Aspectos sociolingüísticos sobre la nivelación en el español meridional. *Revista de Filología Románica* vol. III: 77–83.
- Carbonero, Pedro, Álvarez, José Luis, Casas, Joaquín, & Gutiérrez, Isabel María. (1992). *El habla de Jerez: Estudio sociolingüístico*. Jerez: Ayuntamiento.
- Dalbor, John B. (1980). Observations on Present-Day Seseo and Ceceo in Southern Spain. *Hispania* 63:5–19.
- de las Heras, Jerónimo, Bardallo, María Dolores, Castrillo, Carmen, Gallego, Juan, Padilla, José María, Romero, José, Torrejón, Valentín, & Vacas, Carmen. (1996). Perfil sociolingüístico del habla culta de la zona periurbana de Huelva. *Aestuaría. Revista de Investigación* 4:109–24.
- Di Paolo, Marianna. (1992). Hypercorrection in response to the apparent merger of (oh) and (a) in Utah English. *Language and Communication* 12:267–92.
- Di Paolo, Marianna, & Faber, Alice. (1990). Phonation differences and the phonetic content of the tense-lax contrast in Utah English. *Language Variation and Change* 2(2):155–204.
- Eckert, Penelope. (1989). The whole woman: Sex and gender differences in variation. *Language variation and change* 1:245–67.
- Elvira-García, Wendy. (2014). *Zero-crossing-and-spectral-moments*, v.1.3. [Praat scripts]. <<http://stel.uh.edu/labfon/sites/default/files/zero-crossing-and-spectral-moments13.praat>>.
- Erker, Daniel. (2010). A subsegmental approach to coda /s/ weakening in Dominican Spanish. *International Journal of the Sociology of Language* 203:9–26.
- . (2017). The limits of named language varieties and role of social salience in dialectal contact. *Language and Linguistic Compass* 11(1):1–20.
- Faber, Alice & Di Paolo, Marianna. (1995). The discriminability of nearly merged sounds. *Language Variation and Change* 7:35–78.
- Feria Toribio, José María. (1994). Cambios recientes del poblamiento en la provincia de Huelva. *Huelva en su Historia* 5:187–99.
- File-Muriel, Richard, & Brown, Earl K. (2011). The gradient nature of s-lenition in Caleño Spanish. *Language Variation and Change* 23(2):223–43.
- Flipsen, Peter Jr., Shriberg, Lawrence, Weismer, Gary, Karlsson, Heather, & McSweeney, Jane. (1999). Acoustic characteristics of /s/ in Adolescents. *Journal of Speech, Language and Hearing Research* 42:663–77.
- Forrest, Karen, Weismer, Gary, Milenkovic, Paul, & Dougall, Ronald N. (1988). Statistical analysis of word-initial voiceless obstruents: Preliminary data. *J. Acoust. Soc. Am.* 84:115–23.
- Fox, Robert A. & Nissen, Shawn L. (2005). Sex-Related Acoustic Changes in Voiceless English Fricatives. *Journal of Speech, Language, and Hearing Research* 48:753–65.

- García-Amaya, Lorenzo J. (2008). Variable norms in the production of /θ/ in Jerez de la Frontera, Spain. In J. F. Siegel, T. C. Nagle, A. Lorente-Lapole, & J. Auger (Eds.) *IUWPL7: Gender in Language*, Bloomington, IN: IULC Publications. 49–71.
- Garde, Paul. (1961). Réflexions sur les différences phonétiques entre les langues slaves. *Word* 17:34–62.
- Gordon, Matthew J. (2013). Investigating Chain Shifts and Mergers. In J. K. Chambers & N. Schilling (Eds.), *The Handbook of Language Variation and Change*, 2nd Edition, Somerset: Wiley. 203–19.
- _____. (2015). Exploring Chain Shifts, Mergers, and Near-Mergers as Changes in Progress. In P. Honeybone & J. Salmons (Eds.), *The Oxford Handbook of Historical Phonology*. Oxford: Oxford University Press. 173–91.
- Gylfadottir, Duna. (2018). *The effective borrowing of a phonemic contrast*. Doctoral dissertation, University of Pennsylvania.
- Haley, Katarina L., Seelinger, Elizabeth, Callahan Mandulak, Kerry, & Zajac, David J. (2010). Evaluating the spectral distinction between sibilant fricatives through a speaker-centered approach. *Journal of Phonetics* 38:548–54.
- Hall-Lew, Lauren. (2013). ‘Flip-flop’ and mergers-in-progress. *English Language and Linguistics* 17 (2):359–90.
- Harjus, Jannis. (2018). *Sociofonética andaluza y lingüística perceptiva de la variación: el español hablado en Jerez de la Frontera*. Madrid: Iberoamericana Vervuert.
- Hernández-Campoy, Juan Manuel, & Villena Ponsoda, Juan Andrés (2009). Standardness and nonstandardness in Spain. *International Journal of the Sociology of Language*. 196–7:181–214.
- Herzog, Marvin I. (1965). *The Yiddish Language in Northern Poland*. Bloomington and The Hague [IJAL 21.2, part 2].
- Hickey, Raymond. (2004). Mergers, near-mergers and phonological interpretation. In C. J. Kay, & I. Wotherspoon (Eds.), *New Perspectives on English Historical Linguistics*. Amsterdam: John Benjamins. 125–37.
- Hinskens, Frans, Auer, Peter, & Kerswill, Paul. (2005). The study of dialect convergence and divergence: conceptual and methodological considerations. In P. Auer, F. Hinskens, & P. Kerswill (Eds.), *Dialect Change: Convergence and Divergence in European Languages*. Cambridge: Cambridge University Press. 1–48.
- Hualde, José I. (2005). *The sounds of Spanish*. Cambridge: Cambridge UP.
- IECA: Instituto de Estadística y Cartografía de Andalucía. Junta de Andalucía. [website] (2016). <<http://www.juntadeandalucia.es/institutodeestadisticaycartografia/>>
- INE: Instituto Nacional de Estadística ‘National Institute of Statistics.’ [website]. (2011). Madrid: INE. <http://www.ine.es/censos2011_datos/cen11_datos_enlaces.htm>
- Jesus, Luis M. T., & Shadle, Christine H. (2002). A parametric study of the spectral characteristics of European Portuguese fricatives. *Journal of Phonetics* 30:437–64.
- Johnson, Daniel Ezra. (2010). *Stability and Change along a Dialect Boundary: The Low Vowels of Southeastern New England*. Publication of American Dialect Society 95.
- Jongman, Allard, Wayland, Ratree, & Wong, Serena. (2000). Acoustic characteristics of English fricatives. *J. Acoust. Soc. Am.* 108(3):1252–63.
- Kerswill, Paul. (2003). Dialect levelling and geographical diffusion in British English. In D. Britain & J. Cheshire (Eds.), *Social dialectology: In honour of P. Trudgill*. Amsterdam: John Benjamins. 223–43.
- Kerswill, Paul, & Trudgill, Peter. (2005). The birth of new dialects. In P. Auer, F. Hinskens, & P. Kerswill (Eds.), *Dialect Change*. Cambridge UP. 196–220.
- Koenig, Laura K., Shadle, Christine H., Preston, Jonathan L., & Mooshammer, Christine R. (2013). Toward Improved Spectral Measures of /s/: Results from Adolescents. *Journal of Speech, Language, and Hearing Research* 56:1175–89.
- Kuznetsova, A., Brockhoff, P.B., & Christensen, R.H. (2014). *LmerTest: Tests for random and fixed effects for linear mixed effects models*. (lmer objects of lme4).
- Labov, William. (1972). *Sociolinguistic patterns*. Philadelphia: University of Pennsylvania Press.
- _____. (1975). On the use of the present to explain the past. In L. Heilmann (Ed.), *Proceed. of 11th Intern. Congress of Linguists*. Bologna: Il Mulino. 825–51.
- _____. (1990). The intersection of sex and social class in the course of linguistic change. *Language Variation and Change* 2:205–54.
- _____. (1994). *Principles of Linguistic Change, vol. 1: Internal Factors*. Malden, MA: Blackwell.
- _____. (2001). *Principles of Linguistic Change, vol. 2: Social Factors*. New York: Blackwell.
- _____. (2010). *Principles of Linguistic Change, vol. 3: Cognitive and Cultural Factors*. Oxford: Wiley-Blackwell.

- Labov, William, Ash, Sharon, & Boberg, Charles. (2006). *Atlas of North American English*. Berlin: Gruyter.
- Labov, William, Karen, Mark, & Miller, Corey. (1991). Near-mergers and the suspension of phonemic contrast. *Language Variation and Change* 3:33–74.
- Labov, William, Yaeger, Malcah, & Steiner, Richard. (1972). *A quantitative study of sound change in progress: Report on National Science Foundation Contract GS-3287*. Philadelphia: US Regional Survey.
- Ladefoged, Peter. (2003). *Phonetic Data Analysis: An Introduction to Fieldwork and Instrumental Techniques*. Malden, MA: Blackwell.
- Lamíquiz, Vidal, & Carbonero, Pedro. (1987). *Perfil sociolingüístico del sevillano culto*. Sevilla: Instituto de Desarrollo Regional (Universidad de Sevilla).
- Lasarte Cervantes, M. C. (2010). Datos para la fundamentación empírica de la escisión fonemática prestigiosa de /θ^s/ en Andalucía. *Nueva Revista de Filología Hispánica* 58(2):483–516.
- (2012). Variación social en la percepción del contraste meridional entre /s/ y /θ/ en Málaga. In J. A. Villena-Ponsoda & A. Ávila-Muñoz (eds.), *Estudios sobre el español de Málaga*. Málaga: Sarriá. 167–190.
- Lenth, Russell, Singmann, Henrik, Love, Jonathan, Buerkner, Paul, & Herve, Maxime. (2018). *Emmeans: Estimated marginal means, aka least-squares means*. <https://cran.r-project.org/web/packages/emmeans/emmeans.pdf>
- Le Page, Robert, & Tabouret-Keller, Andrée. (1985). *Acts of Identity*. Cambridge University Press.
- Maguire, Warren. (2008). *What is a merger, and can it be reversed? The origin, status and reversal of the 'nurse-north' merger in Tyneside English*. Doctoral dissertation, University of Newcastle upon Tyne.
- Maguire, Warren, Clark, Lynn, & Watson, Kevin. (2013). Introduction: what are mergers and can they be reversed? *English Language and Linguistics* 17(2):229–39.
- Maniwa, Kazumi, Jongman, Allard, & Wade, Travis. (2009). Acoustic characteristics of clearly spoken English fricatives. *J. Acoust. Soc. Am.* 125(6):3962–73.
- Martínez, María D. & Moya Corral, Juan A. (2000). Reacciones actitudinales hacia la variación dialectal en hablantes granadinos. *Lingüística Española Actual* 22(2):137–60.
- Martínez Celdrán, Eugenio, & Fernández Planas, Ana María. (2007). *Manual de fonética española: Articulaciones y sonidos del español*. Barcelona: Ariel.
- Martínez Chacón, Alfonso. (1992). La ciudad de Huelva: Evolución, estructura y problemática actual. *Huelva en su Historia* 4:305–22.
- Mattheier, Klaus. (Ed.) (2000). *Dialect and migration in a changing Europe*. Frankfurt: Lang.
- Melguizo Moreno, Elisabeth. (2007). La variación de /θ^s/: Estudio comparativo de dos muestras de población de Granada. *ELUA* 21(1):1–16.
- (2009). Estudio sociolingüístico del ceceo en dos comunidades de habla. *Analecta Malacitana* 27:165–84.
- Mendoza Abreu, Josefa M. (1985). *Contribución al estudio del habla rural y marinera de Lepe (Huelva)*. Huelva: Diputación Provincial de Huelva.
- Milroy, Lesley. (1980). *Language and social networks*. Oxford: Blackwell.
- Morillo-Velarde, Ramón. (1997). Seseo, ceceo y seceo: problemas metodológicos. In A. Narbona & M. Ropero (Eds.), *El habla andaluza*. Universidad de Sevilla. 201–21.
- (2001) Sociolingüística en el ALEA: variable generacional y cambio lingüístico. *Estudios de Lingüística* 15:1–87.
- Moya Corral, Juan Antonio. (2000). Migration et changement linguistique à Grenade. In K. Mattheier (Ed.), *Dialect and migration in a changing Europe*. Frankfurt: Lang. 25–41.
- Moya Corral, Juan Antonio, & García Wiedemann, Emilio José. (1995). *El habla de Granada y sus barrios*. Granada: Universidad de Granada.
- Moya Corral, Juan Antonio, & Sosiński, Marcin. (2015). La inserción social del cambio. La distinción s/θ en Granada. Análisis en tiempo aparente y en tiempo real. *Lingüística Española Actual* 37(1):33–72.
- Nakagawa, Shinichi, & Schielzeth, Holger. (2013). A general and simple method for obtaining R² from generalized linear mixed-effects models. *Methods in Ecology and Evolution/British Ecological Society* 4:133–42.
- Narbona, Antonio, Cano, Rafael, & Morillo, Ramón. (1998). *El español hablado en Andalucía*. Barcelona: Ariel.
- Navarro Tomás, Tomás, Espinosa, A.M., & Rodríguez-Castellano, L. (1933). La frontera del andaluz. *Revista de Filología Española* 20:225–77.
- Nissen, Shawn L., & Fox, Robert A. (2005). Acoustic and spectral characteristics of young children's fricative productions: A developmental perspective. *J. Acoust. Soc. Am.* 118(4):2570–8.

- Nunberg, G. (1980). A falsely reported merger in eighteenth century English. In W. Labov (Ed.), *Locating language in time and space*. New York: Academic. 221–50.
- Nycz, Jennifer. (2011). *Second Dialect Acquisition: Implications for Theories of Phonological Representation*. Doctoral dissertation, New York University.
- _____. (2013). New contrast acquisition: methodological issues and theoretical implications. *English Language and Linguistics* 17(2):325–57.
- Palacio, M. (2001). *Historia de la televisión en España*. Barcelona: Editorial Gedisa.
- Penny, Ralph. (2000). *Variation and Change in Spanish*. Cambridge: Cambridge University Press.
- _____. (2002). *Gramática histórica del español*. Barcelona: Ariel.
- R Core Team. (2017). *R: A language and environment for statistical computing*. Vienna: R Foundation for Statistical Computing. <www.R-project.org>. Software program.
- Regan, Brendan. (2015). The demerger of *ceceo* through the urbanization of Andalucía. Paper presented at the 89th LSA Annual Meeting, Portland, Oregon, January 2015.
- _____. (2017a). A study of *ceceo* variation in Western Andalusia (Huelva). *Studies in Hispanic and Lusophone Linguistics* 10(1):119–60.
- _____. (2017b). *The Effect of Dialect Contact and Social Identity on Fricative Demerger*. Doctoral dissertation, The University of Texas at Austin.
- Rueda, J.C. & Chicarro, M. (2006). *La televisión en España*. Madrid: Fragua.
- Ruiz García, Marta. (2001). La inmigración industrial en Huelva: Procesos de integración de los trabajos del polo industrial. *Trabajo* 10:159–77.
- Salvador, Francisco. (1980). Niveles sociolingüísticos de seseo, ceceo y distinción en la ciudad de Granada. *Español Actual* 37–38:25–32.
- Sankoff, Gillian. (2004). Adolescents, young adults and the critical period: Two case studies from “Seven Up.” In C. Fought (Ed.), *Sociolinguistic Variation: Critical Reflections*. Oxford: Oxford University Press. 121–39.
- Sankoff, D. & Laberge, S. (1978). The linguistic market and the statistical explanation of variability. In D. Sankoff (Ed.), *Linguistic variation*. NY: Academic Press. 239–50.
- Santana Marrero, Juana. (2016–2017). Factores externos e internos influyentes en la variación de /θ/ en la ciudad de Sevilla. *Analecta Malacitana* XXXIX:143–77.
- _____. (2016). Seseo, ceceo y distinción en el sociolecto alto de la ciudad de Sevilla. *Boletín de Filología de la Universidad de Chile* 51(2):255–80.
- Sawoff, Adolf. (1980). A sociolinguistic appraisal of the sibilant pronunciation in the city of Seville. *Festgabe für Norman Denison. Grazer Linguistische Studien*. 11–12.
- Shadle, Christine. (2012). On the acoustics and aerodynamics of fricatives. In Cohn, Fougeron, & Huffman (Eds.), *Oxford Handbook of Lab. Phon.* Oxford University Press. 511–26.
- Shadle, Christine H., & Mair, Sheila J. (1996). Quantifying spectral characteristics of fricatives. *Proceedings International Conf. on Spoken Language Processing*, Philadelphia. 1521–4.
- Stevens, K.N. (1985). Evidence for the role of acoustic boundaries in the perception of speech sounds. In V. A. Fromkin (Ed.), *Phonetic Linguistics*. NY: Academic. 243–55.
- Stewart, Miranda. (1999). *The Spanish Language Today*. New York: Routledge.
- Stevens, P. (1960). Spectra of fricative noise in human speech. *Language and Speech* 3:32–49.
- Thomas, Erik. (2006). Vowel shifts and mergers. In K. Brown (Ed.), *Encyclopedia of language and linguistics*, 2nd edition. Oxford: Elsevier. 484–94.
- Trudgill, Peter. (1972). Sex, covert prestige and linguistic change in urban British English of Norwich. *Language in Society* 1(2):179–95.
- _____. (1974). *The social differentiation of English in Norwich*. Cambridge University Press.
- _____. (1986). *Dialects in Contact*. Oxford: Blackwell.
- Trudgill, Peter, Schreier, Daniel, Long, Daniel, & Williams, Jeffrey P. (2003). On the Reversibility of Mergers: /W/, /V/ and Evidence from Lesser-known Englishes. *Folia Linguistica Historica* XXIV/1–2:23–45.
- Villena Ponsoda, Juan Andrés. (1996). Convergence and divergence in a standard-dialect continuum: Networks and individuals in Málaga. *Sociolingüística* 10:112–37.
- _____. (2001). *La continuidad del cambio lingüístico. Tendencias conservadoras e innovadoras en la fonología del español*. Granada: Universidad.
- _____. (2005). How similar are people who speak alike? In P. Auer, F. Hinskens, & P. Kerswill (Eds.), *Dialect Change*. Cambridge University Press. 303–34.
- _____. (2007). Interacción de factores internos y externos en la explicación de la variación fonológica. In J. A. Moya Corral & M. Sosiński (Eds.), *Las hablas andaluzas y la enseñanza de la lengua*. Universidad de Granada. 69–97.

- . (2008). Sociolinguistic patterns of Andalusian Spanish. *International Journal of the Sociology of Language* 193/194:139–60.
- Villena Ponsoda, Juan Andrés, & Ávila Muñoz, Antonio M. (2014). Dialect stability and divergence in southern Spain. In K. Braunmüller, S. Höder, & K. Kühn (Eds.), *Stability and Divergence in Language Contact*: Amsterdam: John Benjamins. 207–37.
- Villena Ponsoda, Juan Andrés, & Requena Santos, Félix. (1996). Género, Educación y Uso Lingüístico: La variación social y reticular de S y Z en la ciudad de Málaga. *Lingüística (ALFAL)* 8:5–51.
- Villena Ponsoda, Juan Andrés, Sánchez Sáez, José María, & Ávila Muñoz, Antonio Manuel. (1995). Modelos probabilísticos multinomiales para el estudio del seseo, ceceo y distinción de /s/ y /θ/. *ELUA* 10:391–435.
- Villena Ponsoda, Juan Andrés, & Vida Castro, Matilde. (2012). La influencia del prestigio social en la reversión de los cambios fonológicos. In J. A. Villena Ponsoda & A. Ávila Muñoz (Eds.), *Estudios sobre el español de Málaga*. Málaga: Sarriá. 67–128.
- Watt, Dominic. (1998). One vowel short: The (reported) merger of nurse and north in Tyneside English. In C. Paradis, D. Vincent, D. Deshaies & M. Laforest (Eds.), *Papers in sociolinguistics: NWAVE-26*. Quebec: Editions Nota bene. 149–58.
- Wedel, Andrew, Kaplan, Abby, & Jackson, Scott. (2013). High functional load inhibits phonological contrast loss: A corpus study. *Cognition* 128:179–86.
- Wickham, Hadley. (2013). ggplot2: Elegant Graphics for Data Analysis. <ggplot2.org>.
- Wilbanks, Eric. (2015). *The Development of FASE (Forced Alignment System for Español) and implications for sociolinguistic research*. Paper presented at NWAV 44, Toronto, Canada. <https://github.com/EricWilbanks/faseAlign>.
- Wyld, Henry Cecil. (1936). *A History of Modern Colloquial English*. London: Blackwell.
- Yao, Yao, & Chang, Charles B. (2016). On the cognitive basis of contact-induced sound change: Vowel merger reversal in Shanghaiese. *Language* 92(2):433–67.