

This is a “preproof” accepted article for *Journal of Clinical and Translational Science*.

This version may be subject to change during the production process.

10.1017/cts.2025.31

Title: Greater Gulf Coast Regional Translational Workforce Development: Assessment and Action Plan

Author Names and Affiliations

Courtney D Hunt¹, Richard Suggang¹, Ming Guo², Glenn Sanford³, Dorothy E Lewis¹, Melinda Sheffield-Moore², Rebecca M Hall^{1*}

¹Houston Methodist. Houston, TX

²The University of Texas Medical Branch at Galveston. Galveston, TX

³University of Houston-Clear Lake, Houston, TX

*Corresponding Author: Rebecca Hall, 6670 Bertner Avenue, Houston, TX 77030, 713-441-7192, rmhall@houstonmethodist.org ORCID ID: <https://orcid.org/0000-0002-5460-0090>

Conflicts of Interest: The authors declare no conflicts.

This is an Open Access article, distributed under the terms of the Creative Commons Attribution-NonCommercial-NoDerivatives licence (<http://creativecommons.org/licenses/by-nc-nd/4.0/>), which permits non-commercial re-use, distribution, and reproduction in any medium, provided the original work is unaltered and is properly cited. The written permission of Cambridge University Press must be obtained for commercial re-use or in order to create a derivative work.

Abstract: 200 words

Converting knowledge from basic research into innovations that improve clinical care requires a specialized workforce that converts a laboratory invention into a product that can be developed and tested for clinical use. As the mandate to demonstrate more real-world impact from the national investment in research continues to grow, the demand for staff that specialize in product development and clinical trials continues to outpace supply. In this study, two academic medical institutions in the greater Houston-Galveston region termed this population the ‘bridge and clinical research professional’ (B+CRP) workforce and assessed its turnover before and after onset of the COVID-19 pandemic . Both institutions realized growth (1.2 vs 2.3-fold increase) in B+CRP-specific jobs from 2017-2022. Turnover increased 1.5-2-fold after onset of the pandemic but unlike turnover in the larger clinical and translational research academic workforce, the instability did not resolve by 2022. These results are a baseline measurement of the instability of our regional B+CRP workforce and have informed the development of a regional alliance of universities, academic medical centers, and economic development organizations in the greater Houston-Galveston region to increase this highly-specialized and skilled candidate pool.

Keywords: Workforce; Clinical and translational research administration; Translational science, Biomedical; COVID-19; Academic Medical Centers

INTRODUCTION

The National Institutes of Health (NIH) established the National Center for Advancing Translational Sciences (NCATS) in 2011 to realize the promise of basic science by increasing translation of knowledge into real world clinical and health impact for the American people [1]. Along the spectrum of translation, basic research in the laboratory uncovers fundamental mechanisms of biology and disease, which is further elucidated to understand a disorder and discover ways to treat it. Many steps are then needed to bridge the gap or translate basic research into clinical care, including: applied research to test, evaluate and refine new materials, devices, systems or methods into a final experimental product or process; design and conduct pilot studies of investigational drugs and device prototypes within an FDA complaint controlled environment; preclinical validation through FDA compliant good laboratory processes; and FDA approval for entry into clinical trials and/or clinical use (Figure 1) [2].

Successfully traversing this process requires specialized knowledge, resources and infrastructure that is distinct from that utilized for basic laboratory research. The network of institutions in the Clinical and Translational Science Awards (CTSA) Program have focused on skills training and process improvements to support translation. In 2016, NCATS began to address the regulatory, inter and intra-institutional administrative and operational inefficiencies in clinical trials that had to be resolved to accelerate impact [3]. The CTSA mandate from NCATS is now to advance the “Science of Translation” to accelerate the administrative and operational process of leveraging new knowledge to create real-world impact in the increasingly complex research ecosystems and systems architecture.

Recommendations for continuous improvements in preparing the next generation of independent scientists (i.e., faculty or Principal Investigator [PI] roles) have been detailed in reports from think tanks such as the National Academies of Sciences, Engineering and Medicine [4] and the Biomedical Research Workforce Working Group of the Advisory Committee to the NIH Director [5]. Institutional and individual training grants have served to raise awareness as well as prepare undergraduate, graduate, and postdoctoral trainees and residents (i.e., R25, T32, Medical Research Scholars Program) for successful research careers. In addition to developing the next generation of research scientists, it is also critical to continuously prepare non-faculty and non-trainee staff members that contribute to moving an idea from the lab to a product that

can be developed, tested and implemented in clinical use. These staff careers are essential, yet few training pathways exist and they are not well known in the workforce marketplace. The Association of Clinical Research Professionals (ACRP) supports this notion, having noted that “career paths in clinical research are not visible or accessible to the broader workforce” [6].

The NIH, through NCATS, and the National Science Foundation, through the GRANTED program [7], have more recently recognized the importance of bolstering the biomedical research-related technical, administrative and operational workforce that are essential to the practice of team science and academic medicine. In 2019, NCATS solicited public feedback on the CTSA program. NCATS then incorporated a key program goal to develop and implement training programs for clinical research professionals including “clinical researchers, research nurses, pharmacists, administrators, coordinators, consultants, data managers, quality assurance managers, regulatory affairs managers or educators in clinical trial management” [8]. Programs such as the NIH Broadening Experience in Scientific Training (BEST) Program prepare research trainees for broader biomedical research careers [9]. Similarly, the NSF GRANTED program was launched in 2023 to build research administration capacity and diversity nationwide, with training in pre/post award administration, technology transfer, industry relations, research integrity, compliance, and security at the national level [7].

Despite this progress, the clinical and translational research workforce deficit is expected to continue to grow. According to the Bureau of Labor Statistics, translational research-related fields are projected to have higher than average job growth between 2022-2032 (e.g., clinical lab technician jobs and biological technician jobs at 5% growth and medical scientists at 10% growth [10–12]). Clinical research professional job postings had an average 9.3% compound annual growth (5.33-13.47%) from 2016-2019, with clinical research coordinators, clinical trial managers, and clinical trial assistant positions having more than 10% compound annual growth [6]. This corresponds with a 43% increase in new clinical research studies on clinicaltrials.gov (27,786 new studies registered in 2016; 39,723 registered in 2023) [13]. This growth increased despite, or perhaps due to, the COVID-19 pandemic. Along with greater need for clinical research professionals due to growth in clinical trials, increased job postings [14] may also reflect health care worker burnout due to the COVID-19 pandemic [14,15]. Many job openings are likely replacements for workers transferring to different occupations or exiting the

workforce. Given the specialized knowledge and skills that are required for positions that bridge discoveries from the laboratory into products that move through the development pipeline and into clinical trials, academic medical institutions are also competing with industry to recruit and retain this workforce. Altogether, demand for clinical research staff has outpaced supply, as a SWOG Cancer Research Network Survey of oncology research professionals found that 80% of respondents cited a clinical trial personnel shortage caused by the COVID-19 pandemic [16]. This level of growth in clinical and translational research requires an influx of talent, either through new entry to the workforce or transition from other positions. Further, diversity in the clinical and translational workforce is critical, as a less diverse research staff is correlated with decreased diversity in clinical trials, exacerbating the reduced access of underserved populations to quality healthcare [17]. While national initiatives are beginning to address the nationwide workforce deficit described above, the greater Houston-Galveston region does not have a parallel regional effort despite being home to the largest academic medical center in the world.

Here, we have undertaken a baseline study of our regional clinical and translational workforce to understand challenges specific to the Houston-Galveston region to inform the design of career development that supports sustainability of the clinical and translational research workforce. In this manuscript, we focus on a subset of the translational workforce that is critical to moving a laboratory discovery through the product development pipeline and into clinical trials, which we have termed “Bridge and Clinical Research Professionals” (B+CRP). We define Bridge professionals as non-faculty staff who move an IP-protected invention through product development and regulatory strategy up to clinical trials, and Clinical Research Professionals as non-faculty staff who manage and operate clinical studies. In this study, two academic medical institutions (Houston Methodist and University of Texas Medical Branch [UTMB]) within the Houston-Galveston region partnered to examine our hypotheses that the B+CRP workforce at our institutions have higher turnover compared to the overall institutional workforce, and that in contrast to other job families this turnover had not rebounded in the years following the COVID-19 pandemic.

Materials and Methods

Per Houston Methodist Research Institute Institutional Review Board, this study was determined not to be regulated as human subjects research. No identifiable data was involved.

Institutions: The Houston Methodist system comprises an academic research institute, 8 hospitals, and a clinical trial network spanning the greater Houston metropolitan area. UTMB is a public academic medical center that predominantly serves the region spanning south from the Houston metro area to Galveston Island on the gulf coast, as well as regional clinics across the state. UTMB also houses extensive graduate and medical programs, with 3850 students in 2023. Each institution serves adjacent, but distinct patient populations within the Houston-Galveston region. Both institutions are also academic medical centers with robust clinical and translational activities, making these institutions ideal for comparing clinical and translational research workforce trends.

Defining Scope of Population: Examples of B+CRP positions include clinical research coordinators, clinical research nurses, clinical trial management and oversight staff, regulatory affairs and strategy staff, technology transfer and commercialization staff, and FDA compliant quality controlled Good Laboratory Practice and Good Manufacturing Practice manufacturing and production staff. Other research administration positions not specific to moving an invention through clinical trials such as education specialists, basic science laboratory staff and other discovery science roles, data analysts, statisticians, IRB/IACUC analysts, core facility operators, grant administrators, and non-GLP comparative medicine staff were considered out of scope. Faculty were also excluded.

Houston Methodist Data Source: Deidentified employment data for the academic enterprise was provided by institutional human resources (HR). Positions were assessed by department and job title to determine specific in-scope departments and job titles for all subsequent analysis. All job positions at Houston Methodist as of February 2023 were assessed for relevance to bridging laboratory research to clinical trials, defined as those specifically involved with research manufacturing and production, industry relations and commercialization, and clinical research.

De-identified employee headcount and termination data from 2017-2022 were mapped to in-scope and out-of-scope categories. The number of filled positions in January was considered the employee headcount for that year. Terminations included employees who voluntarily terminated employment with the institution in that calendar year. De-identified HR data included the department ID, department description, job code and job code description as well as demographic information including race and ethnicity (Asian, Black, White, Hispanic), gender

identity (male or female) and age group (Traditional, Before 1945; Baby Boomer, 1945-1964; Gen X, 1965-1979; Gen Y, 1980-1996; Gen Z, 1997+). Demographic data was collected at employee hiring by employees self-selecting from a structured list of terms determined by the HR department, with the option to re-select as needed throughout employment. *UTMB Data Source:* The UTMB workforce is divided into academic, clinical or institutional support enterprises; this study included positions within the academic enterprise. Any clinical positions within the academic enterprise contribute to both teaching and education. UTMB job titles are currently structured to be used broadly for both basic and translational research positions. To determine comparable B+CRP jobs in the academic enterprise, positions listed on UTMB institutional review board-approved research protocols within the calendar year, excluding faculty, were included. Additionally, employees working in UTMB's Sealy Institute for Drug Discovery, Sealy Institute for Vaccine Sciences clinical trials employees, and in technology transfer were included. B+CRP positions were mapped to employment and demographic data and provided de-identified to the research team. Demographic data was collected at employee hiring by employees self-selecting from a structured list of terms determined by the HR department, with the option to re-select as needed throughout employment.

Statistical Analysis: Headcount and turnover were analyzed by year for overall and B+CRP positions. Employee headcount was categorized by HR job family at each institution. Turnover was defined as the number of terminations in the year/active headcount during the year.

To assess whether turnover significantly differed between B+CRP and overall categories, chi-square tests were performed comparing the expected against the observed headcounts and terminations from 2017-2022 by year. Data prior to 2020 were defined as the pre-COVID-19 pandemic period. The same approach examined subpopulations defined by gender, racial and ethnic grouping, and age groups, in case these factors could be linked to changes in turnover.

Results

Given the broad, non-standardized terminology for describing the clinical and translational research workforce, we compared the structural makeup of the academic enterprise of the two academic medical centers (Figure 2). UTMB has an overall larger headcount than Houston Methodist (3807 UTMB versus 1570 Houston Methodist), but the academic workforce at both institutions contained similar job families in support of the academic mission (as distinct from

corporate operations and purely clinical services, insofar as such functions could be separated in such systems). The overall similarities of the academic enterprises allowed for further characterization and comparison of workforce trends between institutions.

The change in overall and B+CRP headcount was determined for each institution (Figure 3). Houston Methodist overall academic workforce experienced steady growth from 2017-2022, with overall headcount increasing 1.5-fold from 679 in 2017 to 1032 in 2022. Houston Methodist B+CRP workforce also experienced a 2.3-fold increase from 2017-2022 (84 in 2017 to 191 in 2022). The Houston Methodist B+CRP workforce represented 12.4% (2017) to 18.5% (2022) of the Houston Methodist academic enterprise, averaging 13.0% pre-pandemic (2017-2019) vs 16.6% during-pandemic (2020-2022).

The UTMB overall workforce remained stable, with an overall headcount of 3654 in 2017 increasing to 3807 in 2022, whereas UTMB B+CRP workforce experienced a 1.2-fold increase from 2017-2022 (289 in 2017 vs 338 in 2022). UTMB B+CRP workforce represented 7.9% (2017) to 8.9% (2022) of the academic enterprise workforce (pre-pandemic average: 9% vs during-pandemic average: 9.7%).

To test the hypothesis that the B+CRP workforce at our institutions experienced higher turnover compared to the overall academic workforce, turnover rate for overall academic and B+CRP workforces were compared at each institution (Figure 4). Pre-pandemic Houston Methodist B+CRP workforce turnover was statistically higher than overall academic turnover, and this turnover gap increased with the pandemic (17.7% B+CRP vs 11.1% overall annualized turnover in 2017; 27.4% in-scope vs 16.8% overall turnover in 2022; $p < 0.05$). Further, Houston Methodist B+CRP positions saw a 1.5-fold increase in turnover through the pandemic (16.9% average turnover 2017-2019 vs 25.0% average turnover 2020-2022). UTMB B+CRP pre-pandemic turnover was significantly lower than overall (1.7% B+CRP vs 9.8% overall annualized turnover in 2017, $p < 0.05$), but not during-pandemic. UTMB B+CRP turnover also experienced a 2-fold increase during the pandemic, compared to pre-pandemic levels (3.6% average turnover 2017-2019 vs 7.2% average turnover 2020-2022).

Analysis of demographic factors (age, gender, race/ethnicity) were not significantly different for B+CRP vs overall academic turnover (Supplementary Material, Figures S1-S3).

Discussion

A team comprised of faculty and non-faculty professionals is required to move an idea from basic, preclinical, and clinical research through clinical implementation. In this study, we examined workforce trends for non-faculty, B+CRP-specific workforce relative to the overall academic population at our institutions before and during the COVID-19 pandemic, ultimately to inform a model that can sustain the growing clinical and translational science workforce in our region.

One challenge we recognized as we gathered this workforce data is the inconsistency of job titles, job descriptions, and required experience between institutions, as attested elsewhere [18–20]. The HR structures at Houston Methodist and UTMB each had different job families and job titles. Job families within the academic enterprise were similar enough for this study's comparisons (Figure 2) but diverged from there. Whereas Houston Methodist had more granular job titles and departments for translational research responsibilities, UTMB job titles were more general and had to be combined with data from IRB protocols to ensure alignment of job responsibilities and positions with Houston Methodist. Careful mapping of job positions was required to generate comparable workforce data. Our experience and those of others [18–20] indicate a need to develop consistent job titles and descriptions for the clinical and translational research workforce nationwide to provide educational and career pathways, skills development, innovation in the field and professional growth opportunities. More consistent job positions would also facilitate future analysis and monitoring of workforce trends and evaluation of interventions. Consistent with this, the ACRP recently submitted a request to the U.S. Bureau of Labor Statistics to establish clinical researchers as a detailed occupation code within the Healthcare Practitioners and Technical Occupations job family [21].

Our findings show that the numbers of B+CRP staff employed by UTMB and Houston Methodist have increased during the last 5 years, largely during the COVID-19 pandemic. This is consistent with increased staff needed to support steady growth in clinical trials at our institutions, as well as the national increase in clinical trials between 2017-2022 [13]. This outcome is also comparable to other reports indicating that the demand for clinical research workers has increased related to the pandemic [6].

Our analysis showed that the two institutions had different pre-pandemic B+CRP turnover trends, with B+CRP turnover higher than the overall academic workforce at Houston Methodist, but lower than overall academic workforce at UTMB. It is possible that Houston Methodist B+CRP turnover was higher due to its central location in Houston, specifically within the Texas Medical Center with more competitors in proximity, compared to UTMB, which is the predominant academic medical center in the Galveston region. Both institutions experienced increased B+CRP position turnover compared to the overall academic workforce in the pandemic period. Given the increase in overall and translational headcount during this time, this is likely not due to overall reduction in United States workforce that other sectors faced with the advent of the pandemic. Given the density of clinical and translational institutions in the greater Houston-Galveston region, especially for Houston Methodist, as well as the growing potential to conduct many of these support positions remotely, higher turnover in translational positions may reflect employee movement for increased salaries, flexibility of work schedules, professional development opportunities, or job responsibilities, as experienced nationwide during the COVID-19 pandemic [22,23]. An analysis of more than 9 million employee records from 4000 global companies found that resignation rates were the highest in the technology and health care industries as the pandemic spread globally, consistent with our increased turnover data for B+CRP positions [24]. In contrast with reports that the number of women employed in research was more impacted by the pandemic and exit from workforce [25], our data did not show a significance difference in turnover based on gender, perhaps due to the sample size. Although outside the scope of this study, specialized on-boarding and retention efforts have been shown to improve employee turnover [19].

The Bay Area Houston Economic Partnership lists “healthcare and life sciences” as one of the five major drivers of the economy in the greater Houston-Galveston region [26], indicating the importance of a sustainable workforce in this sector. The increased turnover and slow recovery of the B+CRP workforce that we found suggests that action is needed to bring new workers into this niche. Although STEM careers such as nurses and physicians are high profile, other careers such as clinical coordinator, research nurse, clinical research administrator, and regulatory affairs manager are much less familiar to those working outside clinical and translational science. These careers also do not have dedicated schools; new degree programs and internship programs are broad, not yet well-known, and are more common outside the

Houston-Galveston region. To ensure a sustainable supply of candidates we believe that this region needs to develop pathways for B+CRP careers that work in this ecosystem.

One possible approach is to leverage a new ‘Greater Gulf Coast’ regional alliance (that includes Houston Methodist and UTMB) which formed in 2023 with the mission to build a sustainable biomedical ecosystem that brings new treatments to patients more efficiently. This alliance meets monthly and is very active in building “connectors” between undergraduate universities, academic medical centers, and regional economic partnership organizations to find ways to sustain the clinical translational science workforce and ecosystem in our region (Figure S4). The benefit of leveraging this type of alliance is the immediate multi-institutional reach for new programs which would source workforce candidates from the many local private and state funded undergraduate institutions, some of which are designated as minority-serving institutions (University of Houston-Clear Lake and Texas Southern University). Undergraduate trainees from a wide variety of backgrounds and transferable skills in areas such as business, finance, administration, law, education, communications, and social sciences could fulfill the region’s clinical translational workforce needs. The alliance also includes connections to programs for the underemployed and unemployed through regional economic development organizations like the Greater Houston Partnership and the Bay Area Houston Advanced Technology Consortium.

Study Limitations: Each economic area and ecosystem is unique; thus, our proposed alliance model is likely to be adaptable rather than directly generalizable. Others nationwide should consider how our observations and strategies suit their local ecosystems. Resources and organizations specific to each region and at the national level such as the University-Industry Demonstration Partnership (UIDP) exist to assist industry-academic partnerships, including workforce development [27]. Although the overall similarities of our academic enterprises allowed for comparison of workforce trends between institutions, differences in HR strategies prevented us from comparing employment data at the job title level. This reflects broader heterogeneity in job titles, descriptions, and required experience that may hinder recruitment and retention of clinical research professionals as they move between institutions throughout their careers [28]. Small numbers within subgroups also may have masked more insight into trends in employment differences based on demographic factors. Finally, this study focused on a specialized subset of the research workforce; while outside the scope of this study, additional

critical roles that support research, such as grant administrators, scientific writers, biostatisticians, and research compliance can also be considered less visible careers warranting investment in workforce development programs.

In the future, we plan to follow up with periodic assessments of the B+CRP workforce to track needs and correlations with economic changes and recovery programs implemented in our region. We will also continue to evaluate and disseminate the impact of workforce development programs that follow from this needs assessment and support the clinical and translational ecosystem of the Houston-Galveston region.

Author Contributions:

Conception of the work: RH, MSM, DEL, CH; collection of data: CH, MG; data analysis: MG, RS; interpretation of analysis: RH, MSM, DEL, CH, RS, MG, GS; drafting of manuscript: RH, MSM, DEL, CH, RS, MG, GS. All authors reviewed and approved the submitted manuscript. RH takes responsibility for the manuscript as a whole.

Acknowledgements

The authors thank Jacob M. Kolman of Houston Methodist for providing editorial support and project management. The authors thank Rachael Whitehead of Houston Methodist for graphic design support. The authors are entirely responsible for the scientific content of the paper which adheres to the journal's authorship policy.

Competing Interests

The authors declare none.

Funding statement

This work was supported in part by a Clinical and Translational Science Award (UL1TR001439) from the National Center for Advancing Translational Sciences, National Institutes of Health, to The University of Texas Medical Branch.

Figures and Figure Legends

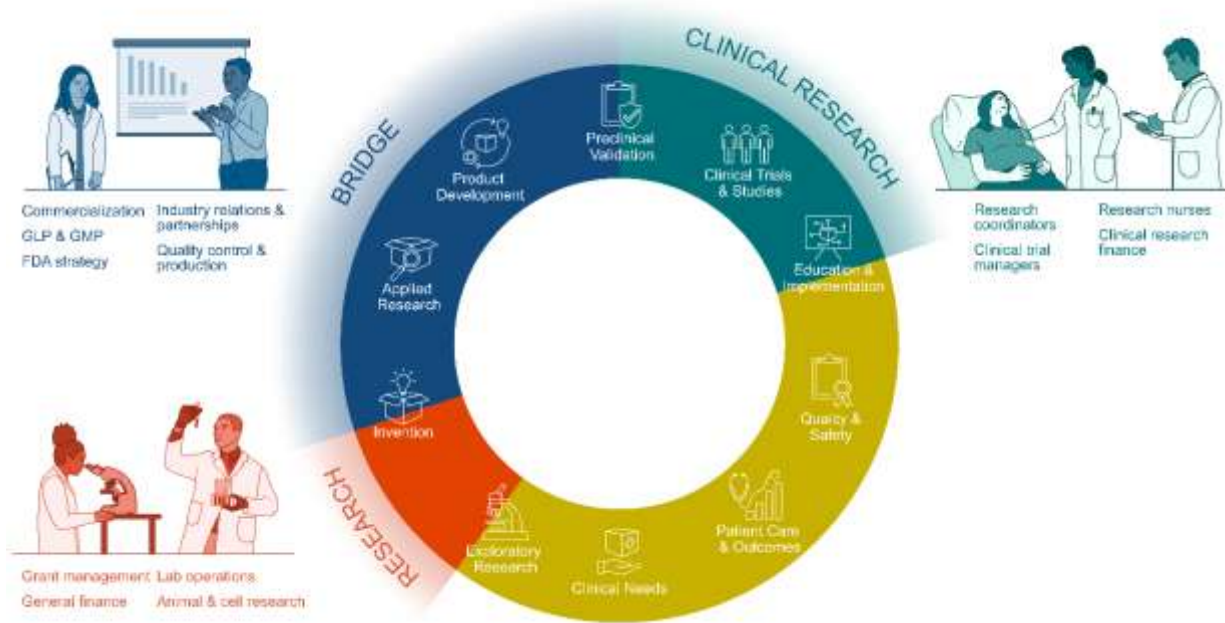


Figure 1. Staff (non-faculty) positions critical to bridge basic research discoveries through clinical research into clinical use.

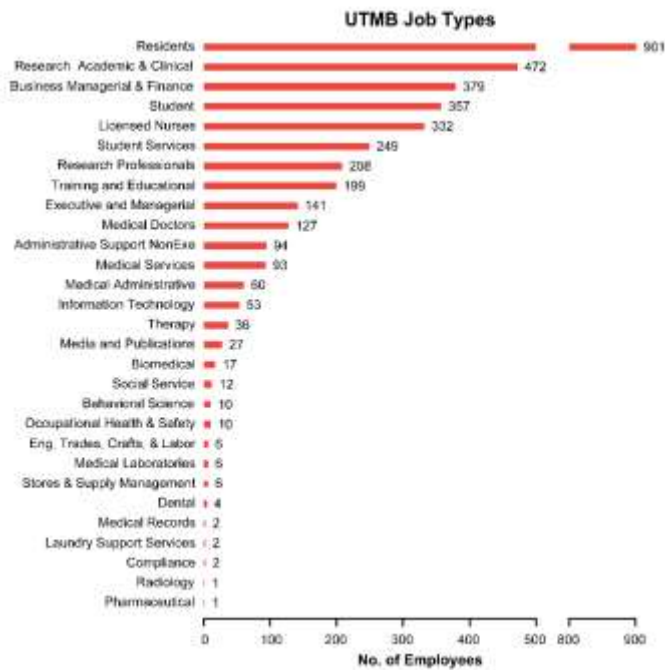
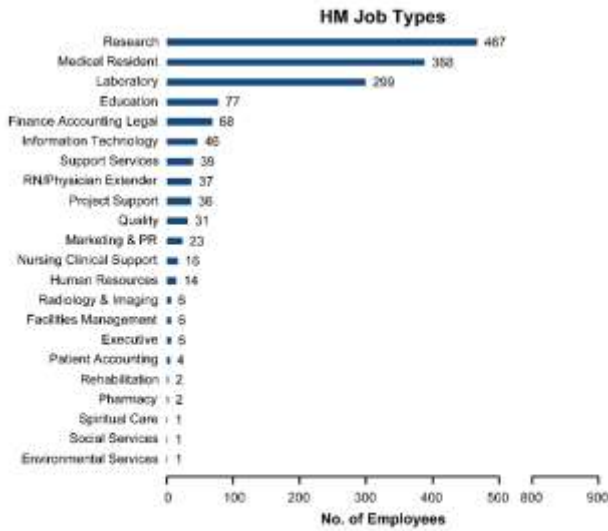


Figure 2. Characterization of academic workforce at Houston Methodist and UTMB. Headcounts of academic enterprise employees in 2023 were categorized by HR job families at Houston Methodist and UTMB. The academic workforce had similar job families at both institutions, though larger at UTMB (overall UTMB 2023 headcount = 3807, compared to Houston Methodist 1570).

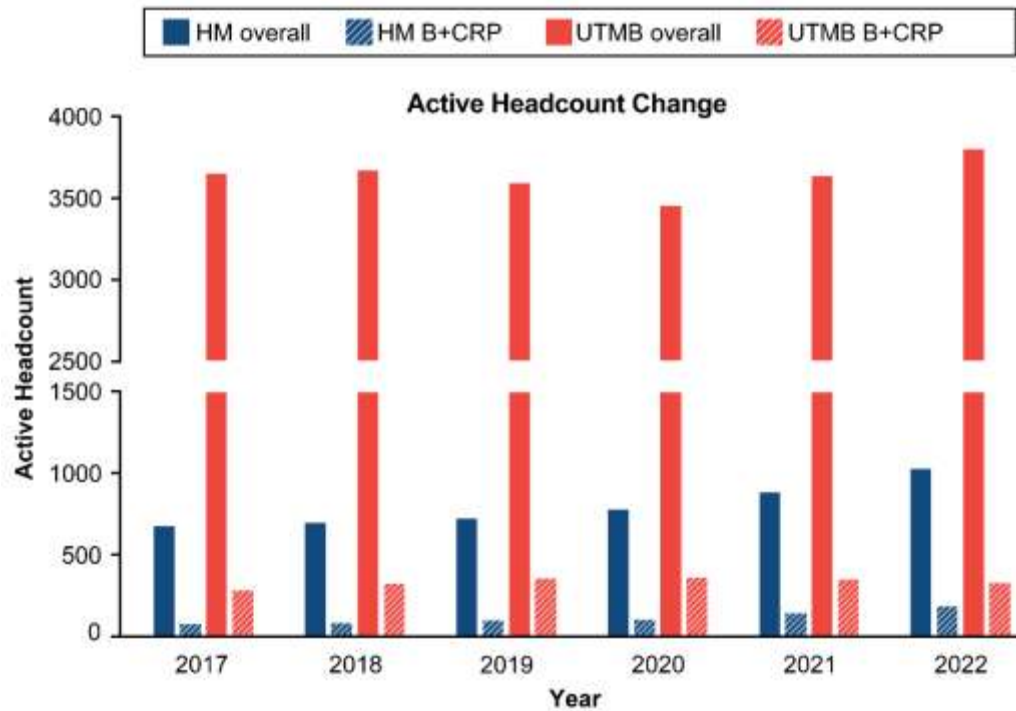


Figure 3. Overall academic and B+CRP workforce headcount at Houston Methodist and UTMB from 2017-2022. B+CRP versus overall academic workforce headcount was compared for Houston Methodist and UTMB from 2017-2022 to determine if B+CRP positions experienced different employment trends during the COVID-19 pandemic. Houston Methodist overall and B+CRP headcounts experienced 1.5-fold (overall, blue solid) and 2.3-fold (blue dashed, B+CRP) growth, respectively, from 2017-2022. UTMB B+CRP headcount experienced 17% increase (orange dashed bars), compared to 4% increase in overall academic workforce (solid orange).

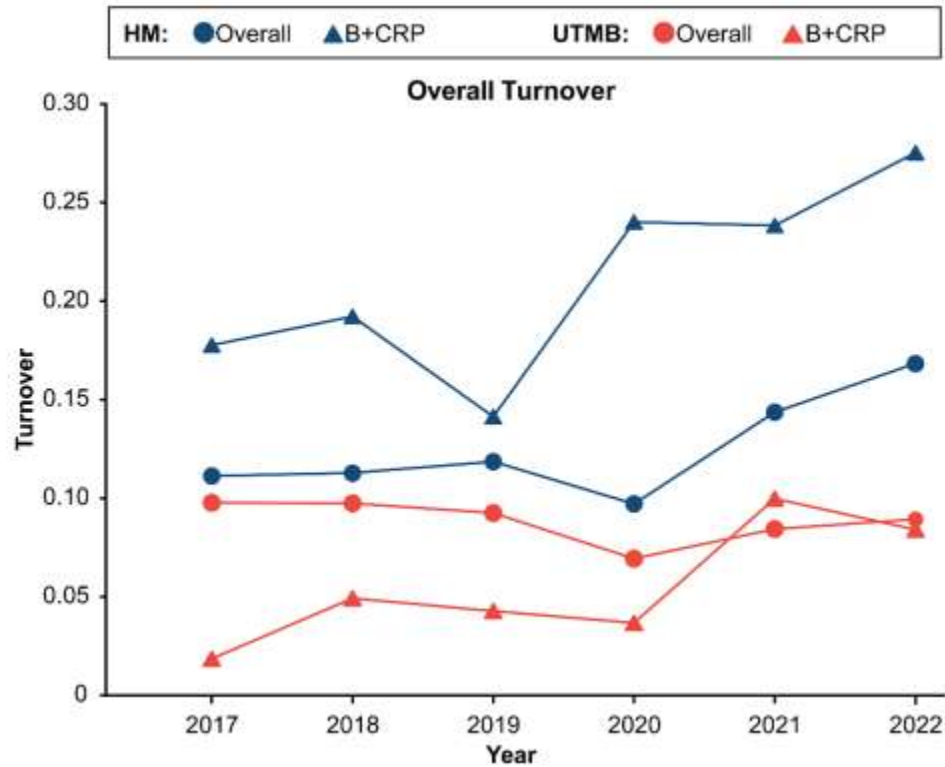


Figure 4. B+CRP workforce turnover increases during the COVID-19 pandemic at two academic medical centers. Annualized turnover was calculated for years 2017-2022 for overall (circles) and B+CRP (triangles) positions at Houston Methodist (blue) and UTMB (orange). B+CRP positions at Houston Methodist had significantly higher turnover than overall academic workforce pre-pandemic, and this effect increased through the pandemic. UTMB B+CRP positions had significantly lower turnover pre-pandemic but reached overall-workforce turnover levels through the COVID-19 pandemic. $P < 0.05$ by Chi square test per year.

References

1. **Collins FS.** Reengineering translational science: the time is right. *Sci Transl Med.* 2011; **3**(90): 90cm17. doi: 10.1126/scitranslmed.3002747
2. **Seyhan AA.** Lost in translation: the valley of death across preclinical and clinical divide – identification of problems and overcoming obstacles. *Translational Medicine Communications* 2019; **4**(1): 18. doi: 10.1186/s41231-019-0050-7
3. **National Center for Advancing Translational Sciences.** *NCATS 2016 Report: Improving Health Through Smarter Science.* Rockville, MD: National Center for Advancing Translational Sciences, National Institutes of Health, 2016.
4. **National Academies of Sciences, Engineering, and Medicine, Policy and Global Affairs, Board on Higher Education and Workforce, Committee on the Next Generation Initiative.** *The Next Generation of Biomedical and Behavioral Sciences Researchers: Breaking Through.* Washington, DC: National Academies Press (US), 2018.
5. **A Working Group of the Advisory Committee to the Director, National Institutes of Health.** *Biomedical Workforce Working Group Report.* Bethesda, MD: U.S. Department of Health and Human Services, National Institutes of Health, 2012.
6. **Association of Clinical Research Professionals (ACRP).** *An Assessment of the Adequacy of the Clinical Research Workforce.* Alexandria, VA: Association of Clinical Research Professionals, 2020.
7. **National Science Foundation.** NSF GRANTED: Growing Research Access for Nationally Transformative Equity and Diversity, (<https://new.nsf.gov/funding/initiatives/broadening-participation/granted>) Accessed July 24, 2024.
8. **U.S. Department of Health and Human Services, National Institutes of Health (NIH), National Center for Advancing Translational Sciences (NCATS).** PAR-21-293: Clinical and Translational Science Award (UM1 Clinical Trial Optional), (<https://grants.nih.gov/grants/guide/pa-files/PAR-21-293.html>) Accessed July 22, 2024.
9. **Lenzi RN, Korn SJ, Wallace M, Desmond NL, Labosky PA.** The NIH “BEST” programs: Institutional programs, the program evaluation, and early data. *FASEB J.* 2020; **34**(3): 3570–3582.

10. **U.S. Bureau of Labor Statistics, Office of Occupational Statistics and Employment Projections.** Clinical Laboratory Technologists and Technicians. Occupational Outlook Handbook, (<https://www.bls.gov/ooh/healthcare/clinical-laboratory-technologists-and-technicians.htm>) Accessed July 24, 2024.
11. **U.S. Bureau of Labor Statistics, Office of Occupational Statistics and Employment Projections.** Biological Technicians. Occupational Outlook Handbook, (<https://www.bls.gov/ooh/life-physical-and-social-science/biological-technicians.htm>) Accessed July 24, 2024.
12. **U.S. Bureau of Labor Statistics, Office of Occupational Statistics and Employment Projections.** Medical Scientists. Occupational Outlook Handbook, (<https://www.bls.gov/ooh/life-physical-and-social-science/medical-scientists.htm>) Accessed July 24, 2024.
13. **U.S. Department of Health and Human Services, National Institutes of Health, National Library of Medicine, National Center for Biotechnology Information.** Trends and Charts on Registered Studies. ClinicalTrials.gov, (<https://clinicaltrials.gov/about-site/trends-charts>) Accessed July 24, 2024.
14. **Freel S, Snyder DC, Bastarache K, et al.** Now is the time to fix the clinical research workforce crisis. *Clinical Trials* 2023; 20(5): 457–462.
15. **Rotenstein LS, Brown R, Sinsky C, Linzer M.** The association of work overload with burnout and intent to leave the job across the healthcare workforce during COVID-19. *J Gen Intern Med.* 2023; **38**(8): 1920–1927.
16. **Dizon DS, Szczepanek CM, Petrylak DP, et al.** National impact of the COVID-19 pandemic on clinical trial staff attrition: results of the SWOG Cancer Research Network Survey of Oncology Research Professionals. *J Clin Oncol.* 2022; **40**(16_suppl): 11049–11049. doi: 10.1200/JCO.2022.40.16_suppl.11049
17. **El-Galaly TC, Gaidzik VI, Gaman M-A, et al.** A lack of diversity, equity, and inclusion in clinical research has direct impact on patient care. *HemaSphere.* 2023; **7**(3): e842. doi: 10.1097/HS9.0000000000000842
18. **Knapke JM, Snyder DC, Carter K, et al.** Issues for recruitment and retention of clinical research professionals at academic medical centers: Part 1 – collaborative

- conversations Un-Meeting findings. *J Clin Transl Sci.* 2022; **6**(1): 1–30. doi: 10.1017/cts.2022.411
19. **Knapke JM, Jenkerson M, Tsao P, et al.** Academic medical center clinical research professional workforce: Part 2 – Issues in staff onboarding and professional development. *J Clin Transl Sci.* 2022; **6**(1): 1–32. doi: 10.1017/cts.2022.412
 20. **Snyder DC, Gaudaur H, Marchant M, et al.** Enhancing the clinical research workforce: a collaborative approach with human resources. *Front Pharmacol.* 2024; **15**: 1295155. doi: 10.3389/fphar.2024.1295155
 21. **Association of Clinical Research Professionals (ACRP).** ACRP Advocates for Clinical Researcher Occupation Code. *ACRP Insights: Press Releases.* 2024; Published online: December 2, 2024, (<https://acrpnnet.org/2024/12/02/acrp-advocates-for-clinical-researcher-occupation-code>) Accessed January 9, 2025.
 22. **Henderson L.** Salary survey: a healthy trajectory for clinical research professionals. *Appl Clin Trials.* 2020; **29**(2).
 23. **Sun G, Dizon DS, Szczepanek CM, et al.** Crisis of the clinical trials staff attrition after the COVID-19 pandemic. *JCO Oncol Pract.* 2023; **19**(8): 533–535.
 24. **Cook I.** Who is driving the great resignation? *Harvard Business Review.* 2021; Published online: September 15, 2021, (<https://hbr.org/2021/09/who-is-driving-the-great-resignation>) Accessed July 24, 2024.
 25. **Davis PB, Meagher EA, Pomeroy C, et al.** Pandemic-related barriers to the success of women in research: a framework for action. *Nat Med.* 2022; **28**(3): 436–438.
 26. **Bay Area Houston Economic Partnership.** Regional Profile, (<https://bayareahouston.com/regional-profile/>) Accessed July 25, 2024.
 27. **UIDP.** Innovative approaches to U-I collaboration, (<https://uidp.org/>) Accessed July 31, 2024.
 28. **Brouwer RN, Deeter C, Hannah D, et al.** Using competencies to transform clinical research job classifications. *J Res Adm.* 2017; **48**(2): 11–25.