

## CONTENTS

### EAAP Annual Meeting, Livestock Farming Systems

*Ingrand, S.*

Foreword

Modelling within the livestock farming systems research field: from cows to birds and farmers 817

*Tichit, M., Barbottin, A. and Makowski, D.*

A methodological approach to identify cheap and accurate indicators for biodiversity assessment: application to grazing management and two grassland bird species 819

*Gouttenoire, L., Fiorelli, J. L., Trommenschlager, J. M., Coquil, X. and Cournut, S.*

Understanding the reproductive performance of a dairy cattle herd by using both analytical and systemic approaches: a case study based on a system experiment 827

*Magne, M. A., Cerf, M. and Ingrand, S.*

A conceptual model of farmers' informational activity: a tool for improved support of livestock farming management 842

### Breeding and genetics

*Terzi, V., Morcia, C., Spini, M., Tudisco, R., Cutrignelli, M. I., Infascelli, F., Stanca, A. M. and Faccioli, P.*

Identification and validation of reference genes for gene expression studies in water buffalo 853

*Chen, C. Y., Guo, Y. M., Zhang, Z. Y., Ren, J. and Huang, L. S.*

A whole genome scan to detect quantitative trait loci for gestation length and sow maternal ability related traits in a White Duroc × Erhualian F<sub>2</sub> resource population 861

*Bartolomé, E., Goyache, F., Molina, A., Cervantes, I., Valera, M. and Gutiérrez, J. P.*

Pedigree estimation of the (sub) population contribution to the total gene diversity: the horse coat colour case 867

### Nutrition

*Blaabjerg, K., Jørgensen, H., Tauson, A.-H. and Poulsen, H. D.*

Heat-treatment, phytase and fermented liquid feeding affect the presence of inositol phosphates in ileal digesta and phosphorus digestibility in pigs fed a wheat and barley diet 876

### Physiology and functional biology of systems

*Prunier, A., Heinonen, M. and Quesnel, H.*

High physiological demands in intensively raised pigs: impact on health and welfare (review) 886

*Litten-Brown, J. C., Corson, A. M. and Clarke, L.*

Porcine models for the metabolic syndrome, digestive and bone disorders: a general overview (review) 899

*Zhao, X. E. and Zheng, Y. M.*

Development of cloned embryos from porcine neural stem cells and amniotic fluid-derived stem cells 921

*Bonneau, M.*

Accessory sex glands as a tool to measure the efficacy of immunocastration in male pigs 930

*Moretti, D. B., Kindlein, L., Pauletti, P. and Machado-Neto, R.*

IgG absorption by Santa Ines lambs fed Holstein bovine colostrum or Santa Ines ovine colostrum 933

*Lazarevic, M., Spring, P., Shabanovic, M., Tokic, V. and Tucker, L. A.*

Effect of gut active carbohydrates on plasma IgG concentrations in piglets and calves 938

*Villeneuve, L., Cinq-Mars, D. and Lacasse, P.*

Effects of restricted feeding of prepubertal ewe lambs on growth performance and mammary gland development 944

### Behaviour, welfare and health

*Ahola, L., Turunen, A., Mononen, J. and Koistinen, T.*

Gnawing bones as enrichment for farmed blue foxes (*Vulpes lagopus*) 951

*López-Campos, Ó., Bodas, R., Prieto, N., Giráldez, F. J., Pérez, V. and Andrés, S.*

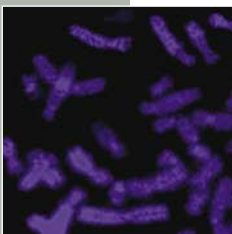
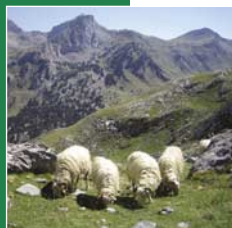
Naringin dietary supplementation at 0.15% rates does not provide protection against sub-clinical acidosis and does not affect the responses of fattening lambs to road transportation 958

*Rydhmer, L., Lundström, K. and Andersson, K.*

Immunocastration reduces aggressive and sexual behaviour in male pigs 965

*Zulkifli, I., Norbajyah, B., Cheah, Y. W., Soleimani, A. F., Sazili, A. Q., Goh, Y. M. and Rajion, M. A.*

A note on heat shock protein 70 expression in goats subjected to road transportation under hot, humid tropical conditions 973



# journals.cambridge.org

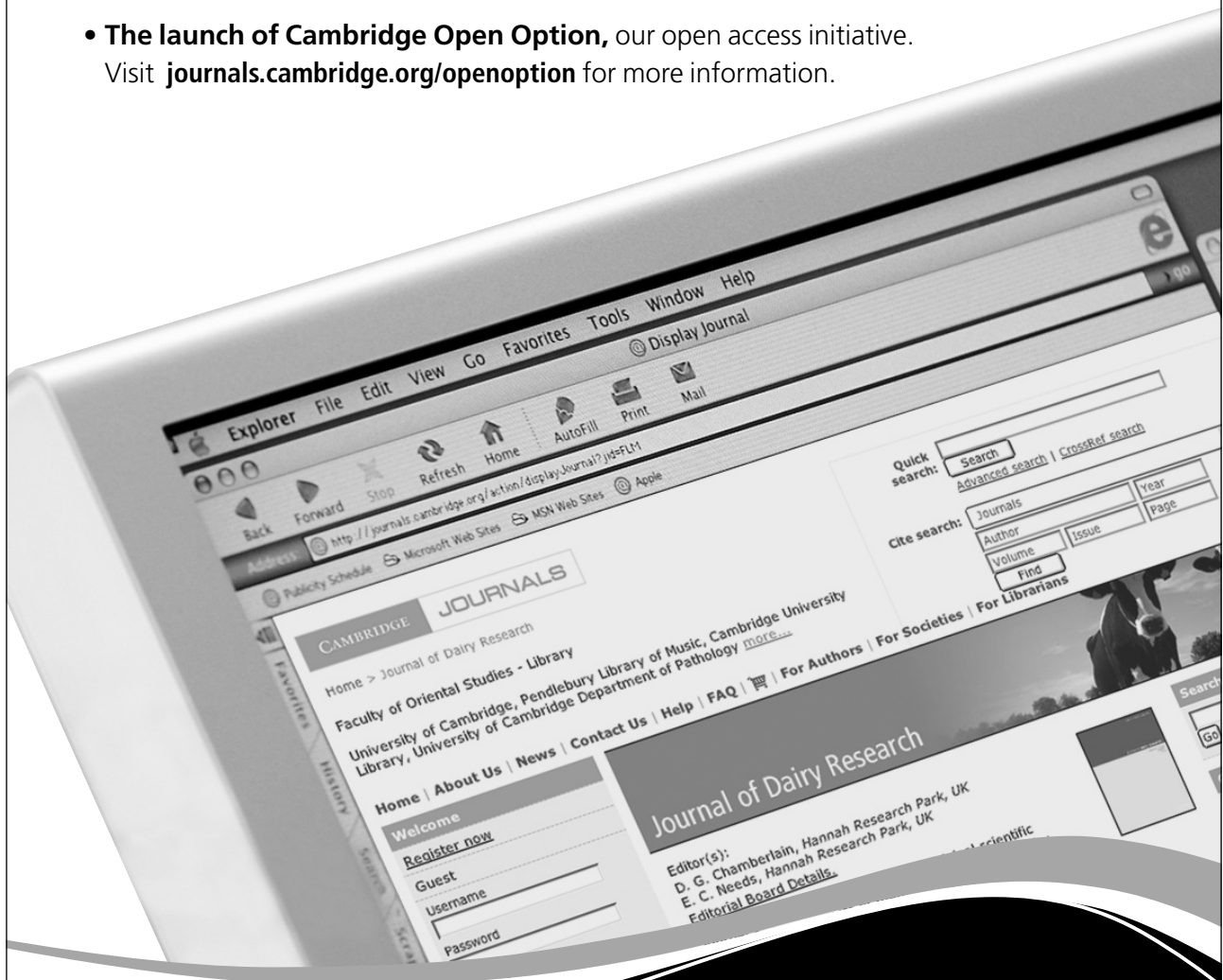
## Advancing research. Increasing access.

Informed by detailed consultation with the library and research communities, we are constantly developing our industry-leading online journals platform.

Some recent advances include:

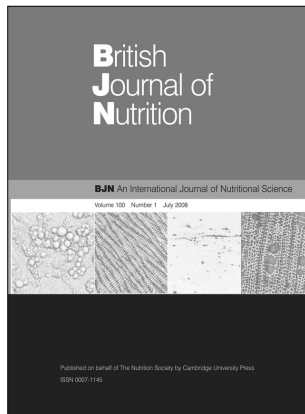
- **Refreshed site design**, facilitating rapid access to the most relevant content.
- **New advanced search interface** and a more detailed, fielded quick search function.
- **Enriched content** in the form of multimedia companions and editorial blogs.
- **The launch of Cambridge Open Option**, our open access initiative.

Visit [journals.cambridge.org/openoption](http://journals.cambridge.org/openoption) for more information.



CAMBRIDGE

JOURNALS



# British Journal of Nutrition

Published on behalf of The Nutrition Society

**British Journal of Nutrition**

is available online at:

<http://journals.cambridge.org/bjn>

**To subscribe contact  
Customer Services**

**in Cambridge:**

Phone +44 (0)1223 326070

Fax +44 (0)1223 325150

Email [journals@cambridge.org](mailto:journals@cambridge.org)

**in New York:**

Phone +1 (845) 353 7500

Fax +1 (845) 353 4141

Email

[subscriptions\\_newyork@cambridge.org](mailto:subscriptions_newyork@cambridge.org)

**Editor-in-chief**

P.C. Calder, University of Southampton, UK

*British Journal of Nutrition* is a leading international peer-reviewed journal covering research on human and clinical nutrition, animal nutrition and basic science as applied to nutrition. The journal recognises the multidisciplinary nature of nutritional science and includes material from all of the specialities involved in nutrition research, including molecular and cell biology and the emerging area of nutritional genomics.

**Price information is available at:**  
**<http://journals.cambridge.org/bjn>**

**Free email alerts**

Keep up-to-date with new material – sign up at  
<http://journals.cambridge.org/alerts>

**For free online content visit:**  
<http://journals.cambridge.org/bjn>



**CAMBRIDGE**  
UNIVERSITY PRESS

CAMBRIDGE

JOURNALS



# Journal of Helminthology

**Journal of Helminthology**

is available online at  
<http://journals.cambridge.org/jhl>

**To subscribe contact  
Customer Services**

**in Cambridge:**

Phone +44 (0)1223 326070  
Fax +44 (0)1223 325150  
Email [journals@cambridge.org](mailto:journals@cambridge.org)

**in New York:**

Phone +1 (845) 353 7500  
Fax +1 (845) 353 4141  
Email  
[subscriptions\\_newyork@cambridge.org](mailto:subscriptions_newyork@cambridge.org)

**Editor**

John Lewis, Royal Holloway, University of London, UK

*Journal of Helminthology* publishes original papers and review articles on all aspects of pure and applied helminthology, particularly those helminth parasites of environmental health, medical or veterinary importance. Research papers on helminths in wildlife hosts, including plant and insect parasites, are also published along with taxonomic papers contributing to the systematics of a group. The journal will be of interest to academics and researchers involved in the fields of human and veterinary parasitology, public health, microbiology, ecology and biochemistry.

**Price information is available at  
[journals.cambridge.org/jhl](http://journals.cambridge.org/jhl)**

**Free email alerts**

Keep up-to-date with new material – sign up at  
[journals.cambridge.org/alerts](http://journals.cambridge.org/alerts)

**For free online content visit**  
<http://journals.cambridge.org/jhl>



**CAMBRIDGE**  
UNIVERSITY PRESS