

# PREHOSPITAL and DISASTER MEDICINE

Médecine Pré-Hospitalière et Médecine de Catastrophe

Volume 8, Number 3

July–September 1993

## **Original Research**

Clinical Trial of Blood Glucose Meter  
Asthma in Children  
Intubation in Head Trauma  
Prehospital Index as Predictor of Hemorrhage

## **Brief Reports**

Dobutamine in the Prehospital Setting

## **Position Paper**

Wound Care in Prolonged Transport

## **Continuing Education**

Tools and Methods of Disaster Management

## **Abstracts**

8th World Congress on Emergency and Disaster Medicine  
Stockholm, Sweden, 20–23 June 1993

The Official Journal of the  
National Association of EMS Physicians and the  
World Association for Disaster and Emergency Medicine  
in association with the  
Acute Care Foundation and the  
National Association of State EMS Directors

Published Quarterly by Jems Communications

# LifeDefense Plus™ from Matrux

## The New Standard in Defibrillator/Monitor/Pacers



The new standard in defibrillator/monitor/pacers, LifeDefense Plus™ is the result of a joint venture between Matrux Medical Inc., the largest distributor and manufacturer of emergency care equipment and supplies in the United States, and NEC San-ei Instruments Ltd., a worldwide leader in medical electronic technology. The new lightweight (18.7 lbs.) integrated defibrillator/monitor/pacer, LifeDefense Plus™ incorporates as standard, features that other units offer only as options.

### Defibrillator

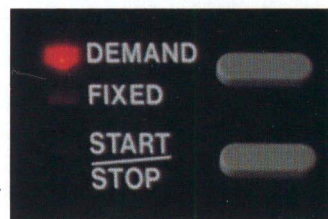
- Impedance indicator on paddle
- Energy setting on paddle
- Remote defibrillation
- Synchronized cardioversion
- Automatic recording of defibrillation event
- Pediatric paddle adapters

### Monitor

- Large 7 sq. in. Sony® CRT screen
- Direct monitoring from ECG electrodes, paddles, or defibrillation electrodes
- Audio/visual message system
- Real/delay recording modes
- Annotated messages on Z-fold thermal paper

### Pacer

- Demand pacing
- Fixed pacing
- High-impedance, conductive rubber electrodes



### Battery support/accessories

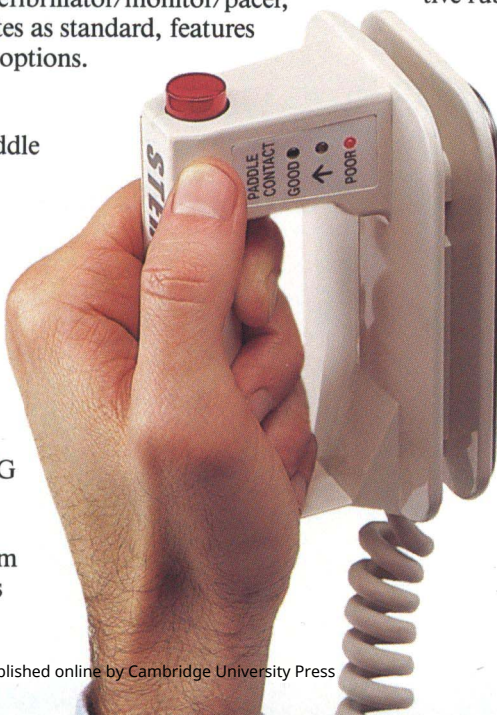
- High-capacity 2.2 amp hour NiCad battery
- Multiple-function battery support system
- Full complement of quality Matrux accessories

For more information and a demonstration of LifeDefense Plus™, the new standard in emergency cardiac care, call Matrux at 1-800-845-3550.

# Matrux

MEDICAL INC.

Corporate Headquarters/Technical Information  
Matrux Medical Inc., 145 Mid County Drive  
Orchard Park, NY 14127  
U.S. (716) 662-6650 (800) 847-1000  
Distribution (800) 845-3550  
Canada (800) 876-2879  
United Kingdom (0252) 621442



**Editor's Corner**

**We the People** .....215  
*Marvin L. Birnbaum, MD, PhD*

**Original Research**

**ExacTech Blood Glucose Meter Clinical Trial** .....217  
*Edward A. Bartkus, BS, EMT-P, Mohamud Daya, MD, Jerris R. Hedges, MD, Jonathan Jui, MD*

**Emergent Intubation and CT Scan Pathology of Blunt Trauma Patients with Glasgow Coma Scale Scores of 3–13** .....229  
*Albert K. Hsiao, MD, Stuart P. Michelson, MD, Jerris R. Hedges, MD, MS, FACEP*

**Accuracy of the Prehospital Index in Identifying Major Hemorrhage in Trauma Victims** .....237  
*Jeffrey Jones, MD, FACEP, Carol Newman, MD, Jon Krohmer, MD, FACEP, Connie Mattice, BSN*

**Factors Influencing Treatment of Asthma in Children in the Prehospital Setting** .....241  
*Bartholomew J. Tortella, MTS, MD, Annicol D. Marrocco, MD, Robert F. Lavery, BA, MICP, Noel Killeen, MICP*

**Brief Reports**

**Prehospital Treatment with Dobutamine** .....247  
*Bjarne Oberg, MD, Mogens Bredgaard Sorensen, MD, PhD*

**We Believe**

**Clinical Guidelines for Delayed or Prolonged Transport: IV. Wounds** .....253  
*Peter Goth, MD, George Garnett, MD*

**Continuing Education**

**Introduction to Disaster Management: Lesson 4—The Tools and Methods of Disaster Management** .....259  
*Frederick C. Cuny*

**Forum** .....268

*Editor's Note: The abstract cards for the Original Research papers will be included in Volume 8, Number 4.*

**Supplement Abstracts from the 8th World Congress on Emergency and Disaster Medicine** .....271

**Publication and Production Editor**

Roland Tracy Will II  
School of Medicine  
University of Wisconsin—Madison, USA

Elizabeth Chapin  
Editorial Assistant

**Advertising, Production and Subscription  
Jems Communications**

James O. Page, **Publisher**  
Keith Griffiths, **Executive Editor**  
Betty Till, **Vice President**  
Thomas D. Scott II, **Secretary/Treasurer**  
Laura Gilbert, **Managing Editor**  
Harriett Wilcox, **Production Manager**  
Gail M. Williams, **Graphics Specialist**  
Janene Long, **Production Coordinator**  
Marte Reavis, **Senior Advertising Manager**  
MaryBeth Locastro, **Advertising Manager**  
Richard Bilger, **Account Executive**  
Kevin Petrie, **Fulfillment Manager**

*Prehospital and Disaster Medicine* (ISSN 1049-023X) is published quarterly in the months of December, March, June, and September by Jems Communications, 1947 Camino Vida Roble, Carlsbad, CA 92008-6513, USA; (619) 431-9797. *Prehospital and Disaster Medicine* incorporates the *Journal of the World Association for Emergency and Disaster Medicine* and the *Journal of Prehospital Medicine*.

**Editorial Information:** Submit manuscripts and editorial inquiries to: Marvin L. Birnbaum, MD, Editor, *Prehospital and Disaster Medicine*, 1552 University Avenue, Room 434, Madison, WI 53705, USA; (608) 263-7094, (608) 263-2069, Fax (608) 263-2069.

**Subscription Information:** One year (four issues)—Institutions: (U.S.)\$78; Individuals: \$48; Residents/In Training: \$35; Paramedic, Nurse, EMT: \$35. Canadian subscribers must add \$10 per year, and international subscribers add (U.S.) \$20 per year for postage. Claims of non-receipt or damaged issues must be filed within three months of cover date.

**Advertising Information:** Contact Jems Communications, P.O. Box 2789, Carlsbad, CA 92018; (619) 431-9797; Fax (619) 431-8176

**Abstracts:** Abstracts available in the National Association of EMS Physicians Electronic Database and the Emergency Care Information Center (ECIC). Indexed in the Cumulative Index to Nursing and Allied Health (CINAHL). The database is available online via BRS, Data-Star, and DIALOG, and on CD-ROM through CD Plus, Compact Cambridge and Silver Plat-ter.

Copyright © 1993 by the National Association of Emergency Medical Services Physicians (USA), World Association for Disaster and Emergency Medicine, and the Acute Care Foundation.

Postmaster: Send address changes to *Prehospital and Disaster Medicine*, P.O. Box 2789, Carlsbad, CA 92018.

Second-class circulation postage paid at Carlsbad, Calif., and at additional mailing offices.

# INFORMATION FOR AUTHORS

## Organization of Scientific Papers

1. **Abstract**—Concise summaries in the following format: **Introduction**: Need for the study; **Hypothesis**: what was tested (experimental studies only); **Methods**: summary of methods used with subsections as appropriate (type of subjects, number of subjects, study design, statistical tests); **Results**: summary of principal findings; **Conclusion**: implications of findings. If the work is qualitative, the types of instruments used and the scope and type of work must be annotated. If a disaster is involved, the dates, type, scope, location, and numbers of casualties and deaths must be summarized in tabular form for indexing. At least eight key words or phrases which allow easy access by an index must be provided.
2. **Introduction**—Provides justification for the effort with appropriate references annotated. The concluding sentence should define the hypothesis.
3. **Methods**—The Methods section should be descriptive to a degree that other investigators would be able to reproduce the findings. Statistical methods used must be annotated. Approval by an Institutional Review Committee *must be included* when appropriate.
4. **Results**—Results must be written in the text and may be accompanied by tables and figures that illustrate the textual material. The text must explain in detail, all data provided as included in tables and figures, but should not be unnecessarily redundant. All direct results from the study must appear in this section. No discussion of the results may be included in this section.
5. **Discussion**—The Discussion should provide an interpretation of the Results in terms of meaning and application. Results should not be repeated. Computations or extrapolations which may help explain the results may be provided. Limitations of the study should be defined and suggestions for future research should be included. References which support or negate explanations provided are appropriate.
6. **Conclusion**—The findings in terms of implications for the practice of Prehospital and/or Disaster Medicine should be summarized in a few sentences.
7. **References**—See General References 9.

## General Submission Requirements

1. **Previous Publication**—Manuscripts will be considered only if they have not been published previously and are not under consideration for publication elsewhere.
2. **Copyrights**—After acceptance for publication, the copyright to the manuscript rests with *Prehospital and Disaster Medicine*.
3. **Cover letter**—All manuscripts should be accompanied by a cover letter from the primary author that attests to the original nature of the material, that the paper has not been published elsewhere, is not under consideration by any other publication, and that the authors agree to transfer copyright to *Prehospital and Disaster Medicine* if accepted for publication. The institution(s) in which the work was performed, the sponsoring institution(s), and the respective departments must be annotated. If the work was supported all or in part by grants or endowments, the granting institution(s) should be indicated. If the paper has been, or is to be presented orally, indicate the title of the forum, sponsoring institution, and the date of presentation. Specify the name of the author with whom any correspondence should be directed, and, correspondence street address, telephone number, telefacsimile (Fax) number. If a personal computer is used to prepare the manuscript, include a disk version of the manuscript and indicate the type of computer and word processing software used.
4. **Language**—All manuscripts must be submitted in English.
5. **Paper, Margins, and Type Style**—Manuscripts should be submitted on plain white paper, 8.5" by 11" (21cm by 28cm). *Do not right justify the margins.* To allow the use of optical character scanners that read the manuscripts into the computers, use standard type styles (Courier only) in 10-point pitch (Type should look as if it was typed on a typewriter). Do not use bold, italicized, superscript, or subscript characters, and make no extraneous marks on the printed manuscript page.
6. **Cover page**—Each manuscript should include a cover page that includes the title of the paper, first names, middle initials, last names, and highest academic degrees of all authors. Reiterate from the cover letter the name of the author with whom any correspondence should be directed and the street address, telephone

- number, and telefacsimile (FAX) number. Do not indicate author names or institutions anywhere in the manuscript other than on the cover page.
7. **Key Words**—On a separate page, show the title of the manuscript and eight or more key words to facilitate indexing.
  8. **Generic names**—Whenever possible, use generic names. Brand names may be indicated parenthetically and the name and location of the manufacturer must be provided in parentheses followed by a generic description of the medication, drug, product, or equipment. Also do not use *We* or *Our* when describing the researchers. The fact that the research was conducted by the authors is implicit.
  9. **References**—References should be cited in sequential order in which they appear in the text. All references should be parenthetically cited by full-sized Arabic numbers in the text, tables, and legends for illustrations. Titles of journals referenced must be annotated using standard *Index Medicus* abbreviations and must be underscored. Unpublished data or personal communications should be indicated in parentheses directly following the reference and should include the dates of such correspondence (Personal Communication, Safar P, October 1989). The following format for references should be used:  
*Journals*—White SJ, Hamilton WA, Veronesi JF: Comparison of field techniques used to pressure infuse intravenous fluids. *Prehospital and Disaster Medicine* 1991;6:429-434.  
*Books*—Schwartz GR, Safar P, Stone JH, et al, eds: *Principles and Practice of Emergency Medicine*. 2d ed. Philadelphia: W. B. Saunders Co., 1985, pp 1198-1202.  
*Chapters*—Lindberg R: Pathology of Head Injuries. In: Cowley RA, Trump BF (eds), *Pathophysiology of Shock*. Baltimore: Williams and Wilkins, 1982, pp 588-592.
  10. **Abbreviations**—Abbreviations for groups of words may be used *only* for unusually cumbersome titles or for commonly accepted abbreviations. Whenever such abbreviations are used, they must be annotated with the initial mention of words within the manuscript followed by the abbreviation in parentheses. Standard scientific abbreviations may not be sub- or super-scripted. All hemodynamic pressures should be expressed in mmHg. Gas tensions should be expressed in torr.
  11. **Tables**—Tables must be numbered as referenced in the text and each typed on a separate page.
  12. **Figures**—Illustrative materials must be of professional quality and camera ready (e.g., glossy camera-ready reproductions or PMTs). All such materials should be submitted as large as possible, up to 8.5" by 11" (21 cm by 28 cm) and have sufficient resolution for clarity when subsequently reduced to 3-inch margin size. All figures should be set in Helvetica typescript. Color illustrations cannot be reproduced in this journal. Legends of figures are to be typed with double spacing on a separate page with reference to the number of the figure. The manuscript title, figure number, and an arrow to indicate the top of the illustration must be annotated on the back of each figure.
  13. **Permissions**—Illustrations or tables of materials from other publications must be accompanied by written permission from the author and publishers of the document in which they originally appeared.
  14. **Electronic versions of manuscripts**—If a personal computer word processor was used to prepare the manuscript, a diskette enclosed with the name of the manuscript document file must accompany the manuscript once it has been accepted for publication. If possible, send two copies of the file, one in the word processor program and the other in ASCII file format. A 3.5-inch, double side, double density diskette is preferred from either an MS-DOS or Macintosh system. Please indicate the type of computer (IBM clone, Apple Macintosh Classic, etc.), the name of the word processor software program, and the name of the disk files. Please, label the disk to include the paper's title and the author's surname.
  15. **Copies**—Include four copies and one original.

## Additional Information

Contact Marvin L. Birnbaum, MD, PhD, Editor, *Prehospital and Disaster Medicine*, 1552 University Avenue, Room 434, Madison, WI 53705, USA, (608) 263-7094.

# PREHOSPITAL and DISASTER MEDICINE

*Médecine Pré-Hospitalière et Médecine de Catastrophe*

THE OFFICIAL JOURNAL OF THE WORLD ASSOCIATION FOR DISASTER AND EMERGENCY MEDICINE (WADEM),\*  
THE NATIONAL ASSOCIATION OF EMERGENCY MEDICAL SERVICES PHYSICIANS (NAEMSP),  
IN ASSOCIATION WITH THE ACUTE CARE FOUNDATION AND  
THE NATIONAL ASSOCIATION OF STATE EMERGENCY MEDICAL SERVICES DIRECTORS (NASEMSD)

## EDITOR

Marvin L. Birnbaum, MD, PhD  
EMS Program  
University of Wisconsin–Madison  
Madison, Wisconsin, USA

## ASSOCIATE EDITORS

Kimball Maull, MD  
MIEMSS  
Baltimore, Maryland, USA

Steven Rottman, MD  
Department of Emergency  
Medicine  
UCLA Hospitals and Clinics  
Los Angeles, California, USA

Martin Silverstein, MD  
Department of Surgery  
Uniformed Services University of  
the Health Sciences  
Bethesda, Maryland, USA

## PAST EDITORS

R Adams Cowley, MD  
Deceased  
(JWAEDM 1986–87)

Peter Safar, MD  
International Resuscitation  
Research Center  
University of Pittsburgh  
Pittsburgh, Pennsylvania, USA  
(JWAEDM 1981–85)

Michael Gunderson, REMT-P  
Pinellas County EMS System  
Largo, Florida, USA  
(JPM 1987–88)

## CONSULTING EDITORS

Peter Safar, MD  
International Resuscitation  
Research Center  
University of Pittsburgh  
Pittsburgh, Pennsylvania, USA

Ronald Stewart, MD  
Victoria Hospital  
Halifax, Nova Scotia, Canada

## EDITORIAL BOARD

Jakov Adler, MD  
Shaare Zedec Medical Center  
Jerusalem, Israel

Fritz Ahnefeld, MD  
University of Ulm  
Ulm, Germany

Paul B. Anderson  
Boise, Idaho, USA

Jack Ayres, JD, REMT-P  
University of Texas Health  
Science Center  
Dallas, Texas, USA

Peter Baskett, MD  
Frenchay Hospital  
Bristol, UK

Jeff Clawson, MD  
Salt Lake City Fire Department  
Salt Lake City, Utah, USA

Richard O. Cummins, MD  
University of Washington  
Seattle, Washington, USA

Craig DeAtley, PA-C  
George Washington University  
Medical Center  
Washington, D.C., USA

Wolfgang Dick, MD  
Johannes Gutenberg Universität  
Mainz, Germany

Norm Dinerman, MD  
Eastern Maine Medical Center  
Bangor, Maine, USA

James DuCharme, MD  
Royal Victoria Hospital  
Montréal, Québec, Canada

Eelco Dykstra, MD  
Center for International EMS  
Wiesbaden, Germany

Morgan Fahey, MD, OBE  
Shirley Medical Centre  
Christchurch, New Zealand

Judith Fisher, MD  
British Association  
for Immediate Care  
London, UK

Malcolm Fisher, MD  
Royal North Shore Hospital  
Sydney, Australia

George Foltin, MD  
Bellevue Hospital Center  
New York University Medical  
Center  
New York, New York, USA

Michael Gunderson, REMT-P  
Pinellas County EMS System  
Largo, Florida, USA

S. William A. Gunn, MD  
European Centre for Disaster  
Medicine  
Medical Society of the WHO  
Geneva, Switzerland

Mark S. Johnson  
EMS Section,  
Alaska Dept. Public Health  
Juneau, Alaska, USA

Michael King, REMT  
Acute Care Foundation  
Tampa, Florida, USA

Per Kulling, MD  
Swedish Poison Information  
Centre  
Stockholm, Sweden

John C. Lane, MD  
University of Campinas  
Medical Center  
Sao Paulo, Brazil

Baxter Larmon, EMT-P  
UCLA Medical Center  
Los Angeles, California, USA

Prof. Li Zhong-Hao, MD  
Beijing Emergency Medical  
Center  
Beijing, China

Susan D. McHenry  
EMS Division, Virginia Dept.  
of Health  
Richmond, Virginia, USA

Norman E. McSwain, Jr., MD  
Tulane University Medical Center  
New Orleans, Louisiana, USA

Sergio Magalini, MD  
Universita Cattolica del  
Sacro Cuore  
Rome, Italy

Ronald F. Maio, DO  
University of Michigan  
Medical Center  
Ann Arbor, Michigan, USA

Michael Moles, MD  
Prince Philip Hospital  
Hong Kong University  
Hong Kong

Prof. Bernard Nemitz, MD  
Service d'Aide Médicale  
Urgente Centre Hospitalier  
Regionale et Universitaire  
Amiens, France

Eric Noji, MD  
United States Centers  
for Disease Control  
Atlanta, Georgia, USA

Judy Olson, BSN  
University of Wisconsin–Madison  
Madison, Wisconsin, USA

James O. Page, JD  
Emergency Care Information  
Center  
Carlsbad, California, USA

Paul Paris, MD  
University of Pittsburgh  
Pittsburgh, Pennsylvania, USA

Jiri Pokorny, MD, DrSc  
Post-Graduate Medical School  
Prague, Czech Republic

Lawrence W. Rose, MD  
Bethesda, Maryland, USA

Leonid B. Roshal, MD  
Institute of Pediatrics  
Academy of Medical Sciences  
Moscow, Russia

Sandra M. Schneider, MD  
University of Pittsburgh  
Pittsburgh, Pennsylvania, USA

Victor Semenov, MD  
Reanimatology Institute  
Academy of Medical Sciences  
Moscow, Russia

Carol J. Shanaberger, JD, EMT-P  
Colorado Division of Regulation  
Denver, Colorado, USA

Shao Xiaohong, MD  
Peking Union Medical College  
Chinese Academy of Medical  
Science  
Beijing, China

John Shea, MD  
Loyola University Medical Center  
Maywood, Illinois, USA

Daniel Spaite, MD  
University of Arizona  
Tucson, Arizona, USA

Takashi Ukai, MD  
Senri Critical Care Medical Center  
Osaka, Japan

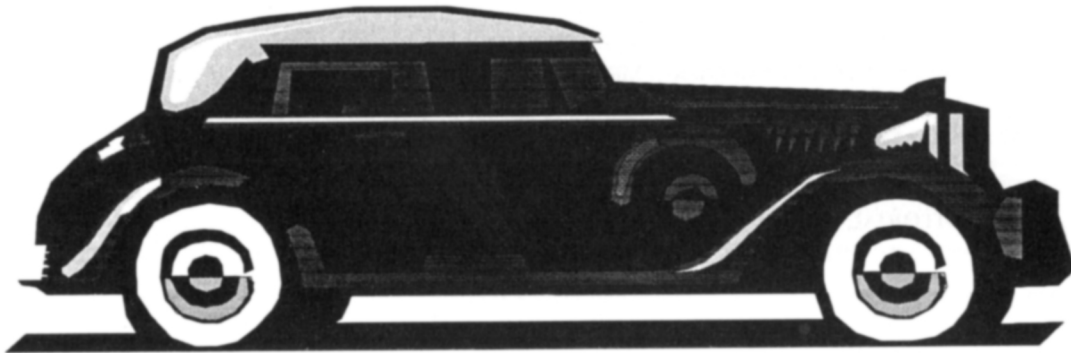
Connie Walleck, RN, MS  
Health Science Center SUNY—  
Syracuse  
Syracuse, New York, USA

Donald Yealy, MD  
Texas A&M University  
Scott and White Memorial  
Hospital  
Temple, Texas, USA

\* formerly the World Association for Emergency and Disaster Medicine (WAEDM)

---

# We're Puttin' on the Ritz . . .



January 6-9, 1994  
Naples, Florida

## ***National Association of EMS Physicians 1994 Winter Meeting***

***The Ritz-Carlton*** is located on the Gulf Coast in beautiful Naples, Florida and offers guests mediterranean-style tranquility with uncompromising personal service.

***Technology***, the first track of the Winter Meeting, will provide attendees with a glimpse of the latest in EMS Technology -- communications, documentation, newest drugs and diagnostics, and More!

***Ethics***, the second track, will delve into those sticky and controversial ethical issues and questions that EMS professionals must face every day -- patient destination and politics, the law, refusals, confidentiality, and More!

***Interaction*** -- The Winter Meeting will continue with the new format that allows and encourages participants to meet up close and personal with faculty and other attendees.

***National EMS Medical Director Course*** will be held on January 4-6, 1994.

***Call Now! Make your reservations at the Ritz by calling  
(813) 598-3300. For meeting information, call the  
NAEMSP office at (800) 228-3677.***



# Advertising Policy and Guidelines

## General Statement

Unlike any other publication dedicated to the delivery of pre-hospital emergency medical services, *Prehospital and Disaster Medicine* (PDM) is a scientifically based, peer-reviewed, medical journal. Its purpose is to stimulate and report the science associated with the delivery of prehospital emergency medical services and the practice of Disaster Medicine. As with all peer-reviewed, scientific journals, all of the content published in *Prehospital and Disaster Medicine* is submitted for review to acknowledged experts in the field. Each reviewer is asked to evaluate each piece submitted for publication using the Guidelines for Scientific Publications.

In this light, it is important to recognize that the readership of *PDM* is quite sophisticated. It is clear that credible, accurate, and correct advertising is attractive to the readers of *PDM*, and that advertising not based on science has little impact. Therefore, it is the policy of the Editorial Office of *PDM*, that all advertising published in the Journal be sound scientifically. Each advertisement submitted for publication will be submitted to careful scrutiny. All ads which do not meet the following guidelines will be returned to the advertisers with suggestions for improvement, and will not be published without resolution of the perceived problems. Consultation to each advertiser can be obtained from the Editorial Office without charge to the advertiser. Early review often will help to enhance the overall quality of an ad, and is available to potential advertisers at any time.

## Guidelines

- 1) Advertisements should be aimed at a sophisticated, medical audience;
- 2) References to well-established facts and concepts enhance the credibility of the ad;
- 3) No claims can be made that cannot be supported scientifically;
- 4) All claims of effectiveness, efficacy, and all comparisons with other products must have appropriate scientific documentation with references provided either within the advertisement or made available on request (a statement thereto must be conspicuous in the substance of the advertisement);

- 5) Every effort must be directed to minimize the likelihood of possible erroneous interpretation of the claims;
- 6) Sensationalism and half-truths are not well-received by the readers and should be avoided. Such efforts actually may detract from the impact of the advertisement.

## Process for Review

- 1) Each advertisement is submitted to the advertising staff of the publisher (JEMS Communications, Inc.);
- 2) Each advertisement being considered for publication is submitted to the Editorial Office for review and comment by the Editor. When potential for controversy is generated by the ad, it is submitted to members of the Editorial Board of the Journal for further review;
- 3) If approved for publication, the advertising staff of the publisher is notified who then, in turn, inform the advertiser;
- 4) If not approved for publication, the critique and suggestions for improvement are returned to the involved member of the advertising staff of the publisher, who in turn notifies the potential advertiser. Often, the Editor will contact the advertiser directly and discuss the issues with the advertiser;
- 5) Revised ads are subjected to the same scrutiny as are all pieces initially submitted;
- 6) All comments received by the Editorial Office relative to a particular advertisement are forwarded promptly to the advertiser for review.

Use of these guidelines and the process used for review add to the credibility of *PDM* and of the product. Use of this policy will produce substantial benefits to all involved.

Your interest in and support of *PDM* is appreciated, and I welcome any suggestions you may have relative to this matter. I solicit your input in any way that can contribute to enhancing the utility and credibility of *PDM*. If you have any questions, please contact me directly at your convenience (608-263-9641).

Marvin L. Birnbaum, MD, PhD  
Editor-in-Chief