

# INFECTION CONTROL & HOSPITAL EPIDEMIOLOGY

VOLUME 28, NUMBER 10

OCTOBER 2007

## SHEA GUIDELINE

- 1121 Raising Standards While Watching the Bottom Line: Making a Business Case for Infection Control •** Eli N. Perencevich, MD, MS; Patricia W. Stone, PhD, MPH, RN; Sharon B. Wright, MD, MPH; Yehuda Carmeli, MD, MPH; David N. Fisman, MD, MPH, FRCP(C); Sara E. Cosgrove, MD, MS

## ORIGINAL ARTICLES

- 1134 Real-Time Polymerase Chain Reaction Detection of Methicillin-Resistant *Staphylococcus aureus*: Impact on Nosocomial Transmission and Costs •** L. O. Conterno, PhD; J. Shymanski, BScN; K. Ramotar, PhD; B. Toye, MD; C. van Walraven, MD; D. Coyle, PhD; V. R. Roth, MD
- 1142 Widespread Environmental Contamination Associated With Patients With Diarrhea and Methicillin-Resistant *Staphylococcus aureus* Colonization of the Gastrointestinal Tract •** John M. Boyce, MD; Nancy L. Havill, MT; Jonathan A. Otter, BSc; Nicholas M. T. Adams, BSc
- 1148 Preventing the Airborne Spread of *Staphylococcus aureus* by Persons With the Common Cold: Effect of Surgical Scrubs, Gowns, and Masks •** Werner E. Bischoff, MD, PhD; Brian K. Tucker, BS; Michelle L. Wallis, BS; Beth A. Reboussin, PhD; Michael A. Pfaller, MD; Frederick G. Hayden, MD; Robert J. Sherertz, MD
- 1155 Selective Use of Intranasal Mupirocin and Chlorhexidine Bathing and the Incidence of Methicillin-Resistant *Staphylococcus aureus* Colonization and Infection Among Intensive Care Unit Patients •** Glenn Ridenour, MD; Russell Lampen, DO; Jeff Federspiel; Steve Kritchevsky, PhD; Edward Wong, MD; Michael Climo, MD
- 1162 An Alternative Scoring System to Predict Risk for Surgical Site Infection Complicating Coronary Artery Bypass Graft Surgery •** N. Deborah Friedman, MBBS, FRACP; Ann L. Bull, PhD; Philip L. Russo, MCLinEpid; Karin Leder, MBBS, FRACP, MPH; Christopher Reid, PhD; Baki Billah, PhD; Silvana Marasco, MBBS, MS, FRACS; Emma McBryde, MBBS; Michael J. Richards, MBBS, FRACP, MD
- 1169 Surgical Site Infection After Surgery to Repair Femoral Neck Fracture: A French Multicenter Retrospective Study •** Jacques Merrer, MD; Emmanuelle Girou, PharmD; Alain Lortat-Jacob, MD; Philippe Montravers, MD; Jean-Christophe Lucet, MD; Groupe de Recherche sur l'Antibioprophylaxie en Chirurgie
- 1175 Risk Factors for and Impact of Infection or Colonization With Aztreonam-Resistant *Pseudomonas aeruginosa* •** Leanne B. Gasink, MD; Neil O. Fishman, MD; Irving Nachamkin, DrPH, MPH; Warren B. Bilker, PhD; Ebbing Lautenbach, MD, MPH, MSCE
- 1181 Decreasing Airborne Contamination Levels in High-Risk Hospital Areas Using a Novel Mobile Air-Treatment Unit •** V. Bergeron, PhD; G. Reboux, PhD; J. L. Poiriot, MD; N. Laudinet, BS
- 1187 Meningitis Following Spinal Anesthesia: 6 Cases in 5 Years •** Lisa Rubin, MD, MPH; Hannah Sprecher, PhD; Ahmed Kabaha, MD; Gabriel Weber, MD; Nava Teitler, MA; Shmuel Rishpon, MD
- 1191 Impact of a Single Plain Finger Ring on the Bacterial Load on the Hands of Healthcare Workers •** Mette Fagernes, RN, Cand.san; Egil Lingaas, MD, PhD; Per Bjark, MD

CONTENTS CONTINUED INSIDE

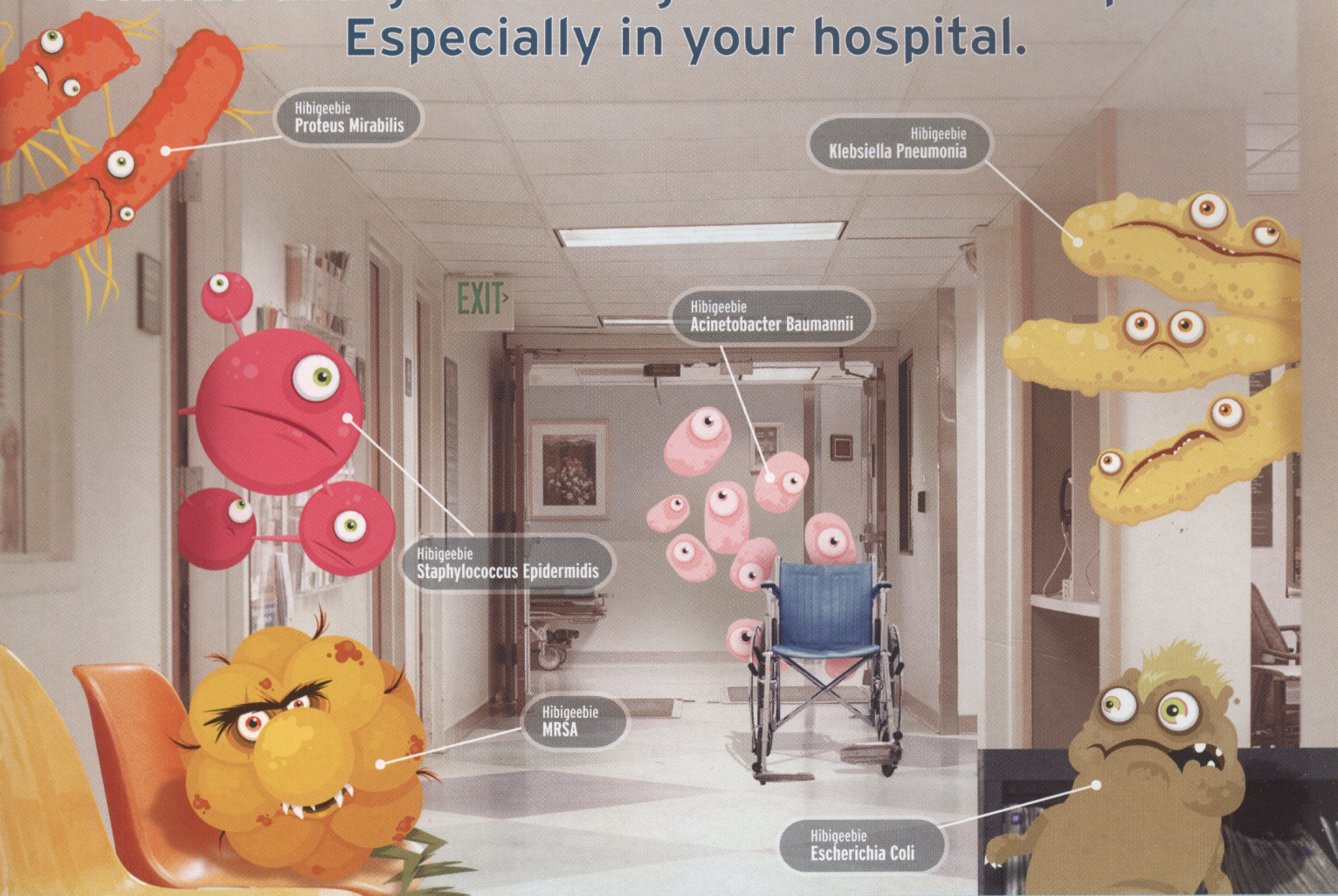


THE OFFICIAL JOURNAL OF THE SOCIETY FOR HEALTHCARE EPIDEMIOLOGY OF AMERICA

THE UNIVERSITY OF CHICAGO PRESS



# Hands and germs hang out in the same places. Especially in your hospital.



Hands are the first, and last, lines of defense against the spread of pathogens. It's not a job for just any antiseptic. The CDC advises that alcohol alone is not appropriate when hands are visibly dirty or contaminated with proteinaceous materials.<sup>1</sup>

## Compare washing with Hibiclens to using other antiseptic solutions like alcohol, iodine and PCMX:

- Broad-spectrum residual action lasts up to 6 hours after washing.<sup>2</sup>
- Efficacy is **not** compromised by contact with organic matter like blood.<sup>3</sup>
- Proprietary formulation is gentler on your skin.<sup>4</sup>
- For 34 years, the standard by which all others are compared.
- Removes dirt and debris leaving hands clean.
- With Hibiclens as your first, and last, wash of the day, you'll have one less thing to worry about.

Kill the Hibigeebies with  
**HIBICLENS®**

Antimicrobial Antiseptic Skin Cleanser



<sup>1</sup>Guideline for Hand Hygiene in Health-Care Settings. Recommendations of the Healthcare Infection Control Practices Advisory Committee and the HICPAC/SHEA/APIC/IDSA Hand Hygiene Task Force. October 25, 2002 / Vol. 51 / No. RR-16. Accessed at: <http://www.cdc.gov/mmwr/PDF/rr/rr5116.pdf> on 18 September 2005. <sup>2</sup>Regent Medical Study #030917-150. <sup>3</sup>Independent Lab Test Time-Kill Study 5 Minutes S. epidermidis ATCC #12228. Protocol #040907-150. <sup>4</sup>PRACS report #R05-0225 and R05-0871. Hibiclens, Hibigeebies, the Hibiclens logo and Mölnlycke are registered trademarks of Mölnlycke Group of companies. Distributed by Mölnlycke Health Care US, LLC, Norcross, Georgia 30092. © 2006 Regent Medical Limited. All rights reserved. 1.800.843.8497 [www.hibigeebies.com](http://www.hibigeebies.com)



# INFECTION CONTROL & HOSPITAL EPIDEMIOLOGY

VOLUME 28, NUMBER 10

OCTOBER 2007

CONTENTS CONTINUED FROM COVER

- 1196 **Surveillance of Occupational Blood and Body Fluid Exposures Among French Healthcare Workers in 2004** • A. G. Venier, MD; A. Vincent, MD; F. L'Hériveau, MD; N. Floret, MD, PhD; H. Sénéchal, PharmD; D. Abiteboul, MD; E. Reyreud; B. Coignard, MD; P. Parneix, MD

## CONCISE COMMUNICATIONS

- 1202 **Role of Acid-Suppressing Medications During a Sustained Outbreak of *Salmonella* Enteritidis Infection in a Long-Term Care Facility** • Anna Bowen, MD; Alexandra Newman, DVM; Concepcion Estivariz, MD; Norene Gilbertson, RN; John Archer, MS; Arjun Srinivasan, MD; Michael Lynch, MD; John Painter, DVM
- 1206 **Emergence of Staphylococcal Cassette Chromosome *mec* Type IV Methicillin-Resistant *Staphylococcus aureus* as a Cause of Ventilator-Associated Pneumonia** • D. Neofytos, MD; B. Kuhn; S. Shen, MD; X. Hua Zhu, MD; D. Jungkind, PhD; P. Flomenberg, MD
- 1210 **Interhospital Comparisons of Coronary Artery Bypass Graft Surgical Site Infection Rates Differ if Donor Sites Are Excluded** • P. L. Russo, MClidEpid; L. Gurrin, PhD; N. D. Friedman, MBBS, FRACP; A. L. Bull, PhD; S. Marasco, MBBS, FRACS; H. Kelly, MBBS, MPH, FAFPHM; C. J. Boardman, MPH; M. J. Richards, MBBS, FRACP
- 1213 **Outbreak of *Acinetobacter baumannii* Bacteremia Related to Contaminated Morphine Used for Patient-Controlled Analgesia** • Hsin-Chun Lee, MD; Nan-Yao Lee, MD; Chia-Ming Chang, MD; Cheng-Yang Chou, MD; Yi-Hui Wu, RN, MPH; Li-Rong Wang, BS; Nai-Ying Ko, RN, PhD; Ching-Chuan Liu, MD, MPH; Wen-Chien Ko, MD

*An Official Publication of the Society for Healthcare Epidemiology of America*

## EDITOR

Suzanne F. Bradley, MD • Ann Arbor, MI

## DEPUTY EDITOR

Carol A. Kauffman, MD • Ann Arbor, MI

## SENIOR ASSOCIATE EDITORS

C. Glen Mayhall, MD • Galveston, TX  
Gina Pugliese, RN, MS • Chicago, IL  
William Schaffner, MD • Nashville, TN

## ASSOCIATE EDITORS

Ebbing Lautenbach, MD, MPH • Philadelphia, PA  
Preeti N. Malani, MD, MSJ • Ann Arbor, MI  
David Weber, MD, MPH • Chapel Hill, NC

## STATISTICS CONSULTANT

Rodney L. Dunn, MS • Ann Arbor, MI

## SECTION EDITOR FOR GUIDELINES, POSITION PAPERS, AND INVITED REVIEWS

Carol Chenoweth, MD • Ann Arbor, MI

## MANAGING EDITOR

Gordon Rudy, PhD, ELS • Chicago, IL

## PAST EDITORS

### *Infection Control*

Richard P. Wenzel, MD, 1980–1990 (vols. 1–11)

### *Infection Control and Hospital Epidemiology*

Richard P. Wenzel, MD, 1991–1992 (vols. 12 and 13)

Michael D. Decker, MD, 1993–2001 (vols. 14–22)

Barry M. Farr, MD, 2002–2004 (vols. 23–25)

William R. Jarvis, MD, 2005–2006 (vols. 26 and 27)

## EDITORIAL ADVISORY BOARD

Miriam Alter, PhD, MD • Atlanta, GA  
Lennox Archibald, MD, FRCP • Alachua, FL  
Hilary Babcock, MD • St. Louis, MO  
Elise M. Beltrami, MD, MPH • Decatur, GA  
David Birnbaum, PhD, MPH • Sidney, British Columbia  
Christian Brun-Buisson, MD • Creteil, France  
John P. Burke, MD • Salt Lake City, UT  
David P. Calfee, MD, MS • New York, NY  
Yehuda Carmeli, MD, MPH • Tel Aviv, Israel  
Sara E. Cosgrove, MD, MS • Baltimore, MD  
Donald E. Craven, MD • Burlington, MA  
Burke A. Cunha, MD • Mineola, NY  
Erika D'Agata, MD, MPH • Boston, MA  
Patch Dellinger, MD • Seattle, WA  
Daniel Diekema, MD • Iowa City, IA  
Charles E. Edmiston, Jr., PhD • Milwaukee, WI  
Theodore C. Eickhoff, MD • Denver, CO  
Martin S. Favero, PhD • Irvine, CA  
Richard A. Garibaldi, MD • Farmington, CT  
Petra Gastmeier, MD • Hanover, Germany  
Dale N. Gerding, MD • Hines, IL  
Donald A. Goldmann, MD • Boston, MA  
Anthony D. Harris, MD, MPH • Baltimore, MD  
David K. Henderson, MD • Bethesda, MD  
Loreen A. Herwaldt, MD • Iowa City, IA  
Peter N. R. Heseltine, MD • San Juan, CA  
Karen Hoffmann, RN, CIC, MS • Chapel Hill, NC  
Janine Jagger, MPH, PhD • Charlottesville, VA  
John A. Jernigan, MD, MS • Atlanta, GA  
James T. Lee, MD, PhD • St. Paul, MN  
L. Clifford McDonald, MD • Atlanta, Georgia  
Allison McGeer, MD • Toronto, Ontario

Leonard A. Mermel, DO, ScM • Providence, RI  
Robert R. Muder, MD • Pittsburgh, PA  
Carlene A. Muto, MD, MS • Pittsburgh, PA  
Joseph M. Mylotte, MD, CIC • Buffalo, NY  
David L. Paterson, MBBS, FRACP • Pittsburgh, PA  
Jan Evans Patterson, MD • San Antonio, TX  
Sindy M. Paul, MD • Yardley, PA  
David A. Pegues, MD • Los Angeles, CA  
Didier Pittet, MD, MS • Geneva, Switzerland  
Michael A. Pfaller, MD • Iowa City, IA  
Gina Pugliese, RN, MS • Chicago, IL  
Isaam Raad, MD • Houston, TX  
Jordi Rello, MD, PhD • Tarragona, Spain  
Manfred L. Rotter, MD, DipBact • Vienna, Austria  
Henning Rüden, MD • Berlin, Germany  
William A. Rutala, PhD, MPH • Chapel Hill, NC  
Lisa Saiman, MD, MPH • New York, NY  
William E. Scheckler, MD • Madison, WI  
Lynne M. Schulster, PhD • Atlanta, GA  
John A. Sellick, DO • Amherst, NY  
Kent Sepkowitz, MD • New York, NY  
Andrew E. Simor, MD • Toronto, Ontario  
Philip W. Smith, MD • Omaha, NE  
Denis W. Spelman, MD • Prahan, Victoria, Australia  
Jeffrey R. Starke, MD • Houston, TX  
Janet E. Stout, PhD • Pittsburgh, PA  
Clyde Thornberry, PhD • Franklin, TN  
William Trick, MD • Chicago, IL  
Antoni Trilla, MD, PhD • Barcelona, Spain  
Robert A. Weinstein, MD • Chicago, IL  
Andreas Widmer, MD, MS • Basel, Switzerland  
Marcus Zervos, MD • Royal Oak, MI

*Infection Control and Hospital Epidemiology* (ISSN 0899-823X) is published monthly by the University of Chicago Press, 1427 East 60th St., Chicago, IL 60637-2954 (<http://www.journals.uchicago.edu/ICHE/>). The editorial offices are in Chicago, Illinois.

## Editorial Office

Communications should be addressed to the Editor, *Infection Control and Hospital Epidemiology*, 1427 E. 60th St, Chicago, IL 60637-2954; (e-mail: [iche@press.uchicago.edu](mailto:iche@press.uchicago.edu); telephone: 773-702-2448, fax: 773-753-4247). Contributors should consult the Information for Authors, which is available at the journal's Web site.

## Advertising

Publication of an advertisement in *Infection Control and Hospital Epidemiology* does not imply endorsement of its claims by the Society for Healthcare Epidemiology of America, by the Editor, or by the University of Chicago. Correspondence regarding advertising should be addressed to the business office in Chicago (see above).

## Permissions

Articles may be copied or otherwise reused without permission only to the extent permitted by Sections 107 and 108 of the U.S. Copyright Law. Permission to copy articles for personal, internal, classroom, or library use may be obtained from the Copyright Clearance Center ([www.copyright.com](http://www.copyright.com)). For all other uses, such as copying for general distribution, for advertising or promotional purposes, for creating new collective works, or for resale, please contact Permissions Coordinator, Journals Division, University of Chicago Press, 1427 E.

60th St., Chicago, IL 60637 USA. Fax: 773-834-3489. E-mail: [journalpermissions@press.uchicago.edu](mailto:journalpermissions@press.uchicago.edu). Articles in the public domain may be used without permission, but it is customary to contact the author.

## Subscriptions

Subscription rates for 2008 are \$164 for individuals and \$386 for institutions. Additional rates for non-US subscribers and reduced rates for fellows, residents, and students are available at [www.journals.uchicago.edu/ICHE](http://www.journals.uchicago.edu/ICHE). Subscription agent for Japan: Kinokuniya Company, Ltd. Individuals have the option to order directly from the University of Chicago Press. Single Copy rates: individuals \$17; institutions \$38.

Please direct subscription inquiries, back-issue requests, and address changes to The University of Chicago Press, Journals Division, P.O. Box 37005, Chicago, IL 60637. Telephone: (773) 753-3347 or toll-free in the United States and Canada (877) 705-1878. Fax: (773) 753-0811 or toll-free (877) 705-1879. E-mail: [subscriptions@press.uchicago.edu](mailto:subscriptions@press.uchicago.edu).

**Postmaster:** Send address changes to *Infection Control and Hospital Epidemiology*, University of Chicago Press, P.O. Box 37005, Chicago, IL 60637-2954.

Periodicals postage paid at Chicago, Illinois, and at an additional mailing office.

Published by the University of Chicago Press, Chicago, IL. © 2007 by The Society for Healthcare Epidemiology of America. All rights reserved. This publication is printed on acid-free paper.



# INFECTION CONTROL & HOSPITAL EPIDEMIOLOGY



IMPROVE THE QUALITY OF YOUR RESEARCH TIME

Activate your online subscription

Take advantage of online-only features and improve the quality of your research time. Search articles, authors, and terms. Two more online services to increase your productivity:

## e-TOC Alerts

e-TOC alerts deliver links to new content via e-mail as soon as each issue is available online. Abstracts and free-access articles are available to subscribers and nonsubscribers; regular full-text articles are available to subscribers and subscribing institutions.

## RSS RSS Feeds

RSS (Really Simple Syndication) is a free, easy, and automatic way to inform you when new journal articles are published. Instead of visiting a journal Web site for new articles, let RSS tell you the moment new articles are posted! Sign up today!



THE UNIVERSITY OF CHICAGO PRESS  
JOURNALS DIVISION  
[www.journals.uchicago.edu](http://www.journals.uchicago.edu)

Despite its diminutive size the MicroCLAVE Neutral Connector can be one of your most powerful allies in the fight against catheter-related bloodstream infections. Neutral displacement and the ability to eliminate heparin flushing promotes better patient outcomes.

**MicroCLAVE®**  
NEUTRAL CONNECTOR



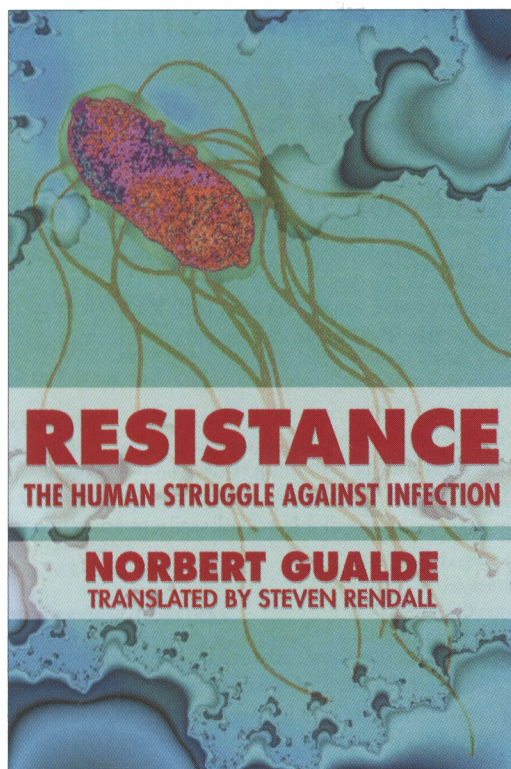
Small is powerful.



ICU Medical, Inc.

951 Calle Amanecer, San Clemente, CA 92673, U.S.A.  
Tel: +1 949 366 2183 • [www.icumed.com](http://www.icumed.com)





## Resistance

*The Human Struggle  
against Infection*

Norbert Gualde

Translated by Steven Rendall

"Resistance provides a detailed and accurate analysis of the critical factors that determine the outcome of this continuous battle, with an emphasis on the evolutionary protection provided by our immune system."

—Baruj Benacerraf, MD,  
Nobel Laureate in Physiology or  
Medicine, 1980

"Resistance sparkles with wit and intelligence, and is a treasure trove of historical facts. . . . It also serves as starting point for serious contemplation of present and future perils."—James S. Goodwin, MD,  
Director, Sealy Center on Aging  
Cloth \$25.00

from

**D**  
**DANA**  
**PRESS**

**Now in Paperback**

## Fatal Sequence

*The Killer Within*

Kevin J. Tracey

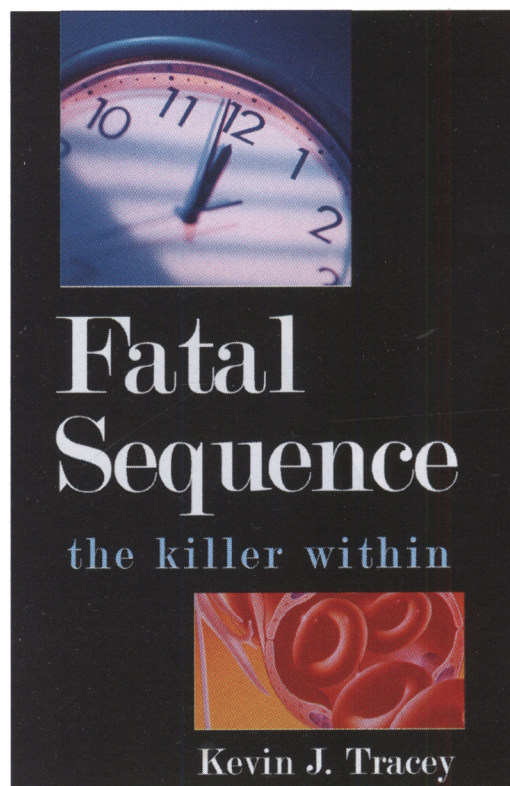
"I enjoyed reading *Fatal Sequence* very much; indeed, I had great difficulty putting it down. . . . Tracey is among the giants in sepsis research.

. . . I recommend *Fatal Sequence* to all involved in the care of patients with sepsis and to patients' families."  
—Robert F. Wilson, *Journal of the American Medical Association*

"Here is the inside scoop on the discovery of tumor necrosis factor and high mobility group proteins, with an ever-convincing argument for the cytokine theory of disease."

—Jerry J. Zimmerman,  
*Critical Care Medicine*

Paper \$12.95



Distributed by the University of Chicago Press  
[www.press.uchicago.edu](http://www.press.uchicago.edu)