

# Cahiers de Psychologie Cognitive Current Psychology of Cognition

---

## Editor

Jean-Paul Caverni (Aix-en-Provence)

## Associate Editors

Ruth Campbell (London)

Helmut Jungermann (Berlin)

Paolo Legrenzi (Milano)

Paul Light (Southampton)

Jean Pailhous (Marseille)

## Managing Editor

Françoise Joubaud (Marseille)

## *Call for Papers*

After having consulted several colleagues in our respective countries, a number of us think that now is an opportune time to begin providing researchers in cognitive psychology (and in the psychology-related cognitive sciences) with a high-standard, international journal simultaneously featuring two types of publication, both essential to the development of research in the field: **short papers** and **target articles with commentaries**. So we decided to create such a journal and call it

## **Cahiers de Psychologie Cognitive Current Psychology of Cognition**

Cahiers de Psychologie Cognitive/Current Psychology of Cognition welcomes contributions to all areas of cognitive psychology, and also considers papers from related cognitive disciplines of psychological relevance.

CPC makes a point of publishing both **short papers** and **target articles with commentaries**.

Papers will be accepted on the basis of their substantial theoretical and empirical contribution to understanding cognitive processes.

**Short papers** will emphasize experimental work, but theoretical or position papers as well as book reviews and debates will be included. CPC will make every effort to publish quickly.

**Target articles** will focus on a significant and controversial contribution which, upon acceptance for publication, will be circulated to a large number of commentators who are invited to provide criticisms and elaboration. The target article, accepted commentaries, and the author's response will appear simultaneously.

Theoretical articles, review articles, advance articles, integrative empirical articles will also be considered.

Six issues of CPC will be published each year (February, April, June, August, October, December).

---

IBHOP, Traverse Charles Susini, 13388 Marseille Cedex 13, France  
Tel: (33) 91.66.00.69 - Fax: (33) 91.61.14.20 - Email: [cpc@frmop11](mailto:cpc@frmop11)

*Think how you think ...*

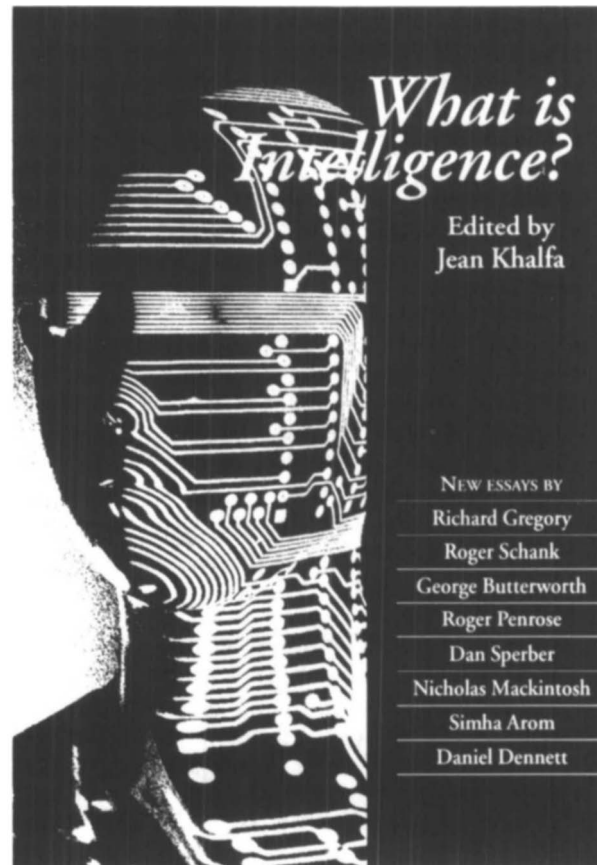
# *What is Intelligence?*

Edited by JEAN KHALFA

How we define intelligence, what it consists in, how it evolved, and how we can enhance it in the future, are all questions addressed by the eight expert contributors to this remarkable book.

The volume originates in the seventh annual series of Darwin College Lectures, delivered in Cambridge in 1992.

*What is Intelligence?* will be of interest to linguists, behavioural biologists, and psychologists, as well as cognitive and brain scientists, and to anyone who wishes to examine the nature and power of human intelligence.



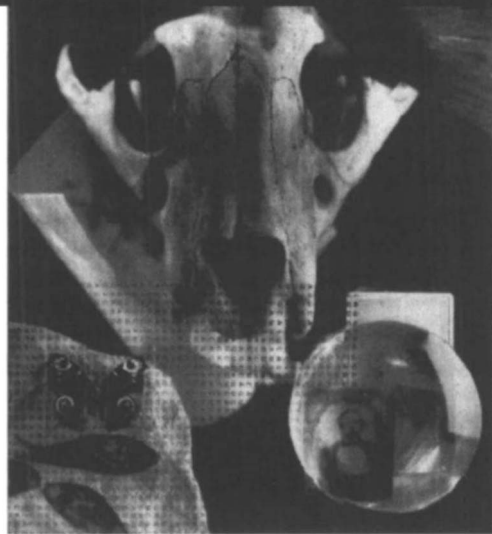
Contributors include SIMHA AROM on musical intelligence, GEORGE BUTTERWORTH on perception in infants, DAN DENNETT on language and intelligence, RICHARD GREGORY on the intelligence of the eye, NICHOLAS MACKINTOSH on animal intelligence, ROGER PENROSE on mathematical intelligence, ROGER SCHANK and LAWRENCE BIRNBAUM on artificial intelligence, and DAN SPERBER on 'understanding verbal understanding'.

£19.95 HB 0 521 43307 X 208 pp.



**CAMBRIDGE**  
UNIVERSITY PRESS

The Edinburgh Building, Cambridge CB2 2RU



## **Darwin Machines and the Nature of Knowledge**

HENRY PLOTKIN

Bringing together evolutionary biology, psychology, and philosophy, Henry Plotkin presents a new science of knowledge, one that traces an unbreakable link between instinct and our ability to know.

As our ability to know our world depends primarily on what we call intelligence, intelligence must be understood as an extension of instinct. Drawing on contemporary evolutionary theory, Plotkin tells us that the capacity for knowledge, which is what makes us human, is deeply rooted in our biology and, in a special sense, is shared by all living things.

The result is nothing less than a three-dimensional theory of our nature, in which all knowledge is adaptation and all adaptation is a specific form of knowledge.

\$24.95 cloth

## **Unified Theories of Cognition**

ALLEN NEWELL

"Ranges authoritatively over 40 years of research in psychology, artificial intelligence and computer science...Lively, lucid and persuasive." —John Fox, *Nature*

"If you want to understand mental architecture, you must read this book." —Philip N. Johnson-Laird, Princeton University

"It is an understatement to say that [this book] is indispensable reading for both established and budding cognitive scientists—and for researchers in the neighboring domains of neuroscience and artificial intelligence as well."

—Herbert A. Simon, Carnegie Mellon University

The William James Lectures \$19.95 paper

AT BOOKSTORES OR FROM

**HARVARD UNIVERSITY PRESS**

CAMBRIDGE, MA 02138 TOLL-FREE: 800 448 2242

# Essential Reading from Cambridge

## Thinking and Deciding

Second Edition

Jonathan Baron

This exciting three-part introduction to current research and theory considers how we think, what keeps us from thinking that way, and how we can improve our thinking and decision making.

1994 510 pp. 43131-X Hardback \$59.95  
43732-6 Paperback \$24.95

## The Poetics of Mind

Figurative Thought, Language, and Understanding

Raymond W. Gibbs Jr.

Establishes important links between the poetic structure of thought and everyday language usage in an attempt to overturn the traditional view that poetic language requires unique linguistic skills.

1994 577 pp. 41965-4 Hardback \$59.95  
42992-7 Paperback \$18.95

## Tools, Language and Cognition in Human Evolution

Edited by Kathleen R. Gibson and Tim Ingold

*"...its subject matter is compelling, its presentation cogent, and its message important. For anyone with even a passing interest in the topic, the reward is worth the effort."*

— Roger Lewin, *New Scientist*

1993 495 pp. 41474-1 Hardback \$69.95

## The Computer User as Toolsmith

The Use, Reuse and Organization of Computer-based Tools  
Saul Greenberg

*"...thoughtfully and carefully written. It is well referenced, with over 100 citations. The author describes in clear and precise detail how he took his initial premises about tools and their reuse, and developed a research and analysis program to test them."*

—G.R. Mayforth, *Computing Reviews*

*Cambridge Series in Human-Computer Interaction 6*

1993 196 pp. 40430-4 Hardback \$44.95

## Toys, Play, and Child Development

Edited by Jeffrey H. Goldstein

Examines how toys and play contribute to the development of language, imagination, and intellectual achievement and how they can effectively be used in child psychotherapy.

1994 175 pp. 45062-4 Hardback \$49.95  
45564-2 Paperback \$14.95

## Self-Awareness in Animals and Humans

Developmental Perspectives

Edited by Sue Taylor Parker, Robert W. Mitchell, and Maria L. Boccia

Focuses on controversies about how to measure self-awareness, which species are capable of self-awareness and which are not, and why.

1994 450 pp. 44108-0 Hardback \$59.95

## Behavioral Expression and Biosocial Bases of Sensation Seeking

Marvin Zuckerman

Explore sensation seeking and the willingness to take risks for the sake of such experience.

1994 560 pp. 43200-6 Hardback \$64.95  
43770-9 Paperback \$32.95

## Street Mathematics and School Mathematics

Terezinha Nunes, David William Carraher, and Analucia Dias Schliemann

Provides a systematic comparison of mathematics used in school and out of school, describing the two forms of activity as different cultural practices that are based upon the same mathematical principles.

*Learning in Doing: Social, Cognitive and Computational Perspectives*

1993 178 pp. 38116-9 Hardback \$49.95  
38813-9 Paperback \$16.95

Now in paperback..

## Metaphors in the History of Psychology

Edited by David E. Leary

*"This contribution gives us much food for thought and whets the appetite for more."*

—Elizabeth Scarborough, *Contemporary Psychology*

416 pp. 42152-7 Paperback \$17.95

## Beyond Adolescence

Problem Behavior and Young Adult Development

Richard Jessor, John E. Donovan, and Frances M. Costa

*"... presents important data and analyses regarding crucial topics of drug use, problem behaviors, and psychosocial development from adolescence into young adulthood and provides some informative tests and expansion of problem behavior theory into young adulthood."*

—Contemporary Psychology

312 pp. 46758-6 Paperback \$16.95

Available in bookstores or from:

**CAMBRIDGE**  
UNIVERSITY PRESS

40 West 20th Street, New York, NY 10011-4211

Call toll free 800-872-7423.

MasterCard/VISA accepted. Prices subject to change

# Behavioral and Brain Sciences

## Instructions for Authors and Commentators

*Behavioral and Brain Sciences* (BBS) is a unique scientific communication medium, providing the service of Open Peer Commentary for reports of significant current work in psychology, neuroscience, behavioral biology or cognitive science. If a manuscript is judged by BBS referees and editors to be appropriate for Commentary (see Criteria below), it is then circulated to a large number of commentators selected (with the aid of systematic bibliographic searches) from the BBS Associateship\* and the worldwide biobehavioral science community, including individuals recommended by the author.

Once the Commentary stage of the process has begun, the author can no longer alter the article, but can respond formally to all commentaries accepted for publication. The target article, commentaries, and authors' response then co-appear in BBS. Continuing Commentary and replies can appear in later issues.

**Criteria for acceptance** To be eligible for publication, a paper should not only meet the standards of a journal such as *Psychological Review* or the *International Review of Neurobiology* in terms of conceptual rigor, empirical grounding, and clarity of style, but it should also offer a **clear rationale for soliciting Commentary**. That rationale should be provided in the author's covering letter, together with a list of suggested commentators.

A paper for BBS can be (i) the report and discussion of empirical research that the author judges to have broader scope and implications than might be more appropriately reported in a specialty journal; (ii) an unusually significant theoretical article that formally models or systematizes a body of research; or (iii) a novel interpretation, synthesis, or critique of existing experimental or theoretical work. Occasionally, articles dealing with social or philosophical aspects of the behavioral and brain sciences will be considered.

The service of Open Peer Commentary will be primarily devoted to original unpublished manuscripts. However, a recently published book whose contents meet the standards outlined above may also be eligible for Commentary. In such a BBS Multiple Book Review, a comprehensive, article-length précis by the author is published together with the commentaries and the author's response. In special cases, Commentary will also be extended to a position paper or an already published article dealing with particularly influential or controversial research. Submission of an article implies that it has not been published or is not being considered for publication elsewhere. Multiple book reviews and previously published articles appear by invitation only. **The Associateship and professional readership of BBS are encouraged to nominate current topics and authors for Commentary.**

In all the categories described, the decisive consideration for eligibility will be the desirability of Commentary for the submitted material. Controversiality *simpliciter* is not a sufficient criterion for soliciting Commentary: a paper may be controversial simply because it is wrong or weak. Nor is the mere presence of interdisciplinary aspects sufficient: general cybernetic and "organismic" disquisitions are not appropriate for BBS. Some appropriate rationales for seeking Open Peer Commentary would be that: (1) the material bears in a significant way on some current controversial issues in behavioral and brain sciences; (2) its findings substantively contradict some well-established aspects of current research and theory; (3) it criticizes the findings, practices, or principles of an accepted or influential line of work; (4) it unifies a substantial amount of disparate research; (5) it has important cross-disciplinary ramifications; (6) it introduces an innovative methodology or formalism for consideration by proponents of the established forms; (7) it meaningfully integrates a body of brain and behavioral data; (8) it places a hitherto dissociated area of research into an evolutionary or ecological perspective; etc. In order to assure communication with potential commentators (and readers) from other BBS specialty areas, **all technical terminology must be clearly defined or simplified, and specialized concepts must be fully described.**

**Note to commentators** The purpose of the Open Peer Commentary service is to provide a concentrated constructive interaction between author and commentators on a topic judged to be of broad significance to the biobehavioral science community. Commentators should provide substantive criticism, interpretation, and elaboration as well as any pertinent complementary or supplementary material, such as illustrations; all original data will be refereed in order to assure the archival validity of BBS commentaries. Commentaries and articles should be free of hyperbole and remarks *ad hominem*.

**Style and format for articles and commentaries** Target articles must not exceed 14,000 words (and should ordinarily be considerably shorter); commentaries should not exceed 1,000 words, including references. Spelling, capitalization, and punctuation should be consistent within each article and commentary and should follow the style recommended in the latest edition of *A Manual of Style*, The University of Chicago Press. It may be helpful to examine a recent issue of BBS.

All submissions must include an indexable title, followed by the authors' names in the form preferred for publication, full institutional addresses, and electronic mail addresses. Target article authors must also provide numbered subheads to facilitate cross-reference by commentators. **Two abstracts**, one of 100 and one of 250 words, should be submitted with every target article. The shorter abstract will appear one issue in advance of the article; the longer one will be circulated to potential commentators and will appear with the printed article. A list of 5–10 keywords should precede all target article texts. Notes, acknowledgments, appendices, and references should be grouped at the end of the target article or commentary.

**Illustrations:** Tables and figures (i.e., photographs, graphs, charts, or other artwork) should be numbered consecutively. Every table should have a title; every figure, a caption. At least one reference in the text must indicate the appropriate locations. (For sizes, see below.)

**References:** Bibliographic citations in the text must include the author's last name and the date of publication and may include page references. Complete bibliographic information for each citation should be included in the list of references. Examples of correct style are: Brown (1973); (Brown 1973); (Brown 1973; 1978); (Brown 1973; Jones 1976); (Brown & Jones 1978); (Brown et al. 1979). References should be typed on a separate sheet in alphabetical order in the style of the following examples. **Do not abbreviate journal titles.**

Kupfermann, I. & Weiss, K. (1978) The command neuron concept. *Behavioral and Brain Sciences* 1:3–39.

Dunn, J. (1976) How far do early differences in mother-child relations affect later developments? In: *Growing points in ethology*, ed. P. P. G. Bateson & R. A. Hinde. Cambridge University Press.

Bateson, P. P. G. & Hinde, R. A., eds. (1976) *Growing points in ethology*. Cambridge University Press.

**Preparation of the manuscript** The original, **double-spaced** target article plus **eight single-spaced, double-sided** copies must be submitted. The entire manuscript, *including notes and references*, must be typed **double-spaced** (1/4-inch space between lines) on 8 1/2 by 11 inch paper, with margins set to 70 characters per line (not "justified") and 25 lines per page, and should not exceed 50 pages. Pages should be numbered consecutively. Commentators should send their original plus two copies. It will be necessary to return manuscripts for retyping if they do not conform to this standard.

Each table and figure should be submitted on a separate page, not interspersed with the text. Tables should be typed to conform to BBS style. Figures should be ready for photographic reproduction; they cannot be redrawn by the printer. Charts, graphs, or other artwork should be done in black ink on white paper and should be drawn to occupy a standard area of 8 1/2 by 11 or 8 1/2 by 5 1/2 inches before reduction. Photographs should be glossy black-and-white prints, 8 by 10 inch enlargements are preferred. All labels and details on figures should be clearly printed and large enough to remain legible even after a reduction to half size. It is recommended that labels be done in transfer type of a sans-serif face such as Helvetica.

Send all submissions, plus a disk (IBM-compatible if possible), to: Stevan Harnad, Editor, Behavioral and Brain Sciences, 20 Nassau St., Suite 240, Princeton, NJ 08542. **Electronic mail:** [harnad@princeton.edu](mailto:harnad@princeton.edu) or [harnad@pucc.bitnet](mailto:harnad@pucc.bitnet). *In case of doubt as to appropriateness for BBS commentary, authors should write to the editor before submitting eight copies.*

**Editing** The publishers reserve the right to edit and proof all articles and commentaries accepted for publication. Authors of articles will be given the opportunity to review the copyedited manuscript and page proofs. Commentators will be asked to review copyediting only when changes have been substantial; commentators will not see proofs. Both authors and commentators should notify the editorial office of all corrections within 48 hours or approval will be assumed.

Authors of target articles receive 50 offprints of the entire treatment, and can purchase additional copies. Commentators will also be given an opportunity to purchase offprints of the entire treatment.

\*Individuals interested in serving as BBS Associates are asked to write to the editor.

## To appear in Volume 17, Number 4 (1994)

Offprints of the following forthcoming BBS treatments can be purchased for educational purposes if they are ordered well in advance. For ordering information, please write to Journals Department, Cambridge University Press, 40 West 20th Street, New York, NY 10011.

### **Reintroducing group selection to the human behavioral sciences**

**David Sloan Wilson, State University of New York at Binghamton, and Elliott Sober, University of Wisconsin**

Biology and the human sciences treat social groups as adaptive units, similar to individuals in their functional organization. We review the growing recent literature on group selection, and its implications for human evolutionary biology. To replace the gene-centered approach in biology and methodological individualism in the human sciences natural selection should be viewed as a hierarchical process.

**With Commentary from** J Alroy & A Levine; CL Brace; DT Campbell & JB Gatewood; JF Crow; R Dawkins; DC Dennett; LA Dugatkin; RH Frank; DL Hull; EA Lloyd; GF Miller; A Rapoport; EA Smith; and others.

### **Toward a theory of human memory: Data structures and access processes**

**Michael S. Humphreys, Janet Wiles, and Simon Dennis, University of Queensland**

"What is the computation performed by the human memory system?" We specify the inputs and outputs of 10 tasks used in human memory experiments and the data structures and access processes needed to map the inputs onto outputs. This multidimensional task classification suggests new experiments, provides a starting point for a cognitive modeling, and clarifies a number of theoretical disputes.

**With Commentary from** TL Clarke; RM Golden; RL Greene; RL Lewis; K Murnane; DJ Murray; IJ Myung; M Oscar-Berman; SA Sloman; R Sun; and others.

### **Multiple book review of *Beyond modularity: A developmental perspective on cognitive science***

**Annette Karmiloff-Smith, Cognitive Development Unit, Medical Research Council**

*Beyond Modularity* attempts a synthesis of Fodor's anticonstructivist nativism and Piaget's antinativist constructivism. "Representational Redescription" is the hypothesized process by which information in a cognitive system becomes progressively explicit knowledge to that system. Development thus involves two complementary processes of progressive modularization and increasing explicitation.

**With Commentary from** P Bloom & J Wynn; MA Boden; T Dartnall; B de Gelder; M Donald; S Goldin-Meadow & MW Alibali; S Ohlsson; DR Olson; SR Quartz & TJ Sejnowski; TR Shultz; PD Zelazo; and others.

### **Among the articles to appear in forthcoming issues of BBS:**

H Rachlin, "Self-control: Beyond commitment"

WK Wilkins & J Wakefield, "Brain evolution and neurolinguistic preconditions"

"Controversies in Neuroscience: II" (Neural transplantation)

"Controversies in Neuroscience: III" (G-Protein receptors in the retina and brain)

"Controversies in Neuroscience: IV" (Motor learning and synaptic plasticity in the cerebellum)

**CAMBRIDGE**  
UNIVERSITY PRESS



0140-525x(199409)17:3;1-0