

A NEW JERUSALEM ‘AT THE ENDS OF THE EARTH’: INTERPRETING CHARLES THOMAS’S EXCAVATIONS AT IONA ABBEY 1956–63

Ewan Campbell and Adrián Maldonado

Ewan Campbell, School of Humanities, University of Glasgow, Glasgow G12 8QQ, UK.
Email: ewan.campbell@glasgow.ac.uk

Adrián Maldonado, National Museum of Scotland, Chambers Street, Edinburgh EH1 1JF, UK.
Email: a.maldonado@nms.ac.uk

Iona was a major European intellectual and artistic centre during the seventh to ninth centuries, with outstanding illustrated manuscripts, sculpture and religious writings produced there, despite its apparently peripheral location ‘at the ends of the earth’. Recent theological discourse has emphasised the leading role of Iona, and particularly its ninth abbot, Adomnán, in developing the metaphor of the earthly monastery as a mirror of heavenly Jerusalem, allowing us to suggest a new appreciation of the innovative monastic layout at Iona and its influence on other monasteries in northern Britain. The authors contend that the unique paved roadway and the schematic layout of the early church, shrine chapel and free-standing crosses were intended to evoke Jerusalem, and that the journey to the sacred heart of the site mirrored a pilgrim’s journey to the tomb of Christ. The key to this transformative understanding is Charles Thomas’s 1956–63 campaign of excavations on Iona, which this article is publishing for the first time. These excavations were influential in the history of early Christian archaeology in Britain as they helped to form many of Thomas’s ideas, later expressed in a series of influential books. They also revealed important new information on the layout and function of the monastic complex, and produced some unique metalwork and glass artefacts that considerably expand our knowledge of activities on the site. This article collates this new information with a re-assessment of the evidence from a large series of other excavations on Iona, and relates the results to recent explorations at other Insular monastic sites.

Keywords: early monasticism; coenobitic monastery; Christianity; archaeology; ecclesiastical studies; Charles Thomas

INTRODUCTION

The questions of how and why early medieval monasteries were organised have been a subject of intense debate amongst archaeologists, historians and theologians. This article seeks to throw new light on these questions through a detailed discussion of the early monastery on Iona, one of the most important ecclesiastical centres of northern Europe, which, despite its apparently remote location, played a leading role in intellectual life during the period after its foundation by the Irish monk Columba (known in Gaelic as *Colum Cille*, the ‘dove of the Church’) around AD 563.

In early Christianity Jerusalem was of central importance not only as the site of key incidents in the life of Jesus Christ, and as the contemporary site of the holy places and relics associated with his life, but also as a symbol for the ‘New Jerusalem’ of heavenly salvation.¹ While this concept of a world view that permeates theological and art historical discourse has been widely discussed, it has not previously been applied in an archaeological context. Iona is one of the key places where it is possible to investigate the application of this idea to the physical layout and monumentalisation of a monastery.

The writings of Abbot Adomnán on Jerusalem give us a unique insight into the world view of Insular ecclesiastics at the end of the seventh century, and enable us to compare these ideas with the archaeological evidence for Iona. The nexus of novel practices that we can see developing at this time, embracing ideas of monastic enclosure, pilgrimage, the cult of saintly relics and their enshrinement, the creation of lavishly decorated illustrated manuscripts, new mortuary practices and monumentalisation through sculpture, represent a key shift in religious praxis. Understanding how these practices were embodied on the ground is crucial to our appreciation of other early monasteries, many of which have been investigated by archaeologists in recent years. The large-scale investigations on Iona carried out by Charles Thomas from 1956 to 1963 were central in developing his influential ideas on the evolution of monastic practice, particularly with reference to the monastic *vallum* or enclosure, but they were never published. This article builds on the data from these excavations, reconstructed from recently recovered excavation archives, supplements them with new radiocarbon dates and integrates the findings with numerous other excavations on the site, totalling around 150 separate trenches. Rather than a conventional excavation report, this article seeks to integrate the main results of the excavations with new ideas on early Insular monasticism put forward by scholars such as Éamonn Ó Carragáin, Tomás Ó Carragáin, Thomas O’Loughlin and David Jenkins.²

UNDERSTANDING EARLY MEDIEVAL INSULAR MONASTERIES

The question of how early medieval Insular monasteries were conceived in the minds of early ecclesiastics, and how they were laid out and organised on the ground, has received much attention in recent years from historians, archaeologists and theologians, with the sacred topography of the Columban monastery on Iona playing a key role in many of these discussions. A number of different research questions intersect (and entangle) in these studies, with vigorous debate around issues of regional difference, the origins and trajectories of monastic organisation in a European context, definitions of monasticism and the proposed ‘proto-urban’ functions of some ecclesiastical centres.

With respect to the issue of regionality, there is a long tradition of seeing monasteries in the Celtic-speaking areas as being differently organised from other Insular monasteries, particularly in their characteristically circular enclosures.³ This characteristic feature has been entangled with notions of a ‘Celtic Church’ being somehow separate from mainstream Christianity, an idea that has itself been robustly disputed, though the concept of a Celtic Church nevertheless retains a strong non-academic following.⁴ The notion

1. O’Loughlin 2010.

2. Ó Carragáin 1995; O’Loughlin 2007; Jenkins 2010; Ó Carragáin 2010a.

3. Swan 1985, 1994; Foot 1990; Aitchison 1994; Blair 2005.

4. Hughes 1981; Davies 1992; Ó Floinn 2012.

of a uniquely Irish monastic layout pattern consisting of concentric circular enclosures, based on sites such as Nendrum, has explicitly influenced interpretations of Scottish sites such as Whithorn and Dunning, even where there is little archaeological evidence to support the reconstructions.⁵ The concomitant idea that the Irish Church was organised on an abbatial, rather than episcopal, basis has been effectively undermined by historians, though differences of interpretation remain.⁶ Another supposedly distinctive feature of the pre-Norse Irish monastery was its 'proto-urban' character, first proposed by Charles Doherty, but the concept has been critiqued for Ireland, and more widely.⁷ However, there is no doubt that Irish monasteries played a significant role in economic development, even in the pre-Norse period, with evidence of large-scale production of both ecclesiastical and secular objects.⁸

The question of how to define early medieval monasticism and how to recognise a monastic, as opposed to other types of ecclesiastical settlement – or, indeed, secular settlement – has exercised archaeologists in particular, and different defining elements have been proposed.⁹ Faced with sites without historical documentation, such as Portmahomack, Flixborough and Brandon, some have been reluctant to characterise these as monastic, though others are less sceptical about the extent of undocumented monasticism.¹⁰ However, it is increasingly being realised, especially in Ireland, that the indiscriminate use of the term 'monastic' for all ecclesiastical settlements is not helpful. Study of the historical sources and the terminology used of their officials has shown that ecclesiastical settlements had a mixture of monastic, episcopal, pastoral and economic functions.¹¹ There are also difficulties in distinguishing in the sources what some writers term 'para-monastic' dependants from 'real' monks, both termed *manaig* in the sources.¹² There is a growing acceptance that there was a range of types of site, including monastic possessions with proprietorial, hereditary and parochial churches or burial grounds, as well as hybrid sites such as the recently recognised group of non-ecclesiastical 'cemetery settlements'.¹³ The theological basis for enclosure has also been much discussed – from Doherty, who proposed the monastery as a Levitical 'city of refuge' (*civitas refugii*), to MacDonald, who applied the concept of increasing holiness of concentric enclosures to Iona, and most fully by theologians O'Loughlin and Jenkins, who centre their work on Iona and the writings of Adomnán.¹⁴ All these authors suggest that Adomnán, Columba's biographer and the ninth abbot of Iona, was a key figure in developing the notion of a monastery as a metaphor for Jerusalem, both as it had been in the past (as the site of incidents in the life of Jesus), the present (the layout, shrines, relics and rituals associated with the Church of the Holy Sepulchre) and the future (salvation in the heavenly Jerusalem). Ó Carragáin also sees Iona as the key site in developing and transmitting these ideas to Ireland.¹⁵

5. Gittos 2002. Nendrum: Lawlor 1925; McErlean and Crothers 2007, fig 12.24. Whithorn: Hill 1997, 30–5, fig 2.6. Dunning: Cook 2008.

6. Sharpe 1984; Etchingham 1999; Márkus 2017, 134–8.

7. Doherty 1985; Scull 1997; Swift 1998; Valante 1998; Etchingham 2000, 2011.

8. Mytum 1992; Stevens 2017.

9. Henry 1957; Herity 1984; Carver 2009.

10. Foot 1990; Webster and Backhouse 1991, 81–8; Blair 2005; Loveluck 2007; Carver *et al* 2016.

11. Etchingham 2011.

12. Sharpe 1984; discussed extensively in Etchingham 2011.

13. Ó Carragáin 2009; Ó Carragáin 2010b, 218.

14. Doherty 1985; MacDonald 2001; O'Loughlin 2007; Jenkins 2010.

15. Ó Carragáin 2010b.

One major problem with much of this discussion is that it has largely been based on literary rather than archaeological evidence, as so few sites had been excavated to a great enough extent to make ground-truthing meaningful. However, in recent years there has been a great expansion in our knowledge of early ecclesiastical sites, especially those in northern Britain, with the full publication of excavations at Portmahomack, Whithorn, Hoddom, Inchmarnock, the Isle of May, St Ninian's Isle, Monkwearmouth/Jarrow and Glastonbury.¹⁶ In Ireland, Tomás Ó Carragáin's magisterial work on early Irish churches provides a comprehensive corpus of comparative material, and can be supplemented by recent work on enclosures in Donegal by the Bernician Research Group and summaries of more recent work.¹⁷ It is in this context that Charles Thomas's excavations of 1956–63 on Iona have particular relevance, especially as the detailed documentary evidence leaves no doubt that Iona was indeed a coenobitic monastery rather than another kind of ecclesiastical site. The results of these excavations are interpreted and their significance explained here, with the full details available elsewhere.¹⁸

IONA: THE BACKGROUND

Although well connected by sea routes that brought goods from as far as the Mediterranean, early medieval monks considered Iona to be as far from Jerusalem, the conceptual centre of their world, as it was possible to be, lying, as they described Iona, 'at the edge of the Ocean' and 'at the limit beyond which no-one dwells'.¹⁹ This perceived remoteness was important to early ecclesiastics, as their mission to this remote outpost could be presented as signifying the triumph of Christianity over the whole of the known habitable world.²⁰ The surviving products of Iona include decorative sculpture, illustrated manuscripts and literary works. Iona has the largest collection of early medieval sculptured stone monuments in Britain and, in the free-standing high crosses of St John and St Martin, some of the outstanding European sculpture of the period. It has been proposed that Iona was the origin of the ringed cross, perhaps the most iconic of 'Celtic' artefacts.²¹ Illustrated manuscripts were also produced there: the *Cathach* is one of the oldest surviving Insular manuscripts, probably written in Columba's own hand; the magnificently decorated *Book of Kells* is widely considered to be an Iona product; and it has been argued that the *Book of Durrow* may also have been made on Iona.²² The decoration of the manuscripts and sculpture shows an explosion of creativity here in the period around the eighth century. Unlike in Continental Europe, there was little investment in stone architecture before the Romanesque period, with most church buildings being of organic materials. However, Ó Carragáin has suggested that St Columba's chapel on Iona could be the proto-type

16. Hill 1997; Cramp 2005; Lowe 2006, 2008; James and Yeoman 2008; Barrowman 2011; Gilchrist and Green 2015; Carver *et al* 2016.

17. Ó Carragáin 2010b; Corlett and Potterton 2010, 2014; O'Brien *et al* 2014; O'Brien and Adams 2016.

18. Campbell and Maldonado 2016.

19. Sharpe 1995, 233; O'Loughlin 1997, 17–22; Campbell 2007, 2019; Scully 2007, 219.

20. Scully 2005.

21. RCAHMS 1982, 18; Fisher 2001, 15.

22. Henderson 1987; Herity and Breen 2002; Meehan 2012; Gifford Charles-Edwards, pers comm, 2004.

of other stone-built shrine chapels with *antae*, possibly dating to as early as the mid-eighth century.²³

While the influence of Iona as an important locus for the development of the Insular art style within Britain and Ireland is generally acknowledged, the island's wider significance in terms of discussions of European art have tended to be sidelined and characterised as a peripheral dead-end.²⁴ However, the intellectual products of Iona were widely known throughout north-western Europe and recent scholarship has emphasised the role of Adomnán, the ninth abbot of Iona, especially in developing ideas of the monastery as an earthly manifestation of the heavenly Jerusalem in his *De Locis Sanctis*, and in his *Vita Columbae*, both written on Iona in the late seventh century.²⁵ O'Loughlin has argued strongly that *De Locis Sanctis* had significant influence throughout northern Europe, both in itself and through Bede's shortened version of the text.²⁶ This work was not merely a geographical guide, but a sophisticated discourse on scriptural exegesis that grappled with the problems raised by discrepancies among the Gospels. It also gave detailed descriptions of the various structures around the tomb of Christ, including one of the earliest ground plans of buildings from the medieval period. This article will suggest that this was influential in trying to establish a schematic norm for church layouts. Adomnán's best known work today, the *Vita Columbae*, gives a great deal of detail of daily life on Iona in the later seventh century, more than any other contemporary saint's life.²⁷ There have been several previous attempts to relate the elements found in the *Vita* to the archaeological remains, though these were all undertaken without access to the results of Thomas's extensive excavations.²⁸ A further product that has been attributed by some to Iona is the early eighth-century *Collectio Canonum Hibernensis*, which was the first attempt to codify church law into one coherent format and was widely distributed in northern Europe in the eighth and ninth centuries.²⁹ Jenkins and others have argued that it was the biblical model of the Temple of Ezekiel at Jerusalem that influenced Irish views on monastic layout. While the authors accept that this model was important in the form of church buildings and theological discourse, it will be argued below that the layout of the structures associated with the Church of the Holy Sepulchre was a more influential model at Iona.³⁰ Iona was also one of the earliest monasteries in Europe to produce annals – yearly accounts of major events – with the putative 'Iona Chronicle' forming the earliest strand of the 'Chronicle of Ireland' contained within the *Annals of Ulster* and *Annals of Tigernach*.³¹ These annalistic entries were contemporary from at least the mid-seventh century, and possibly as early as the late sixth, again giving a unique insight into events on and around Iona.³² This unusual abundance of historical documentation makes Iona an ideal site to investigate how theoretical concepts of monastic layout were embodied in the actual archaeology of a site, something not possible at any other contemporary site.

23. Ó Carragáin 2010a, 78.

24. Stalley 1990; Campbell 2019.

25. Sharpe 1995; O'Loughlin 2007; Jenkins 2010; Ó Carragáin 2010a; Wooding 2010.

26. O'Loughlin 2007, 175–203; see also Aist 2019.

27. Sharpe 1995, 99.

28. Crawford 1933; MacDonald 1984, 1997, 2001; Hamlin 1987; Sharpe 1995.

29. Jenkins 2010, 142; Flechner 2014.

30. For example, Ó Carragáin 2010a, 47.

31. Bannerman 1974; Grabowski and Dumville 1984.

32. Charles-Edwards 2006, 8, 58; Evans 2010, 172–9.

Despite its undoubted importance, Iona has been poorly treated by archaeology, with numerous *ad hoc* excavations of varying quality and degree of publication. In particular, a series of excavations carried out by the late Charles Thomas from 1956 to 1963 remained mainly unpublished, with only brief interim notices and an account of the excavation on Tòrr an Aba giving any indication of what had been found.³³ Many other interventions have been the result of the restoration of the Benedictine monastic buildings from the late nineteenth to mid-twentieth century, later modifications to these buildings, which are a living and working environment for the Iona Community, and to cater for the large tourist audience. O'Sullivan has rightly criticised this situation, stressing that there has been no research programme associated with the work and that the small-scale nature of these interventions has precluded any understanding of structural development and chronology.³⁴ This article is an attempt to rectify part of the situation by analysing the results of Thomas's excavations for the first time, integrating the results with other monastic excavations, and developing new ideas on monastic organisation.

Charles Thomas (1928–2016) was one of the leading figures in the development of early medieval, and especially early Christian, archaeology, though his interests were exceptionally wide-ranging.³⁵ His seminal books include *The Early Christian Archaeology of North Britain, Britain and Ireland in Early Christian times AD 400–800* and *Christianity in Roman Britain to AD 500*.³⁶ In these books the Iona excavations can be seen to have influenced his thinking on subjects such as the layout of monasteries, shrines and the cult of relics to an extent that was not apparent until the archives were investigated. Professor Thomas, with typical generosity, enthusiastically supported the authors' publication of these excavations, providing the authors with finds, plans, diaries and other archive material, but sadly died just as the first phase of publication was completed and so was unable to comment on the authors' readings of the evidence. The authors have also consulted extensively with the surviving members of Thomas's team, who were able to contribute verbal and photographic evidence.

THE SETTING OF THE EARLY MONASTERY

Iona Abbey (NGR NM 2868 2452) is situated on the eastern side of Iona, a small island lying off the western coast of Mull, in the Inner Hebrides of Scotland (fig 1). The abbey lies on raised beach deposits of the Late Devensian period, here at an elevation of around 20m OD. The medieval abbey buildings occupy a fairly flat-lying part of the terrace, but the ground rises to the north west and includes a rocky knoll, Tòrr an Aba, a key place in the interpretation that follows that lies just west of the abbey buildings, and another lower rock outcrop in the adjoining Reilig Odhráin graveyard. Towards the west of the site there is a rocky cliff bounding more hilly terrain, Cnoc nan Càrnan; unusually for monastic sites, which are normally located on flat-lying ground, this section of upland lies within the enclosed area (fig 2). These rocks are the easternmost extent of the Lewisian basement gneisses that form most of the bedrock of the island. The natural deposits of the raised beach consist of orange sands and gravels, sometimes with decayed granite boulders, which

33. Fowler and Fowler 1988.

34. O'Sullivan 1999.

35. Thomas 2012; Driscoll 2017; Campbell and Maldonado 2019.

36. Thomas 1971a, 1971b, 1981.

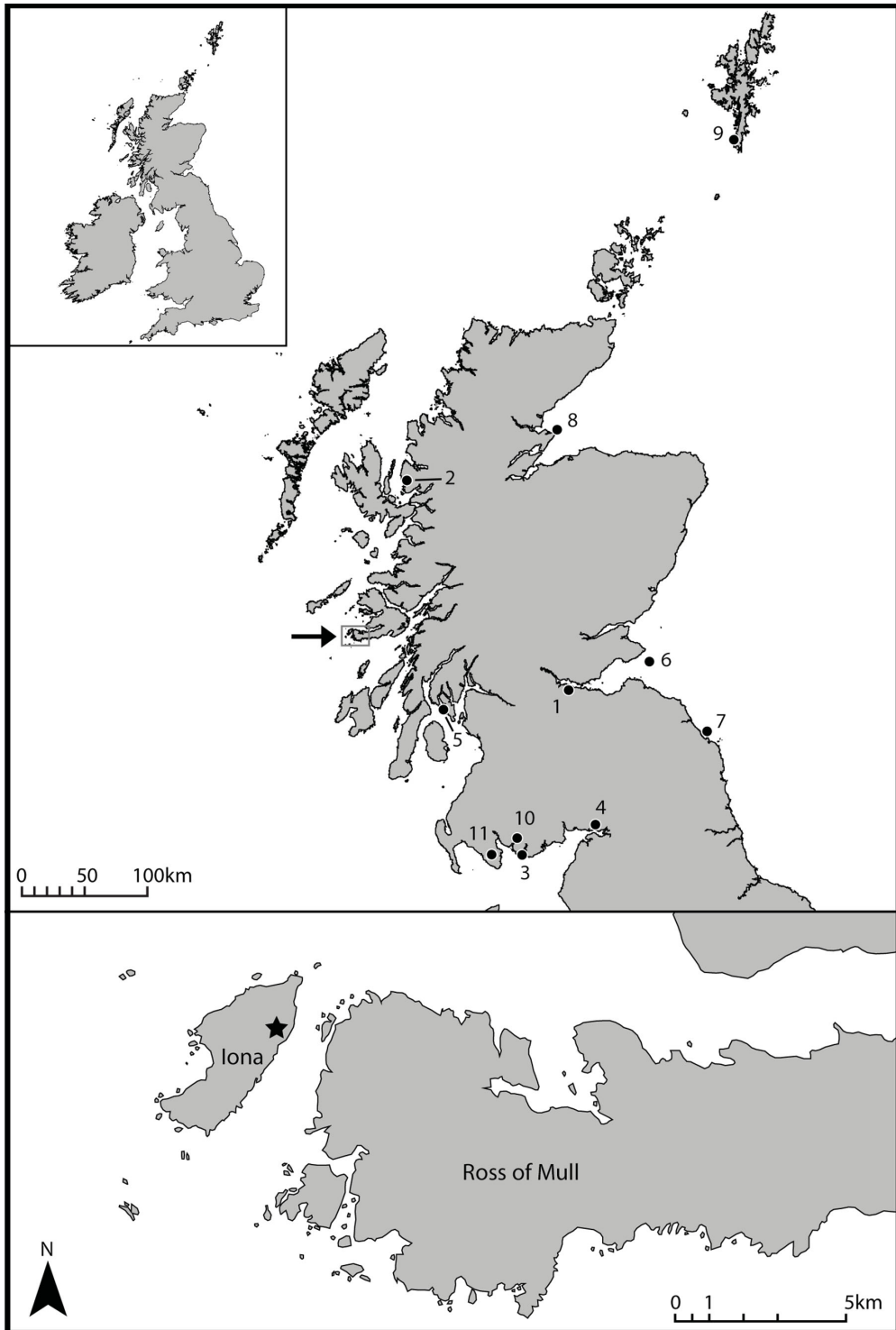


Fig 1. Location of Iona Abbey (starred) and other sites mentioned. 1) Abercorn, 2) Applecross, 3) Ardwall, 4) Hoddom, 5) Inchmarnock, 6) Isle of May, 7) Lindisfarne, 8) Portmahomack, 9) St Ninian's Isle, 10) Trusty's Hill, 11) Whithorn. *Source:* Heather Christie.

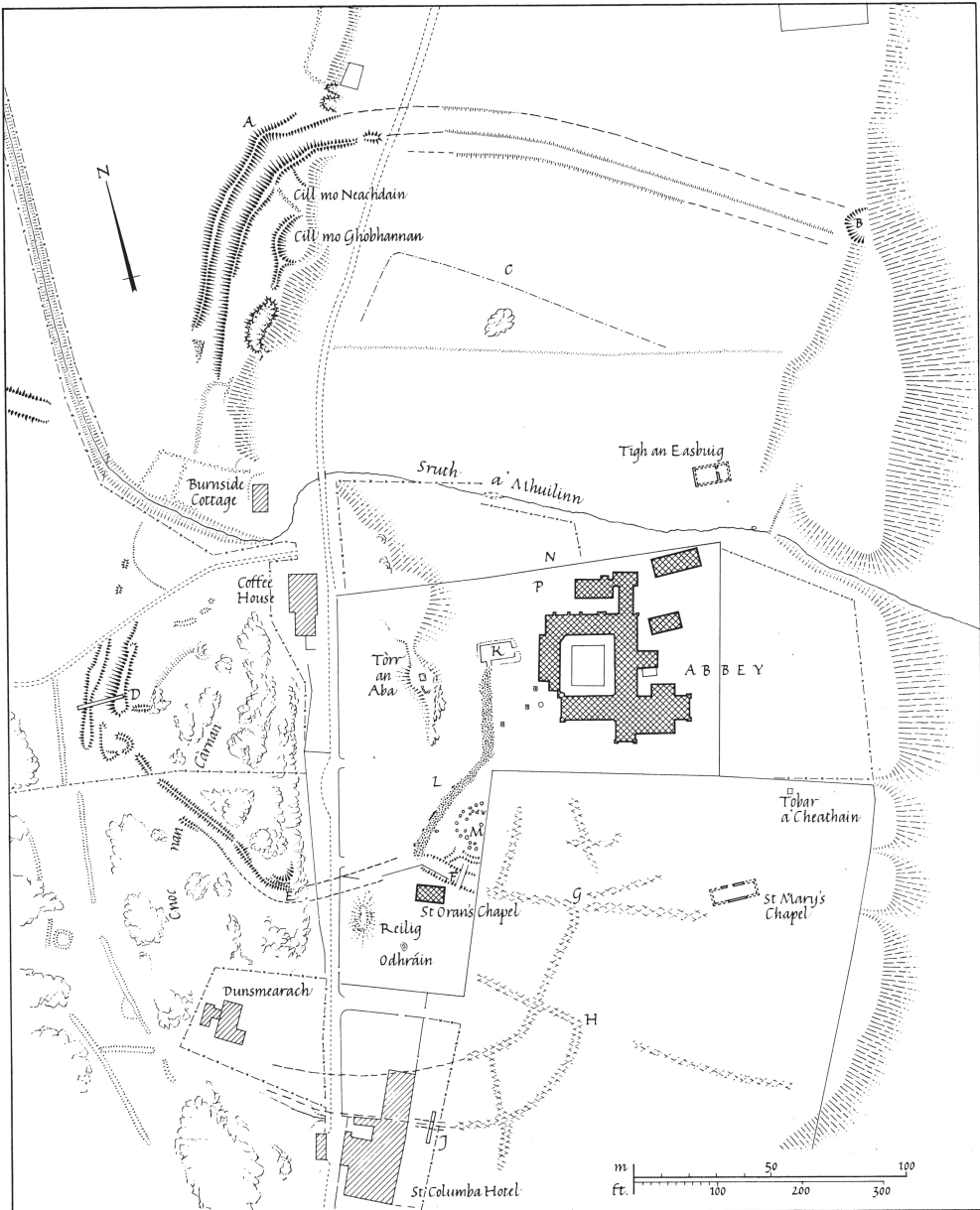


Fig 2. Detailed plan of Iona Abbey. Source: © Crown copyright: Historic Environment Scotland.

in places are cemented with iron-panning causing poor drainage. Attempts to control these drainage problems can be seen in many of the excavations. A series of substantial stone-lined drains have been encountered in many parts of the site, usually running north west–south east, which before the recent radiocarbon dates were obtained (see below) were believed to have been associated with the building of the Benedictine abbey that

commenced around AD 1200.³⁷ The natural deposits have been described in detail elsewhere, as has the general setting, and will not be repeated here.³⁸ The abbey, along with the Reilig Odhráin graveyard and the wider area enclosed by the *vallum*, is a Scheduled Monument (SM no. 12968) in the care of Historic Environment Scotland since 2000, but owned by the Iona Cathedral Trust and occupied by the Iona Community for use as a residential spiritual centre. The surrounding land and most of the island is mainly owned by the National Trust for Scotland.

All of the trenches opened by Thomas lay within the area of the early medieval monastery as defined by its *vallum* or enclosure, which had been previously located by the survey of upstanding earthworks.³⁹ The area within these bounds has been affected by significant changes in landholding and agricultural regimes since the Benedictine abbey fell into disuse in the mid-sixteenth century, and the enclosure walls have been repeatedly moved and reconstructed. The earliest mention of enclosures is in Dean Munro's account of the Western Isles in 1549, where he describes the *Religoran* ('the burial ground of Oran') graveyard as 'ane fair kirkzaird, well biggit [built] about with stane and lime'.⁴⁰ This is important as the only pre-Reformation account of the medieval monastery, and shows the Reilig Odhráin was already a separate enclosed burial ground at this period. The earliest estate map (1769) shows the rectilinear stone wall that was erected around the core of the ruins in the 1750s by the Duke of Argyll's tenants (fig 3) following concern by prominent visitors about the pillaging of the ruins.⁴¹

It is not known if this wall was a rebuilding of an earlier Benedictine phase enclosure or an entirely new one, but archive photographs suggest that it was medieval. The 1769 map also shows the 'Street of the Dead' surviving as a feature linking St Oran's chapel and the cathedral, the walls around the Reilig Odhráin with a distinctive kink in the northern wall reflecting the original entrance to the early medieval *vallum*, and other field boundaries. It also shows that the immediate area around the ruins to the west and south was under cultivation, with rig and furrow clearly represented. Over the next 250 years the site had a complex history of ownership, restoration and curation, and this is reflected in many changes to the layout of the enclosing walls. An Admiralty Chart of 1857, the earliest detailed map of the island, shows the enclosure of the arable land by rectilinear fields and the new road running north–south to the west of the abbey (fig 4).

THE BACKGROUND TO THOMAS'S EXCAVATIONS

In 1956, Charles Thomas was still early in his career but had begun to build his expertise in sub-Roman archaeology and particularly the archaeology of early Christianity, with early excavations at Gwithian, in Cornwall, from 1950, Nendrum, in Co. Down, in 1954, Trusty's Hill fort, in Dumfries and Galloway, in 1960 and an early chapel at East Porth, Teän, on the Isles of Scilly, in 1956.⁴² Restoration of the abbey and monastic

37. RCAHMS 1982, 49.

38. Barber 1981, 285–6, fig 4; RCAHMS 1982, 31–3.

39. Crawford 1933.

40. Munro 1961, 62–3.

41. RCAHMS 1982, 49.

42. Thomas 1956, 1985, 183–6; McErlean and Crothers 2007, 332.



Fig 3. Estate map of 1769 by William Douglas for the Duke of Argyll, showing rig and furrow cultivation areas around the abbey ruins, the 'Street of the Dead' coffin road and the dispersed village houses. Source: © Historic Environment Scotland.

buildings by the Iona Community since 1938 had highlighted the need for archaeological recording of the site, and by 1956 Sir David Russell agreed to fund excavations through the Russell Trust. Professor David Talbot-Rice (Fine Art, University of Edinburgh) was given the grant and obtained permission from the Iona Cathedral Trust and the Ministry of Works to excavate. Talbot-Rice initially asked Stuart Piggot (then the Abercrombie Professor of European Prehistory at Edinburgh) to undertake the excavations, but he declined and Charles Thomas was appointed to lead the excavations. It seems likely that this work on Iona was a factor in his appointment to his first academic post as a lecturer at the University of Edinburgh in 1958. While he was excavating at Iona, Thomas was also engaged in the long-term project of excavation at Gwithian from 1950 to 1969 (partially published recently), at Ardwall Isle from 1960 to 1965, at Abercorn during 1964–5 and a survey of the monastery at Applecross in 1963.⁴³ It is clear from personal letters, and his account of the Gwithian excavations, that Thomas was overwhelmed by the scale of the excavations he had undertaken, and he did not excavate at Iona between the 1959 and 1963 seasons.⁴⁴ Thomas's bibliography shows that he was also producing an astonishing range of publications throughout this period, on matters as diverse as Cornish military

43. Thomas 1957, 1984; Nowakowski *et al* 2007.

44. Thomas 2007 in Nowakowski *et al* 2007, 19–21.



Fig 4. Admiralty Chart of the Sound of Iona in 1859 showing the re-modelled village layout. *Source:* Reproduced with the permission of the National Library of Scotland.

history to Pictish art, but it is clear that publishing his excavation reports was not one of his priorities, nor his *forte*.⁴⁵

The stated aim of Thomas's campaign of excavation was 'to recover as much as possible of the material remains of the monastic house founded in AD 563 by Columba'.⁴⁶ In particular, the course of the monastic *vallum* was cited as the specific aim in locating many of his trenches, and Thomas did publish a proposed plan of the monastery based on his excavation findings.⁴⁷ There was very little archaeological material from Iona available by the time Thomas and his team arrived on Iona in July 1956. Summaries of the medieval textual sources had been produced by Skene in the late nineteenth century, and O G S Crawford had made the first attempt to integrate these with field survey in the 1930s, but these accounts were based on very little excavated evidence.⁴⁸ Excavations around and within the cathedral by P MacGregor Chalmers in 1909 and 1912 had only been published in note form, but produced plans of early foundations which Thomas had available, though it is doubtful if these were reliable.⁴⁹ It was against this background that Thomas undertook his excavations, and it is important to note how much of what we now know about the layout of the early monastery is due to Thomas's research.

45. Thomas 2012, 184–99; Driscoll 2017, 16; Campbell and Maldonado 2019.

46. Thomas 1957.

47. Thomas 1971a, fig 8.

48. Skene 1874, 1876; Crawford 1933.

49. NMRS, AGD/23/636; Anon 1915; Driscoll 2002, 65.

Thomas's archive

Before presenting the results of this work, it is worth addressing the nature of the surviving archive and the various issues and limitations this has presented. Thomas's personal archive was divided into at least three main groups after the time of the excavations. The bulk of the finds archive (the original site codes are HY56–HY63) and a limited set of original plans, photographs and correspondence relating to 1956–59, were handed over to the former Historic Scotland by Thomas in 2012. A second group of documentary archival material is now held within the National Monuments Record (MS331). However, much of this is not the original paperwork but rather copies of the original drawings catalogued with the archive of John Barber's 1979 excavations, which re-opened several of Thomas's trenches. It appears that these drawings were only loaned to the former RCAHMS for the purpose of making these copies, as some of the original drawings copied and filed here were part of the material handed over by Thomas in 2012, meaning that the remaining drawings were misplaced in the intervening period. As such, many of the available drawings were unfortunately of low quality, being scanned copies of facsimiles.

The core of the paper archive, including the daybooks for each season, photo negatives and correspondence relating to 1960–3, were only lately located by the Cornish Archaeological Trust and handed over to the former RCAHMS in 2015, after the current project had begun. This revealed site visits, watching briefs and minor excavations carried out by Richard Reece on behalf of Thomas in 1961–2, which were only minimally recorded. The absence of key team members during the final season of excavations in 1963 means that in some cases trench locations survive only as hand-drawn maps made in the field or in sketches in daybooks, and have been reconstructed as accurately as possible given these limitations. A further group of finds from the 1957 excavations, initially in the Department of Archaeology in the University of Edinburgh, were later deposited in the National Museum of Scotland.

While the majority of the original paper archive has now been located, much has been lost for various reasons. One is simple attrition over time: several photographs, drawings and even whole notebooks mentioned in the daybooks have not survived in any form. The other issue is that of dispersal: many chunks of original material have either been retained within individual team members' private archives, or separated out from the main archive for specialist reporting. Missing finds are presumed to have gone out to specialists, and may yet survive unidentified in museum collections. Peter Yeoman, formerly of Historic Scotland, managed to obtain valuable photos of the excavations and team members in 1957–8 from Elizabeth Fowler in 2014, while a 1956 collection of photographs (mainly architectural) by Nicholas Thomas were accessioned by RCAHMS in 2014.⁵⁰ A particular loss is the bulk of the photographs of excavations taken in various seasons by University of Edinburgh photographer Malcolm Murray, which have not been located at the time of writing this article.

The Iona Community

It is clear from the diaries that strong friendships with locals and members of the Iona Community were developed, and several local traditions were recorded. There were

⁵⁰ NMRS 551 359/3/53.

problems as well – at this time the Iona Community was male only, and the female members of the excavation team were banished from the heated huts:

A day of unremitting rain. Most of us succeeded in getting soaked through fairly effectively – the rain has a sort of diagonal virulence. The girls still have nowhere to stay and had to spend the night in tents on the foreshore getting soaked.⁵¹

The Iona Community had been set up in 1938 by Reverend George MacLeod, sometime Moderator of the Church of Scotland (later Lord Fuinary), as an initiative of the Church of Scotland to encourage spiritual employment for Clydeside shipworkers, and continues today as a religious community dedicated to social justice.⁵² MacLeod was an imposing and sometimes divisive figure in Scottish religious life, described by one Church Commissioner as being 'halfway to Rome and halfway to Moscow' due to his interests in Eastern Orthodox ritual and in social justice. Thomas describes him in a note:

Like his earliest predecessor [St Columba], he knows both academic life and the world of warfare: like him, too, he may fairly be described as aristocratic, powerful, and controversial. He also shares Columba's gift for inspiring the deepest affection.⁵³

There are hints here and elsewhere in the correspondence of a conflict between Thomas and MacLeod that may have led to Thomas abandoning the excavation programme and Richard Reece taking over as director.

THE EXCAVATIONS

General

The excavations were very much a product of their time, conducted as a series of slit trenches, with no systematic planning or recording of contexts, though finds lists were kept and many sections and some plans were drawn. There was no overall site grid for planning, and locating the position of the trenches for this article was difficult while producing the Data Structure Report. The only previously published plan of the excavations was based on incomplete information and was found to be deficient in many areas, with some trenches missing and others incorrectly located.⁵⁴ Despite the problems, it has been possible through painstaking archival work to reconstruct much of the character of the excavations, and locate the most important finds. Around 100 separate trenches, here termed 'Cuttings', were opened by Thomas over five seasons of excavation (fig 5). The scale and nature of the work was very similar to Raleigh Radford's contemporary excavations at Glastonbury Abbey, including the use of diagonal trenches.⁵⁵ This is not surprising

51. Site archive Diary 8 July 1956.

52. Ferguson 2001.

53. Site archive *Diary* 1957.

54. O'Sullivan 1999, fig 7.

55. cf Gilchrist and Green 2015, fig 1.7.



Fig 5. Updated plan of Thomas's excavation trenches around the abbey, with relevant Cutting numbers. *Source:* authors.

as Thomas looked on Radford as his mentor and undoubtedly visited the Glastonbury excavations, and Radford certainly visited Iona in 1959.⁵⁶ Thomas was a brilliant scholar, and very much an 'ideas man', but he seems to have left much of the day-to-day archaeology to his assistants, all undergraduate and postgraduate students, many of whom went on to very distinguished archaeological careers. In the case of Iona, these included Vincent Megaw, Bernard Wailes, Jeffrey May, Peter Fowler, Elizabeth Burley (Fowler) and Richard Reece, who continued the Russell Trust excavations from 1964–74.⁵⁷ Other notable volunteers during some seasons included the Shakespearian actor Eric Porter, the writer Jessica Mann (later Thomas's wife) and archaeologists Jeremy Knight, Egil Bakka, Derek Simpson, Nicholas Thomas, Graham Ritchie and Mike Walker.

Most of Thomas's 100 trenches were dug fairly quickly – some trenches were opened, excavated and backfilled in a few days. If nothing of interest to the excavators was found, or sometimes if the deposits could not be understood, no recording was undertaken. The nature of the archaeology often made it impossible to dig and/or understand the deposits in these restricted trenches. For example, the many slit trenches in the area of the deep *vallum* ditch were never bottomed or fully understood – this is not surprising as Barber's excavations later showed there were 2.5m of waterlogged deposits here and that Thomas's excavations had only extended into the later silting up of the ditch and the

56. Thomas 1998.

57. Reece 1981.



Fig 6. Depth of surviving stratified archaeological deposits. *Source:* authors.

later drains.⁵⁸ Similarly, although the excavators recorded postholes and other timber features, these were impossible to interpret given the small scale of the trenches.

What the excavations do give us, however, is a broad picture of the nature of the deposits throughout the site. From this information, combined with data from other excavations, it was possible to draw an isopleth plan of the existing archaeological deposits within the abbey precincts (the boundary of the Property in the Care of the State) (fig 6). The depth of deposits varied markedly over the site. To the west of Torr an Abo, ploughing had removed most of the archaeology, with only a few drains being identified. Deposits gradually thickened eastwards, reaching over 2m by the east wall, and over 2.5m within the *vallum* ditch. Outside the precinct wall there is a marked drop-off to the surrounding fields. Much of this build-up comprised building debris and landscaping of the medieval to modern periods, but substantial stratified earlier deposits were found in many trenches.

Although the numerous campaigns of building and excavation have caused extensive damage to the archaeological resource, large parts remain intact, amounting to half of the potential early medieval deposits (table 1). In addition, an unknown area of early medieval deposits presumably survives in the surrounding fields, though these were cultivated until recently. Early accounts speak of 'buckles, brooches, and large pins' turning up

58. Barber 1981.

Table 1. Area of early medieval deposits at Iona surviving within the Property in Care boundary.

	Area (m ²)	%
Area of early medieval deposits	10,900	100.0
Area obscured by buildings	2,025	19.0
Area obscured by cemetery (Reilig Odhráin)	1,542	14.1
Area removed by Thomas 1956–63	678	6.2
Area removed by other excavations	996	9.1
Undisturbed early medieval deposits	5,659	51.9

in these fields.⁵⁹ A trial trench in 2017 showed the survival of stratigraphy in at least some areas of this field.⁶⁰

A general sequence of deposits was recognised by Thomas's excavators across many of the excavation trenches:

1. Modern deposits and landscaping associated with the rebuilding of the Benedictine monastery, and tumble from the collapse of these buildings in the period after the Dissolution in 1560.
2. Buildings, paving, drains and destruction debris from the Benedictine phase.
3. 'Columban period' deposits and ditches, pits, etc.
4. Black peaty soil, often labelled 'OLS' – the old land surface.
5. Natural sands, gravels and raised beach cobbles.

It should be noted that Thomas's simple division between what he termed 'Columban' occupation and the Benedictine phase (that is, the thirteenth to sixteenth centuries) was governed by the prevailing view at the time that Iona had been abandoned in the ninth century due to Viking attacks. For Thomas, therefore, the 'Columban' phase dated from the sixth to eighth centuries. Drawn sections were often labelled with these divisions (fig 7). While there was often no artefactual or scientific basis for assigning specific contexts to these periods, later excavations and radiocarbon dates obtained by Reece and Barber suggest that the general pattern holds even if the precise dating cannot be upheld, and that deposits and features labelled 'Columban' by Thomas date more broadly to the pre-Benedictine phase of the site.

Structural evidence was seen in places, but mainly in the western part, where excavations by Reece and Barber later revealed a complex palimpsest of postholes, pits and other features (fig 8).⁶¹ These structures are described further below, but in general they seem to occur only in two proscribed clusters: within the cloister and the areas immediately to its north and west; and in the area between the Reilig Odhráin and Tòrr an Aba. The piecemeal nature of Thomas's excavations precluded any understanding at the time of the nature of these structures or the intensity of settlement activity they represented. In combination with a re-assessment of the finds record and a more holistic understanding of the nature of post-medieval use of the site, including modern excavations, Thomas's record has proved more valuable than he or successive excavators thought possible.

59. Keddie 1850, 101.

60. Campbell and MacIver 2017.

61. Barber 1981; Reece 1981.

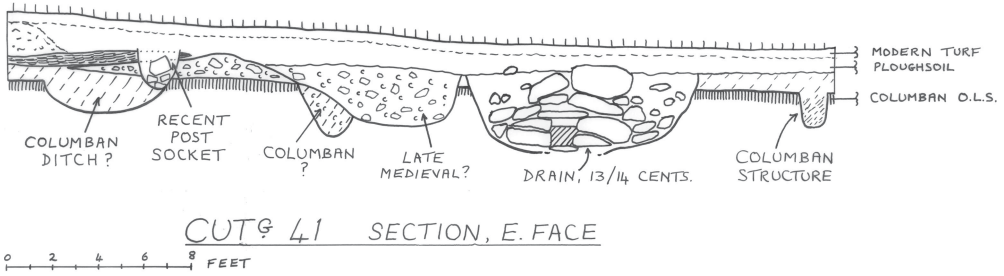


Fig 7. Original section drawing of Thomas's Cutting 41 showing his attribution of 'Columban' features. *Source:* Charles Thomas.

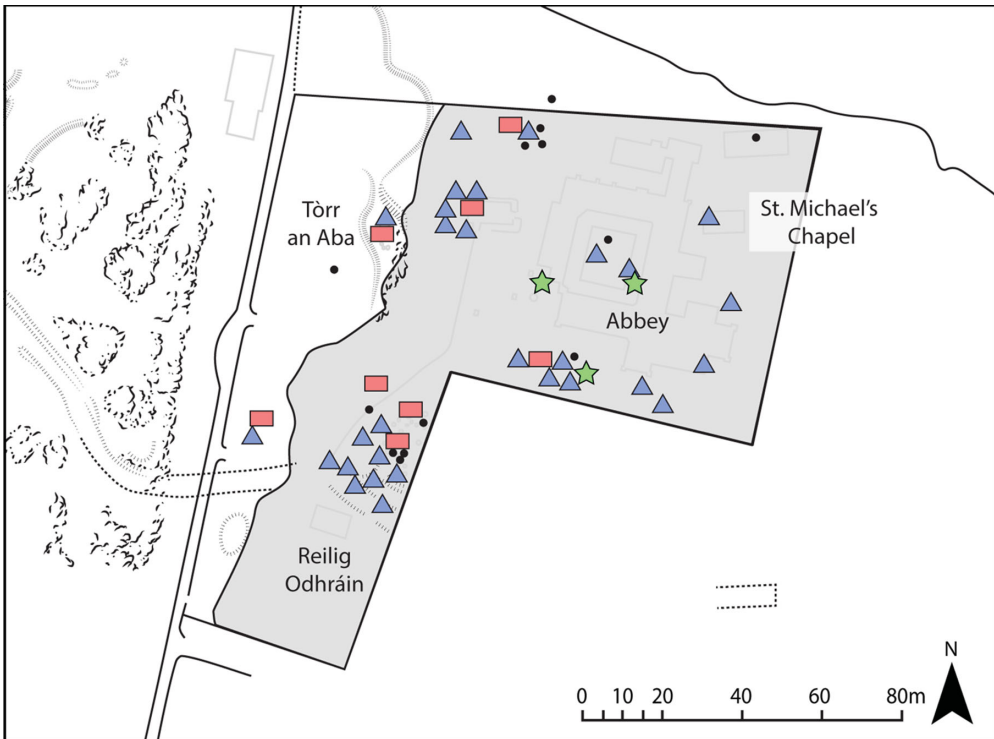


Fig 8. Distribution of early medieval evidence, showing a strong concentration around the medieval abbey: structural evidence (■); radiocarbon dates (▲); burials (★); finds (●). *Source:* authors.

Chronology

Thomas's excavations took place at the start of the radiocarbon revolution – there was no systematic collection of charcoal and no radiocarbon dates were obtained at the time. A few dates were obtained by later excavators, though some of these are problematic for various reasons, such as large standard deviations.⁶² Detailed analysis of the surviving finds

62. Barber 1981, 310, tab 4; Reece 1981, 108, tab 20; McCormick 1993, 80, tab 1.

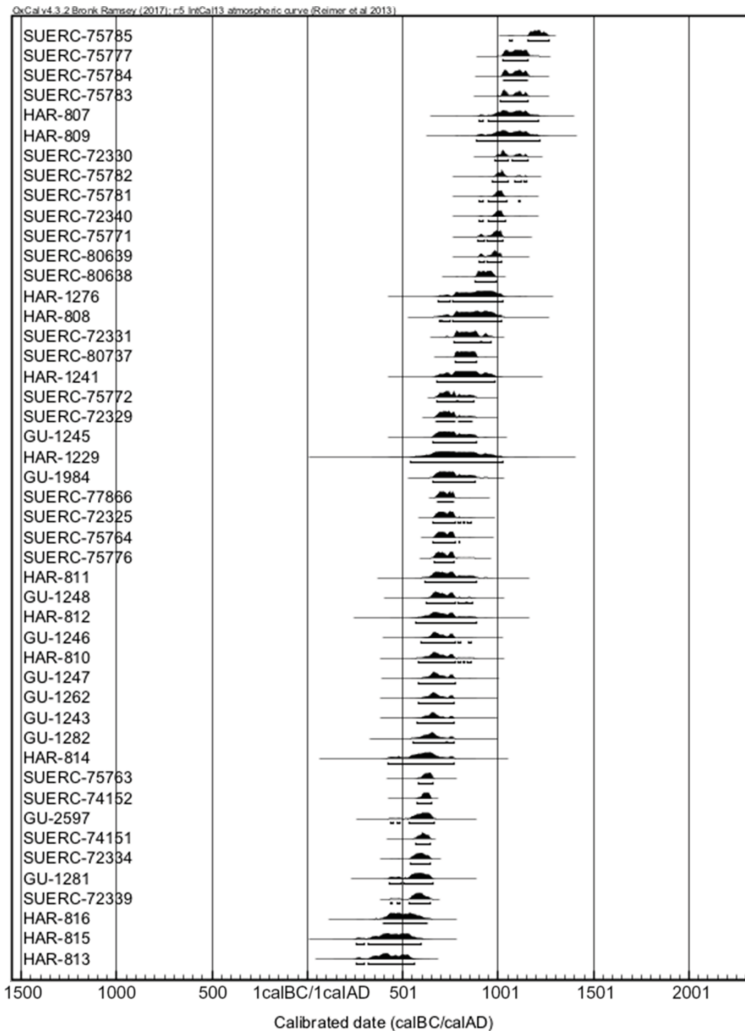


Fig 9. All radiocarbon dates from Iona Abbey, previously published dates recalibrated, notice little evidence of Viking disruption. *Graph:* authors, using OxCal v4.3.2.

identified a number of charcoal samples that would be suitable for dating, and these were submitted to SUERC at East Kilbride, and are presented along with the older dates in figure 9 and table 2.

Many of the dates confirm Thomas's suspicion that the lower sequences of deposits belong to the early monastic period. For example, a date from low in Cutting 11C, south of the abbey, centres on the sixth century (SUERC-72339), and a date from Cutting 12 in the cloisters associated with a number of burials is sixth-/seventh-century (SUERC-72332). Most excitingly, the new dates from Torr an Aba suggest that the burnt wattle building there dates to the period around Columba's lifetime (SUERC-74151 and 74512) centring around AD 600. This would appear to confirm the Fowlers' suggestion that this building

Table 2. New and published radiocarbon dates from Iona Abbey, calibrated using OxCal 4.3.2.

Excavation	Material	Lab no.	Date BP	cal ± 2σ	
Published dates					
Barber 1981	wood	GU-1243	1365 ± 55	AD 580–770	
	wood	GU-1246	1335 ± 55	AD 600–860	
	wood	GU-1247	1345 ± 55	AD 580–780	
	wood	GU-1248	1315 ± 55	AD 620–870	
	wood	GU-1245	1260 ± 55	AD 660–890	
	charcoal	GU-1281	1480 ± 55	AD 430–655	
	charcoal	GU-1282	1380 ± 60	AD 550–770	
	charcoal	GU-1262	1355 ± 55	AD 590–770	
Reece 1981	wood (oak post)	HAR-807	980 ± 70	AD 900–1210	
	charcoal	HAR-808	1150 ± 70	AD 700–1020	
	charcoal	HAR-810	1340 ± 60	AD 580–860	
	charcoal	HAR-809	990 ± 80	AD 890–1220	
	charcoal	HAR-811	1300 ± 70	AD 620–890	
	charcoal	HAR-812	1330 ± 80	AD 570–890	
	animal bone	HAR-1229	1260 ± 130	AD 540–1025	
	charcoal	HAR-813	1630 ± 60	AD 260–560	
	charcoal	HAR-814	1420 ± 90	AD 420–770	
	animal bone	HAR-1276	1130 ± 80	AD 690–1030	
	animal bone	HAR-1241	1190 ± 70	AD 680–980	
	charcoal	HAR-815	1610 ± 70	AD 260–600	
	charcoal	HAR-816	1550 ± 60	AD 390–630	
	Haggerty 1988	charcoal	GU-1984	1265 ± 50	AD 660–880
	McCormick 1993	charcoal	GU-2597	1450 ± 50	AD 535–660
	charcoal	GU-2598	1650 ± 50	AD 260–540	
New dates					
Material from Thomas 1956–63	charcoal	SUERC-72332	1477 ± 32	AD 540–650	
	charcoal	SUERC-74152	1443 ± 20	AD 580–650	
	charcoal	SUERC-74151	1459 ± 19	AD 570–640	
	charcoal	SUERC-72335	2013 ± 32	100 BC – AD 70	
	charcoal	SUERC-72339	1483 ± 32	AD 470–650	
	charcoal	SUERC-72329	1257 ± 32	AD 670–870	
	charcoal	SUERC-72330	991 ± 32	AD 990–1150	
	charcoal	SUERC-72331	1175 ± 32	AD 770–970	
	charred residue	SUERC-72325	1277 ± 34	AD 660–780	
	charred residue	SUERC-72340	1036 ± 32	AD 900–1040	
	charcoal	SUERC-74151	1459 ± 19	AD 570–640	
	charcoal	SUERC-74152	1443 ± 20	AD 580–650	
	peat	SUERC-75763	1420 ± 31	AD 580–660	
	Material from Campbell 2017	peat	SUERC-75764	1278 ± 31	AD 660–800
		human bone	SUERC-75782	1010 ± 31	AD 970–1050
human bone		SUERC-75783	973 ± 31	AD 1020–1220	
human bone		SUERC-75784	956 ± 31	AD 1020–1155	
animal bone		SUERC-75785	840 ± 31	AD 1060–1265	
charcoal		SUERC-75776	1289 ± 31	AD 665–770	

(Continued)

Table 2. (Continued)

Excavation	Material	Lab no.	Date BP	cal ± 2σ
	charcoal	SUERC-75781	1029 ± 31	AD 950–1040
	charcoal	SUERC-75777	940 ± 31	AD 1025–1160
	wood (birch twig)	SUERC-77872	1268 ± 22	AD 680–770
Material from Redknap 1976	wood (alder log)	SUERC-80737	1190 ± 17	AD 775–880
	wood (oak plank)	SUERC-80638	1121 ± 24	AD 880–990
	wood (pine plank)	SUERC-80639	1072 ± 24	AD 890–1020

was indeed the hut (*tegor(io)lum*), ‘in a raised up place’, where Columba wrote and oversaw the community, despite doubts expressed by others.⁶³ Another surprise is the date of the stone-lined drain in the upper fill of Barber’s Ditch 1, which had been assumed to be later medieval.⁶⁴ In fact, deposits enclosing this drain were dated to between the late eighth and late tenth century (SUERC-72331) and show that significant structural activity – probably an enlarging of the monastic enclosure – was taking place at this enigmatic period in the history of the site (see below). Other dates are discussed in the appropriate sections below. Looking at the date ranges as a whole, there is some evidence for pre-Christian activity on the site from the Bronze Age onwards, and no clear break in occupation in the late first millennium (again, features that had been suspected).

THE ROAD TO SALVATION

One of the key discoveries of Thomas’s excavations was the unexpected uncovering of a substantial paved roadway running from the Reilig Odhráin to the ruined building to the west of the cathedral labelled the Old Guest House by Reece.⁶⁵ Although a path is shown here on the 1769 estate plan (see fig 3), the hollow it lay in had been infilled with debris in the intervening period and its nature was unsuspected. The roadway is in two sections, each with different character of paving, with a sharp kink between the sections, and is clearly of two periods. The section which runs north from the Reilig Odhráin is the earlier, and is paved with very large, water-rounded, tightly packed boulders of red Ross of Mull granite, which have a polished surface due to heavy foot traffic (fig 10).

The road was a very substantial construction, involving the procurement and transport of a large quantity of stone, at least 250 tonnes of material for the section within the monastic enclosure, representing a major investment of resources in its construction. Its character differs from the later medieval flagging seen around the west end of the abbey church.⁶⁶ Thomas identified this road with the *Sràid nam Marbh* (‘Street of the Dead’), a coffin road known from antiquarian accounts to have run from the traditional Iona landing place in Martyrs’ Bay towards the cathedral, although this name properly refers to a different, later medieval routeway running towards the centre of the abbey.⁶⁷ However,

63. Fowler and Fowler 1988, 199; Sharpe 1995, 286, n 127; RCAHMS 1982, 40.

64. Barber 1981, 360.

65. Reece 1981, 3.

66. For example, Redknap 1977, figs 3 and 4.

67. RCAHMS 1982, 142.

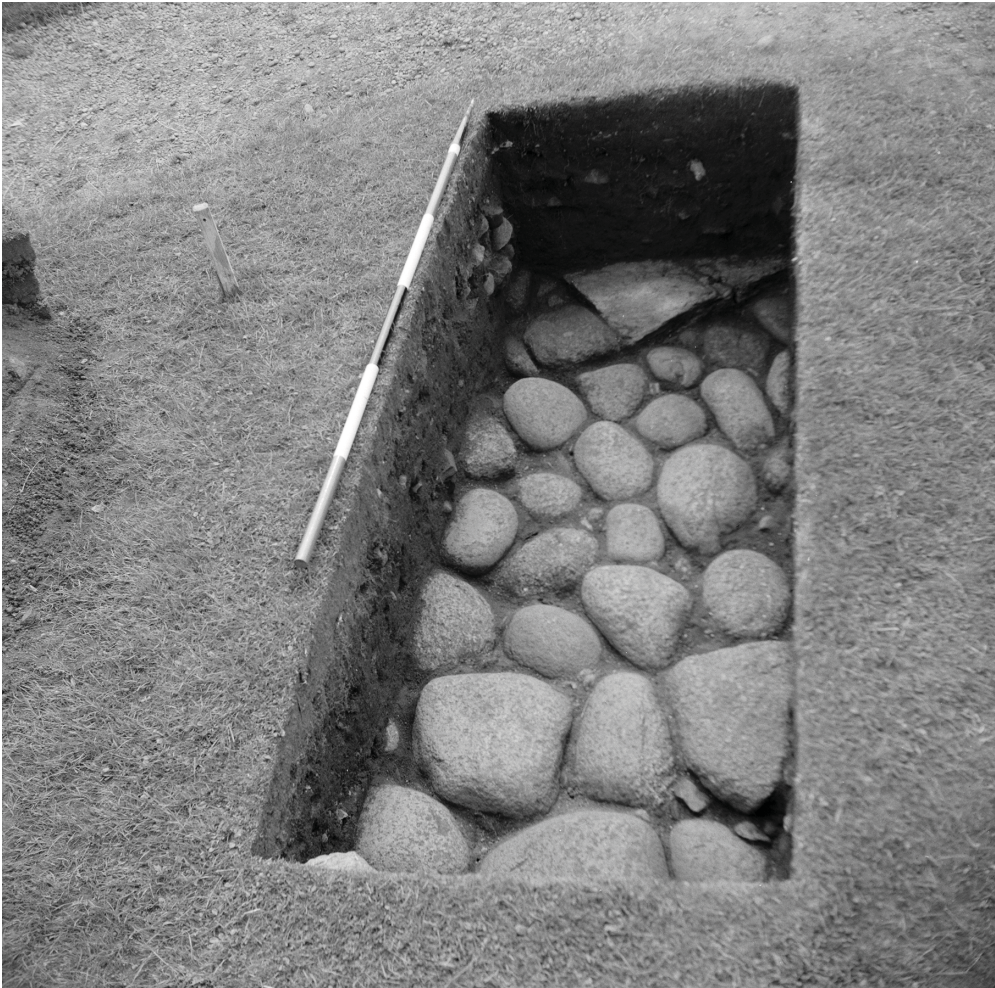


Fig 10. The surface of the boulder-paved roadway surface exposed in Thomas's Cutting 20 in 1959, looking north west. *Photograph:* © Professor Charles Thomas Collection.

the name continues to be used in most accounts of this boulder-paved roadway, and will be used here as an identifier. The full extent of the road was revealed by clearance work overseen by Richard Reece in 1962–3, associated with celebrations for the 1,400th anniversary of Columba's founding of the monastery (fig 11). The later coffin road, marked on the 1769 estate plan and running to the south-east corner of the medieval abbey, was excavated in 2013 and found to be of quite different character as it was surfaced with an insubstantial gravel spread.⁶⁸

The early stretch of paved road is between 2m and 3m wide with a kerb at least intermittently on the east side, and was also bounded by a low wall on its west side which may be of later date. Because the roadway is such a unique feature in an early medieval context, it has perhaps not received the attention it deserves. Paved roads in Britain ceased to be built

68. Will 2014, fig 6.



Fig 11. The paved roadway leading from the Reilig Odhráin directly towards St Columba's shrine chapel, with St Martin's Cross on the left and the base of St Matthew's Cross on the right. *Photograph:* © Crown copyright: Historic Environment Scotland.

with the collapse of the Roman Empire, and in general do not re-appear until the post-medieval period. Previous accounts of the road have assumed that its construction belongs to the Benedictine phase, apparently a misunderstanding based on a comment by Reece that only applied to the later northern section of paving.⁶⁹ The road passes through an original gap in the large *vallum* ditch excavated by Barber, which was dated to the seventh/eighth century (table 2: GU-1243, 1365 ± 55; cal AD 580–770), so it must have been created in some form at that time. Barber also assigned the paving of the earlier part of the road, if not the original line, to the later Benedictine period on the basis that some stone-lined drains are attached to its eastern side.⁷⁰ However, the new dates obtained from material surrounding the drain places its construction in the late eighth to late tenth century (table 2: SUERC-72331; 1175 ± 32, cal AD 770–970). Without excavation of the road itself, which has not taken place, it is impossible to be sure of the relationship of the boulder paving to any putative earlier surface, or to the drains. The simplest explanation for the data is that this is an original roadway that ran between the most sacred parts of the island (see below), and that the slightly later drains were built to re-channel older drain lines that lay beneath the road surface. This date from the drain also confirms that the *vallum* ditch here was mainly infilled by the eighth/ninth century, suggesting that the section of *vallum* further south, under the St Columba Hotel, represents an expansion of the original enclosure.

The more northerly section of the road has paving of mixed materials, often slabby, and runs outside the line of the Benedictine enclosure wall. It includes some rounded boulders

69. Reece 1981, 37; RCAHMS 1982, 142.

70. Barber 1981, 306.

of granite that have clearly been derived from the earlier section of paving. This section represents a re-routing of the main approach to the abbey, taking visitors through a gateway in the western enclosure wall, and probably dates to the later medieval period. Reece reported that it had several phases of paving in places, and sealed grass-marked pottery.⁷¹

The construction, possibly in the seventh/eighth century, of such an impressively engineered paved roadway in this remote location has to be explained, especially as there seem to be no parallels in other contemporary Insular contexts. The route of the paved road can be reconstructed from antiquarian accounts and recent geophysical study (fig 12). It extends southwards through the Reilig Odhráin, towards a presumed entrance in the outer ditch of the *vallum* beneath the St Columba Hotel, then runs past the north door of St Ronan's church towards the traditional landing place at Martyrs' Bay with its burial mound, *An Eala*. However, in this area there is no sign of paving seen in geophysical investigations of the surrounding fields or in recent test pitting.⁷² In the other direction, it must have continued its direct line towards St Columba's shrine chapel, and its line is possibly seen here in recent geophysical work.⁷³

This paved routeway is best interpreted as marking an early medieval pilgrimage route linking the main devotional and burial sites on the island: the landing place at Martyr's Bay, and the chapels of St Ronan, St Oran and St Columba (see fig 12). The burial ground at Martyrs' Bay has stone-lined, long cist burials and at least one early medieval-dated burial.⁷⁴ St Ronan's medieval church overlies an early medieval clay-bonded stone-built chapel, which itself overlies early burials, unfortunately undated.⁷⁵ This early chapel appears to have *antae* characteristic of early Irish chapels.⁷⁶ It is very similar in size and construction to the clay-bonded St Columba's shrine chapel and is possibly of similar early date. The existing structure of St Oran's chapel is thought to be of twelfth-century date (though this dating derives from a doorway that is inserted into an earlier fabric), but it presumably also had an earlier predecessor.⁷⁷ St Oran's importance on Iona is attested by the Middle Irish *Life of Colum Cille* at least by the twelfth century, where Columba reputedly states 'No-one will be granted his request at my own grave, unless he first seek it of you', indicating that pilgrims and penitents should follow a set liturgical route through the monastic complex.⁷⁸ St Oran's chapel was the focus of the Reilig Odhráin, traditionally the burial ground of kings, and in the later medieval period of local lords and clan chiefs. Perhaps significantly, this burial ground lay outside the original monastic enclosure.

The roadway was also flanked by at least seven monumental free-standing crosses (see fig 12). Although the crosses on Iona are perhaps the most intensively studied monuments of early medieval Scotland, almost nothing has been written on their placement within and around the monastic precinct. Three early medieval crosses were standing in their original positions near the west door of the abbey when first recorded by antiquarian travellers (namely the crosses of St John, St Martin and St Matthew), while fragments of several others have also been recorded around the abbey.⁷⁹ Cross-bases show that another two

71. Reece, pers comm, 2015; Campbell and Maldonado 2016, 38.

72. Derek Alexander, pers comm, 2017.

73. GPR survey, Ovenden 2016, fig 9.

74. Reece 1981, 64, 106 UB-606, 1255 ± 65; cal AD 650–940.

75. O'Sullivan 1994.

76. *Ibid*, illus 2; Ó Carragáin 2010a.

77. RCAHMS 1982, 250.

78. Herbert 1996, 192–3, 261; Overbey 2012, 92.

79. RCAHMS 1982, 192–216.



Fig 12. The early medieval monastic liturgical landscape of Iona, showing the roadway, the monastic enclosure ditches, early chapels (□), extant crosses (+), crosses inferred from bases or documentary sources (⊕) and burial grounds (○). *Source:* authors.

crosses stood by the edge of the Street of the Dead, one in the Reilig Odhráin and one with a mill-stone base closer to the abbey, uncovered in excavations.⁸⁰ In addition, the fragments of a complex box cross-base similar to that of St John's Cross was first recorded just west of St Oran's chapel, and may have held St Oran's Cross, also first recorded here.⁸¹ Further crosses are known from documentary sources: St Brandon's near the outer entrance of the enclosure; St Adomnán's near Port Adomnán; and *Na Crossan Mor* – two crosses in the north-west of the monastic enclosure. Later medieval crosses include

80. Barber 1981, pl 19a.

81. RCAHMS 1982, 214 no. 99.

the extant McLean's Cross; a similar cross recently excavated in the grounds of the primary school; a cross-base in a mill-stone on the summit of Tòrr an Aba; and several others, some of which may have had early medieval predecessors.⁸² There is an account of many crosses being ordered to be destroyed by an act of the Synod of Argyll in 1642, though these could have been cross-incised slabs, if they were actually destroyed.⁸³ However, the large number of attested crosses illustrates the importance of Iona, and compares with Irish sites such as Clonmacnoise and the possibly Iona-founded monastery at Portmahomack.

The function of these early medieval high crosses has been much discussed, with their use as boundary markers, sanctuary crosses, teaching aids, preaching crosses, reliquaries, Rogationtide processional markers or weather crosses all being suggested.⁸⁴ However, Adomnán, in our only contemporary account of crosses on Iona, mentions three that were erected to commemorate important incidents in the life of Columba and presumably served as stations for prayer and reflection, both by the monks as they passed them on their way to work in the fields and by pilgrims visiting St Columba's shrine.⁸⁵

The devotional landscape of Iona can be also be interpreted more generally as representing a journey towards salvation, with the monastery being seen as a metaphor for both earthly and heavenly Jerusalem.⁸⁶ This route mimics the journey of pilgrims to the Church of the Holy Sepulchre in Jerusalem, with the objective of reaching the holiest places on the island, St Columba's shrine and the altar of the church. The unstated but implied parallel between Columba and Christ is one that occurs many times in Adomnán's *Vita* (for example, in the story of his turning water into wine).⁸⁷ Throughout his *Vita*, Adomnán emphasises incidents in the daily life of the monastery that take place on the monks' journey to and from their fields on the west of the island. These include the story of the weary crane, Columba's spiritual visit to his monks, Columba's visitation by angels, the miracle of rain brought about by Columba's relics and, particularly, in the extended account of Columba's last days.⁸⁸ In addition there are numerous references to visitors, pilgrims and penitents who would have followed the same routeway to the monastery. Given Iona's proposed role in the development of the ideal conceptual layout of the early monastic community, the roadway gains added significance. Pilgrims such as Adomnán's informant, the Gaulish bishop Arculf, would have been familiar with the paved streets of Rome and of Jerusalem itself (the early *via dolorosa* followed the route of the main east–west Roman road in Jerusalem, the *decumanus maximus*), and those streets must have been the model for the construction of the Iona road. It is likely that the Iona road itself then became the model for other Insular monasteries, as roads have been found at Portmahomack, the Isle of May, Govan, Whithorn and Hallow Hill, St Andrews.⁸⁹ Most of these are not as substantial as the Iona road, being surfaced with gravel or pebbles. In Ireland there are several paved roads at Clonmacnoise, though the paved phase of these seems to date to the eleventh century, and other paved roads associated with monasteries also seem to be of later medieval date,

82. C Ellis, pers comm, 2017; RCAHMS 1982, nos 222–7; Fowler and Fowler 1988.

83. Sharpe 2012, 235.

84. Fisher 2001, 8–9; Neuman de Vegvar 2007a.

85. *VC* i.45; iii.23.

86. O'Loughlin 2007, 210, and 2010; Jenkins 2010.

87. O'Reilly 1997; Ó Carragáin 2010a, 78; *VC* ii.1.

88. *VC* i.48, i.37, ii.44, iii.16, iii.23.

89. Proudfoot 1996, 416, illus 5; Hill 1997, fig 3.5; James and Yeoman 2008, 16, illus 4.13; Dalglish and Driscoll 2009, fig 3.15; Carver *et al* 2016, illus 3.15.

emphasising the unique nature of the Iona roadway.⁹⁰ At Glastonbury, the early churches may have been aligned on a Roman road, but no trace of this was found in excavation, and a similar situation existed at Canterbury where the churches of Peter and Paul, St Mary, and St Pancras lie along the Roman road.⁹¹ Elsewhere in England, a walled corridor at Wearmouth, in the north east of England, has been interpreted as a *porticus*, a covered processional way linking buildings within the early monastic complex, a feature seen as being deliberately modelled on examples from Rome.⁹² A possible predecessor to this is represented by short stretches of cobbled path that are less substantial than the Iona roadway, but it was suggested by the excavator that this may have been a path to the river and so could have had a similar function to Iona's roadway.⁹³ Éamonn Ó Carragáin has shown how the early liturgy known at Wearmouth/Jarrow also reflected the Roman liturgy designed around a processional way that linked stations at churches within Rome.⁹⁴ It can be speculated that Adomnán's focus on Jerusalem, as well as on Rome, may have served the function of differentiating Iona from both Anglo-Saxon and, especially, Armagh-based monastic practice that primarily referenced Rome.⁹⁵

THE SACRED BOUNDARY

Early monasteries symbolised their separation from the secular world by the use of enclosing walls, hedges, banks or ditches. The enclosed area also had a different legal status, functioning as a place of sanctuary. The form of the monastic enclosure at Iona has long been recognised as a puzzle, as it does not conform to the Irish pattern of circular, often concentric, *vallum* ditches, but has a generally sub-rectangular shape. In addition, with the advent of aerial photography and then geophysical survey, a more complex pattern of ditches became apparent, and several attempts have been made to give an overview of the layout of the monastery.⁹⁶ Iona is also unique in having two upstanding earthwork banks surviving around part of the circuit. A major new geophysical survey has provided a much more detailed picture of the site, which reveals the ditches in particular (fig 13).⁹⁷

It is clear that the pattern is complex and multiphase, making it difficult to speak of 'a *vallum*'. Only a detailed programme of dating can hope to resolve the relative chronology of the many elements that make up these enclosures, but a sequence of gradual enlargements can be postulated. Dates obtained in 2017 show that the north-western section dates from the eighth century (table 2: SUERC-77872, 1268 ± 22; cal AD 680–770), and it may be that these surviving earthworks date to a later period of monumentalisation of the site associated with the enshrinement of Columba's relics, rather than the primary phase of occupation. The strange route of this western section, which cuts across rocky ground to a cliff-edge, may have been designed to enclose the 'little hill' from which Columba blessed the monastery on his final day.⁹⁸

90. Breen 1988, 332–3; Bradley 1998, 46–7; Moloney 1998.

91. Gilchrist and Green 2015, 392, fig 3.3.

92. Cramp 2005, 358.

93. *Ibid.*, 91, figs 9.6 and 9.8.

94. Ó Carragáin 1995, 13

95. Ó Carragáin 2010a, 70; Maddox 2011, 16–9.

96. Summarised by Barber 1981, figs 46 and 47.

97. OCGU 2010.

98. *VC* iii.23.

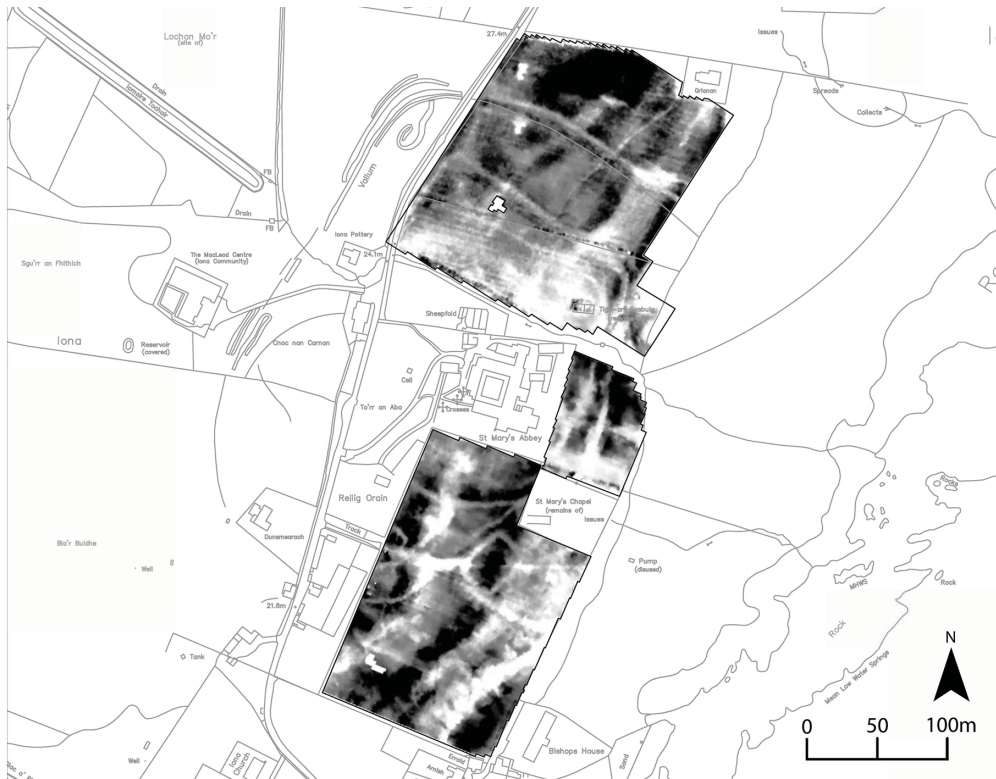


Fig 13. Geophysical survey of the area around Iona Abbey showing new detail of the monastic enclosures. *Source:* after OCGU 2010, fig 4.

One of Thomas's main aims was to locate the monastic *vallum*, and many of his trenches were located with this aim specifically in mind. Work in 1956 formally began when Thomas and Megaw chartered a flight out of Perth on an early June morning to photograph the *vallum* from the air. They were able to trace the outline of the enclosure to north and south of the abbey, and this provided the basis for much of their survey and excavation in the first season. The 1956 season involved only a limited amount of excavation (six trenches) but a great deal of survey, including an early geophysical survey using a Megger Earth Tester to try to trace the *vallum* north of the abbey. When he was digging, the only plan of the *vallum* available was that of Crawford, which assumed a single enclosing ditch.⁹⁹ Thus when Thomas encountered a substantial ditch in Cutting 11a in 1957, he assumed this was 'the *vallum*'. Attempts were made to follow the line of this ditch with Cuttings 11f, 19 and 23 to the north east, and Cutting 48 to the south west, where he confused this ditch with the main ditch later excavated by Barber as Ditch 1. There are excellent drawings of these ditch sections showing an infilling with stones, and Thomas published a reconstruction of the *vallum* as a stone-revetted bank.¹⁰⁰ Trenches were also dug to the north of the abbey, specifically to look for the continuation of this ditch, in Cuttings 25–8, with little success, though a small feature was seen in Cuttings 25 and 27. There are no details of

99. Crawford 1933, 45.

100. Thomas 1971a, 31, fig 9.

these features, and they must have been ephemeral, as a plan by Thomas of what he considered to be the monastic enclosure, which was based on the results from these trenches, shows the ditch as speculative there.¹⁰¹ The strange sinuous line of Thomas's enclosure results from his attempts to marry quite different ditches into one coherent system. There is no doubt that the ditch in Cutting 11 is a real boundary of some kind, even though it has been dismissed as a drainage ditch.¹⁰² It is, however, unlike any of the drainage ditches found elsewhere on the site, which are always stone-lined, and it runs across the slope, making it unsuitable for drainage. It is, however, parallel to the newly discovered stone-built structure excavated in 2017 and 2018.

The complexity of the enclosure and lack of dating precludes the construction of a sequence for the enclosures. Barber suggested that the core of the early monastery lay to the south of Reilig Odhráin and later extended northwards.¹⁰³ This scenario has not gained wide acceptance, and most commentators consider that the core of the early monastery lay around the site of the later abbey church. Thomas's excavations would seem to confirm that early medieval activity was widespread over this area, with most structural evidence and early radiocarbon dates lying to the west and south of the church (see fig 12), and that the enclosure to the south is a later expansion.

Despite the difficulties in defining the monastic enclosure, its form is basically rectilinear, with rounded corners, and open to the sea to the east. This form raises serious questions, as Irish monastic enclosures are almost invariably sub-circular in form, often with clear concentric zones (fig 14). This 'Irish model' has been applied to Scottish monastic sites in the belief that monasticism was spread from Ireland, and therefore Scottish sites should follow an Irish layout.¹⁰⁴ This model has resulted in attempts to force the Scottish evidence for enclosures into a circular straitjacket. For example, at Whithorn, Inchmarnock and Dunning, a circularity has been imposed on short sections of ditches or ephemeral features.¹⁰⁵ In fact all the Scottish monastic sites where we can see the form of the enclosure clearly appear to follow the Iona model rather than the Irish model, with C- or D-shaped sub-rectangular enclosures with one side open to the landscape at rivers (Forteviot, Fortingall, Hoddom, Dunning), scarps (St Blane's) or the sea (Iona, Portmahomack, Kinnedar, Lindisfarne, St Andrews) (fig 15).

As Iona was certainly founded by Irish monks, the question has to be asked: why did they not follow the pattern of their homeland in constructing their monastery? Only two Irish sites appear to have similar non-circular enclosures: Clonmacnoise, open to the River Shannon to the west, and on Lambay Island.¹⁰⁶ If Lambay was the *Rechra* of early sources, as seems likely, it was founded by Ségéne, the fifth abbot of Iona, so it is no surprise that it might follow an Iona pattern.¹⁰⁷ The only historical connection between Iona and Clonmacnoise is Adomnán's story of Columba's visit there, which incidentally mentions the *vallum*, which must have been in existence then.¹⁰⁸ The excavated ditch at Clonmacnoise was even more impressive than that at Iona, at 5–6m wide and 3.75m deep,

101. *Ibid.*, fig 8.

102. RCAHMS 1982, 39.

103. Barber 1981, 361–4, fig 47.

104. Doherty 1985.

105. Hill 1997, 30–5, fig 2.6; Cook 2008, illus 4; Lowe 2008, 252, fig 5.9 (cf fig 9.2).

106. Murphy 2003, illus 26; G Cooney, pers comm, 2017.

107. Herbert 1996, 42.

108. *VC* i.4; Woods 2010.

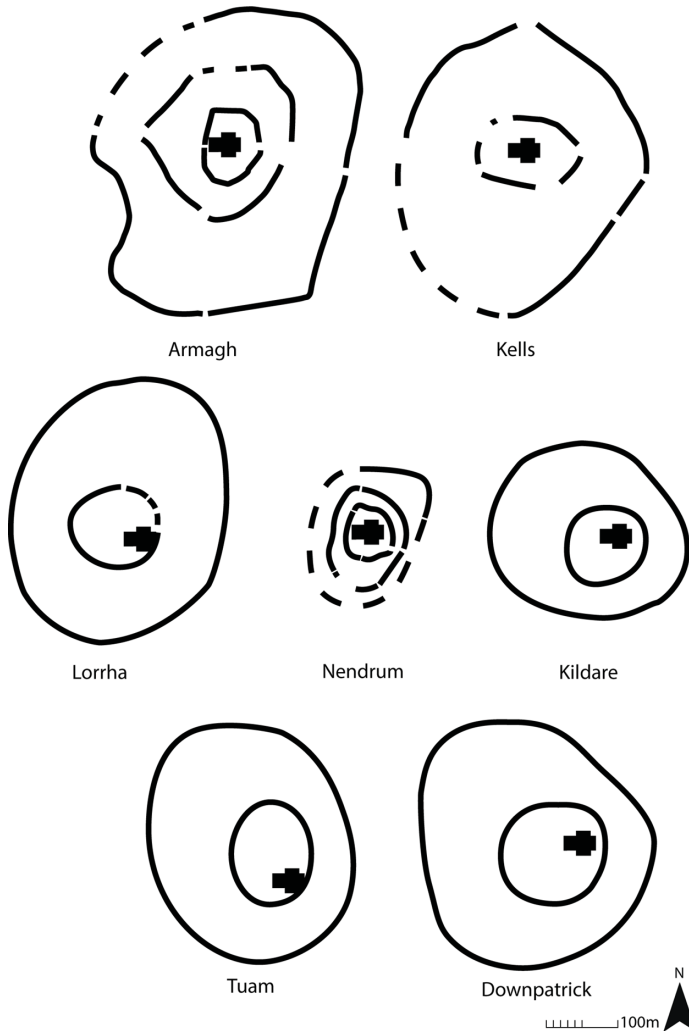


Fig 14. Comparative plans of monasteries in Ireland showing concentric enclosures. *Source:* Heather Christie, after Swan 1994, fig 3.

though its date of construction is unknown.¹⁰⁹ It is possible, given Adomnán's favourable view of Clonmacnoise, that it formed a model for Iona (or vice versa).¹¹⁰ The possibility that there was a pre-existing Iron Age enclosure on Iona that was adapted by the new Columban tenants in the sixth century has been suggested. Radiocarbon dates from an old ground surface beneath the inner bank at Iona suggested this section at least was built in the first century BC to the second century AD, but the new dates dismiss this, confirming that the ditch was dug in the seventh/eighth century (table 2: SUERC-77872).¹¹¹ A second

109. Murphy 2003, 19.

110. Márkus 2009.

111. McCormick 1993, 80.

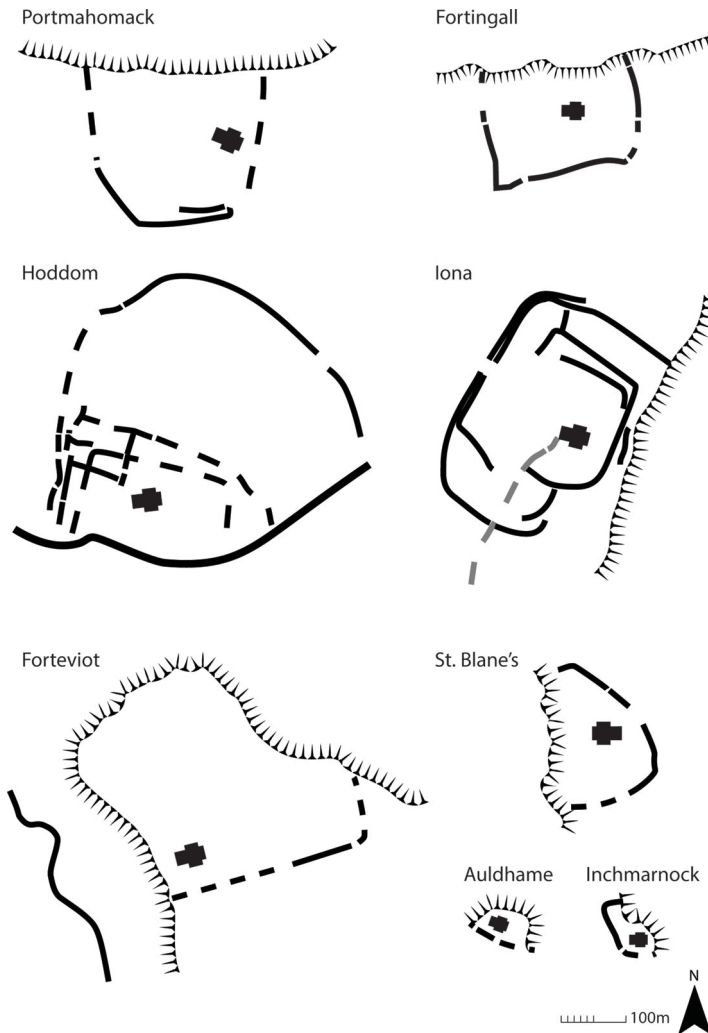


Fig 15. Comparative plans of monastic enclosures in northern Britain showing more rectangular forms with one side open to a scarp slope, shore or river. *Source:* Heather Christie.

possibility is that the sub-square form at Iona is based on English or Continental prototypes, whose monasteries derive their form from Roman forts, town or villa plans. Examples include Glastonbury, the Northumbrian phases at Whithorn, Jarrow/Monkwearmouth and the Church of the Holy Sepulchre in Jerusalem, according to Adomnán's plan.¹¹² This seems a plausible explanation, given the interest in the layout of Jerusalem as a model for monastic life.

Whatever the inspiration for the layout at Iona, it seems that the model was adopted at other monasteries in Scotland, whether associated with the Columban *familia* or not.

112. Meehan 1958, 47; Hill 1997; Cramp 2005, 348–55; Gilchrist and Green 2015, fig 3.3.

Circular enclosures were used around churchyards, cemeteries and smaller religious sites, but there is no certain example around an early monastic site.¹¹³ Of particular interest is Portmahomack, where both the enclosure and the situation of the monastery overlooking the sea and the distant mountains seems like a reflection of the situation of Iona.¹¹⁴ Elsewhere one of the authors has suggested that the open-sided form of these enclosures might reflect an outward-looking predilection to engage with the world (natural or secular), in contrast to the more inward-looking secluded form of the concentric or square monastic enclosures in Ireland and southern England, which encourages a more private contemplation.¹¹⁵

COMMEMORATING THE DEAD

Thomas's excavations might have been assumed to encounter many burials, as is usual when excavating around long-lived church sites. However, only a very few burials were found in his trenches, and a similar pattern was found in other excavations. A cluster of burials were found in Cutting 12 within the cloister. The new radiocarbon dates from charcoal associated with these bones gave an early date (table 2: SUERC-72332; 1477 ± 32 ; cal AD 540–650). This part of the excavation was poorly recorded with no plans, but was described in print by the excavators as a 'mass burial' and 'possibly associated with a Viking raid'.¹¹⁶ However, the excavation daybook speaks of six skeletons as interments, and recently discovered photographs show that these were normal, albeit closely spaced, carefully laid out inhumations.¹¹⁷ This cluster of graves would therefore appear to be a normal monastic burial ground, something not encountered in any other excavations on Iona – and if it is co-eval with the charcoal layer, it must belong to the first phase of Christian use of the site. This would suggest that the earliest church lay nearby, presumably beneath the medieval cathedral crossing. Re-excavation of Thomas's Cutting 11 to the south of the abbey in 2017 enabled dating of three partial skeletons to the tenth to twelfth centuries, definitely pre-dating the Benedictine phase.

In other excavations Reece found what he interpreted as a north–south orientated long cist grave and a possible east–west burial just south of the Old Guest House.¹¹⁸ Redknap found late medieval burials clustered alongside St Columba's chapel, but also two early log coffin burials at a lower level, which have now been dated to the ninth and tenth centuries.¹¹⁹ Elsewhere in Scotland log coffins are a sign of early burials.¹²⁰ A series of graveslabs formerly paved the entrance approach to this chapel (fig 16) and at least one has an inscription, possibly to a known abbot of Iona, Flann (d. 891). It would not be surprising if prominent ecclesiastics of the monastery were buried close to the shrine of their founder saint, and other burials seem to cluster around the proposed site of the early monastic church.

113. For example, Foster 2004, illus 73.

114. cf Carver *et al* 2016, 338.

115. Campbell 2019, 26.

116. Thomas 1957, 10, and 1959.

117. NMRS, AGD/23/636; RCAHMS 1982, 52.

118. Reece 1981, fig V.1.

119. Redknap 1977, 245–7, fig 10.

120. Maldonado 2012.

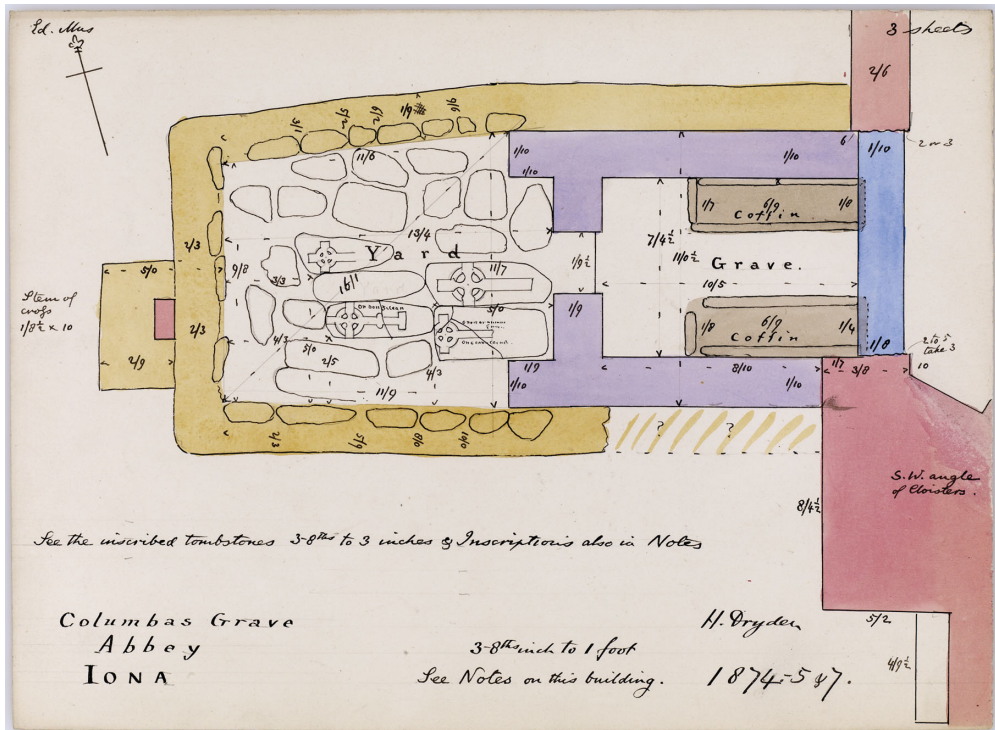


Fig 16. Early medieval graveslabs paving the entrance to St Columba's shrine chapel (walls in purple), as drawn by Henry Dryden in 1874. Note the projecting *antae* and the two stone-lined longists within the chapel. Source: courtesy of Historic Environment Scotland – Society of Antiquaries Scotland Collection.

It is commonly assumed that the Reilig Odhráin was a lay cemetery, given its traditional role as the burial ground of kings and its late-/post-medieval use for burial by local aristocracy.¹²¹ At least six other burial grounds are known on the island (see fig 12). Concentrations of stone burial monuments are known from all three chapel sites along the roadway, but most are recorded from the Reilig Odhráin.¹²² Recent scholarship in Ireland has suggested that these burial monuments may have been produced solely for ecclesiastics, though inscriptions to royal burials are known.¹²³ Ó Carragáin has suggested that in Ireland there was a different concept of sacred space in the early Christian period, with sepulchral and liturgical spaces being kept apart.¹²⁴ This may go some way to explain the relative lack of burial around Columba's shrine if the whole monastery, or, in the case of Iona, the whole island, was sanctified by the presence of the saint's relics. The total lack of grave markers at the secular burial site at Martyrs' Bay might support this idea. Overall there is a dense complex of burial grounds, similar to that seen in many Irish ecclesiastical sites such as Clonmacnoise and Inisiscaltra (another 'Holy Isle'), with differentiation and

121. RCAHMS 1982, 13.

122. Forsyth and Maldonado 2012, 9–10.

123. Ó Floinn 1998, 89; Swift 2003; O'Leary 2015.

124. Ó Carragáin 2010a, 83–4.

segregation of different groups such as women and kings.¹²⁵ Apart from the *Lapis Echodi* stone, which may commemorate a seventh-century king of Dál Riata, almost all the more elaborate and inscribed graveslabs on Iona are late, dating to the ninth to eleventh centuries, and few are inscribed.¹²⁶ This lack of investment in personal memorialisation is in contrast to sites in Anglo-Saxon England (for example, Lindisfarne and Hartlepool) and in Continental Europe, where memorials to named individuals are more common.

The traditional association of the Reilig Odhráin with the burial of 'many kings of Scotland, Ireland and Scandinavia' is controversial and mainly a later medieval invention, but there is little doubt that early medieval kings *were* buried there.¹²⁷ Contemporary Irish annals record the retirement (and presumably deaths) of Niall Frossach, king of Tara (d. 788), and Artgal, king of Connacht (d. 791), and the retirement and death of the Norse king of Dublin, Olaf Sihtricsson, to Iona in 980. The seventh-century *Lapis Echodi* stone may refer to Eochaid Buide, king of Dál Riata (d. 629). Several probably reliable sources claim that Ecgfrith, king of Northumbria (d. 685), was buried on Iona after the battle of Nechtansmere, and a tenth-century poem about the burial of Bruide mac Bile, king of the Picts (d. 692), in 'an old hollow oak trunk' may reflect an older Iona tradition that chimes with the early log burials found beside Columba's shrine chapel.¹²⁸ The later aggrandised traditions of the burial of medieval kings may have built on these earlier realities. Royal burial at major Irish monasteries is better documented and provides corroboration of Iona as a royal burial site. For example, at Clonmacnoise royal burials associated with the kings of Connacht, and later of Clann Cholmáin, took place from at least 663, and grants of land in return for this favour are recorded in the ninth century.¹²⁹ Other kings were buried at the important monasteries at Clonard and Armagh, where there may be references to a separate burial ground for royalty, as is the case at Glendalough.¹³⁰ It has been suggested that the presence of another 'Relickoran' lay burial ground on Inishmurray was a deliberate attempt to mirror the layout of Iona.¹³¹

The later burials at St Ronan's church were all of women and children, though unfortunately the early medieval burials were too badly preserved to sex or date.¹³² The site was an Augustinian nunnery from the thirteenth century, and the post-medieval burials were exclusively female, but whether this was always a burial site for women is unknown, though perhaps likely. Separate burial grounds for royalty and women are known from Irish monastic islands such as Inishmurray.¹³³ Some of the other burial grounds have names suggesting that they were restricted to particular groups, though when these were current is unknown without excavation. *Cladh nan Druineach* suggests the burial place of embroideresses, presumably of ecclesiastical garments, while *Cill mo Ghobhannan*, 'church of my little smith', may have similar artisanal associations, though it may merely be a saint's name.¹³⁴ Several of these early burials sites show a persistence of use indicative of long-standing local traditions: the Reilig Odhráin up to the present day; St Ronan's

125. Ó Carragáin 2010a, 217, illus 212; O'Leary 2015, 131, fig 5.2.

126. Forsyth and Maldonado 2012.

127. Fraser 2016.

128. Redknap 1977, 247; Herbert and Ó Riain 1988, 58–9; Fraser 2009, 242; Maldonado 2019, 117.

129. Ó Floinn 1998, 87–91.

130. Harney 2011, 130–1; Bhreathnach 2014, 128.

131. O'Sullivan and Ó Carragáin 2008, 346.

132. O'Sullivan 1994, 348.

133. Ó Carragáin 2013.

134. Forsyth and Maldonado 2012.

up to the eighteenth century; and Martyr's Bay until at least the fourteenth century.¹³⁵ At least four have associated chapels: St Columba's; St Oran's, St Ronan's; and Cladh an Disirt. Of these, St Columba's and St Ronan's appear from their form to be early medieval, and St Oran's presumably had an early medieval predecessor.

RELICS AND RELIQUARIES

An important part of pilgrimage to Iona, and of life in the monastery there, was the reverence shown to relics of Columba and Adomnán. These relics were the key objects of pilgrimage, as they allowed direct intercession with God through the saint's remains. Adomnán's bodily remains were enshrined in a reliquary (*scrín*) by the early eighth century and Columba's by at least the early ninth century, and reliquaries of both saints were taken backwards and forwards to Ireland during the eighth and ninth centuries.¹³⁶ Relics of vestments and books associated with Columba are known to have been used in rituals from at least the end of the seventh century, and were presumably also enshrined by craftworkers on Iona.¹³⁷ An Old Irish poem, reputed to be by Adomnán, describes a collection of relics, including those of Columba, Donnán of Eigg and other Irish and Continental saints.¹³⁸ The details mentioned – the hair-shirt of Columba, the knee-cap of Donnán – suggests these were real objects, which could have been enshrined at Iona. The only shrine of an Iona relic that certainly survives is the later medieval Irish-made shrine that contained the *Cathach*, the late sixth-century psalter traditionally believed to have been written by Columba. Despite the evidence from the sculpture and manuscripts that highly skilled craftworkers were present on Iona, until now there has been no physical evidence of the types of high quality ecclesiastical metalwork known from Ireland.¹³⁹ New evidence from Thomas's excavations can allow us to be sure that there were metalworkers with the necessary skills to make shrines on Iona in the eighth/ninth centuries and later. These copper alloy metalwork artefacts include a lion figurine (fig 17) and a human head (fig 18), which are described in detail elsewhere with other finds.¹⁴⁰ Fine metalwork was certainly being produced on Iona, as fragments of typically early medieval crucibles and moulds have been found scattered through various excavation trenches, though no centre of production has yet been encountered.

The eighth/ninth-century lion figurine, although unparalleled, resembles finials on some house-shrine reliquaries and may have come from a larger type of reliquary. A contemporary triangular possible shrine fitting from Armagh, itself unparalleled, shows that there were objects of forms unknown as complete examples.¹⁴¹ It displays some characteristics of the lions in the *Book of Kells*, and lions are prominently featured on Iona crosses such as St Martin's and the Kildalton Cross on Islay, suggesting it was made on Iona. The human head figure, which appears to have been ripped from a larger piece, has close

135. Reece 1981, 106; RCAHMS 1982, 150.

136. Bannerman 1993; Sharpe 1995, 374; Clancy 1996, 2004; Bourke 1997b; Ó Floinn 1997, 137, 148.

137. Ó Floinn 1997, 149.

138. Carney 1983; cf Ó Floinn 1997, 148.

139. Ryan 1989.

140. Campbell *et al* 2019.

141. Gaskell-Brown and Harper 1984, fig 11, 33.



Fig 17. Lion figurine in copper alloy (SF0997) from Thomas's excavations in 1959.
Photograph: © Historic Environment Scotland.

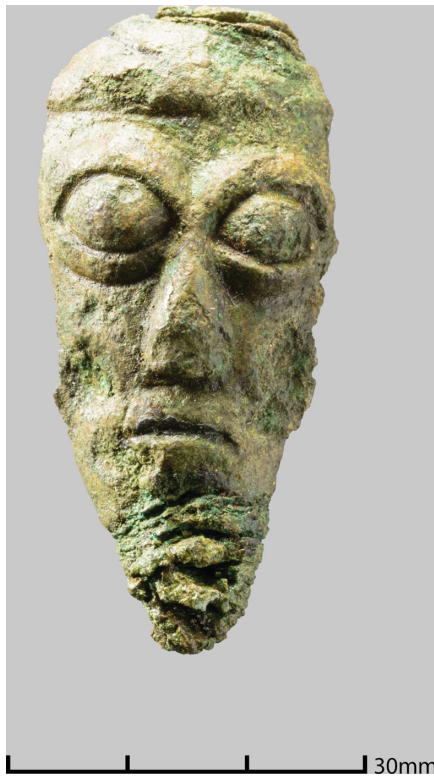


Fig 18. Copper alloy human head (SF 0962) from Thomas's excavations in 1959.
Photograph: © Historic Environment Scotland.

parallels to the figures on the twelfth-century St Manchan's shrine.¹⁴² This suggests that relics were being enshrined or re-enshrined around the twelfth century, possibly replacing earlier reliquaries removed or destroyed during the Viking raids. Later in the medieval period there are references to an arm-reliquary of Columba on Iona in the fifteenth century.¹⁴³ This type of reliquary is normally a late form, suggesting there was a process of continuing renewal of enshrinement on Iona, but it has been suggested that an arm-shrine was in existence in the seventh century.¹⁴⁴ Patrick Geary has discussed many Continental examples of this process whereby 'enthusiasm tended to wane over time, and the value of the relic had to be renewed periodically', and one can assume a similar process at work in Iona.¹⁴⁵ Apart from these portable reliquaries, it is possible that the unusual box-bases of St John's, and probably St Oran's, Cross functioned as a sort of reliquary container, as it is difficult to account for their complex construction otherwise. It is possible that one of these crosses was erected to commemorate the martyrdom of Blathmac mac Flainn in 825 – given that a cross is known to have been erected to commemorate an incident on the day Columba died, and that Blathmac's martyrdom was famous enough to be commemorated in Walafrid Strabo's poem.¹⁴⁶ Thus the relics of Iona also formed part of the complex ritual landscape of shrines, chapels, crosses and the intangible memories and stories associated with the saints and martyrs of Iona.

STRUCTURES

Although Thomas's excavation strategy precluded the identification of most timber structures, one significant stone structure was revealed in Cutting 11d. Here, a substantial wall of drystone construction, with a battered face, ran in an arc towards the abbey buildings (fig 19). This construction is unlike anything else seen on Iona, and re-excavation of Thomas's trench in 2017 has enabled it to be dated to before the eighth century and show that it had been demolished by the tenth century. Further excavation should reveal its nature, but it looks like the revetment for a level platform to support a building. Chalmers, the architect in charge of the restoration of the cathedral, reported the discovery of 'a large stone building with rounded gables, running north–south under the nave of the church', unfortunately with no further details or plans.¹⁴⁷

Other structural evidence in stone was restricted to substantial slab-lined drains, which form an extensive system around and within the abbey, clearly designed to help with drainage problems caused by iron-panning on the raised beach gravels.¹⁴⁸ These have been assumed to be of later medieval date, but the new date from the drain in the main *vallum* ditch shows that some at least may be early medieval. A series of drains found in the various trenches of Cutting 60 to the west of Tòrr an Aba were of different character and are almost certainly late field drains, as the estate map of 1769 shows an area of standing water here.

142. Murray 2014.

143. Ó Floinn 1997, 144.

144. Márkus 2017.

145. Geary 1994, 215.

146. *VC* iii.23.

147. Anon 1915.

148. Barber 1981, 287; RCAHMS 1982, 49.



Fig 19. Drystone structure exposed by Thomas in 1957 south of the abbey, and re-excavated in 2017, looking north. *Photograph: authors.*

Apart from a 10m-long sill-beam or plank trench with associated postholes found in Cutting 38, which has been compared to the buildings at Yeavinger, very few signs of buildings were found in Thomas's excavations.¹⁴⁹ The Cutting 38 building is significant, however, as it is the only rectilinear timber building found on the site so far, and has been claimed by Brian Hope-Taylor (who saw photographs taken at the time of excavation, which no longer survive) to be identical to his Yeavinger Style IV buildings with plank walls (fig 20). Recent excavations at Rhynie have produced similar plank-built buildings, which date to the sixth century, supporting Hope-Taylor's contention that this style of building was a British rather than Anglo-Saxon tradition.¹⁵⁰ The important find of a bronze human head (SF0962) came from near this structure.

Other structural remains were encountered within the cloister area in Cutting 17. Here the excavations in 1958 were directed by Elizabeth Burley and seem to have been recorded to a better standard than most of the other trenches, though unfortunately most of the drawings have been lost. Burley's account describes a complex sequence of deposits in the southern part of the area, around Cutting 17f, with stone settings, cobbling, burning layers and spreads of sand and clay interpreted as the remains of 'huts'. There seems little doubt these deposits represent structural activity in this area, though its nature remains obscure.

However, other excavations on Iona have revealed evidence of a large post-built round-house, post-pad rectangular buildings and other possible round post-built structures.¹⁵¹ These structures all fall in a linear zone that lies to the west of St Columba's chapel, and presumably also to the west of the original monastic church (see fig 8). The lack of

149. Hope-Taylor 1977, 237–8.

150. *Ibid*; Noble *et al* 2013, 1,146.

151. Barber 1981, fig 13; Reece 1981, fig V.1.

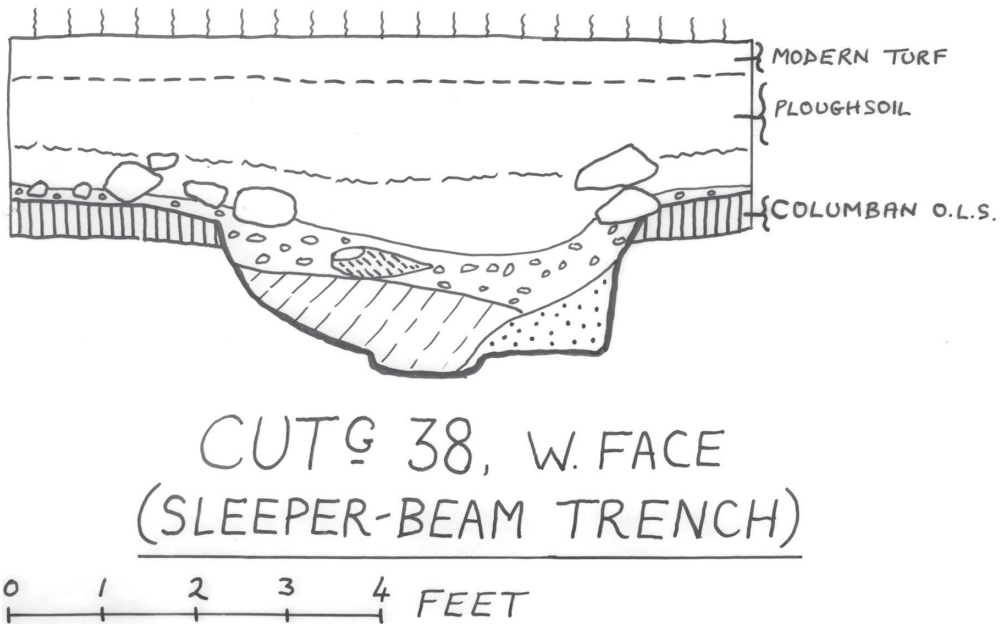


Fig 20. Original section drawing of sill-beam slot in Thomas's Cutting 38. *Source:* Charles Thomas.

excavations in the eastern part of the site precludes any definite statements about occupation in this area.

A group of window glass sherds (fig 21) was one of the most unexpected finds from Thomas's assemblage, and was not recognised by Thomas as being early medieval. This is not surprising as early medieval window glass from Britain was only recognised with the excavations at Jarrow.¹⁵² The manufacturing features of the glass – a soda-lime-silicate glass, cylinder-blown with fire-rounded straight edges and grozed sides – are matched by the glass from Jarrow and other monastic sites in England and is easily distinguished from later medieval window glass. In Scotland the only other early medieval window glass is from the Northumbrian-period occupation at Whithorn, and in Ireland there is no known window glass of this date.¹⁵³ Especially close in colour and appearance is the seventh-century window glass from Glastonbury Abbey, which was probably manufactured there.¹⁵⁴ Although the Iona glass cannot be dated precisely, it must fall in the period from introduction of window glass to Britain in the seventh century to the late ninth century, when glass compositions changed to potash-rich unstable types that rarely survive. This, of course, is the period of the first flowering of Iona as an artistic centre. The implication of the window glass is that some building with a glazed window existed on Iona in the early medieval period, possibly St Columba's shrine chapel. The evidence from Whithorn shows that glazed windows could be associated with clay and timber buildings at this period.¹⁵⁵

152. Cramp 1970, 2000.

153. Cramp 1997, 326–32, fig 10.26.

154. Evison 2000; Gilchrist and Green 2015, 236.

155. Hill 1997, 167.

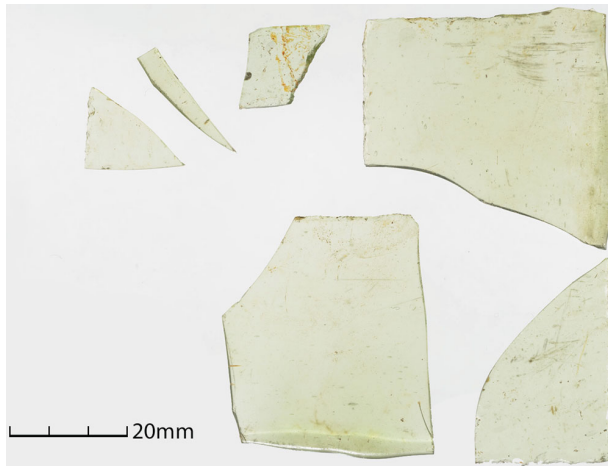


Fig 21. Sherds of early medieval window glass (SF1023), forming rectangular quarries, with rounded and grozed edges. *Photograph:* © Historic Environment Scotland.

CRAFTS

As monasteries such as Clonmacnoise and Portmahomack have produced evidence of zoning of craft activities, it is possible that similar zoning was present on Iona. Only a small amount of craftworking debris was recovered from Thomas's excavations, but this evidence can be combined with other excavation finds to give some preliminary ideas on the layout of craft activities. From Thomas's excavations, crucibles, tuyères and moulds for non-ferrous metalworking were found south of the abbey in Cuttings 49a, 62 and 11b–d, with an outlier as a stray find 100m to the north of the abbey. There are more moulds and a glass rod from Barber's excavations close to these finds in Cutting 49. Another group of finds are on the north of the site, with crucibles from the infirmary and moulds for glass studs from the carpenters' shed.¹⁵⁶ There is extensive evidence for iron-working with spreads of slag in the south-west and south sectors of the abbey precinct. Re-excavation of some of these deposits in 2017 enabled them to be dated to the eighth century, providing a parallel to Irish sites such as Clonfad, where brazed handbells were being produced on an industrial scale in the same period.¹⁵⁷ As well as their practical use, early ecclesiastical bells have multiple symbolic meanings relating to the power of the monastic voice.¹⁵⁸ Compared to major metalworking sites such as Dunadd, or monasteries such as Portmahomack, this is a relatively small quantity of material, but it seems clear that little or any of this material is *in situ*, and that the metalworking areas must lie in more peripheral locations, perhaps in the fields around the abbey. The nature of the crucibles and stud moulds, however, place them firmly in the early medieval period, making it certain that fine metal- and glass-working was taking place within the monastery.¹⁵⁹ Thomas's finds of the lion mount and human head has shown that complex metalwork was being

156. Reece 1981, fig III.1b; McCormick 1992.

157. Stevens 2012.

158. Overbey 2012, 115–45.

159. McCormick 1992, 210; Graham-Campbell 1981, 24.

produced on the site, almost certainly for shrines or reliquaries, in the mid and late first millennium. It has long been suggested that the elaborate boss in the centre of the west face of St John's Cross held a metalwork mount, and we can now be confident that such metalwork could have been produced on Iona.¹⁶⁰

THE NORSE IMPACT ON IONA

In older and popular accounts of Iona, the monastery is seen as being destroyed by Viking attacks and then abandoned, leading to its replacement by Kells as the head of the Iona *familia* in the early ninth century. Norse attacks are certainly documented in AD 795, 802, 806, 825 and 986, but modern assessment of the textual evidence suggests that Iona continued to be occupied and play an important role throughout the later first millennium.¹⁶¹ The Norse in this area were converting to Christianity by the tenth century and possibly earlier, and in 980 the Norse king of Dublin, Olaf Sihtricsson (*Amlaíb Cuarán*), came to Iona as a penitent and was buried there soon after.¹⁶² For the Hebridean Norse, Iona became the 'holy isle', illustrated by the respectful visit of the Norwegian king Magnus Barelegs to Columba's shrine in 1097 and by the strange saga account of the washing ashore of the coffin of one Hallfred Troublesome-poet (*Hallfreðr vandræðaskáld*), whose pagan grave-goods were transformed into church furnishings, while his body 'was carried to the church and buried with honour'.¹⁶³

New archaeological work supports the view that there was a substantial Norse presence on Iona. Excavations in 2012 and 2013 south of the abbey precincts produced an outstanding Hiberno-Norse tenth-century pin and other indications of Norse-period occupation, such as a steatite vessel and imported hone, all possibly associated with a beach market.¹⁶⁴ Other Hiberno-Norse pins have recently turned up in unpublished watching briefs within and near the abbey. As well as the Norse-period metalwork found in Thomas's excavations, older recovery of gold and silver artefacts of the tenth to twelfth century reinforce the wealth of the site at this late period.¹⁶⁵ A decorated strap-end found unstratified in the excavations of St Ronan's chapel, and whose significance was not recognised in the original report, belongs to a group of strap-ends found in Norse-period burials in western and northern Insular contexts.¹⁶⁶ In Scotland examples are known from Cnip and Auldhame, while other examples come from Workington, Dublin and Cumwhitton. These have been attributed to the ninth or early tenth century and are believed to have been manufactured in the Atlantic area. They have been described as harness mounts or belt fittings.¹⁶⁷ The Iona example differs from most others in this group in that the sides are straight, rather than being waisted, with expanded ends, but the overall design and the multiple rivets show it is closely related to this group of artefacts. A function as a female belt set might be appropriate for the context within the female cemetery. The unusual form of

160. RCAHMS 1982, 203.

161. Dumville 1997; *contra* RCAHMS 1982, 47–9; Clancy 2004, 2011, 2013.

162. Márkus 2017, 232–6.

163. Einarsson 1977; Graham-Campbell and Batey 1998, 88; Whaley 2002, 108.

164. Will 2012, 2014; Campbell and Batey 2017, 164.

165. Curle 1924; Stevenson 1951; Graham-Campbell 1995.

166. O'Sullivan 1994, 336, illus 5.

167. Batey 1987, in Welander *et al* 1987, 170.

this example and the decoration, which is paralleled in the *Book of Kells*, raise the possibility that it was made on Iona.

Recent assessment of the sculptured stones from Iona has shown that many of them date to the ninth to eleventh centuries.¹⁶⁸ These include important monuments such as St Matthew's Cross, ring-headed crosses, small free-standing crosses, a rune-inscribed cross-slab and its partner, and a possible import from the Isle of Man that depicts a ship with Norse affinities.¹⁶⁹ The quantity and quality of these monuments must mean that Iona continued to be a focus for burial throughout the Norse period, and was still an economically viable and thriving artistic centre.

DISCUSSION

The results of Thomas's excavations, combined with a survey of other excavations, enables us to obtain for the first time a clear picture of the early medieval monastic layout on Iona, and relate this to the world view of the Christian monks there as expressed in Adomnán's writings. What follows is an attempt to provide an interpretation of the layout and functions of the monastery, and to interpret them in the context of recent work on Insular monasteries.

The last twenty years has seen the publication of major excavations on early monastic sites at Whithorn, Monkwearmouth/Jarrow, the Isle of May, Inchmarnock, Hoddum, Auldhame, Glastonbury and Portmahomack.¹⁷⁰ These publications, and other work at sites such as Lindisfarne, Clonmacnoise, Hartlepool, Flixborough and Brandon, have given us a new understanding of the archaeology of early monasteries and raised issues about how to characterise monastic settlements in the absence of documentary evidence. Martin Carver has suggested a suite of characteristics necessary for us to describe a site as monastic: an enclosure, a church, stone markers, relics, burials, book production, food production, metalworking, church plate, an estate and ancillary buildings such as mills and barns. Of course, at Iona there is overwhelming documentary evidence that it was monastery, but in fact the archaeological evidence supports the presence of almost all of these characteristics.¹⁷¹

With this article it has been shown that Iona has a multi-focal type of burial landscape similar to that found on other important early monastic and pilgrimage sites in Ireland, such as Armagh and smaller sites like Inishmurray and Iniscealtra.¹⁷² What this complex picture of burial reveals is a sacred landscape where even burial at the island's landing place could be seen as special. This supports the authors who have interpreted Adomnán's writings as indicating that the whole island of Iona was considered sacred, the outermost of three concentric circles of increasing sanctity, *sanctus*, *sanctior*, *sanctissimus*.¹⁷³

This sacred landscape of chapels, relics, crosses, burial grounds and monastic enclosures formed the backdrop to daily rituals and liturgy of the monastic community,

168. Forsyth and Maldonado 2012, 40.

169. RCAHMS 1982, nos 68–9, 77–9, 84, 85–94, 95.

170. Hill 1997; Cramp 2005; Lowe 2006, 2008; James and Yeoman 2008; Gilchrist and Green 2015; Carver *et al* 2016; Crone and Hindmarch 2016.

171. Carver 2009.

172. O'Leary 2015.

173. MacDonald 2001; Jenkins 2010.

processions on holy days, pilgrimage visits and burial processions.¹⁷⁴ The central connecting element for all these activities was the paved roadway, unique in an Insular context. Later devotional practices that can be seen to be associated with the monuments include a variety of elements. The cross-base known in Gaelic as *Clach Bràtha* ('Stone of Judgement' or 'Doom') in the Reilig Odhráin has a worn hollow where a stone would be rotated as part of the ritual.¹⁷⁵ A rectangular basin outside the west door of the abbey was known as 'the cradle of the north wind'. It was traditionally used for foot-washing by pilgrims, and has parallels on Irish pilgrimage sites such as Inishmurray, Tory Island and Glendalough.¹⁷⁶ It is possible that this is the basin referred to by Adomnán where the monks washed their hands and feet before entering the church.¹⁷⁷ The base of St Martin's Cross has an unusual projection that could have been used by pilgrims to kneel.¹⁷⁸ Finally, the well, positioned just outside the west door of the medieval abbey, is in a highly unusual position for a later medieval ecclesiastical well. It is possible that the awkward location indicates the retention of a pre-existing cult focus, possibly established in prehistoric times, and that it retained its focus in Christian times or was re-imagined then perhaps with a baptismal function (see below). A similar early well at Glastonbury Abbey has been posited as a possible early cult focus, as have the springs at Wells Cathedral and the well at Glasgow Cathedral.¹⁷⁹ While some of these devotional practices are not documented until the post-medieval period, they give hints of the type of ritual practices that could have taken place within this landscape of boundaries, chapels, burial grounds and crosses.

It has been discussed above how this layout of a processional way leading towards Columba's shrine chapel appears to deliberately echo a pilgrim's journey to Jerusalem leading to the tomb of Christ – a scene familiar to monks on Iona through Adomnán's *De Locis Sanctis*. This is particularly apt given Jane Hawkes' interpretation of the figurative schemes of St Martin's Cross as 'figuring salvation'.¹⁸⁰ The scenes are only on the west face of the cross, seen on the right as one approaches the sacred core of the site along the roadway. A comparison of the diagrammatic layout of the Church of the Holy Sepulchre, preserved in several early versions of the manuscript, with the layout of early features on Iona reveals possible parallels (fig 22). The position of the early monastic church on Iona is unknown, but most accept that the Benedictine cathedral was built over the site of the earlier structure, as at many other sites.¹⁸¹ If that early church is taken as a parallel to Constantine's basilica church on Golgotha, Columba's shrine chapel mirrors the location of Christ's tomb situated to the west of the church in the Anastasis, as was pointed out by Ó Carragáin.¹⁸² Adomnán's plan shows the basilican church with only a west door, mirroring the west doorways of early Irish churches familiar to him, though he knew it also had an east door.¹⁸³ Further parallels can be suggested. The site of the crucifixion on Golgotha, which in Adomnán's time was preserved as a cleft rock with a cross of silver where the True Cross had stood, mirrors that of St John's Cross, which may be taken as a metaphorical

174. cf Coleman and Eisner 1994 for an example in Palestine.

175. Sharpe 2012, 234–7.

176. O'Sullivan and Ó Carragáin 2008; Harney 2011, fig 6.6.17; Sharpe 2012, 239.

177. *VC* ii.45.

178. RCAHMS 1982, 215, no. 97.

179. Rodwell 1996, 116; Driscoll 2002, 5; Gilchrist and Green 2015, 435.

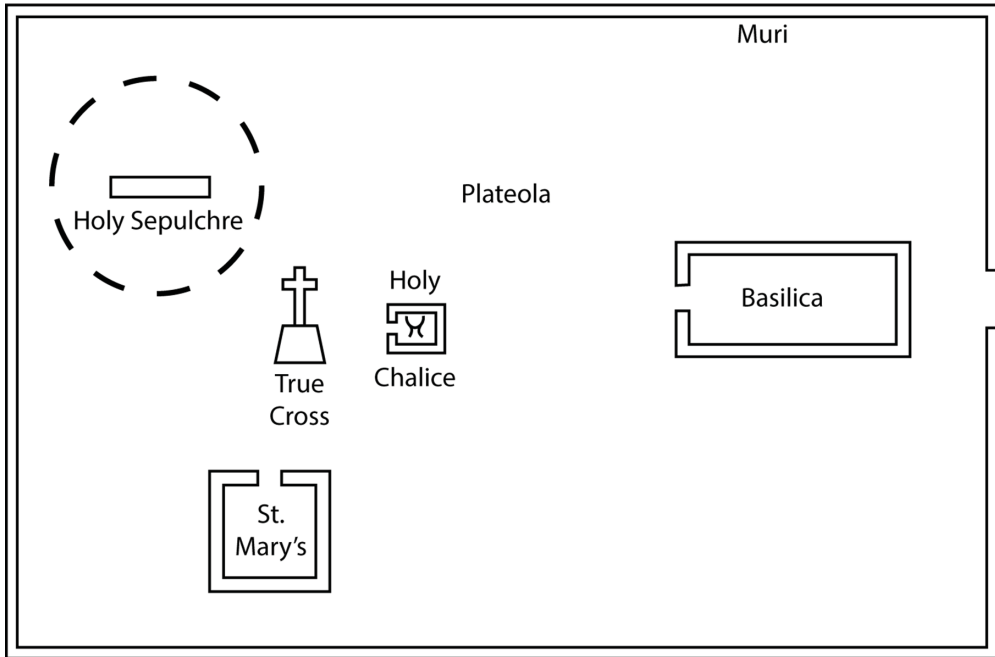
180. Hawkes 2005.

181. Sharpe 1995, 70; Foster 2015, 82.

182. Ó Carragáin 2010a, 79.

183. *Ibid*, 35.

(a)



(b)

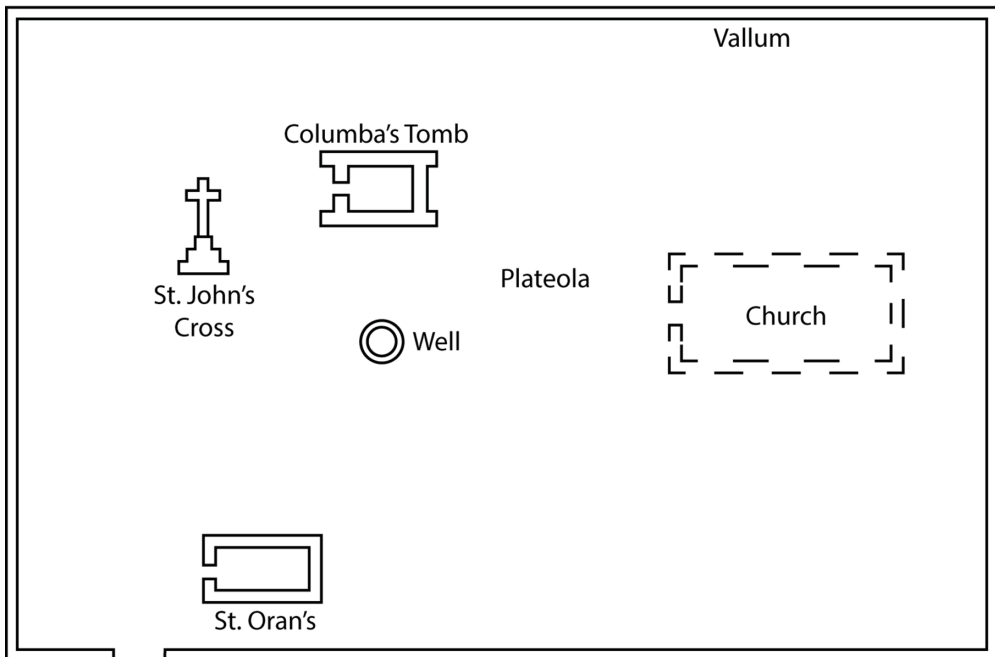


Fig 22. The idealised layout of: (a) Jerusalem as imagined by Adomnán in his *De Locis Sanctis*; compared to (b) the early medieval layout at Iona. Source: Heather Christie.

representation of the True Cross. The possibly slightly later St Martin's Cross, with its stepped solid rock base, may also be intended to reflect the stone of Golgotha.¹⁸⁴ Dorothy Kelly has argued that the composite stone crosses at Iona (St John's and St Oran's) were specifically designed with Arculf's description of the tripartite nature of the wooden True Cross (by that time located in Constantinople) in mind.¹⁸⁵ It is also possible that these three crosses were at some point (their precise dates are disputed) conceived as a reflection of the three crosses on Golgotha at the time of Jesus' crucifixion. At Jerusalem, in front of the west door of the basilica church, there was a paved courtyard (*plateola* on the plan and text) that corresponds to a similarly named area in Adomnán's account of daily life at Iona.¹⁸⁶ This area continued to be paved and re-paved into the late medieval period, successive undated phases being seen in Redknapp's excavations.¹⁸⁷ Recent geophysical survey using ground-penetrating radar (GPR) shows that this area of paving is extensive, forming a paved courtyard that is difficult to parallel on other early monastic sites. In Jerusalem, to the south of this *plateola*, lies the chapel of St Mary, which corresponds in its position to St Oran's chapel site. Finally, within the area in front of the basilica church was the small shrine of the Chalice (*'exedra, in qua calix Domini'*), which corresponds to the position of the well at Iona, perhaps both symbolising life-giving liquids. Although this parallel might seem far-fetched, there is some confirmation in that the chalice seen in Insular depictions of Paul and Anthony is replaced in later medieval depictions by a fountain or spigot.¹⁸⁸

While this symbolic arrangement might seem debatable, there is clear evidence that elsewhere in early medieval Europe deliberate attempts were made to create simulacra of Jerusalem in the West. In Rome the church of Sancta Croce in Gerusalemme, reputedly founded in the fourth century by Helen, mother of Constantine, was originally termed just *in Hierusalem* and had relics of the True Cross, and soil brought from Jerusalem scattered on its floor to recreate a Jerusalem in Rome.¹⁸⁹ Similarly, at San Stefano (in Bologna) the fifth-century church of the Holy Sepulchre was designed to mimic the Jerusalem Holy Sepulchre. It is important to stress that these were not necessarily 'copies' of the Holy Sepulchre in the modern sense (though small models and depictions on *ampullae* were made), but more general references to an imaginary scheme.¹⁹⁰ Carol Neuman de Vegvar has shown how the architectural features of the Edicule were used to construct the framing arcades of the canon tables in early Insular gospel books such as the *Book of Kells*, suggesting that the reader's physical turning of the pages of this section of the manuscript paralleled the experience of pilgrims moving through the sacred spaces around Christ's tomb.¹⁹¹ Given Adomnán's interest in emphasising the parallels between Columba and Christ in *Vita Columbae*, with an emphasis on salvation, and his interest in Jerusalem, both as a pilgrimage centre and as a theological concept, we believe it is not too great a step to see here a deliberate attempt on Iona to reproduce Jerusalem

184. Meehan 1958, 49; Wilkinson 1971, 43, illus 45; Ó Carragáin 2010a, 79.

185. Kelly 1991, 138–9.

186. Meehan 1958, 51; for a fuller discussion of the word *platea/plateola* as a public space, see MacDonald 1984, 1997; Swift 1998; Jenkins 2010, 97; Picard 2011.

187. Redknapp 1977, figs 3, 4.

188. Thomas 2013, 87.

189. Márkus 2017, 182.

190. Krautheimer 1942; Morris 2005, 62–3.

191. Neuman de Vegvar 2007b, 249.

'at the ends of the earth'.¹⁹² In particular, Adomnán seems especially concerned (*'mihi diligentius interroganti'*) to discover from Arculf a number of details about Jerusalem: that, despite the splendour of the Anastasis and the basilica, Christ's mausoleum itself was undecorated and measured 7ft in length; that Christ's tomb was on the *north* side of the Edicule; the relative layout of the church buildings; and that a courtyard existed between the basilican church and the Anastasis.¹⁹³ Was he already thinking of how a parallel arrangement for the tomb of Columba might be constructed on Iona?

CONCLUSION

What this article has tried to show in this discussion is how a combination of textual narratives, biblical exegesis, manuscript illustration, stone monuments and physical structures were used to create a liturgical space where Iona and Jerusalem became the same. Thomas O'Loughlin has argued that liturgy, for the early medieval mind, was able to 'collapse space and time', enabling monks to believe that they were actually in the Jerusalem of Christ and that their own spiritual journey mirrored that of Christ.¹⁹⁴ On Iona, this spiritual journey could be expressed physically, through procession along the Street of the Dead, intellectually, through contemplation of the structures of the canon tables in the *Book of Kells*, or emotionally, through recitation of psalms such as Psalm 47.¹⁹⁵ Although these spiritual journeys were journeys to personal salvation, subtle political messages that promulgated the importance of Iona were embedded in the choice made to promote Jerusalem as the primary Christian site without undermining the allegiance of Iona to Rome as the head of the Church. What is particularly interesting in the Iona example is how there was no deliberate attempt to imitate the monumental church buildings of Rome or Jerusalem, but there was a focus of devotion on upstanding stone crosses embedded in the landscape. The resulting liturgical landscape was unique to these remote areas, while still embodying an underlying theological structure that linked them to the major Christian centres.

Although Thomas's excavations were very much a product of their time, and suffer the deficiencies of haphazard recording and curating, they have produced much important information about the early medieval monastery. We now know that more of the early medieval layout of the site survived, though encased in later accretions, that complex metalworking was taking place, including the manufacture of shrine fittings, and that the site prospered in the Norse period, despite Viking raids. What is also becoming apparent is that the layout and internal organisation of monastic Iona was both a deliberate act to recreate a mirror of Jerusalem based on biblical exegesis and travellers' accounts, while at the same time allowing the construction of new physical structures for new devotional practices, including bounding enclosures, a paved road, stations of pilgrimage based on impressive sculptured stone crosses, stone-built shrine chapels and decorated reliquaries. This explosion of new practices seems to have taken place in the eighth century – it has been plausibly argued that the early Iona crosses are of mid-eighth century date, and that they and the shrine chapel may have been built for the translation of Columba's relics around

192. O'Reilly 1997; Hawkes 2005.

193. cf O'Loughlin 1992, 76–7, on Adomnán's interest in Adam's tomb at Hebron; Meehan 1958, 45–51.

194. O'Loughlin 2010, 186.

195. O'Loughlin 2004, 136.

the same period.¹⁹⁶ These physical symbols were reinforced by textual narratives centred around the founding saint, which allowed pilgrims to link their own physical journey to Columba's shrine to their own spiritual journey to personal salvation. These narratives were presumably embedded in oral traditions that could be performed at relevant sites, increasing the dramatic impact of the journey. Adomnán makes a specific point in his *Life* of relating how stories about the monastic founder were collected from eyewitnesses, and gives details of who these persons were.¹⁹⁷ Places of burial, probably associated with different secular groups, grew up organically around this routeway and its associated chapels as the fame of Columba's burial place grew, with the retirement and burial of kings there throughout the later first millennium. Elements of the specific layout at Iona, such as the sub-rectangular enclosure form and the paved road, influenced other monasteries in Scotland, either directly as foundations of the Iona *familia*, or indirectly through its influence as the major ecclesiastical centre of the period. While some elements such as the shrine chapel and the construction of free-standing crosses may have also influenced Irish practices, in Ireland the traditional layout of concentric sub-circular enclosures continued throughout the first millennium.

The other major results of Thomas's excavations relate to chronology and craftworking. The new radiocarbon dates confirm that the locus of early activity from at least the sixth century lies around the site of the medieval cathedral and covers a wide area. The identification of the wattle structure on Tòrr an Aba as Columba's writing hut referred to by Adomnán is exciting in itself, and gives a specific location for the production of one of the earliest surviving Insular manuscripts, the *Cathach* of Columba. Hints of pre-Christian activity on the site raise the possibility that this was a site of long-standing ritual focus. The new metalwork finds show previously unknown evidence for complex metalwork items, probably shrines, being created at Iona, incorporating iconography seen in the sculpture and manuscript art. The presence of a fragment of an eleventh/twelfth-century shrine indicates continuing veneration on the site, and possibly continuing production of complex metalwork items throughout the later first millennium.

The publication of Thomas's excavations has spurred a new phase of interest in the archaeology of Iona, with the formation of an Iona Research Group in 2013, the production of an Iona Research Strategy, new research excavations in 2017 and 2018, plans for further investigations on old material and several new research projects. Given the influence of Iona on Thomas's thinking on early medieval Christian archaeology, perhaps that is a fitting tribute for his excavations.

ACKNOWLEDGEMENTS

Many colleagues have contributed their recollections of the Iona excavations, particularly the late Charles Thomas himself, Elizabeth Fowler, Peter Fowler, Vincent Megaw and Richard Reece. We are grateful also to Stephen Driscoll, Nancy Edwards, Ian Fisher, Katherine Forsyth and Peter Yeoman for additional material. Historic Environment Scotland gave generous financial support with the Iona publication project and recent excavations. Our thanks as well to Derek Alexander and the National Trust for

196. Fisher 2001, 16; Ó Carragáin 2010a, 78.

197. Sharpe 1995, 55–6.

Scotland for help and for permission to reproduce fig 13, and to Heather Christie for preparing the illustrations. Very helpful comments and corrections on drafts of this article were given by Thomas Clancy, Sally Foster, Michael Given and Gilbert Márkus, though of course the views expressed here are the authors' own.

ABBREVIATIONS AND BIBLIOGRAPHY

Abbreviations

CBA	Council for British Archaeology, York
HS	Historic Scotland
<i>Innes Rev</i>	<i>The Innes Review</i>
LUP	University of Liverpool Press, Liverpool
OCGU	Orkney College Geophysics Unit, Orkney
<i>Proc Soc Antiq</i>	<i>Proceedings of the Society of Antiquaries of London</i> , London
<i>Proc Soc Antiq Scotl</i>	<i>Proceedings of the Society of Antiquaries of Scotland</i> , Edinburgh
RCAHMS	Royal Commission on the Ancient and Historical Monuments of Scotland
SUERC	Scottish Universities Environmental Research Centre
<i>Trans Scott</i>	<i>Transactions of the Scottish Ecclesiological Society</i>
<i>Eccles Soc</i>	
VC	<i>Vita Columbae</i> (Sharpe 1995)

Bibliography

- Aist, R 2019. *From Topography to Text: the image of Jerusalem in the writings of Eucherius, Adomnán and Bede*, Turnhout, Brepols
- Aitchison, N 1994. *Armagh and the Royal Centres in Early Medieval Ireland: monuments, cosmology and the past*, Boydell & Brewer, Woodbridge
- Anon 1915. 'Abstract of proceedings', *Trans Scott Eccles Soc*, 4, xx–xxi
- Bannerman, J 1974. *Studies in the History of Dalriada*, Scottish Academic Press, Edinburgh
- Bannerman, J 1993. 'Comarba Coluim Chille and the Relics of Columba', *Innes Rev*, 44, 14–47
- Barber, J W 1981. 'Excavations on Iona, 1979', *Proc Soc Antiq Scotl*, III, 282–380
- Barrowman, R 2011. *The Chapel and Burial Ground on St Ninian's Isle, Shetland: excavations past and present*, *Soc Medieval Archaeol Monogr* 32, Society for Medieval Archaeology, London
- Bhreathnach, E 2014. *Ireland in the Early Medieval World AD 400–1000*, Four Courts Press, Dublin
- Blackwell, A (ed) 2019. *Scotland in Early Medieval Europe*, Sidestone Press, Leiden
- Blair, J 2005. *The Church in Anglo-Saxon Society*, Oxford University Press, Oxford
- Bourke, C (ed) 1997a. *Studies in the Cult of Saint Columba*, Four Courts Press, Dublin
- Bourke, C 1997b. 'Insignia Columbae II', in Bourke 1997a, 162–83
- Bradley, J 1998. 'The monastic town of Clonmacnoise', in King 1998, 142–56
- Breen, T C 1988. 'Excavation of a roadway at Broomhill Bog, Co Offaly', *Proc Roy Ir Acad*, 88C, 321–9
- Bronk Ramsey, C 2017. 'Methods for summarizing radiocarbon datasets', *Radiocarbon*, 59 (2), 1,809–33
- Campbell, E 2007. *Continental and Mediterranean Imports to Atlantic Britain and Ireland, AD 400–800*, CBA, York
- Campbell, E 2019. 'Peripheral vision: Scotland in early medieval Europe', in Blackwell 2019, 17–34
- Campbell, E and Batey, C 2017. *Early Medieval Argyll and Norse/Viking Argyll (AD 400–1100)*, Regional Archaeological Research

- Framework for Argyll, Kilmartin Museum and Society of Antiquaries of Scotland, Edinburgh
- Campbell, E and MacIver, C 2017. 'Excavations at Iona Abbey 2017: data structure report', Iona Research Group, Glasgow
- Campbell, E and Maldonado, A 2016. 'Russell Trust Excavations on Iona led by Charles Thomas, 1956–1963: data structure report', Historic Environment Scotland, Edinburgh
- Campbell, E and Maldonado, A 2019. 'Charles Thomas in north Britain: a career in the making', in A M Jones and H Quinell (eds), *An Intellectual Adventurer in Archaeology: reflections on the work of Charles Thomas*, 147–53, Archaeopress, Oxford
- Campbell, E, Batey, C, Murray, G and Thickpeny, C 2019. 'Furnishing an early medieval monastery: new evidence from Iona', *Med Archaeol*, **63** (2), 298–337
- Carney, J 1983. 'A maccucáin, srúith in tíag', *Celtica*, **15**, 25–41
- Carver, M 2009. 'Early Scottish monasteries and prehistory: a preliminary dialogue', *Scott Historical Rev*, **88**, 332–51
- Carver, M, Garner-Lahire, J and Spall, C 2016. *Portmahomack on Tarbat Ness: changing ideologies in north-east Scotland, sixth to sixteenth centuries*, Society of Antiquaries of Scotland, Edinburgh
- Charles-Edwards, T M 2006. *The Chronicle of Ireland: translated with an introduction and notes*, Liverpool University Press, Liverpool
- Clancy, T O 1996. 'Iona, Scotland, and the Céili Dé', in B E Crawford (ed) 1996, *Scotland in Dark Age Britain*, 111–30, St John's House Papers, St John's House, St Andrews
- Clancy, T O 2004. 'Diarmid sapientissimus: the career of Diarmid dalta Daigre, abbot of Iona 814–839', *Peritia*, **17–18**, 215–32
- Clancy, T O 2011. 'Iona v. Kells, succession, jurisdiction and politics in the Columban familia in the later tenth century', in F Edmonds and P Russell (eds), *Tome: studies in medieval Celtic history and law in honour of Thomas Charles-Edwards*, 89–101, Boydell and Brewer, Woodbridge
- Clancy, T O 2013. 'The Christmas Eve massacre, Iona, AD 986', *Innes Rev*, **64**, 66–71
- Clarke, H and Simms, A H (eds) 1985. *The Comparative History of Urban Origins in Non-Roman Europe*, BAR, Oxford
- Coleman, S and Eisner, J 1994. 'The pilgrim's progress: art, architecture and ritual movement at Sinai', *World Archaeol*, **26**, 73–89
- Cook, M 2008. 'An early Christian vallum in Dunning?', *Tayside Fife Archaeol J*, **14**, 9–15
- Corlett, C and Potterton, M (eds) 2010. *Death and Burial in Early Medieval Ireland in the Light of Recent Archaeological Excavations*, Wordwell, Dublin
- Corlett, C and Potterton, M (eds) 2014. *The Church in Early Medieval Ireland in the Light of Recent Archaeological Excavations*, Wordwell, Dublin
- Cramp, R 1970. 'Decorated window-glass and millefiori from Monkwearmouth', *Antiq J*, **50**, 327–35
- Cramp, R 1997. 'The early medieval window glass', in Hill 1997, 326–32
- Cramp, R 2000. 'Anglo-Saxon window glass', in Price 2000, 105–114
- Cramp, R 2005. *Monkwearmouth and Jarrow Monastic Sites. Vol 1*, English Heritage, London
- Crawford, O G S 1933. 'Iona', *Antiquity*, **7**, 453–67
- Crone, A and Hindmarch, E 2016. *Living and Dying at Auldham: the excavation of an Anglian monastic settlement and medieval parish church*, Society of Antiquaries of Scotland, Edinburgh
- Curle, A O 1924. 'A note on four silver spoons and a fillet of gold found in the nunnery at Iona; and on a finger-ring, part of a fillet and a fragment of wire, all of gold, found in St Ronan's Chapel, the Nunnery, Iona', *Proc Soc Antiq Scotl*, **58**, 102–11
- Dalglish, C and Driscoll, S 2009. *Historic Govan: archaeology and development*, CBA and HS, York
- Davies, W 1992. 'The myth of the Celtic Church', in N Edwards and A Lane (eds), *The Early Church in Wales and the West*, 12–21, Oxford University Press, Oxford
- Doherty, C 1985. 'The monastic town in early medieval Ireland', in Clarke and Simms 1985, 45–75
- Doherty, C, Doran, L and Kelly, M (eds) 2011. *Glendalough: city of God*, Four Courts Press, Dublin
- Driscoll, S 2002. *Excavations at Glasgow Cathedral, 1988–1997*, Society for Medieval Archaeology, Leeds
- Driscoll, S 2017. 'Obituary: Anthony Charles Thomas', *Proc Soc Antiq Scotl*, **145**, 13–16
- Dumville, D N 1997. *The Churches of North Britain in the First Viking Age*, *Whithorn Lect Ser*, Friends of the Whithorn Trust, Whithorn

- Einarsson, B (ed) 1977. *Hallfreðar Saga*, Stofnun Árna Magnússonar á Íslandi, Reykjavík
- Evans, N 2010. *The Present and the Past in Medieval Irish Chronicles*, Boydell Press, Woodbridge
- Etchingam, C 1999. *Church Organisation in Ireland AD 650 to 1000*, Laigin Publications, Maynooth
- Etchingam, C 2000. *The Irish 'Monastic Town': is this a valid concept?*, Department of Anglo-Saxon, Norse and Celtic, University of Cambridge, Cambridge
- Etchingam, C 2011. 'The organisation and function of an early Irish church settlement: what was Glendalough?', in Doherty *et al* 2011, 22–53
- Evison, V 2000. 'The glass fragments from Glastonbury', in Price 2000, 189–200
- Ferguson, R 2001. *George MacLeod: founder of the Iona Community, new edn*, Wild Goose Publications, Glasgow
- Fisher, I 2001. *Early Medieval Sculpture in the West Highlands and Islands*, RCAHMS, Edinburgh
- Flechner, R 2014. 'The Hibernensis: a study, edition, and translation, with notes', unpublished PhD thesis, University of Oxford
- Foot, S 1990. 'What was an Anglo-Saxon monastery?', in J Loades (ed), *Monastic Studies: the continuity of tradition*, 48–57, Headstart History, Bangor, Gwynedd
- Forsyth, K and Maldonado, A 2012. 'The early medieval sculpture of Iona', unpublished report for Historic Scotland
- Foster, S 2004. *Picts, Gaels and Scots: early historic Scotland*, 2nd edn, Batsford/Historic Scotland, London
- Foster, S 2015. 'Physical evidence for the early church in Scotland', in P S Barnwell (ed), *Places of Worship in Britain and Ireland, 300–950*, 68–91, Paul Watkins Publishing, Donington
- Fowler, E and Fowler, P J 1988. 'Excavations on Torr an Aba, Iona, Argyll', *Proc Soc Antiq Scot*, **118**, 181–201
- Fraser, J E 2009. *From Caledonia to Pictland: Scotland to 795*, Edinburgh, Edinburgh University Press
- Fraser, J 2016. *Iona and the Burial Places of the Kings of Alba*, Department of Anglo-Saxon, Norse and Celtic, University of Cambridge, Cambridge
- Gaskell-Brown, C and Harper, A 1984. 'Excavations on Cathedral Hill, Armagh 1968', *Ulster J Archaeol*, **47**, 109–61
- Geary, P 1994. *Living with the Dead in the Middle Ages*, Cornell University Press, Ithaca, NY
- Gilchrist, R and Green, C 2015. *Glastonbury Abbey: archaeological investigations 1904–79*, Society of Antiquaries of London, London
- Gittos, H 2002. 'Creating the sacred: Anglo-Saxon rites for consecrating cemeteries', in S Lucy and A Reynolds (eds), *Burial in Early Medieval England and Wales, 195–208*, Soc Medieval Archaeol Monogr 17, Society for Medieval Archaeology, Leeds
- Grabowski, K and Dumville, D 1984. *Chronicles and Annals of Medieval Ireland and Wales: the Clonmacnoise-group texts*, Boydell Press, Woodbridge
- Graham-Campbell, J 1981. 'The finds', in Reece 1981, 23–5
- Graham-Campbell, J 1995. *The Viking Age Gold and Silver of Scotland (AD 850–110)*, National Museums of Edinburgh, Edinburgh
- Graham-Campbell, J and Batey, C E 1998. *Vikings in Scotland: an archaeological survey*, Edinburgh University Press, Edinburgh
- Haggerty, A 1988. 'Iona: some results from recent work', *Proc Soc Antiq Scot*, **118**, 203–13
- Hamlin, A 1987. 'Iona: a view from Ireland', *Proc Soc Antiq Scot*, **117**, 17–22
- Harney, L 2011. 'Medieval burial and pilgrimage within the landscape of Glendalough: the evidence of the crosses and cross-slabs', in Doherty *et al* 2011, 112–36
- Hawkes, J 2005. 'Figuring salvation: an excursus into the iconography of the Iona crosses', in S Foster and M Cross (eds), *Able Minds and Practiced Hands: Scotland's early medieval sculpture in the 21st century*, 259–276, Soc Medieval Archaeol Monogr 23, Society for Medieval Archaeology, Edinburgh
- Henderson, G 1987. *From Durrow to Kells: the Insular Gospel books AD 650–800*, Thames & Hudson Ltd, London
- Henry, F 1957. 'Early monasteries, beehive huts and dry-stone houses in the neighbourhood of Cahirciveen and Waterville (Co Kerry)', *Proc Roy Ir Acad*, **58C**, 45–166
- Herbert, M 1996. *Iona, Kells and Derry: the history and hagiography of the monastic familia of Columba*, Four Courts Press, Dublin
- Herbert, M and Pádraig, Ó Riain (eds) 1988. *Betha Adamnáin: the Irish life of Adamán*, Irish Texts Society, London
- Herity, M 1984. 'The layout of Irish early Christian monasteries before the year 1000', *Monastic Stud*, **14**, 247–84

- Herity, M and Breen, A 2002. *The Cathach of Colum Cille: an introduction*, Royal Irish Academy, Dublin
- Hill, P 1997. *Whithorn and St Ninian: the excavation of a monastic town, 1984–91*, Sutton Publishing/Whithorn Trust, Stroud
- Hope-Taylor, B 1977. *Yeaving: an Anglo-British centre of early Northumbria*, English Heritage, London
- Hughes, K 1981. 'The Celtic Church: is this a valid concept?', *Camb Medieval Celtic Stud*, **1**, 1–20
- James, H F and Yeoman, P 2008. *Excavations at St Ethernan's Monastery, Isle of May, Fife, Perth, Tayside and Fife Archaeological Committee*, Scotland
- Jenkins, D 2010. 'Holy, Holier, Holiest': the sacred topography of the early medieval Irish Church, Brepols, Turnhout
- Keddie, W 1850. *Staffa and Iona Described and Illustrated*, Blackie & Son, Glasgow
- Kelly, D 1991. 'The heart of the matter: models for Irish high crosses', *Ƴ Roy Soc Antiq Ir*, **121**, 105–45
- King, H (ed) 1998. *Clonmacnoise Studies*. Vol **1**, Dúchas, Dublin
- King, H (ed) 2003 *Clonmacnoise Studies*. Vol **2**, Dúchas, Dublin
- Krautheimer, R 1942. 'The Carolingian revival of early Christian architecture', *Art Bull*, **24**, 1–38
- Lawlor, H C 1925. *The Monastery of St Mochaoi of Nendrum*, Belfast Natural History and Philosophical Society, Belfast
- Loveluck, C 2007. *Rural Settlement, Lifestyles and Social Change in the Later First Millennium AD: excavations at Flixborough*, Vol 4, Oxbow Books, Oxford
- Lowe, C 2006. *Excavations at Hoddom, Dumfriesshire: an early ecclesiastical site in South-West Scotland*, *Soc Antiq Scotl Monogr*, Society of Antiquaries Scotland, Edinburgh
- Lowe, C 2008. *Inchmarnock: an early historic island monastery and its archaeological landscape*, Society of Antiquaries of Scotland, Edinburgh
- MacDonald, A 1984. 'Aspects of the monastery and monastic life in Adomnán's *Life of Columba*', *Peritia*, **3**, 271–302
- MacDonald, A 1997. 'Adomnán's monastery of Iona', in Bourke 1997a, 24–44
- MacDonald, A 2001. 'Aspects of the monastic landscape in Adomnán's *Life of Columba*', in J Carey, M Herbert and P Ó Riain (eds), *Studies in Irish Hagiography: saints and scholars*, 15–30, Four Courts Press, Dublin
- Maddox, M C 2011. 'Finding the City of God in the lives of St Kevin: Glendalough and the history of the Irish celestial *civitas*', in Doherty *et al* 2011, 1–21
- Maldonado, A 2012. 'Burial in early medieval Scotland: new questions', *Medieval Archaeol*, **57**, 1–34
- Maldonado, A 2019. 'Early medieval burial in European context: log coffin burial in Scotland', in Blackwell 2019, 117–34
- Márkus, G 2009. 'Diormit: Columba's right-hand man', *Innes Rev*, **60**, 164–9
- Márkus, G 2017. *Conceiving a Nation: Scotland to 900 AD*, University of Edinburgh Press, Edinburgh
- McCormick, F 1992. 'Early Christian metal-working on Iona: excavations under the "infirmary" in 1990', *Proc Soc Antiq Scotl*, **122**, 207–14
- McCormick, F 1993. 'Excavations at Iona, 1988', *Ulster Ƴ Archaeol*, **56**, 78–108
- McErlean, T and Crothers, N 2007. *Harnessing the Tides: the early medieval tide mills at Nendrum Monastery, Strangford Loch*, Environment & Heritage Service/The Stationery Office, Norwich
- Meehan, B 2012. *The Book of Kells*, Thames & Hudson, London
- Meehan, D 1958. *Adamnan's De Locis Sanctis*, Institute for Advanced Studies, Dublin
- Moloney, A 1998. 'From east and west, crossing the bogs at Clonmacnoise', in King 1998, 7–10
- Morris, C 2005. *The Sepulchre of Christ and the Medieval West*, Oxford University Press, Oxford
- Munro, R W (ed) 1961. *Munro's Western Isles of Scotland and Genealogies of the Clans 1549*, Oliver and Boyd, Edinburgh
- Murphy, D 2003. 'The excavation of an early monastic enclosure at Clonmacnoise', in King 2003, 1–34
- Murray, G 2014. *The Cross of Cong: a masterpiece of medieval art*, Irish Academic Press, Dublin
- Mytum, H 1992. *The Origins of Early Christian Ireland*, Routledge, London
- Neuman de Vegvar, C 2007a. 'Converting the Insular landscape: crosses and their audiences', in A Minnis and J Roberts (eds), *Text, Image, Interpretation: studies in Anglo-Saxon literature in honour of Éamonn Ó Carragáin*, 407–29, Brepols, Turnhout
- Neuman de Vegvar, C 2007b. 'Remembering Jerusalem: architecture and meaning in

- Insular canon table arcades', in R Moss (ed), *Making and Meaning in Insular Art: 5th international conference of Insular art*, Trinity College Dublin, August 25–28th 2005, 242–56, Four Courts Press, Dublin
- Noble, G, Gondek, M, Campbell, E and Cook, M 2013. 'Between prehistory and history: the archaeological detection of social change among the Picts', *Antiquity*, **87**, 1, 136–50
- Nowakowski, J A, Quinnell, H, Sturgess, J, Thorpe, C and Thomas, C 2007. 'Return to Gwithian: shifting sands of time', *Cornish Archaeol*, **46**, 13–76
- O'Brien, C and Adams, M 2016. 'Early ecclesiastical precincts and landscapes of Inishowen, Co. Donegal', in T Ó Carragáin and S Turner (eds), *Making Early Christian Landscapes in Atlantic Europe: conversion and consolidation in the early middle ages*, 159–76, Cork University Press, Cork
- O'Brien, C, Adams, M, Haycock, D, O'Meara, D and Pennie, J 2014. 'The early ecclesiastical complexes of Carrowmore and Clonca and their landscape context in Inishowen, County Donegal', *Ulster J Archaeol*, **72**, 142–60
- Ó Carragáin, E 1995. *The City of Rome and the World of Bede*, Jarrow Lecture 1994, Newcastle upon Tyne
- Ó Carragáin, T 2009. 'Cemetery settlements and local churches in Pre-Viking Ireland in light of comparisons with England and Wales', in J Graham-Campbell and M Ryan (eds), *Anglo-Saxon/Irish Relations before the Vikings*, 329–66, Proc Brit Acad, Oxford University Press, Oxford
- Ó Carragáin, T 2010a. *Churches in Early Medieval Ireland: architecture, ritual and memory*, Yale University Press, London
- Ó Carragáin, T 2010b. 'From family cemeteries to community cemeteries in Viking Age Ireland', in Corlett and Potterton 2010, 217–26
- Ó Carragáin, T 2013. 'The view from the shore: perceiving island monasteries in early medieval Ireland', *Hortus Artium Medievalium*, **19**, 21–33
- OCGU 2010. 'Geophysical survey report: Iona Abbey fields, Iona', Orkney College Geophysics Unit, Orkney
- Ó Floinn, R 1997. 'Insignia Columbae I', in Bourke 1997a, 136–61
- Ó Floinn, R 1998. 'Clonmacnoise: art and patronage in the early medieval period', in King 1998, 87–100
- Ó Floinn, R 2012. 'Early Christianity in Ireland based on the most recent archaeological research', in O Heinrich-Tamáska, N Krohn and S Ristow (eds), *Christianisierung Europas: Entstehung, Entwicklung und Konsolidierung im archäologischen Befund*, 11–35, Schnell and Steiner, Regensburg
- O'Leary, C 2015. 'Memory, belief and identity: remembering the dead on Iniscealtra, Co. Clare', in H Williams, J Kirkton and M Gondek (eds), *Early Medieval Stone Monuments: materiality, biography, landscape*, 114–48, Boydell & Brewer, Woodbridge
- O'Loughlin, T 1992. 'Adam's burial at Hebron: some aspects of its significance in the Latin tradition', *Proc Ir Biblical Assoc*, **15**, 66–88
- O'Loughlin, T 1997. 'Living in the ocean', in Bourke 1997a, 11–23
- O'Loughlin, T 2004. 'Perceiving Palestine in early Christian Ireland: martyrdom, exegetical key, relic and liturgical space', *Ériu*, **54**, 125–37
- O'Loughlin, T. 2007. *Adomnán and the Holy Places*, T & T Clark, London
- O'Loughlin, T 2010. 'The *De Locis Sanctis* as a liturgical text', in Wooding 2010, 181–92
- O'Reilly, J 1997. 'Reading the scriptures in the Life of Columba', in Bourke 1997a, 80–106
- O'Sullivan, J 1994. 'Excavation of an early church and a women's cemetery at St Ronan's medieval parish church, Iona', *Proc Soc Antiq Scotl*, **124**, 327–65
- O'Sullivan, J 1999. 'Iona: archaeological investigations 1875–1996', in Broun, D and Clancy, T O (eds), *Spes Scottorum, Hope of Scots: Saint Columba, Iona and Scotland*, 215–43, T&T Clark, Edinburgh
- O'Sullivan, J and Ó Carragáin, T 2008. *Inishmurray: monks and pilgrims in an Atlantic landscape*, Cork University Press, Cork
- Ovenden, S 2016. 'Geophysical survey report: Iona Abbey', Rose Geophysical Consultants, Orkney
- Overbey, K 2012. *Sacral Geographies: saints, shrines and territory in medieval Ireland*, Brepols, Turnhout
- Picard, J-M 2011. 'Space organisation in early Irish monasteries', in Doherty *et al* 2011, 54–63
- Price, J (ed) 2000. *Glass in Britain and Ireland, AD 350–1100*, British Museum Press, London
- Proudfoot, E 1996. 'Excavations at the long cist cemetery on the Hallow Hill, St Andrews, Fife, 1975–7', *Proc Soc Antiq Scotl*, **126**, 387–454

- RCAHMS 1982. Argyll. An Inventory of the Monuments 4: Iona, HMSO, Edinburgh
- Redknap, M 1977. 'Excavation at Iona Abbey, 1976', *Proc Soc Antiq Scotl*, **108**, 228–53
- Reece, R 1981. *Excavations in Iona 1964 to 1974*, UCL Inst Archaeol Occas Publ, UCL, London
- Reimer, P J, Bard, E, Bayliss, A, Beck, J W, Blackwell, P G, Bronk Ramsey, C, Grootes, P M, Guilderson, T P, Hafliadason, H, Hajdas, I, Hatt, C, Heaton, T J, Hoffmann, D L, Hogg, A G, Hughen, K A, Kaiser, K F, Kromer, B, Manning, S W, Niu, M, Reimer, R W, Richards, D A, Scott, E M, Southon, J R, Staff, R A, Turney, C S M, and van der Plicht, J 2013. 'IntCal13 and Marine13 radiocarbon age calibration curves 0–50,000 years cal BP', *Radiocarbon*, **55** (4), 1,869–87
- Rodwell, W 1996. 'Above and below ground: archaeology at Wells Cathedral', in T Tatton-Brown and J Munby (eds), *The Archaeology of Cathedrals*, 115–34, University of Oxford Committee for Archaeol Monogr 42, Oxford
- Ryan, M 1989. 'Church metalwork in the eighth and ninth centuries', in S Youngs (ed), *The Work of Angels: masterpieces of Celtic metalwork, 6th–9th centuries*, 125–30, British Museum Press, London
- Scull, C 1997. 'Urban centres in pre-Viking England?', in J Hines (ed), *The Anglo-Saxons from the Migration Period to the Eighth Century: an ethnographic perspective*, 269–297, Boydell Press, Woodbridge
- Scully, D 2005. 'Bede, Orosius and Gildas on the early history of Britain', in S Lebecq, M Perrin and O Szerwiniak (eds), *Bède le Vénérable*, 31–42, Ceges – Université Charles-de-Gaulle, Lille
- Scully, D 2007. 'The third voyage of Cormac in Adomnán's Vita Columbae: analogues and contexts', in J Roberts and A Minnis (eds), *Text, Image, Interpretation: studies in Anglo-Saxon literature and its Insular context in honour of Éamonn Ó Carragáin*, 209–30, Brepols, Turnhout
- Sharpe, R 1984. 'Some problems concerning the organisation of the Church in early medieval Ireland', *Peritia*, **3**, 230–70
- Sharpe, R (ed and transl) 1995. *Adomnán of Iona: life of St Columba*, Penguin, London
- Sharpe, R 2012. 'Iona in 1771: Gaelic tradition and visitors' experience', *Innes Rev*, **63** (2), 161–259
- Skene, W F 1874. 'Notes on the history of the ruins at Iona', *Proc Soc Antiq Scotl*, **10**, 202–14
- Skene, W F 1876. 'Notes on the history and probable situation of the earlier establishments at Iona, prior to the foundation of the Benedictine monastery in the end of the twelfth century', *Proc Soc Antiq Scotl*, **11**, 330–49
- Stalley, R 1990. 'European art and the Irish high crosses', *Proc Roy Ir Acad*, **90C**, 135–58
- Stevens, P 2012. 'For whom the bell tolls: the monastic site at Clonfad 3, Co. Westmeath', in M Stanley, E Danaher and J Eogan (eds), *Creative Minds: production, manufacturing and invention in ancient Ireland*, 85–98, Wordwell, Dublin
- Stevens, P 2017. 'Early medieval jet-like jewellery in Ireland: production, distribution and consumption', *Medieval Archaeol*, **61**, 239–76
- Stevenson, R B K 1951. 'A hoard of Anglo-Saxon coins found at Iona Abbey', *Proc Soc Antiq Scotl*, **85**, 170–5
- Swan, L 1985. 'Monastic proto-towns in early medieval Ireland', in H Clarke and A H Simms (eds), *The Comparative History of Urban Origins in Non-Roman Europe*, 77–102, BAR, Oxford
- Swan, L 1994. 'Ecclesiastical settlement in Ireland in the early medieval period', in M Fixot and E Zadora-Rio (eds), *L'environnement des Églises et la Topographie Religieuse des Campagnes Médiévales. Actes du IIIe congrès international d'archéologie médiévale (Aix-en-Provence, 28–30 septembre 1989)*, 50–6, Société d'Archéologie Médiévale, Caen
- Swift, C 1998. 'Forts and fields: a study of "Monastic towns" in seventh and eighth century Ireland', *J Ir Archaeol*, **9**, 105–25
- Swift, C 2003. 'Sculptors and their customers: a study of the Clonmacnoise grave-slabs', in King 2003, 105–24
- Thomas, C 1956. 'Excavations at Gwithian, Cornwall, 1955: the early Christian settlement, the Bronze Age barrow group and a medieval manor', *Proc West Cornwall Field Club* 1956 Appendix
- Thomas, C 1957. 'Iona', *Discovery and Excavation Scotland*, 10
- Thomas, C 1959. 'The excavations on Iona, 1956 to 1958', *Rothmill Q*, **29**, 172–8
- Thomas, C 1971a. *The Early Christian Archaeology of North Britain*, Oxford University Press, Oxford
- Thomas, C 1971b. *Britain and Ireland in Early Christian times AD 400–800*, Thames & Hudson, London

- Thomas, C 1981. *Christianity in Roman Britain to AD 500*, Batsford, London
- Thomas, C 1984. 'Abercorn and the Provincia Pictorum', in R Miket and C Burgess (eds), *Between and Beyond the Walls: essays in prehistory and history of north Britain in honour of George Jobey*, 324–7, J Donald Publishers, Edinburgh
- Thomas, C 1985. *Studies in a Drowned Landscape: archaeology and history of the Isles of Scilly*, Batsford, London
- Thomas, C 1998. 'Courtenay Arthur Raleigh Radford 1900–1998', *Medieval Archaeol* **42**, 104–6
- Thomas, C 2012. *Gathering the Fragments: the selected essays of a groundbreaking historian*, Cornovia Press, Sheffield
- Thomas, C M 2013. 'Missing models: visual narrative in the Insular Paul and Anthony panels', in J Hawkes (ed), *Making Histories: proceedings of the sixth international Insular art conference York 2011*, 77–89, Shaun Tyas, Donington
- Valante, M 1998. 'Reassessing the Irish "monastic towns"', *Irish Hist Stud*, **31**, 1–18
- Webster, L and Backhouse, J 1991. *The Making of England: Anglo-Saxon art and culture AD 600–900*, British Museum Publications, London
- Welander, R, Batey, C and Cowie, T 1987. 'A Viking burial from Kneep, Uig, Isle of Lewis', *Proc Soc Antiq Scotl*, **117**, 149–74
- Whaley, D (ed) 2002. *Sagas of the Warrior-Poets*, Penguin Books, London
- Wilkinson, J 1971. *Egeria's Travels*, SPCK, London
- Will, R 2012. 'The Glebe, Iona: data structure report', GUARD Archaeology Ltd, Glasgow
- Will, R S 2014. 'The Glebe, Iona: overflow pipe route, archaeological evaluation', GUARD Archaeology Ltd, Glasgow
- Wooding, J (ed) 2010. *Adomnán of Iona: theologian, lawmaker, peacemaker*, Four Courts Press, Dublin
- Woods, D 2010. 'Crowd control in sixth-century Clonmacnoise (Adomnán, VC i.3)', *Ériu*, **60**, 131–6