

The Barker hypothesis confirmed: association of low birth weight with all-cause natural deaths in young adult life in a remote Australian Aboriginal community

Wendy E. Hoy^{1,2*} and Jennifer L. Nicol¹

¹Faculty of Medicine, Centre for chronic Disease, UQCCR, The University of Queensland, QLD, Australia

²Menzies School of Health Research, Darwin, Australia

Barker *et al.* proposed that low birth weight predisposes to higher death rates in adult life. We previously confirmed this fact in a cohort of young adults who were born in a remote Australian Aboriginal community between 1956 and 1985. We now present data in these same people with four more years of follow-up and a greater number of deaths. The fates of participants were documented from age 15 years until death, start of dialysis, or until the end of 2010 and causes of death were derived from clinic narratives and dialysis records. Rates of natural deaths were compared by birth cohorts and birth weight, and hazard ratios were calculated using Cox proportional hazards methods, by birth weight and adjusted for birth cohort and sex. Over follow-up of 19,661 person-years, 61 people died of natural causes between age 15 and the censor date. Low birth weights (<2.5 kg) were associated with higher rates of natural death, with HR (95% CI) 1.76 (1.1–2.9, $P=0.03$), after adjustment for year of birth and sex. The effect was particularly prominent for deaths at <41 years of age, and with deaths from respiratory conditions/sepsis and unusual causes. A predisposing effect of low birth weight on adult deaths was confirmed. This phenomenon, occurring in the context of dramatically improved survivals of lower birth weight infants and children since the early 1960s, helps explain the current epidemic of chronic disease in Aboriginal people. Birth weights continue to improve, so excess deaths from this source should progressively be minimized.

Received 18 July 2017; Revised 30 September 2017; Accepted 1 October 2017; First published online 25 January 2018

Key words: adult deaths, Australian aborigines, low birth weight and adult mortality, trends in mortality

Introduction

The seminal work of Barker *et al.* suggested that suboptimal intrauterine growth and its frequent manifestation, low birth weight (LBW; ≤ 2500 g), increase susceptibility to diseases that occur later in life.^{1,2} Many cohort studies have subsequently shown that lower birth weight is associated with adult morbidity and mortality,³ and specifically with increased risk of cardiovascular disease,^{2,4} hypertension,^{5,6} type 2 diabetes mellitus,⁷ stroke,^{6–8} chronic lung disease⁹ and chronic renal disease.^{10–12}

For some years we have followed a cohort of Australian Aboriginal people from one remote community, in whom birth weights had been recorded. This tribal group lives on two islands off the coast of the Northern Territory, about 90 km from Darwin. A Catholic mission was established there in 1911 by Father Francis Xavier Gsell, on behalf of the Missionaries of the Sacred Heart. In 1956, the Aboriginal population was estimated by Dr John Hargrave, the Northern Territory's first Aboriginal Health Officer, to be about 800, while, in the 2011 census, the Aboriginal population was estimated at 2263 people.¹³ This community has very high rates of renal failure, and mortality rates have been among the highest in Australia.^{14,15}

Subjects in this study cohort were born to Aboriginal mothers between 1956 and 1985 and their birth weights had been recorded at delivery ($n=995$). In accordance with World Health Organisation criteria, we defined infant deaths as those occurring in the first year of life, childhood deaths as those occurring between 1 and <15 years of age, and adult deaths as those occurring at ≥ 15 years of age.

We have previously described the very high frequency of LBW in those born between 1956 and 1964, and a modest improvement in birth weights through to 1985.¹⁶ We have also documented marked reductions over time in death rates, starting in the mid-1960s, of infants (35 natural deaths), and of children (55 natural deaths) and, against that background, we showed that lower birth weights predisposed to higher rates of both infant and childhood natural deaths (Fig. 1a and b).

Furthermore, among those who survived infancy and childhood, we described higher rates of death as young adults (deaths at 15 to <37 years of age) in those of lower birth weights, with a hazard ratio of 2.69 (95% confidence interval 1.3–5.5, $P=0.007$).¹⁶ That study, however, was limited by the young age of adults with recorded birth weight and by the small number of adult deaths to that point ($n=31$). Here we describe results 4 years later, with more person-years of follow-up, with a higher maximum age of participants, and almost double the numbers of adult deaths ($n=61$).

*Address for correspondence: Professor W. Hoy, Health Sciences Building, Level 8, Royal Brisbane and Women's Hospital, Herston, Queensland 4029, Australia.
(Email: w.hoy@uq.edu.au)

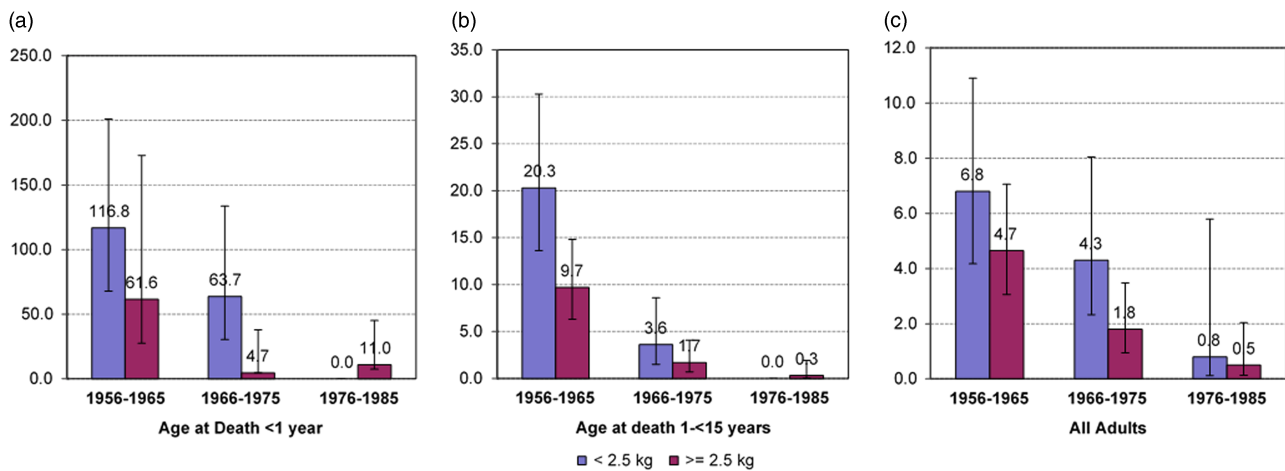


Fig. 1. Rates of natural death in infants (<1 year) ($n=35$) (a), Children (1 – <15 years) ($n=55$) (b) and adults (≥ 15 years) ($n=61$) (c) by birth cohort and birth weight below and above 2.5 kg. Rates are expressed as deaths per 1000 person-years.

Methods

Survival times for adults were calculated from his/her 15th birthday until death, start of dialysis or until the censor date of 31 December 2010. The primary outcome was death from natural causes. Subjects were divided into three cohorts according to year of birth: 1956–1965, 1966–1975 and 1976–1985. Rates of adult natural death were compared within each cohort by birth weight and birth weight category. Survivals by birth weight as a continuous variable, and by birth weight category (LBW *v.* normal birth weights, or birth weights around the cohort-specific group medians) were evaluated by the Cox proportional hazards method, with adjustment for year of birth, to account for improving survivals over time.

The ascertainment of terminal events and their causes, which had been recorded in narrative in the clinic death logs, has been described previously.¹⁶ That information was sometimes checked through individual medical records, and deaths were cross-checked against the parish church logs maintained by the local priests.¹⁷ The vital status of individuals who were not personally known to the investigators was confirmed by two Aboriginal community members, both of whom were born in the 1940s. They had a memory of the entire observation period, and knew everyone from the birth cohort who was still alive, and his/her whereabouts. ‘Renal deaths’ were also ascertained from regional dialysis unit records, maintained since the first community member started that treatment in 1982. The start of dialysis was considered a ‘renal death’, because without renal replacement therapy, those people would have died shortly thereafter.

Statistical analyses were performed with the Stata version 12.1 (StataCorp, College Station, TX, USA). Probability values of <0.05 were considered statistically significant.

This work was conducted through specific projects, ‘Epidemiology and Prevention of renal disease in Australian Aborigines, Parts 1 and 2’, with ethics approval from the Human Research

Ethics Committee of the Royal Darwin Hospital and Territory Health Services, NT (HREC: Number: 91/20; HREC: Number: 94/02) and through the project ‘An updated view of chronic disease profiles and chronic disease deaths in the Tiwi community: a ten year follow-up’, approved by the Human Research Ethics Committee of the Menzies School of Health Research, NT (HREC: Number: 03/51) and The University of Queensland, QLD (HREC: Number: 2004000028). The Tiwi Land Council also approved this research.

Results

Birth weights were recorded for 995 people of Aboriginal assignment from this tribal group, who were born between 1956 and 1985. There were 102 deaths during infancy and childhood. The predisposing effects of LBW to those deaths have been described previously.¹⁶

Eight hundred and ninety three (893) persons survived beyond their 15th birthday. Table 1 describes the characteristics of those people, who are the subjects of this adult mortality analysis. Average birth weights were low and rates of LBW were high. However, birth weights increased over time: about one-third of all subjects in the first birth cohort (1956–1965) and one-quarter in the last birth cohort (1976–1985) had been LBW babies.

Among the entire study cohort, there were 61 natural deaths and 43 deaths of misadventure after their 15th birthday. Deaths of misadventure included injuries from accidents, burns, drowning, jelly fish stings, crocodile attack, homicides, suicides and intoxication. The derived ‘causal’ categories of natural deaths of adults are summarized in Box 1. Several people had more than one causal assignment of death, most often pneumonia/sepsis/respiratory failure with coexisting heart failure.

Table 2 shows the numbers and rates of natural deaths by birth cohort and by LBW. There was a marked temporal trend

Table 1. Study group by birth cohort

Birth cohort	Number of births	Mean (s.d.) (kg)	Range (kg)	Median (kg)	<2.5 kg (%)
1956–1965	237	2.69 (0.46)	1.50–4.31	2.71	35.0
1966–1975	306	2.71 (0.54)	1.00–4.35	2.70	32.0
1976–1985	350	2.86 (0.53)	1.07–4.60	2.87	23.1
Total	893	2.77 (0.52)	1.00–4.60	2.78	29.3

Only births for individuals in the study population who reached adulthood (≥ 15 years) are included.

Box 1. Categories of natural death in adults (≥ 15 years) by primary causal assignment from 1971–2010 ($n = 61$)

Assorted: congenital abnormalities, cerebral palsy, lupus, rheumatic heart disease, liver failure, primary pulmonary hypertension, cancer ($n = 13$)

Pulmonary/pneumonia/sepsis: pneumonia, bronchitis, bronchiectasis, respiratory failure, chronic lung disease, acute respiratory disease, septic shock ($n = 12$)

Cardiovascular: heart attack, coronary artery disease, acute myocardial infarction, cardiac arrest, congestive heart failure ($n = 15$)

Renal: maintenance dialysis, or renal failure death without dialysis ($n = 21$)

• There were a total of 73 causal and contributing assignments

Table 2. Rates of natural death in adults by birth cohort and low birth weight (LBW)

Birth cohort		Deaths/ person-years	Rate per 1000 person-years
1956–1965	All	39/7233	5.39 (3.94–7.38)*
	Bwt <2.5 kg	17/2502	6.79 (4.22–10.93)
	Bwt ≥ 2.5 kg	22/4731	4.65 (3.06–7.06)
	LBW v. higher		$P = 0.25$
1966–1975	All	19/7290	2.61 (1.66–4.09)*
	Bwt <2.5 kg	10/2313	4.32 (2.33–8.04)
	Bwt ≥ 2.5 kg	9/4978	1.81 (0.94–3.48)
	LBW v. higher		$P = 0.04$
1976–1985	All	3/5138	0.58 (0.19–1.81)*
	Bwt <2.5 kg	1/1224	0.82 (0.12–5.80)
	Bwt ≥ 2.5 kg	2/3915	0.51 (0.13–2.04)
	LBW v. higher		$P = 0.68$

Bwt, birth weight.

* $P = 0.01$ for trends in aggregate rates by birth cohort.

of falling mortality overall ($P = 0.01$). Death rates of those born in the second and third cohorts were 49% and 14% of death rates of those born in the first cohort. In the 1956–1965 and 1966–1975 birth cohorts, death rates were higher among those of lower birth weights. There were only three adult deaths among those born from 1976 to 1985, so no assessment of birth weight associations could be made.

Figure 1c demonstrates these phenomena for the aggregate group, and the data are shown separately by sex in Supplementary Material Figure S1. The similarities with trends described for infants and children (Fig. 1a and 1b) are striking.

Table 3 shows the hazard ratio for death associated with LBW of 1.76 (CI 1.06–2.91). It also shows that death rates were significantly associated with birth weight around the group-specific medians, and with birth weight on a continuum. Over this range of birth weights, each kg increase in birth weights was associated with a 48% reduction in young adult deaths, with similar trends in both males and females.

Confirming these observations, and shown in Fig. 2, people who died had lower birth weights than those who did not die before the censor date, with the phenomenon suggested in males and females.

Figure 3 supports higher rates of LBW among the 61 who died natural deaths, when assessed against a 29.3% prevalence of LBW in the whole ‘birth weight cohort’, with the exception of those who died over the age of 45 years. It also suggests that LBW was most prevalent among those who died at the youngest ages.

Table 4 summarizes the ages at death and the birth weight data by causal categories of natural death. Deaths from respiratory causes or sepsis and deaths in the assorted category generally occurred at younger ages, and in people who had lower birth weights, while renal failure and cardiovascular deaths generally occurred at higher ages and their rates of LBW were less extreme.

Figure 4 shows these changes on a continuum of age at death. With older age at death, the assorted causes of death disappeared, the proportions of respiratory death were lower and renal and cardiovascular deaths became increasingly dominant.

Figure 5 shows the survival of people as young adults up to the potential age of 41 years, by category of birth weight. This analysis includes only people born before 1970 ($n = 344$) because younger people had not been born 41 years before the censor date. The lower survival of LBW subjects from all-cause natural deaths is clear. The hazard ratios, adjusted for sex and year of birth, are shown in Table 5. The relationships were also significant for all-cause natural and pulmonary death around the median birth weight values.

Among the 43 adults with deaths of misadventure, 38 were males and five were females; 13 were born in the first birth cohort, 13 in the second and 17 were born in the third cohort; 27 were suicides (25 males and two females) and 16 were other deaths of misadventure; 25 of those deaths were in people of birth weights above their group median and there was no association between death by suicide and LBW.

Discussion

The current study confirms that LBW predisposes to natural deaths of young adults. The effect also operates around

Table 3. Hazard ratios (95% CI) for all-cause natural death in adults by birth weight, adjusted for year of birth and gender (n = 893)

	All (61 deaths)	Female (30 deaths)	Males (31 deaths)
Bwt <2.5 kg	1.76 (1.06–2.91) <i>P</i> = 0.03	1.75 (0.85–3.59) <i>P</i> = 0.13	1.79 (0.88–3.66) <i>P</i> = 0.11
Bwt below group median	1.92 (1.15–3.23) <i>P</i> = 0.01	1.87 (0.89–3.94) <i>P</i> = 0.10	1.98 (0.96–4.09) <i>P</i> = 0.06
Bwt per kg increase	0.52 (0.32–0.87) <i>P</i> = 0.01	0.51 (0.25–1.03) <i>P</i> = 0.06	0.54 (0.26–1.12) <i>P</i> = 0.10

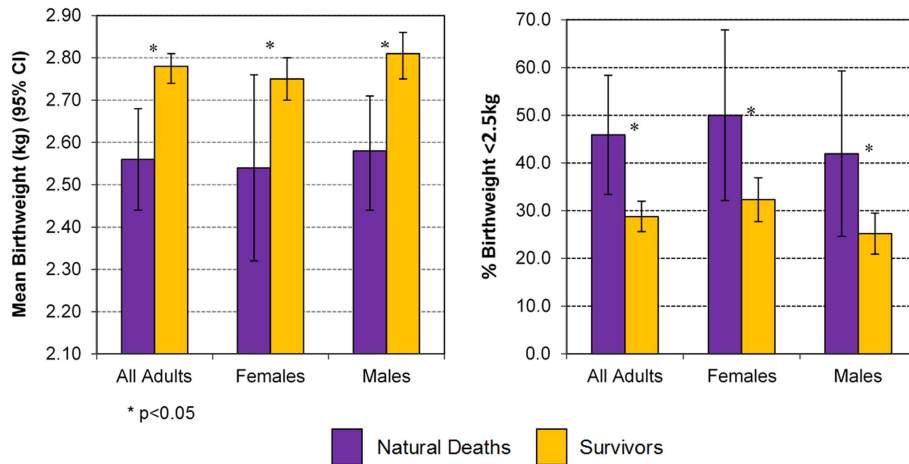


Fig. 2. Birth weight and percentage with birth weight <2.5 kg in those with natural death *v.* Survivors, in adults ≥15 years.

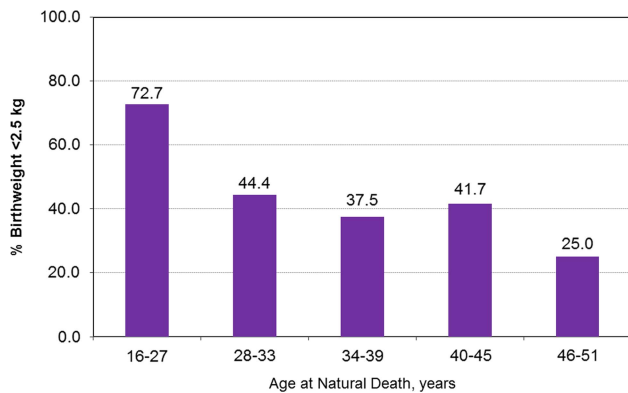


Fig. 3. Percentage of persons with birth weight <2.5 kg by age at natural death, in adults ≥15 years.

group-specific median birth weight values, around the <2.5 kg definition of LBW, and across birth weight over a continuum.

The birth weight effects were apparent around the high mortality rates of the first two birth cohorts, but could not be discerned in the youngest group, among whom there were, to that point, very few adult deaths

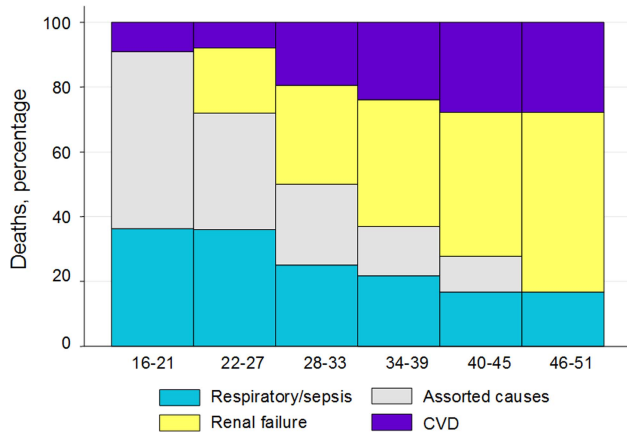
High rates of LBW and a rapid fall in early life mortality have combined to expose the association of lower birth weights with

natural deaths in these young Aboriginal adults. This confluence of events is probably driving much of the burden of premature natural deaths experienced by remote living Aboriginal Australians more broadly. Certainly the fall in infant mortality is generalizable to all Northern Territory Aboriginal babies, as shown in Fig. 6.¹⁸ Thus the epidemic of chronic disease in Aborigines appears to be a legacy, in part, of an earlier therapeutic triumph which reduced mortality in infancy and childhood in a population with very low birth weights.

This study has many strengths. There was a definitive denominator for those at risk, i.e. those with reported birth weight. There was assurance of Indigenous and tribal assignment, complete ascertainment of outcomes and the recording of birth weights was precise. The derivation of causal categories of natural death from local clinic narratives was necessary in the early part of the observation period, which antedated the official government-based recording of deaths, so this approach was continued through the latter part of the study for consistency. It was a major advantage to have the detailed documentation by the clinical staff who knew the patients well; it revealed the subtleties of coexisting diagnoses, and is undoubtedly more accurate than any assignment made by proxy coders. Furthermore, our use of a combined endpoint for renal deaths, which included all people who started dialysis as

Table 4. Age at death and birth weight of adults ≥ 15 years by categories of death

	<i>n</i>	Age at death [Mean (s.d.)]	Birth weight [Mean (s.d.) (kg)]	Birth weight [<2.5 kg (%)]	Birth weight [<median (%)]
Respiratory/sepsis	12	30.4 (7.0)	2.543 (0.67)	75.0	75.0
Assorted causes	13	30.9 (8.8)	2.409 (0.58)	46.2	53.8
Cardiovascular	15	34.2 (8.2)	2.578 (0.32)	33.3	73.3
Renal failure	21	38.4 (6.7)	2.645 (0.38)	38.1	52.4
All-cause natural	61	34.2 (8.2)	2.558 (0.48)	45.9	62.3

**Fig. 4.** Percentage of causal category of adult natural deaths by age at death, with smoothing of percentages of deaths over three consecutive categories of death.

well as those who died with terminal renal failure, is the only indicator which reflects the true frequency of end stage kidney disease,¹⁹ We have emphasized the importance of that approach in a recent review,²⁰ mentioned it in the most recent Burden of Disease Study,²¹ and used it in a manuscript on changes in mortality among Tiwi Islanders.¹⁷

One limitation of the study is lack of precise data on prematurity. Gestational age estimates were not recorded in the earlier subjects in the birth weight cohort, and thereafter were recorded only sporadically. However, prematurity, as well as intrauterine growth retardation, remains common, with current estimated proportion of about 18% of live births in remote communities.²²

Our findings are compatible with both a study of a Danish cohort of men, in whom all-cause mortality at ages 15–49 years was associated with LBW or short length at birth,²³ and with a Finnish study, in which lower birth weights predicted premature deaths before the age of 55 years.²⁴ A recent systematic review of 22 studies, that included a total of 36,834 deaths, concluded that there was a 6% lower risk of all-cause mortality (adjusted HR 0.94, 95% CI: 0.92, 0.97) per kg higher birth weight for men and women combined.²⁵ Interestingly, Baker *et al.*³ showed a U-shaped association of birth weight and mortality, with lower and higher birth weights contributing to

higher mortality. We did not observe a U-shaped effect, but our highest recorded birth weight was only 4.25 kg and our number of deaths was relatively small.

LBW had an exacerbating effect on all major ‘causal’ categories of natural adult death, and the association with pulmonary deaths was especially striking. The observation is consistent with adverse effects of intrauterine growth retardation and prematurity on fetal lung development and supports population studies that show impaired lung function and accelerated lung ageing in people of LBW.^{1,9} As early as 1991, Barker, Osmond *et al* described, in adult males in the United Kingdom, the predisposing effect of LBW on chronic bronchitis and respiratory functions as well as on deaths from chronic lung disease, and they specifically noted that forced expiratory volume was directly related to birth weight.⁹ They commented that growth of the airways, as opposed to growth and expansion of the alveoli, is largely completed *in utero*, and is irrevocably constrained with LBW. Johnson and Schoeni described, in the US population, a 60% increase in asthma at age 50 in people of LBW.⁶ In our data, an accentuated risk for pulmonary deaths is evident in the earliest decades of adult life. Moreover, it represents a continuation of the LBW-associated exacerbation of risk for pulmonary deaths we previously described in infants and children.¹⁶ The apparent exacerbations of risk for cardiovascular and renal deaths become more prominent in the second and third decades of adult life. The association of LBW with renal deaths is of special interest, given that this community has had the highest rates of renal failure in Australia.¹⁴ One potential mechanistic link of LBW to kidney disease is through reduced nephron endowment that is associated with intrauterine growth retardation²⁶; development of the full complement of nephrons is completed by the 36th week of gestation and is impaired by an adverse intrauterine environment and an abbreviated pregnancy. There are clear analogies between kidney development and development of the airways.

The predisposing effect of lower birth weights to non-communicable disease deaths is compatible with our findings in this community of an inverse association of birth weight with chronic disease markers, specifically albuminuria and blood pressure levels.^{10,27} Results of a recent systematic review²⁸ supported the fact that LBW is an important risk factor for cardiovascular disease among other adult aboriginal

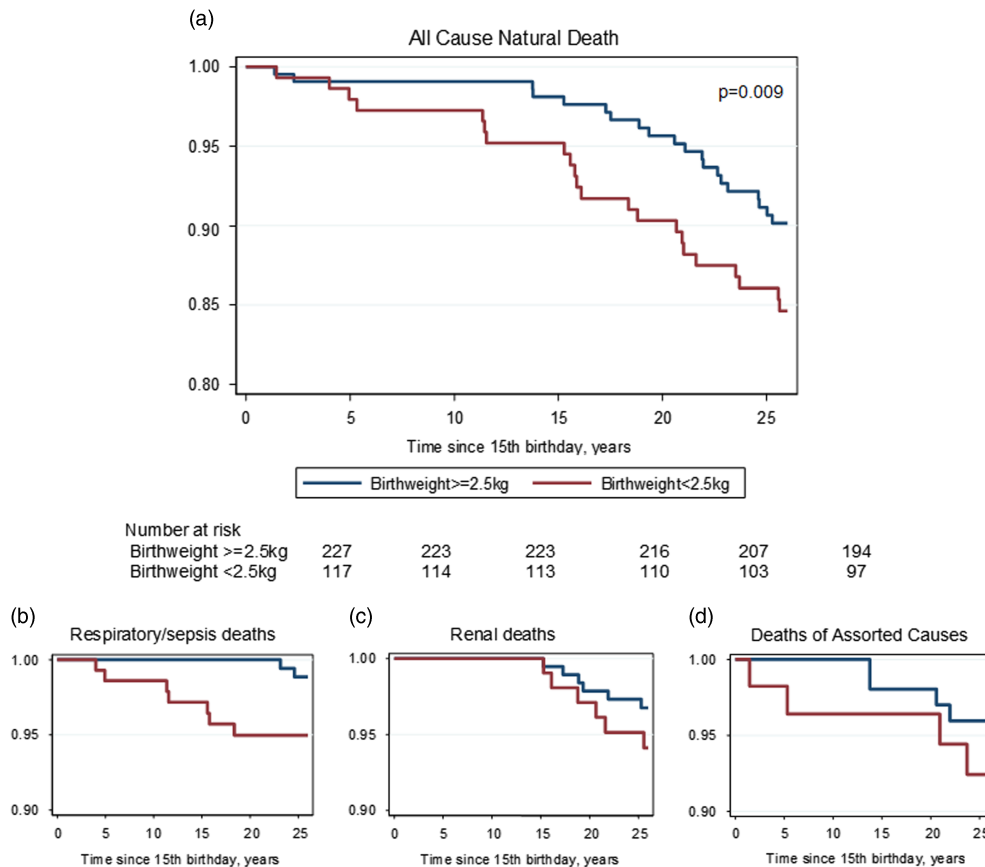


Fig. 5. Kaplan–Meier curves for all-cause natural (a) and primary causes of death (respiratory/sepsis (b), renal (c) and assorted causes (d)) in first 25 years of adult life, adjusted for year of birth and sex, and categorized by low birth weight (<2.5 kg) v. higher.

Table 5. Hazard ratios (CI) for natural death, birth weight <2.5 kg v. higher, in first 25 years of adult life, for people born before 1970 (n = 344), adjusted for sex and year of birth

	Hazard ratio (CI)	P
All-cause natural death (n = 42)	2.27 (1.24–4.17)	0.008
Respiratory/sepsis deaths (n = 9)	7.14 (1.48–34.37)	0.01
Assorted causes (n = 8)	1.97 (0.49 to 7.95)	0.34
Renal (n = 12)	1.92 (0.62–5.98)	0.26
Cardiovascular deaths (n = 13)	1.40 (0.46–4.29)	0.56

populations. Canadian Saskatchewan people with end stage renal disease also had a >3 times higher odds of LBW.¹² These findings are compatible with previous studies among non-aboriginal groups.^{4,11}

Thus birth weight is an important indicator of long-term adult health. Fortunately, in our target population, birth weights are continuing to increase; currently average birth weights of remote Aboriginal people in the Top End of the Northern Territory are about 3.1 kg, and rates of LBW about 16%.²⁹ An intersecting challenge now is the prevention of fetal macrosomia, with increasing rates of gestational diabetes.³⁰

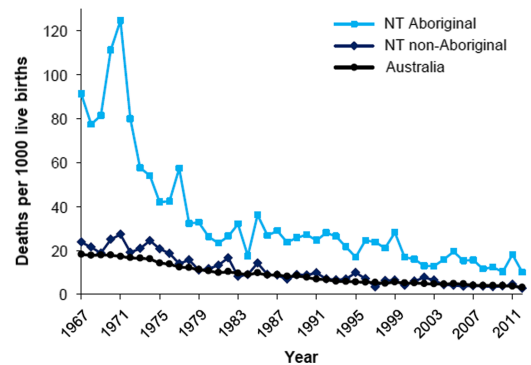


Fig. 6. Infant mortality, by Indigenous status, Northern Territory and Australia, 1967–2012.

In the context of healthy pregnancies, there is still much to improve. As of 2014, the average maternal age was 5 years less than in non-indigenous people, and 19% were teenagers³¹; 50% smoke during pregnancy, compared with 12% of non-indigenous mothers. Nationally, the Aboriginal rates of prematurity and LBW are 12.5 and 12.6%, respectively, compared with 7.5 and 6% in non-indigenous people. As noted, an added complication is the high rates of gestational diabetes, which are 1.5 times those of non-indigenous people.³⁰

Insufficient access to antenatal care, especially in remote areas, exacerbates many of these risks. By focussing on improving maternal health, public health policy can aim to break the inter-generational cycle of chronic disease.

Acknowledgements

The authors thank this community, its clinics and its Land Council for their approval of, and participation in, this research. They thank the clinics especially for access to delivery log books, death logs and medical records. This study would not have been possible without the meticulous work and records of the mission clinic, run by the Sisters of Our Lady of the Sacred Heart, and the assistance and the parish records supplied by the parish priests, members of the Order of the Missionaries of the Sacred Heart. The authors are grateful to Dr Alan Walker for access to the Royal Darwin Hospital delivery room logs, and Emma Kile, Gurmeet Singh and Andrew White for assisting in the collection of birth weights. They thank the Renal Team at Menzies School of Health Research for all their good work over the years. They also thank Professor John Mathews, who, as Founding Director of the Menzies School of Health Research, stimulated interest in the influence of birth weight on health.

Financial Support

The Tiwi Land Council provided seed funding of US \$50,000 in 1992 to start this ongoing engagement, through the Stanley Tipiloura Fund. Professor Wendy Hoy received additional funds that have contributed to the current study through the National Health and Medical Research Council (NHMRC) Project Grants 'Epidemiology and Prevention of Aboriginal Renal Disease, Part 1' grant number 921134, and 'Epidemiology and Prevention of Aboriginal Renal Disease, Part 2' grant number 951342; as well as the NHMRC Program Grant 'Health outcomes monitoring and evaluation: learning about activity, nutrition, diet and social factors (HOMELANDS)' grant number 320860; and The NHMRC Australia Fellowship 'Chronic Disease in High Risk Populations' grant number 511081. The Colonial Foundation of Australia contributed funding through four grants: Studies on the Susceptibility to Renal Disease (2001–2005); Aboriginal Chronic Disease Outreach Program in Australia, Western Australia (2001–2005); Studies on Kidney and Related Chronic Disease in Aboriginal People, Part 2 (2006–2008); and Primary and Secondary Prevention of Chronic Disease in Aboriginal People in Remote Areas (2009–2011). Dr Hoy is currently supported by the NHMRC Centre of Research Excellence in Chronic Kidney Disease, grant number 1079502.

Conflicts of Interest

None.

Ethical Standards

The authors assert that all procedures contributing to this work comply with the ethical standards of the relevant national guidelines on human experimentation (National Statement on

Ethical Conduct in Human Research (2007) – Updated May 2015) and with the Helsinki Declaration of 1975, as revised in 2008. Ethics approval for work that includes the birth weight and mortality reviews was granted for the specific, Epidemiology and Prevention of renal disease in Australian Aborigines, Part 1 (HREC: Number: 91/20) and Epidemiology and Prevention of renal disease in Australian Aborigines, Part 2 (HREC: Number: 94/02), by the Ethics committees of the Royal Darwin Hospital and Territory Health Services, NT. Ethics approval for this work was also granted as a third project, An updated view of chronic disease profiles and chronic disease deaths in the Tiwi community: a 10-year follow-up, by the Human Research Ethics Committee of the Menzies School of Health Research, NT (HREC: Number: 03/51) and The University of Queensland, Brisbane, QLD (HREC: Number: 2004000028). The Tiwi Land Council also approved this research.

Supplementary material

To view supplementary material for this article, please visit <https://doi.org/10.1017/S2040174417000903>

References

1. Barker DJP. The fetal and infant origins of adult disease. *Br Med J.* 1990; 301, 1111.
2. Barker DJP, Osmond C, Law CM. The intrauterine and early postnatal origins of cardiovascular disease and chronic bronchitis. *J Epidemiol Community Health.* 1989; 43, 237–240.
3. Baker JL, Olsen LW, Sorensen TIA. Weight at birth and all-cause mortality in adulthood. *Epidemiology.* 2008; 19, 197–203.
4. Huxley R, Owen CG, Whincup PH, *et al.* Is birth weight a risk factor for ischemic heart disease in later life? *Am J Clin Nutr.* 2007; 85, 1244–1250.
5. Leon DA, Koupil I, Mann V, *et al.* Fetal, developmental, and parental influences on childhood systolic blood pressure in 600 sib pairs: the Uppsala Family Study. *Circulation.* 2005; 112, 3478–3485.
6. Johnson RC, Schoeni RF. Early-life origins of adult disease: national longitudinal population-based study of the United States. *Am J Public Health.* 2011; 101, 2317–2324.
7. Whincup PH, Kaye SJ, Owen CG, *et al.* Birth weight and risk of type 2 diabetes: a systematic review. *JAMA.* 2008; 300, 2886–2897.
8. Rich-Edwards JW, Stampfer MJ, Manson JE, *et al.* Birth weight and risk of cardiovascular disease in a cohort of women followed up since 1976. *Br Med J.* 1997; 315, 396–400.
9. Barker DJP, Godfrey KM, Fall C, *et al.* Relation of birth weight and childhood respiratory infection to adult lung function and death from chronic obstructive airways disease. *Br Med J.* 1991; 303, 671–675.
10. Hoy WE, Kile E, Rees M, Mathews JD. Low birthweight and renal disease in Australian Aborigines. *Lancet.* 1998; 352, 1826–1827.
11. Lackland DT, Bendall HE, Osmond C, *et al.* Low birth weights contribute to high rates of early-onset chronic renal failure in the Southeastern United States. *Arch Intern Med.* 2000; 160, 1472–1476.
12. Dyck R, Klomp H, Tan L, *et al.* An association of maternal age and birth weight with end-stage renal disease in Saskatchewan. Sub-analysis of registered Indians and those with diabetes. *Am J Nephrol.* 2003; 23, 395–402.

13. Australian Bureau of Statistics. Tiwi Islands 2011 census of population and housing. Aboriginal and Torres Strait Islander Peoples (Indigenous profile). Cat no. 2002.0. ABS, Commonwealth of Australia, 2012.
14. Spencer JS, Silva D, Snelling P, *et al.* An epidemic of renal failure among Australian Aborigines. *Med J Aust.* 1998; 168, 537–541.
15. Hoy WE, Mathews JD, McCredie DA, *et al.* The multidimensional nature of renal disease: rates and associations of albuminuria in an Australian Aboriginal community. *Kidney Int.* 1998; 54, 1296–1304.
16. Hoy WE, Nicol JL. Birthweight and natural deaths in a remote Australian Aboriginal community. *Med J Aust.* 2010; 192, 14–19.
17. Hoy WE, Mott SA, McLeod BJ. Transformation of mortality in a remote Australian community: a retrospective observational study. *BMJ Open.* 2017; 7, e016094. <https://doi.org/10.1136/bmjopen-2017-016094>.
18. Northern Territory Department of Health. Mortality in the Northern Territory 1967–2012. Health Gains Planning Fact Sheet, 2016. Retrieved 26 Oct 2017 from <http://digitallibrary.health.nt.gov.au/prodjspsui/handle/10137/669>.
19. Sparke C, Moon L, Green F, *et al.* Estimating the total incidence of kidney failure in Australia including individuals who are not treated by dialysis or transplantation. *Am J Kid Dis.* 2013; 61, 413–419.
20. Hoy WE, Mott SA, McDonald S. An expanded nationwide view of chronic kidney disease in Aboriginal Australians. *Nephrology.* 2016; 21, 916–922.
21. Australian Institute of Health and Welfare 2015. Australian Burden of Disease Study: fatal burden of disease in Aboriginal and Torres Strait Islander people 2010. Australian Burden of Disease Study series no. 2. Cat. no. BOD 2. Canberra: Australian Institute of Health and Welfare.
22. McComb J, Woods M. Northern Territory Perinatal Collection. Statistical Report, in Northern Territory Midwives Collection 1993. Epidemiology Branch, Territory Health Services, 1996.
23. Andersen AM, Osler M. Birth dimensions, parental mortality, and mortality in early adult age: a cohort study of Danish men born in 1953. *Int J Epidemiol.* 2004; 33, 92–99.
24. Kajantie E, Osmond C, Barker DJP, *et al.* Size at birth as a predictor of mortality in adulthood: a follow-up of 350000 person-years. *Int J Epidemiol.* 2005; 34, 655–663.
25. Risnes KR, Vatten LJ, Baker JL, *et al.* Birthweight and mortality in adulthood: a systematic review and meta-analysis. *Int J Epidemiol.* 2011; 40, 647–661.
26. Hughson MD, Farris AB III, Denton-Douglas R, *et al.* Glomerular number and size in autopsy kidneys: the relationship to birth weight. *Kidney Int.* 2003; 63, 2113–2122.
27. Singh GR, Hoy WE. The association between birth weight and current blood pressure: a cross-sectional study in an Australian Aboriginal community. *Med J Aust.* 2003; 179, 532–537.
28. McNamara BJ, Gubhaju L, Chamberlain C, *et al.* Early life influences on cardio-metabolic disease risk in aboriginal populations – what is the evidence? A systematic review of longitudinal and case-control studies. *Int J Epidemiol.* 2012; 41, 1661–1682.
29. Hall J, Case A, O’Neil L. Northern Territory Midwives’ Collection. Mothers and Babies 2013. Department of Health, Darwin, 2015. Retrieved 7 June 2016 from <http://digitallibrary.health.nt.gov.au>.
30. Templeton M, Pieris-Caldwell I. *Gestational Diabetes Mellitus in Australia, 2005–06. Cat. No. CVD 44.* 2008. Australian Institute of Health and Welfare: Canberra.
31. Australian Institute of Health and Welfare. *Birthweight of Babies Born to Indigenous Mothers. Cat. No. IHW 138.* 2014. Australian Institute of Health and Welfare: Canberra.