



# LOOK AGAIN...

*Just for Fun!*

See if you can find the 8 differences in each set of images.

## Deep ocean

Self-assembly of cadmium telluride (CdTe) nanoparticles on copper wire by dielectrophoresis. Scanning electron microscope image of the curved surface of Cu wire. An ocean texture was added to the Cu wire surface, and used the hue, curve, level, and color balance effects in Photoshop.

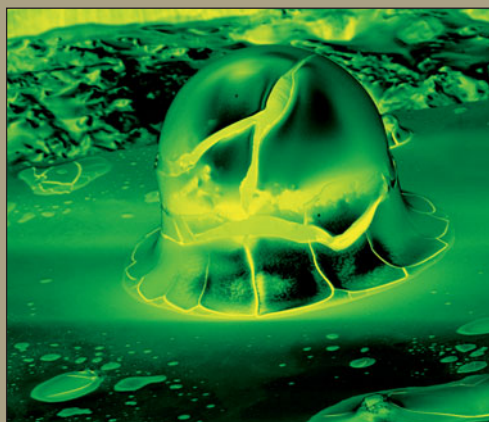
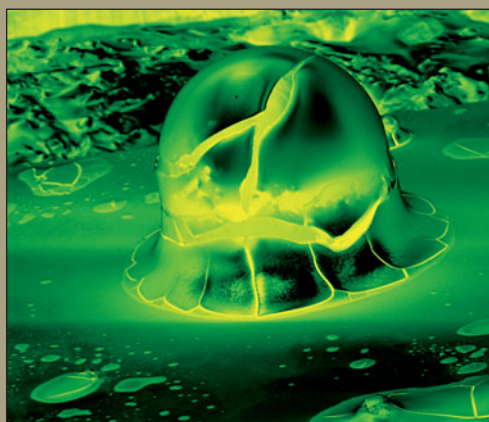
Ji-Young Kim, University of Michigan, USA



## Liquid-metal alien micro-egg

The image shows a ~200 μm diameter "egg" of GaInSn after exposure to HCl acid vapor. The room-temperature liquid metal is covered in a thick, mostly gallium chloride shell, instead of the typical nanometer thin oxide shell. The cracked shell gives an impression that the bare liquid metal is about to "hatch."

Konrad Rykaczewski, Arizona State University, USA, and Kyle Doudrick, University of Notre Dame, USA



April 2016 answer key



Answers will be published in the August 2016 issue.

Images on the top were submitted to the Materials Research Society "Science as Art" competition. Images on the bottom were modified in Adobe Photoshop for this "Look Again" activity.