

BJP The British Journal of Psychiatry Psych

Sponsorship bias in the comparative efficacy of psychotherapy and pharmacotherapy for adult depression: meta-analysis

Ioana Cristea *et al*

Telomere length and depression: prospective cohort study and Mendelian randomisation study in 67 306 individuals

Marie Wium-Andersen *et al*

Impact of long-term medical conditions on the outcomes of psychological therapy for depression and anxiety

Jaime Delgado *et al*

Methylene blue treatment for residual symptoms of bipolar disorder: randomised crossover study

Martin Alda *et al*



Contents

- A1 Editorial Board
A3 Highlights of this issue

Editorials

- 1 **Physical illness in those with mental illness: psychiatric services need to change focus**
O. E. Daly

- 3 **Reassessing biopsychosocial psychiatry**
W. Davies and R. Roache

- 5 **The Not-Parents – poems by doctors**
Siân Hughes

In debate

- 6 **Splitting in-patient and out-patient responsibility does not improve patient care**
T. Burns/M. Baggaley

Review articles

- 10 **Allopurinol as add-on treatment for mania symptoms in bipolar disorder: systematic review and meta-analysis of randomised controlled trials**
F. Bartoli, C. Crocamo, M. Clerici and G. Carrà

- 15 **Sylvia Plath's bell jar of depression: descent and recovery – psychiatry in literature**
Hannah Marcarian and Paul O. Wilkinson

- 16 **Sponsorship bias in the comparative efficacy of psychotherapy and pharmacotherapy for adult depression: meta-analysis**
I. A. Cristea, C. Gentili, P. Pietrini and P. Cuijpers

- 24 **The evidence–practice gap in specialist mental healthcare: systematic review and meta-analysis of guideline implementation studies**
F. Girlanda, I. Fiedler, T. Becker, C. Barbui and M. Koesters

- 30 **Camus and modern psychiatry: *The Myth of Sisyphus* – reflection**
Thom Proven

Papers

- 31 **Telomere length and depression: prospective cohort study and Mendelian randomisation study in 67 306 individuals**
M. K. Wiium-Andersen, D. D. Ørsted, L. Rode, S. E. Bojesen and B. G. Nordestgaard

- 39 **Association of timing of menarche with depressive symptoms and depression in adolescence: Mendelian randomisation study**
M.-E. Sequeira, S. J. Lewis, C. Bonilla, G. Davey Smith and C. Joinson

- 47 **Impact of long-term medical conditions on the outcomes of psychological therapy for depression and anxiety**
J. Delgadillo, A. Dawson, S. Gilbody and J. R. Böhnke

- 53 **Research of Hope – poems by doctors**
Sally Fox

- 54 **Methylene blue treatment for residual symptoms of bipolar disorder: randomised crossover study**
M. Alda, M. McKinnon, R. Blagdon, J. Garnham, S. MacLellan, C. O'Donovan, T. Hajek, C. Nair, S. Dursun and G. MacQueen

- 61 **Adaptive working memory strategy training in early Alzheimer's disease: randomised controlled trial**
J. D. Huntley, A. Hampshire, D. Bor, A. Owen and R. J. Howard

- 67 **Cortical thickness in obsessive–compulsive disorder: multisite mega-analysis of 780 brain scans from six centres**
J.-P. Fouche, S. du Plessis, C. Hattigh, A. Roos, C. Lochner, C. Soriano-Mas, J. R. Sato, T. Nakamae, S. Nishida, J. S. Kwon, W. H. Jung, D. Mataix-Cols, M. Q. Hoexter, P. Alonso, OCD Brain Imaging Consortium, S. J. de Wit, D. J. Veltman, D. J. Stein and O. A. van den Heuvel

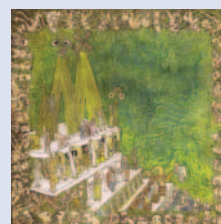
- 75 **Changes in extra-striatal functional connectivity in patients with schizophrenia in a psychotic episode**
H. Peters, V. Riedl, A. Manoliu, M. Scherr, D. Schwerthöffer, C. Zimmer, H. Förstl, J. Bäuml, C. Sorg and K. Koch

Columns

- 83 Correspondence
86 Contents of the *American Journal of Psychiatry*
86 Contents of *BJPsych Advances*
87 Kaleidoscope
89 From the Editor's desk

Cover picture

The Influence Machine or *Illustrations of the Air Loom: Exhibiting a Singular Case of Bomb-Bursting, Lobster-Cracking and Lengthening the Brain, Embellished with Apoplexy Working with the Nutmeg Grater and Stomach Skinning; Featuring the Perpetrations of Billy the King, the Glove Woman, Sir Archy and the Infamous Middleman* (2014). Robert Powell (b. 1965)



This work is part of a series of copper etchings showing the history of civilisation in 16 chapters called *A Universal History of Iniquity*. Its subject is the paranoid delusions of the 19th-century Bedlam inmate John Tilley Mathews, whose sufferings at the hands of the Air Loom Gang were described by his doctor, John Haslam, in *Illustrations of Madness* (1810). The phenomenon of the diabolical machine which controls thoughts and movements was described by the Austrian psychoanalyst Victor Tausk in his 1919 essay *On the Origins of the Influencing Machine*. In this up-to-date version, the setting of the machine is an Apple iStore. Robert Powell is an Edinburgh-based artist. His esoteric and darkly humorous work follows in the traditions of caricature and grotesque from Hieronymus Bosch to James Gillray. He creates complex worlds in which literary and classical references are deployed to satirise contemporary society.

We are always looking for interesting and visually appealing images for the cover of the *Journal* and would welcome suggestions or pictures, which should be sent to Dr Allan Beveridge, British Journal of Psychiatry, 21 Prescot Street, London E1 8BB, UK or bjp@rcpsych.ac.uk.