

ARTICLES

- 211 Effigy Pipes, Diplomacy, and Myth: Exploring Interaction between St. Lawrence Iroquoians and Eastern Iroquois in New York State
Anthony Wonderley
- 241 Bone Chemistry, Body Parts, and Growth Marks: Evaluating Ohio Hopewell and Cahokia Mississippian Seasonality, Subsistence, Ritual, and Feasting
Richard W. Yerkes
- 267 Climate Change and Culture Change on the Southern Coast of British Columbia 2400–1200 cal. B.P.: An Hypothesis
Dana Lepofsky, Ken Lertzman, Douglas Hallett, and Rolf Mathewes
- 295 Ceramic Specialization and Agricultural Marginality: Do Ethnographic Models Explain the Development of Specialized Pottery Production in the Prehistoric American Southwest?
Karen G. Harry
- 321 A Case of Historic Cannibalism in the American West: Implications for Southwestern Archaeology
Alison E. Rautman and Todd W. Fenton

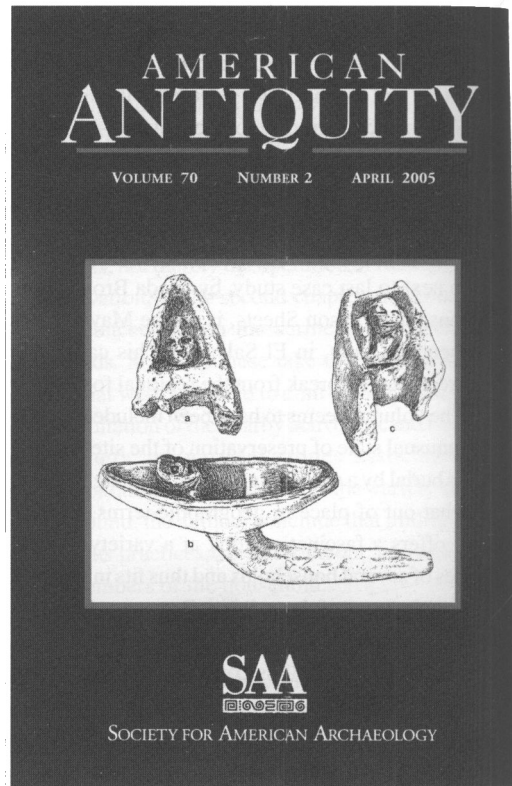
REPORTS

- 342 The Watercraft of Isla Cedros, Baja California: Variability and Capabilities of Indigenous Seafaring Technology Along the Pacific Coast of North America
Matthew R. Des Lauriers
- 361 Morphological Observations on Recently Recovered Early Agricultural Period Maize Cob Fragments from Southern Arizona
Michael W. Diehl

REVIEWS

Book Review Essays

- 376 Modern Approaches to Paleolithic Archaeology in Europe—A Sampler of Research Traditions
G. A. Clark
- Bettencourt-Saint-Ouen (Somme): Cinq occupations paléolithiques au début de la dernière glaciation, edited by Jean-Luc Loch
 - Campements mésolithiques en Bresse jurassienne – Choisey et Ruffey-sur-Seille (Jura), edited by Frédéric Séara, Sylvain Rotillon, and Christophe Cupillard
 - Recent Studies in the Final Palaeolithic of the European Plain, edited by Berit Valentin Eriksen and Bodil Bratlund
 - Rekem—a Federmesser Camp on the Meuse River Bank, Vols. I, II, by Marc De Bie and Jean-Paul Caspar
- 384 Lascaux, Le Geste, L'Espace, et Le Temps, by Norbert Aujoulat; and Chauvet Cave: The Art of Earliest Times, edited by Jean Clottes
Brian Hayden and Suzanne Villeneuve
- 389 The Recovery of Meaning: Historical Archaeology in the Eastern United States, edited by Mark P. Leone and Parker B. Potter, Jr; A Marxist Archaeology, by Randall H. McGuire; Behavioral Archaeology, by Michael Brian Schiffer, and Method and Theory in Historical Archaeology, by Stanley South
Justin Jennings



NOTICE TO AUTHORS

Latin American Antiquity publishes original papers on the archaeology, prehistory, and ethnohistory of Latin America, i.e., Mesoamerica, Central America, and South America, together with culturally affiliated adjacent regions. Papers may also treat more general theoretical and methodological issues with relevance to Latin America. Authors submit manuscripts to the editor for consideration as ARTICLES or REPORTS in English, Spanish, or Portuguese. Authors should submit an original and three copies of their manuscripts (including all figures, tables, references, and notes), along with an abstract in both English and Spanish. Detailed information on policy, style, and technical matters of manuscript preparation is given in English in the "Editorial Policy, Information for Authors, and Style Guide for *American Antiquity* and *Latin American Antiquity*," which appeared in September 1992 (vol. 3, no. 3) and in Spanish in "Código editorial, información para autores y guía estilística para *American Antiquity* and *Latin American Antiquity*," which appeared in July 1997 (vol. 8, no. 2). This information is also available in English through the World Wide Web at <http://www.saa.org/Publications/StyleGuide/styframe.html>. For additional information, updates, or clarification, consult the managing editor at the SAA office in Washington, D.C.

BOARD OF DIRECTORS OF THE SOCIETY FOR AMERICAN ARCHAEOLOGY

Officers

President: KENNETH M. AMES, Portland State University, Department of Anthropology, Portland, OR 97207

Secretary: LINDA CORDELL, CU Museum, Henderson Building CB 218, University of Colorado, Boulder, CO 80309-0001

Treasurer: GEORGE H. ODELL, 600 S College Ave., Department of Anthropology, University of Tulsa, Tulsa, OK 74104-3126

Treasurer-Elect: SUSAN M. CHANDLER, Alpine Archaeological Consultants Inc., P.O. Box 2075, Montrose, CO 81402-2075

Board Members-at-Large

CHRISTOPHER DORE, Statistical Research Inc., P.O. Box 31865, Tucson, AZ 85751

EMILY MCLUNG DE TAPIA, UNAM/CU Circuito Exterior S/n, Coyoacan, Mexico DF 04510

MADONNA MOSS, Department of Anthropology, 1218 University of Oregon, Eugene, OR 97403-1205

SARAH H. SCHLANGER, NM Bureau of Land Management, PO Box 27115, NM 930, Santa Fe, NM 97502-0115

MIRIAM T. STARK, Department of Anthropology, University of Hawaii, 2424 Maile Way, Saunders 346, Honolulu, HI 96822-2223

JOE WATKINS, Department of Anthropology MSC01 1040, University of New Mexico, Albuquerque, NM 87131

Ex-Officio Board Member

TOBI A. BRIMSEK, Executive Director, Society for American Archaeology, 900 Second St, N.E., Suite 12, Washington, D.C., 20002-3557

ARTICLES

- 115 Wild or Domesticated? Camelids in Early Formative Rock Art of the Atacama Desert (Northern Chile)
Francisco Gallardo and Hugo Jacobaccio
- 131 Planting the Bones: Hunting Ceremonialism at Contemporary and Nineteenth-Century Shrines in the Guatemalan Highlands
Linda A. Brown
- 147 Khipu Archives: Duplicate Accounts and Identity Labels in the Inka Knotted String Records
Gary Urton

REPORTS

- 169 The Viejo Period of Chihuahua Culture in Northwestern Mexico
Joe D. Stewart, Jane H. Kelley, A. C. MacWilliams, and Paula J. Reimer
- 193 Detecting “Invisible” Dwellings in the Maya Area Using Electromagnetic Induction: Significant Findings of a Pilot Study at Chau Hiix, Belize
Tracy L. Sweely

COMMENTS

- 209 More on Mesoamerican Cosmology and City Plans
Ivan Šprajc
- 217 Did the Maya Build Architectural Cosmograms?
Michael E. Smith

REVIEWS

- 225 The Fall of the Ancient Maya: Solving the Mystery of the Maya Collapse, by David Webster
Traci Ardren
- 226 Gold and Power in Ancient Costa Rica, Panama, and Colombia, edited by Jeffrey Quilter and John W. Hoopes
Frederick W. Lange
- 229 Domestic Ritual in Ancient Mesoamerica, edited by Patricia Plunket
Julia A. Hendon

On the Cover: Painted hunters with spear throwers, darts, and camelids (red and yellow). Site 2Loa15/13 (detail). Confluencia Style. Maximum length, 54 cm. (Drawing by Bernardita Brancoli.) From “Wild or Domesticated? Camelids in Early Formative Rock Art of the Atacama Desert (Northern Chile)” by Francisco Gallardo and Hugo Jacobaccio, page 120.

© The paper used in this publication meets the requirements of ANSI/NISO Z39.48-1992
(Permanence of Paper).